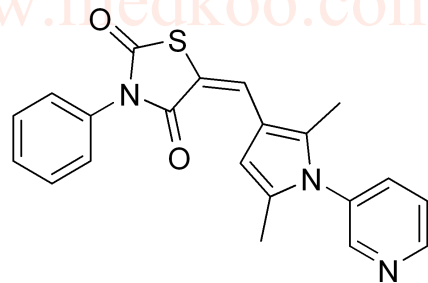
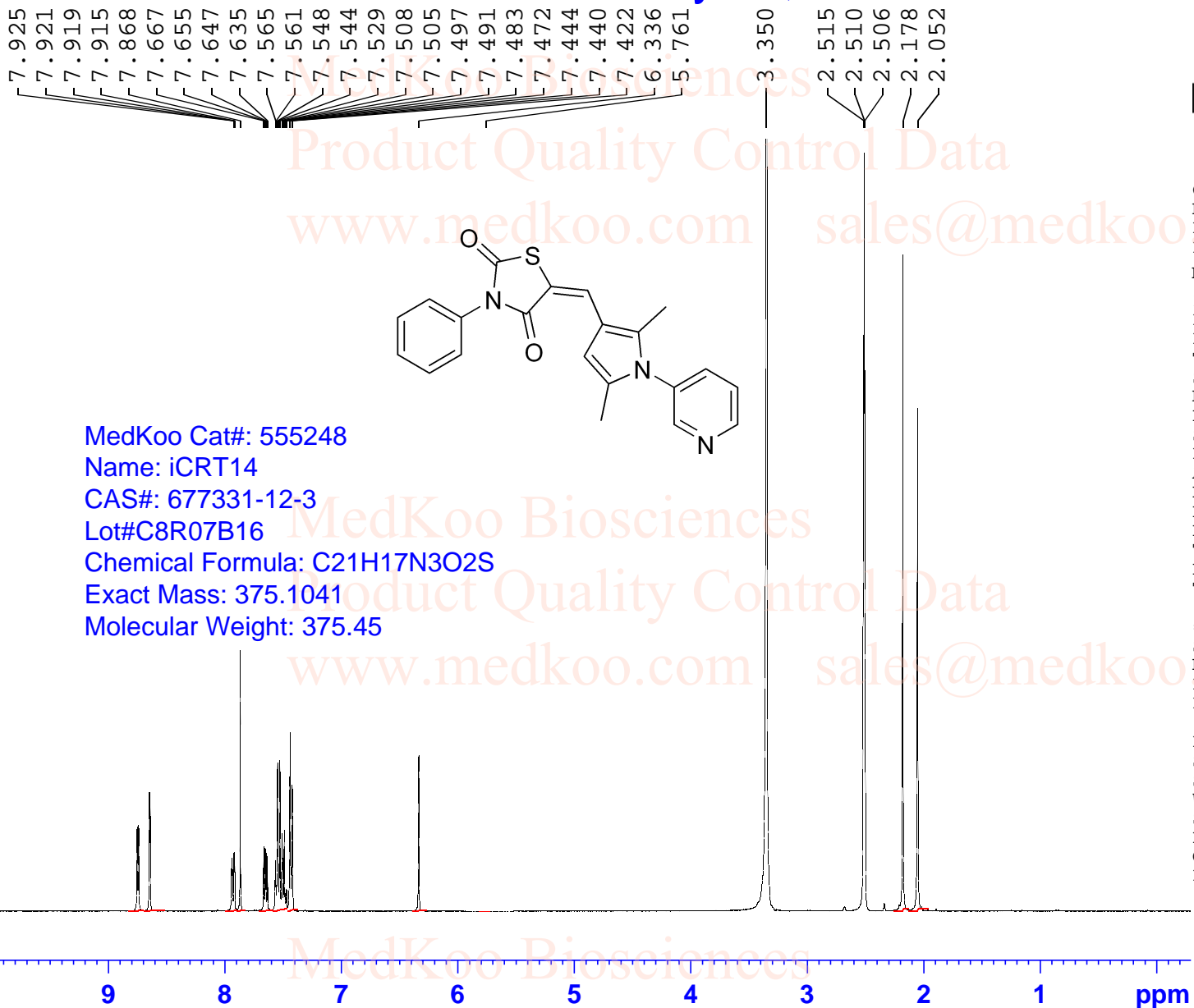


iCRT14 HNMR Analysis, Solvent = DMSO



MedKoo Cat#: 555248

Name: iCRT14

CAS#: 677331-12-3

Lot#C8R07B16

Chemical Formula: C₂₁H₁₇N₃O₂S

Exact Mass: 375.1041

Molecular Weight: 375.45



Current Data Parameters
 NAME 677331-12-3
 EXPNO 1
 PROCNO 1

F2 - Acquisition Parameters

INSTRUM spect
 PROBHD 5 mm PADUL 13C
 PULPROG zg30
 TD 65536
 SOLVENT DMSO
 NS 16
 DS 2
 SWH 8012.820 Hz
 FIDRES 0.122266 Hz
 AQ 4.0894465 sec
 RG 158.27
 DW 62.400 usec
 DE 6.50 usec
 TE 298.5 K
 D1 1.00000000 sec
 TD0 1

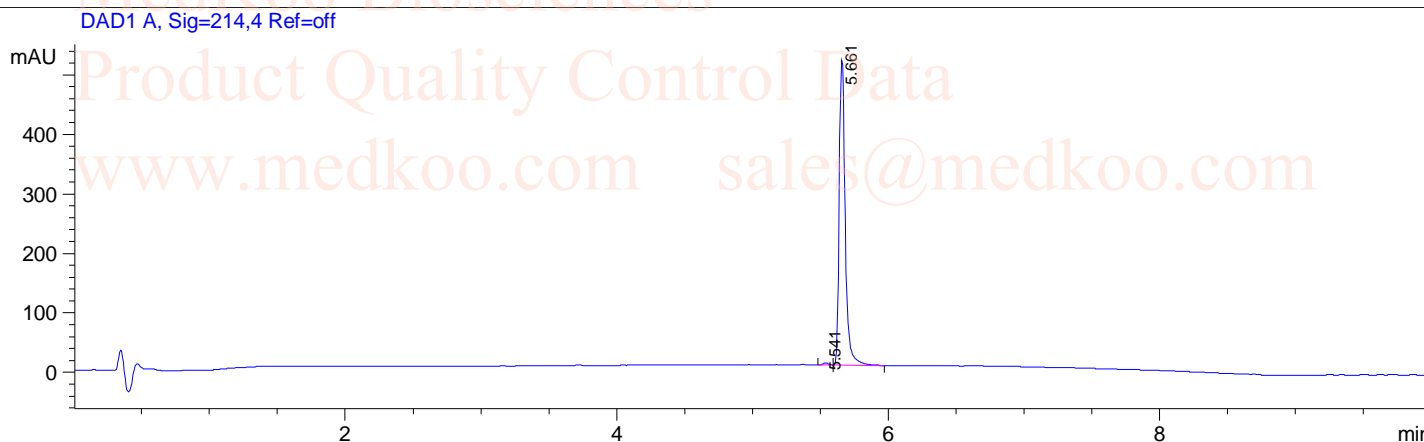
==== CHANNEL f1 =====
 SFO1 400.1324710 MHz
 NUC1 1H
 P1 10.00 usec
 PLW1 20.00000000 W

F2 - Processing parameters
 SI 65536
 SF 400.1300000 MHz
 WDW EM
 SSB 0
 LB 0.30 Hz
 GB 0
 PC 1.00

iCRT14 HPLC Analysis

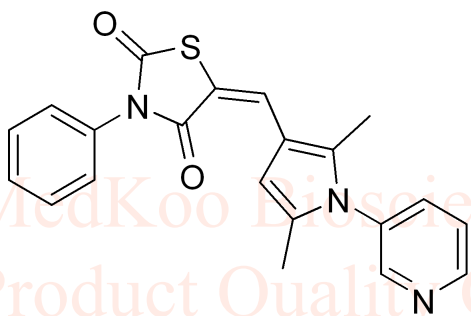
Sample Name : 677331-12-3
Acq. Operator : 1
Spec. Reported : Integration

Location : P1-E-05
Inj : 0
Inj Volume : 4 ul



Integration Results for DAD1 A, Sig=214,4 Ref=off

RetTim	Width	Area	Height	Area%
5.54	0.05	10.43	3.43	0.65
5.66	0.05	1605.85	515.58	99.35



MedKoo Cat#: 555248
Name: iCRT14
CAS#: 677331-12-3
Lot#C8R07B16
Chemical Formula: C₂₁H₁₇N₃O₂S
Exact Mass: 375.1041
Molecular Weight: 375.45

Product Quality Control Data
www.medkoo.com sales@medkoo.com

iCRT14 MS Analysis

Sample Name : 677331-12-3
Acq. Operator : 3
Spec. Reported : MS Integration

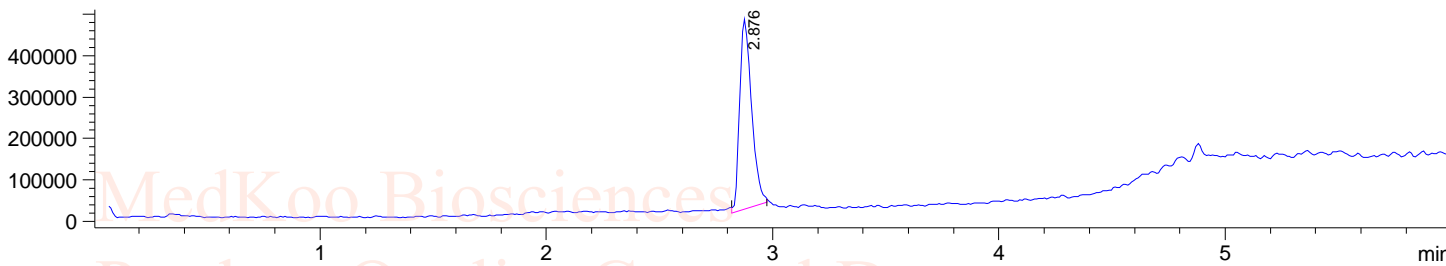
Tgt Mass(EZX) :
Location : 12
Inj : 1
Inj Volume : 3 ul

MedKoo Biosciences

Product Quality Control Data

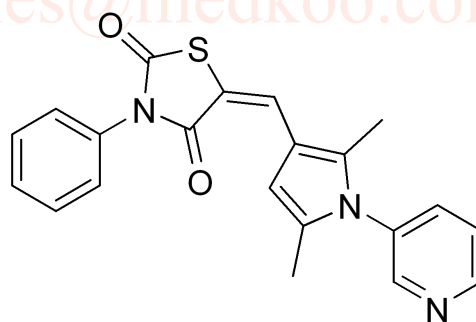
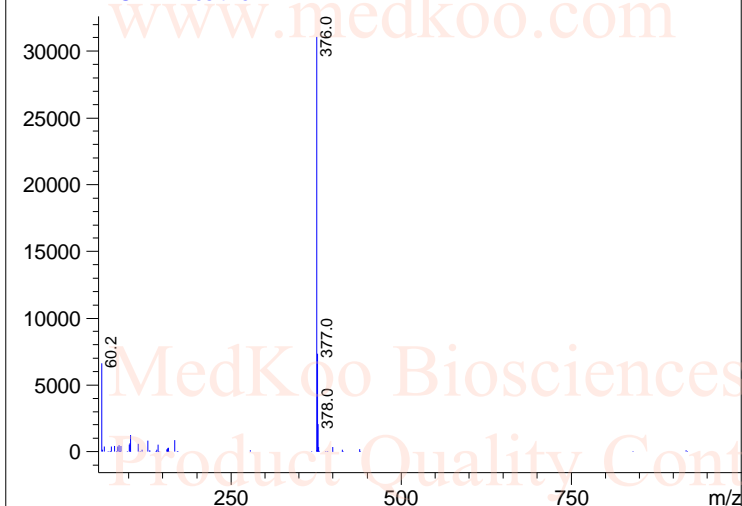
www.medkoo.com sales@medkoo.com

MSD1 TIC, MS File ES-API, Pos, Scan, Frag: 100



Ret. Time: 2.88 <<<< POSITIVE SPECTRA >>>>

ES-API Positive



MedKoo Cat#: 555248

Name: iCRT14

CAS#: 677331-12-3

Lot#C8R07B16

Chemical Formula: C₂₁H₁₇N₃O₂S

Exact Mass: 375.1041

Molecular Weight: 375.45

www.medkoo.com sales@medkoo.com

MedKoo Biosciences

Product Quality Control Data

www.medkoo.com

sales@medkoo.com

www.medkoo.com

MedKoo Biosciences