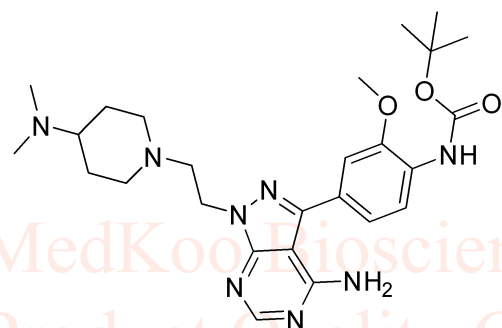


eCF506 HNMR Analysis, solvent: CD3OD

www.medkoo.com sales@medkoo.com



MedKoo Cat#: 407331
Name: eCF506
CAS#: 1914078-41-3
Lot#: S8S04C23
Chemical Formula: C₂₆H₃₈N₈O₃
Exact Mass: 510.3067
Molecular Weight: 510.64

www.medkoo.com sales@medkoo.com

8.241 8.067 8.047
7.271 7.235 7.218 7.214
4.890 4.541 4.525 4.508
3.952 3.313 3.309 3.112 3.084 2.913 2.897 2.881
2.258 2.207 2.178 2.149 2.121 2.090 2.064 2.038 1.850 1.824
1.541 1.485 1.474 1.447 1.423 1.282

0.99 1.00

2.12

2.02

3.15

2.00 1.94

6.01

1.33

2.17

2.18

9.37

2.36

9 8 7 6 5 4 3 2 1 PPM

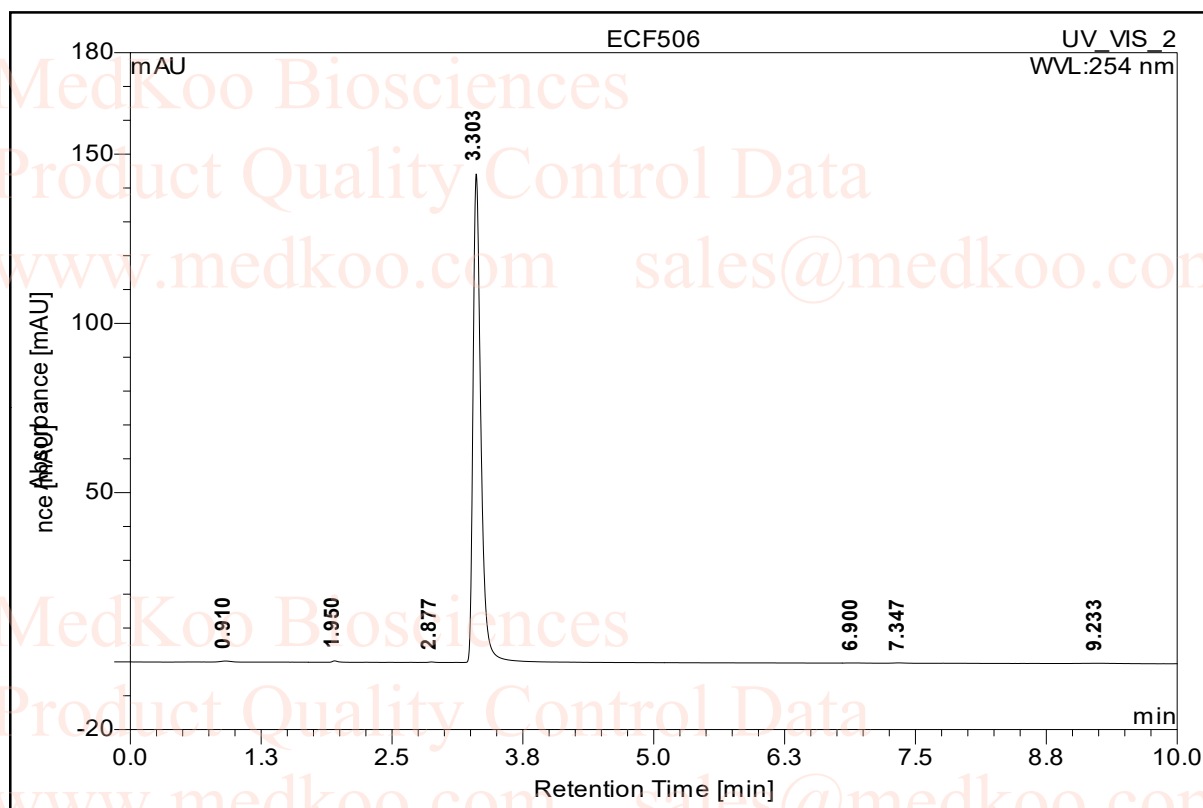
eCF506,CD3OD,400MHz

F1: 399.790	F2: 100.536	SW1: 6410	OF1: 2631.1	PTS1d: 16384
EX: s2pul	PW: 5.6 usec	PD: 1.0 sec	NA: 16	LB: 0.0

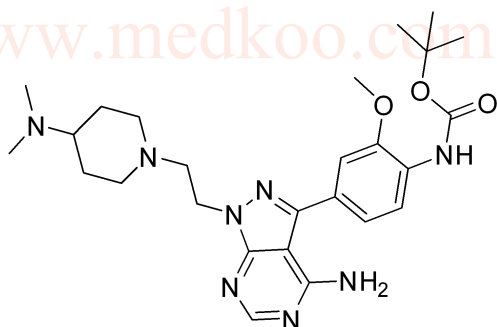
www.medkoo.com sales@medkoo.com

eCF506 HPLC Analysis

Sample Name:	ECF506	Injection Volume:	5.0
Vial Number:	RE7	Channel:	UV_VIS_2
Sample Type:	unknown	Wavelength:	254
Control Program:		Bandwidth:	4
Quantif. Method:	default	Dilution Factor:	1.0000
Run Time (min):	10.69	Sample Weight:	1.0000
		Sample Amount:	1.0000



No.	Ret.Time min	Peak Name	Height mAU	Area mAU*min	Rel.Area %	Amount n.a.	Type
1	0.91	n.a.	0.300	0.035	0.28	n.a.	BMB
2	1.95	n.a.	0.405	0.026	0.21	n.a.	BMB
3	2.88	n.a.	0.134	0.008	0.06	n.a.	BMB*
4	3.30	n.a.	144.323	12.564	99.00	n.a.	BMB*
5	6.90	n.a.	0.049	0.011	0.09	n.a.	BMB*
6	7.35	n.a.	0.097	0.013	0.10	n.a.	BMB*
7	9.23	n.a.	0.080	0.026	0.20	n.a.	BMB
8	10.17	n.a.	0.039	0.008	0.06	n.a.	BMB*
9	10.47	n.a.	0.004	0.000	0.00	n.a.	BMB
10	10.67	n.a.	0.004	0.000	0.00	n.a.	BMB
Total:			145.435	12.691	100.00	0.000	



MedKoo Cat#: 407331

Name: eCF506

CAS#: 1914078-41-3

Lot#: S8S04C23

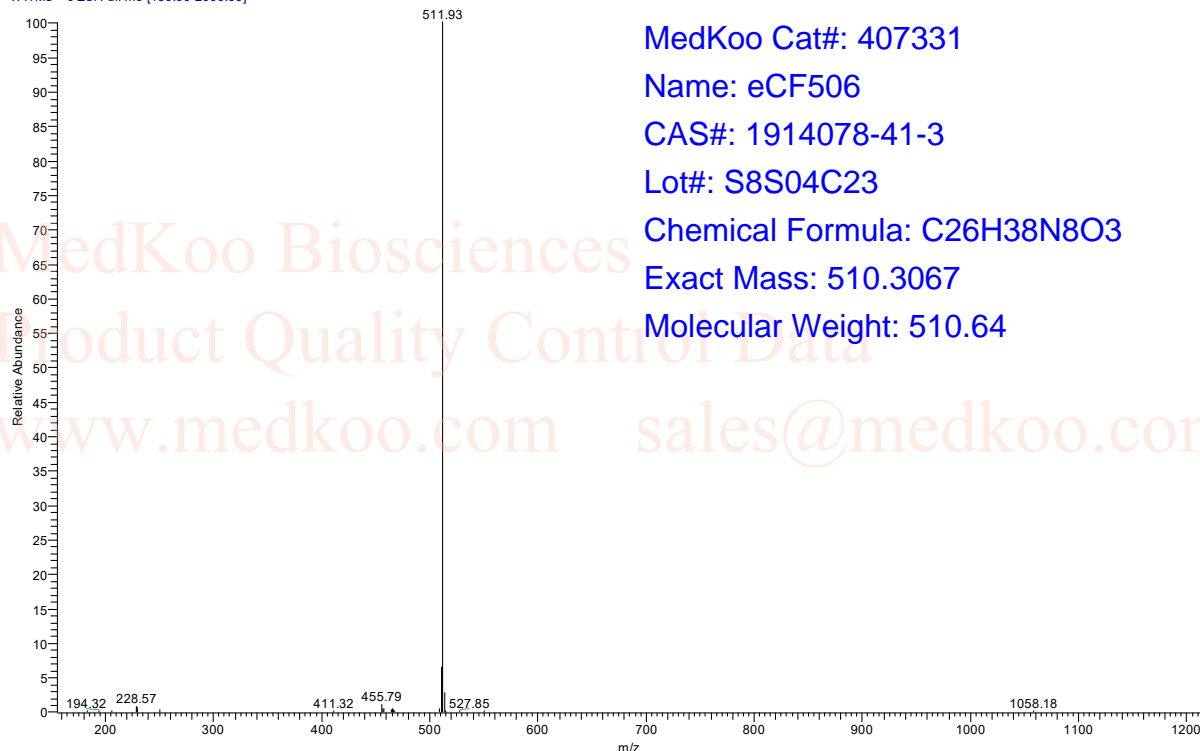
Chemical Formula: C₂₆H₃₈N₈O₃

Exact Mass: 510.3067

Molecular Weight: 510.64

eCF506 MS Analysis

ecf-506_180421172850 #106 RT: 0.99 AV: 1 NL: 1.11E5
T: ITMS + c ESI Full ms [150.00-2000.00]



MedKoo Cat#: 407331

Name: eCF506

CAS#: 1914078-41-3

Lot#: S8S04C23

Chemical Formula: C₂₆H₃₈N₈O₃

Exact Mass: 510.3067

Molecular Weight: 510.64

ecf-506_180421172850 #108 RT: 1.01 AV: 1 NL: 1.14E5
T: ITMS + c ESI Full ms [150.00-2000.00]

