

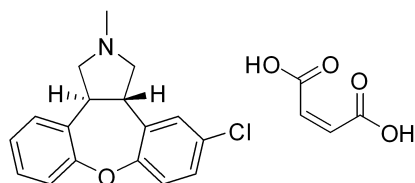
7.396  
7.390  
7.374  
7.368  
7.356  
7.349  
7.342  
7.330  
7.321  
7.315  
7.309  
7.300  
7.280  
7.229  
7.217  
7.203  
7.199  
6.043

4.035  
4.022  
4.012  
3.995  
3.899  
3.869  
3.852  
3.755  
3.729  
3.702  
3.677  
3.022  
2.510  
2.505  
2.501

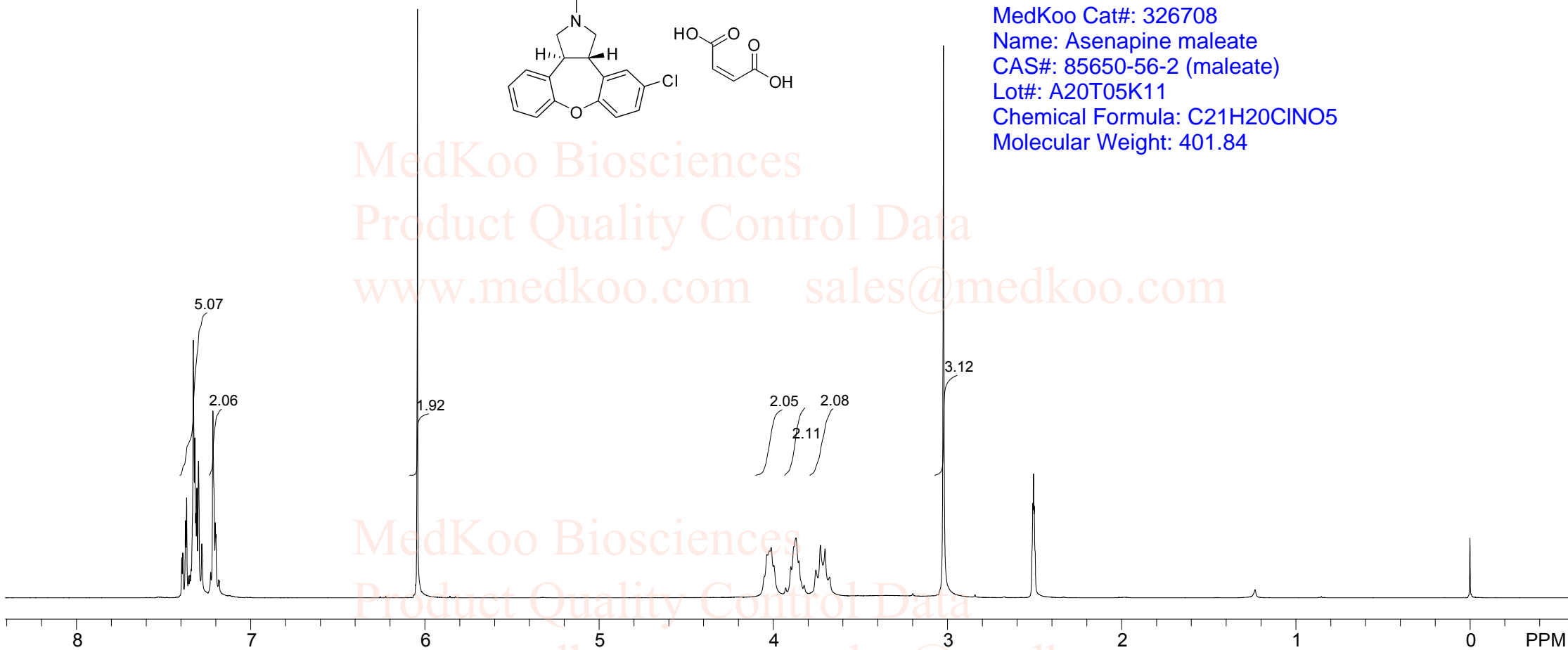
-0.001

# Asenapine maleate HNMR Analysis in DMSO

www.medkoo.com sales@medkoo.com



MedKoo Cat#: 326708  
Name: Asenapine maleate  
CAS#: 85650-56-2 (maleate)  
Lot#: A20T05K11  
Chemical Formula: C<sub>21</sub>H<sub>20</sub>ClNO<sub>5</sub>  
Molecular Weight: 401.84



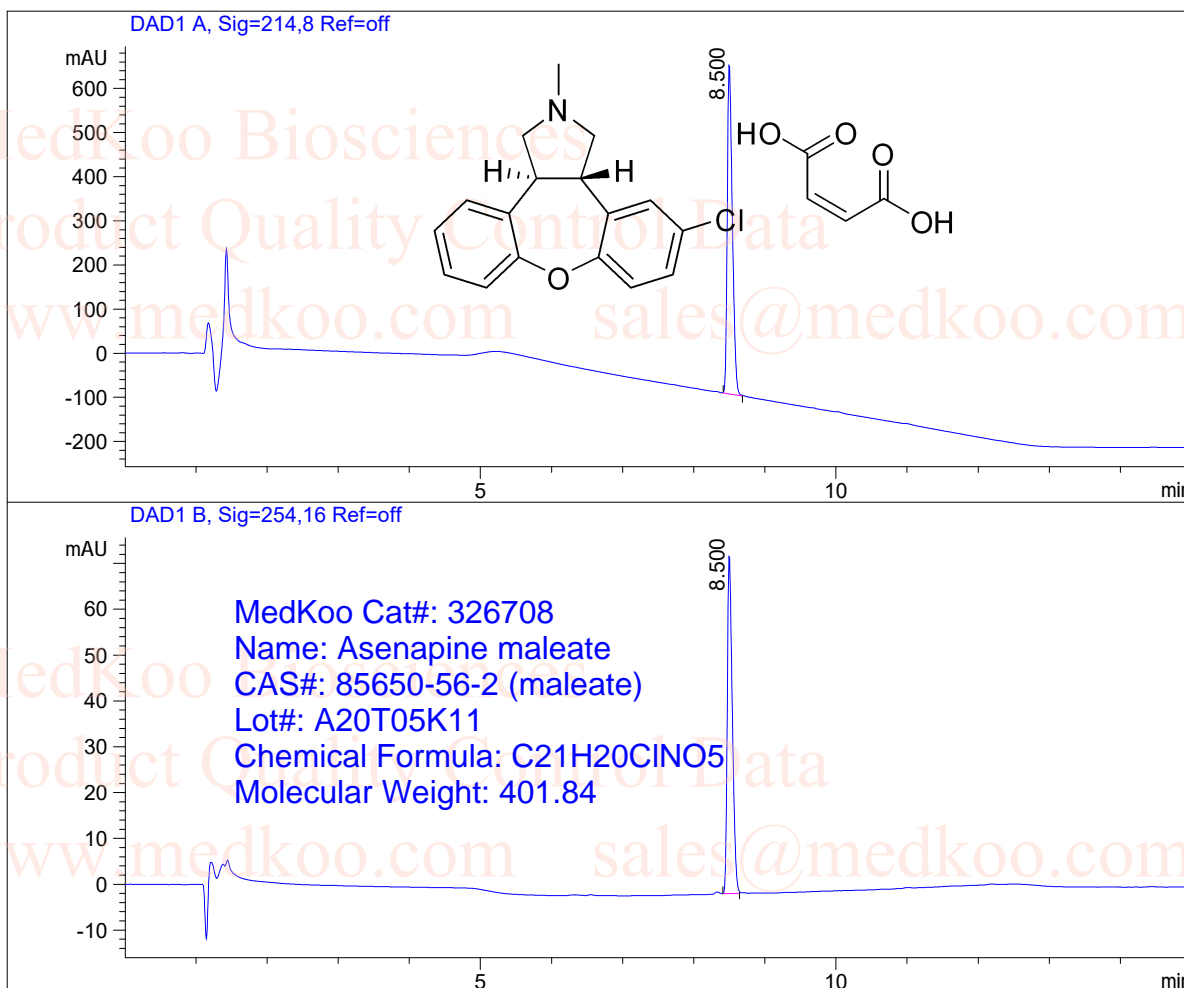
MedKoo Biosciences

www.medkoo.com

sales@medkoo.com

# Asenapine maleate HPLC Analysis

Sample Name : 85650-56-2  
 Data File : D:\DATA-LCMS-13\85650-56-2.D Inj. Vol. : 3ul  
 Acq Operator : LCMS-13 Location : Vial 53  
 Acq. Method : D:\data-lcms-13\C2-P-10-95-TFA-15MI  
 Method Info. : column:Xbridge C18 5um 4.6\*30mm ;mobile phase:B(ACN),  
 A(0.02%NH4Ac); gradient(B%):as Acq.Method above



=====  
 Integration Results  
 =====

Signal 1: DAD1 A, Sig=214,8 Ref=off

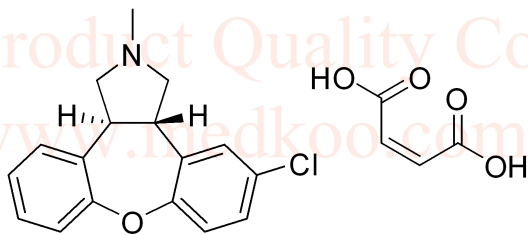
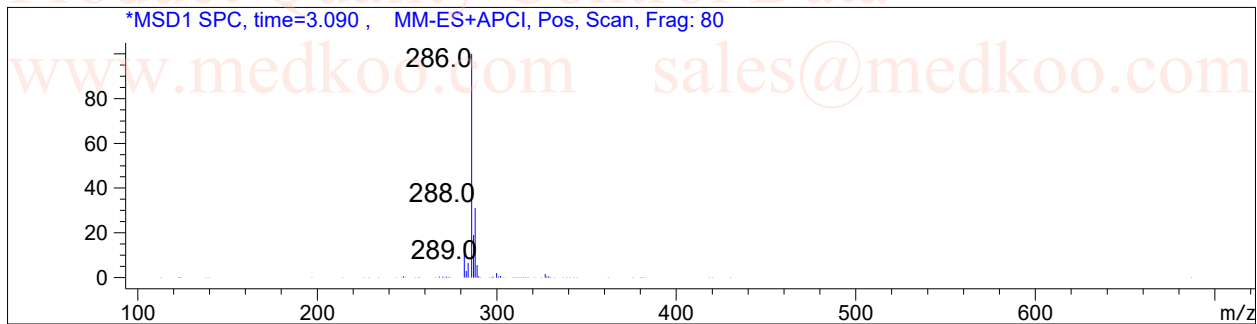
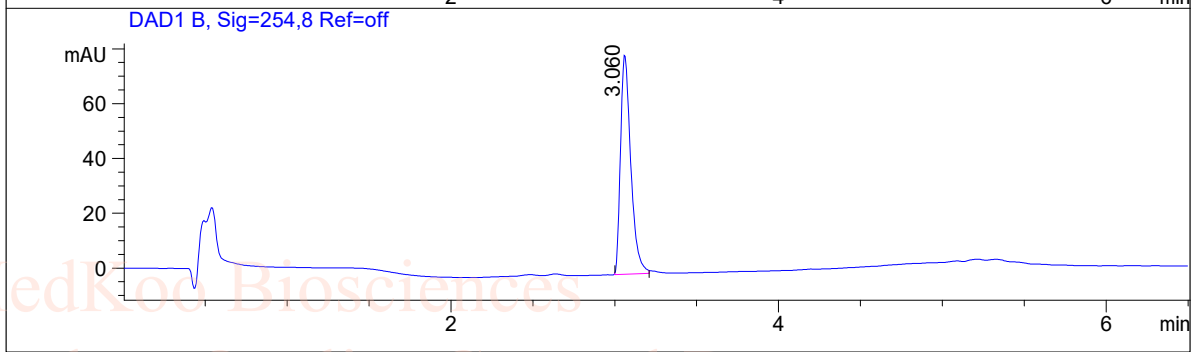
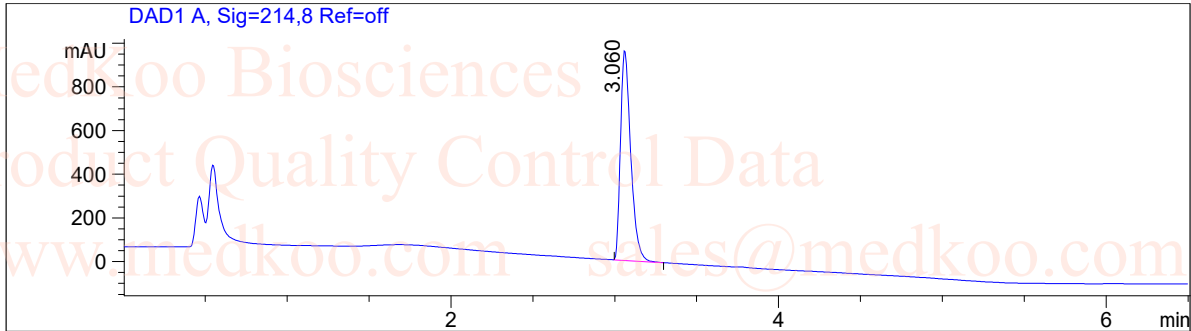
#	R.T.	Type	Height	Height%	Width	Area	Area %
1	8.500	BB	747.507	100.000	0.076	3721.424	100.000

Signal 2: DAD1 B, Sig=254,16 Ref=off

#	R.T.	Type	Height	Height%	Width	Area	Area %
1	8.500	BB	73.853	100.000	0.076	365.141	100.000

# Asenapine maleate LC/MS Analysis

Sample Name : 85650-56-2  
Data File : D:\DATA-LCMS-13\85650-56-2.D Inj. Vol. : 5ul  
Acq Operator : LCMS-13 Location : Vial 11  
Acq. Method : D:\data-lcms-13\P-05-95-TFA.M  
Method Info. : column:Xbridge C18 5um 4.6\*50mm ;mobile phase:B(ACN),  
A(0.05%TFA); gradient(B%):as Acq.Method above



MedKoo Cat#: 326708  
Name: Asenapine maleate  
CAS#: 85650-56-2 (maleate)  
Lot#: A20T05K11  
Chemical Formula: C<sub>21</sub>H<sub>20</sub>ClNO<sub>5</sub>  
Molecular Weight: 401.84  
Name: Asenapine free base  
Chemical Formula: C<sub>17</sub>H<sub>16</sub>ClNO  
Exact Mass: 285.09  
Molecular Weight: 285.77