

Current Data Parameters
NAME Y-27632
EXPNO 10
PROCNO 1

F2 - Acquisition Parameters

INSTRUM spect
PROBHD 5 mm PABBO BB-
PULPROG zg30
TD 65536
SOLVENT MeOD
NS 16
DS 2
SWH 8012.820 Hz
FIDRES 0.122266 Hz
AQ 4.0894465 sec
RG 128
DW 62.400 usec
DE 6.50 usec
TE 295.2 K
D1 1.00000000 sec
TD0 1

==== CHANNEL f1 =====
SFO1 400.1324710 MHz
NUC1 1H
P1 13.00 usec
PLW1 19.00000000 W

F2 - Processing parameters
SI 65536
SF 400.1300000 MHz
WDW no
SSB 0
LB 0 Hz
GB 0
PC 1.00

8.636
8.617
8.252
8.233
4.901
3.337
3.333
3.329
3.325
3.321
3.204
3.188
3.172
2.603
2.581
2.572
2.564
2.542
2.134
2.117
2.100
1.955
1.950
1.942
1.932
1.923
1.919
1.662
1.653
1.641
1.620

Y27632 HCl HNMR Analysis, solvent: MeOD

MedKoo Cat#: 510272

Name: Y27632 HCl

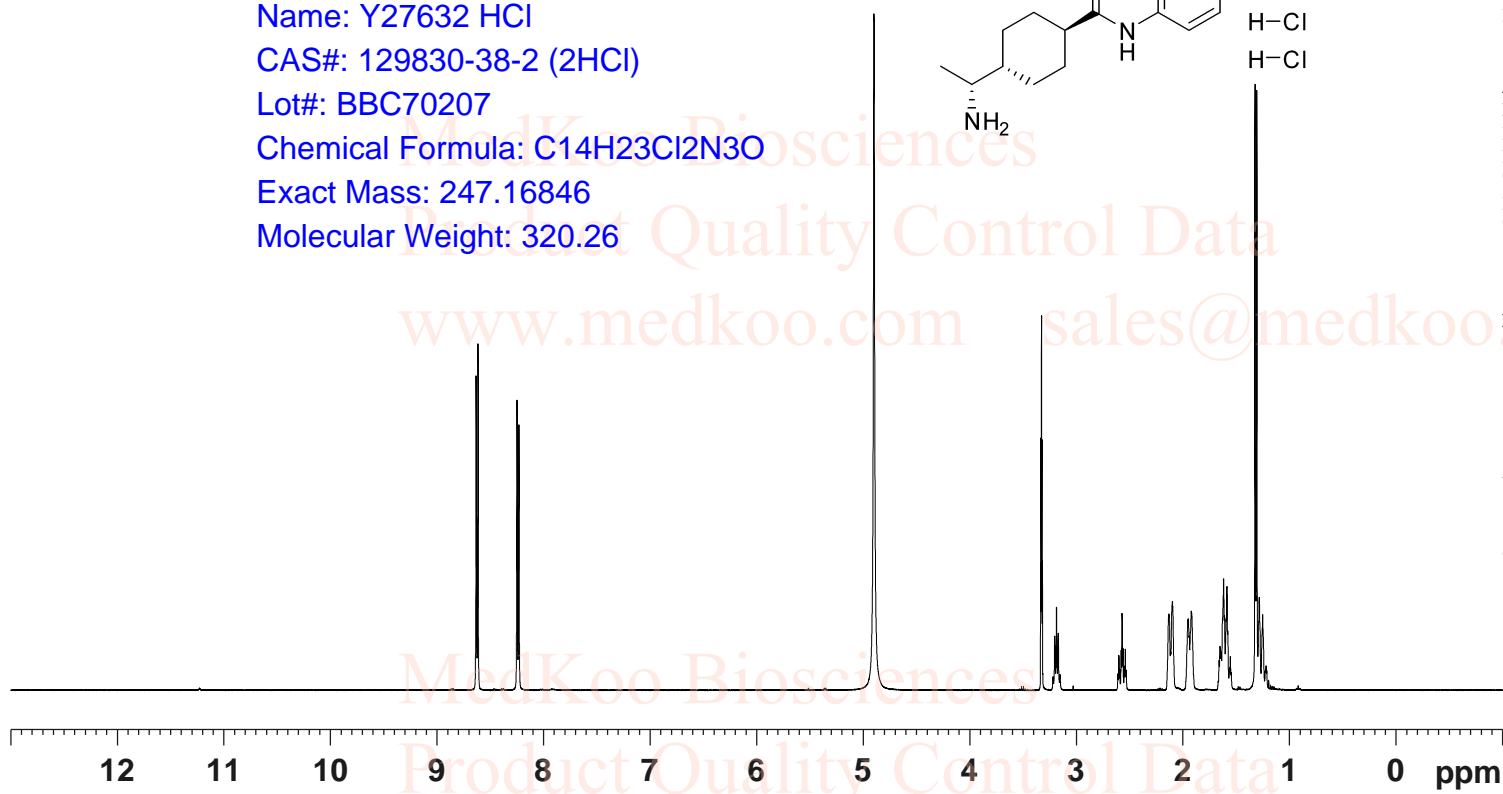
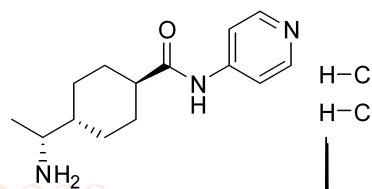
CAS#: 129830-38-2 (2HCl)

Lot#: BBC70207

Chemical Formula: C₁₄H₂₃Cl₂N₃O

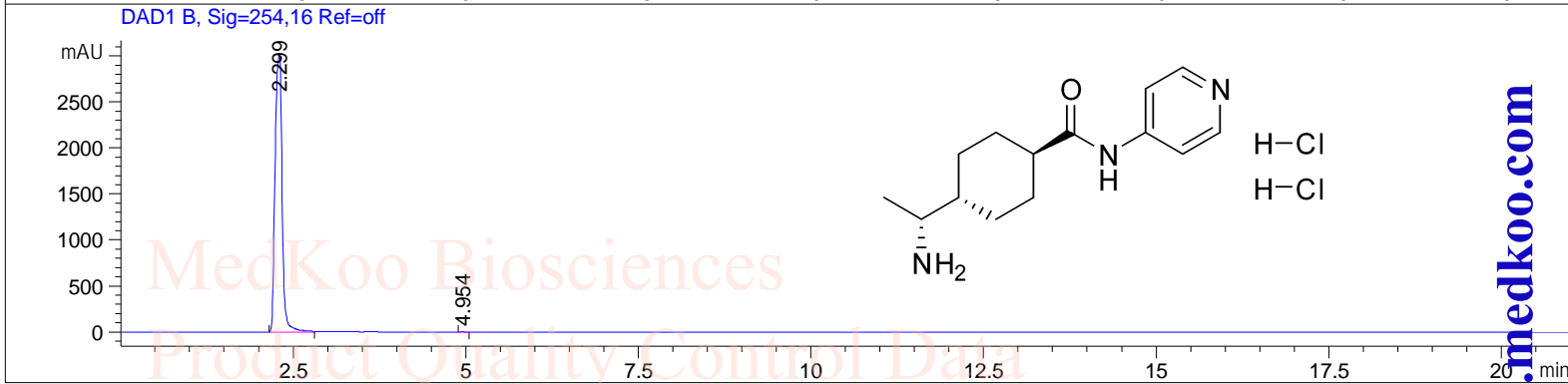
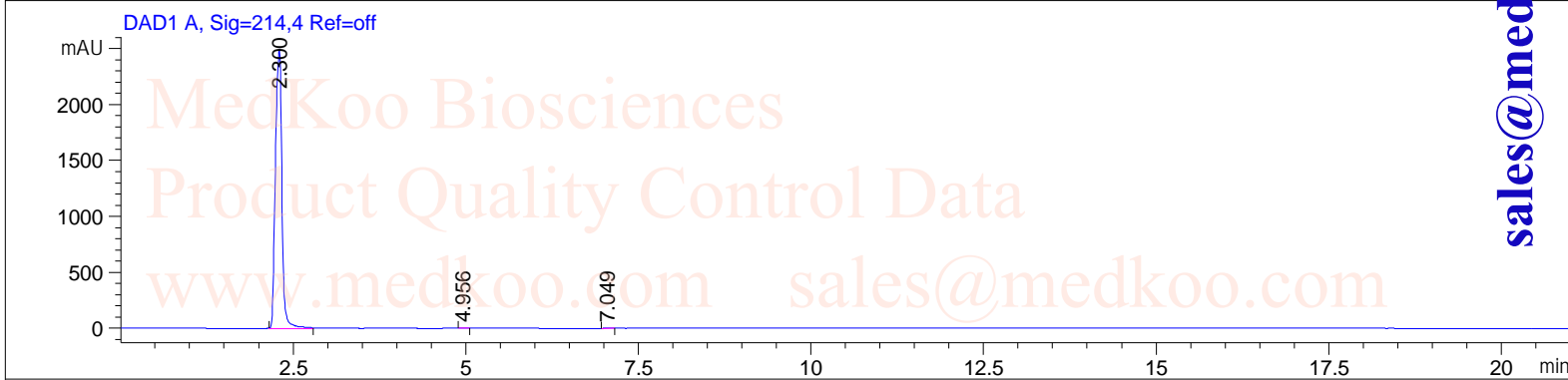
Exact Mass: 247.16846

Molecular Weight: 320.26



Y27632 HCl HPLC Analysis

User : Sequence : 1
 Instrument : Instrument 1 Local : Vial 9
 Method : C:\CHEM32\1\DATA\TEST-KR.M Injection : 1
 Injection volume : 1.0 µl



Area Percentage Report

Signal 1: DAD1 A, Sig=214,4 Ref=off

Peak #	Ret. Time [min]	Type	Width [min]	Area [mAU*s]	Height [mAU]	Area %
1	2.300	BBA	0.1062	1.62317e4	2484.66284	99.8649
2	4.956	BB	0.0567	8.07923	2.20907	0.0497
3	7.049	BB	0.0659	13.87912	3.24241	0.0854

Total: 1.62537e4 2490.11432

Signal 2: DAD1 B, Sig=254,16 Ref=off

Peak #	Ret. Time [min]	Type	Width [min]	Area [mAU*s]	Height [mAU]	Area %
1	2.299	BBA	0.1140	2.12501e4	3024.20142	99.9732
2	4.954	BB	0.0523	5.69413	1.73566	0.0268

Total: 2.12558e4 3025.93708

MedKoo Cat#: 510272

Name: Y27632 HCl

CAS#: 129830-38-2 (2HCl)

Lot#: BBC70207

Chemical Formula: C₁₄H₂₃Cl₂N₃O

Exact Mass: 247.16846

Molecular Weight: 320.26

sales@medkoo.com

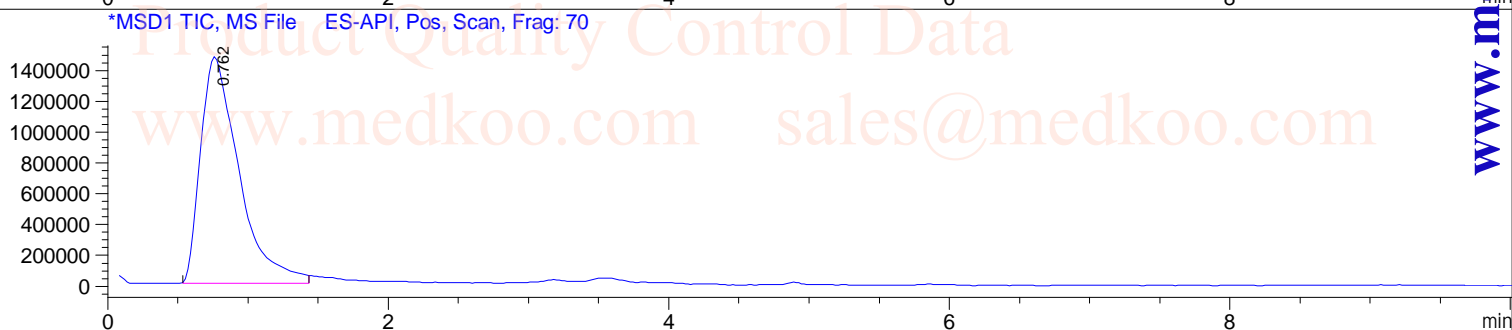
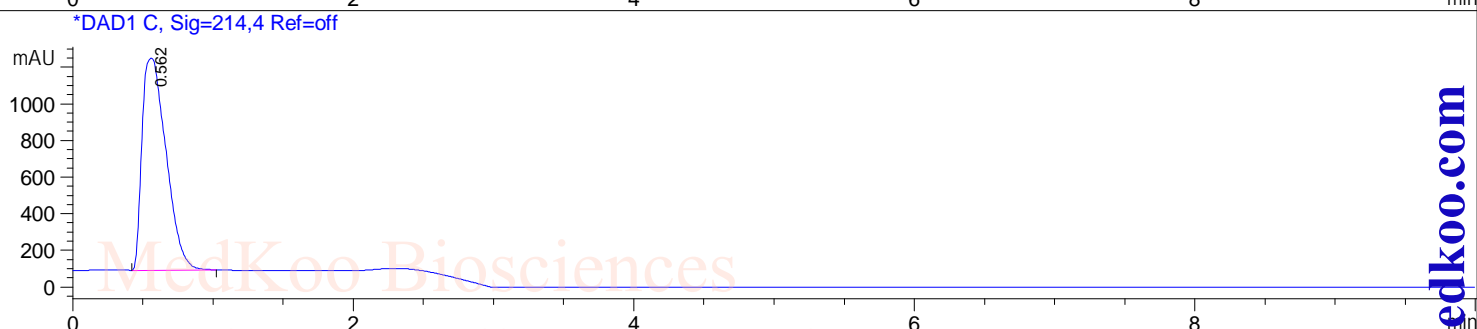
www.medkoo.com

MedKoo Biosciences

Y27632 HCl LC/MS Analysis

Sample Name : Y-27632
Acq. Operator : [BSB2]
Spec. Reported : MS Integration
Acq. Method : C:\Chem32\1\DATA\TEST KR POS_LC.M
Analysis Method : C:\Chem32\1\METHODS\TEST KR POS_LC.M

Tgt Mass(EZX) :
Location : Vial 41
Inj : 1
Inj Volume : 1 ul



Ret. Time: 0.76 <<<< POSITIVE SPECTRA >>>>

