

Varespladib HNMR Analysis, solvent: DMSO



Current Data Parameters
 NAME LY315920
 EXPNO 10
 PROCNO 1

F2 - Acquisition Parameters

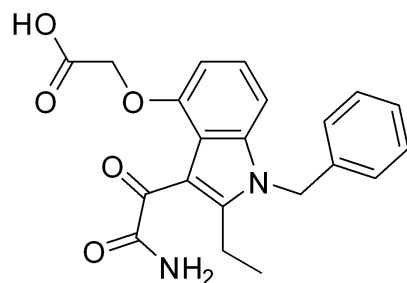
INSTRUM spect
 PROBHD 5 mm PABBO BB-
 PULPROG zg30
 TD 65536
 SOLVENT DMSO
 NS 16
 DS 2
 SWH 8012.820 Hz
 FIDRES 0.122266 Hz
 AQ 4.0894465 sec
 RG 144
 DW 62.400 usec
 DE 6.50 usec
 TE 295.3 K
 D1 1.00000000 sec
 TD0 1

==== CHANNEL f1 =====
 SFO1 400.1324710 MHz
 NUC1 1H
 P1 13.00 usec
 PLW1 19.00000000 W

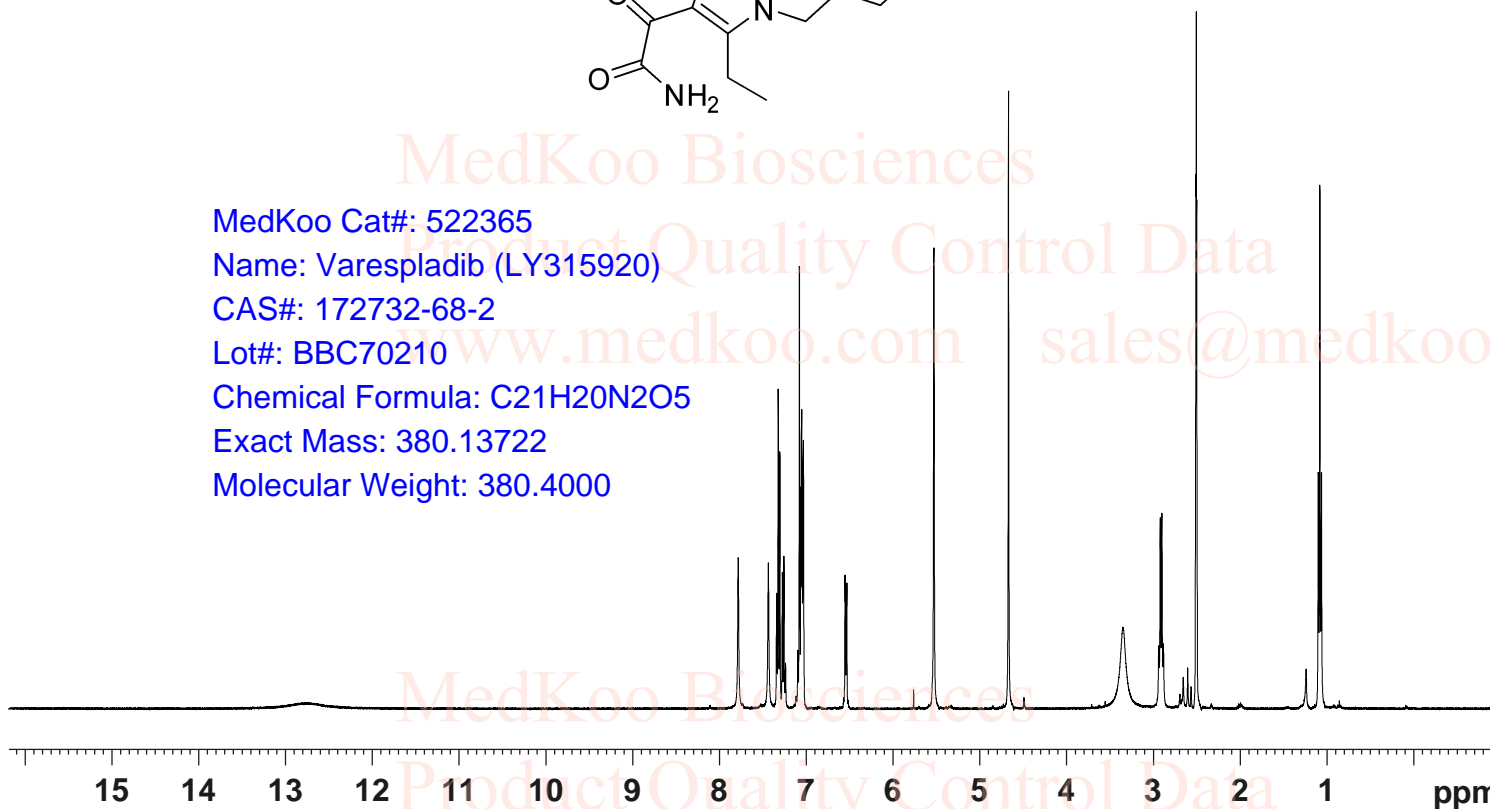
F2 - Processing parameters
 SI 65536
 SF 400.1300000 MHz
 WDW no
 SSB 0
 LB 0 Hz
 GB 0
 PC 1.00

— 12.750

7.787
 7.439
 7.343
 7.325
 7.307
 7.277
 7.259
 7.082
 7.064
 7.053
 7.044
 7.035
 6.556
 6.551
 6.539
 6.535
 5.532
 4.671
 3.354
 2.941
 2.923
 2.904
 2.886
 2.512
 2.508
 2.503
 1.102
 1.084
 1.065



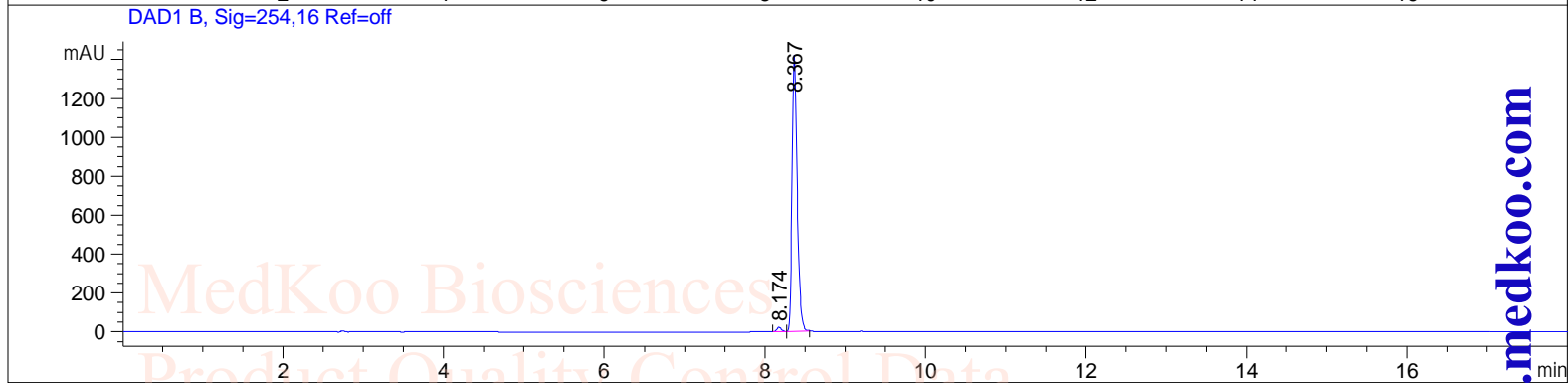
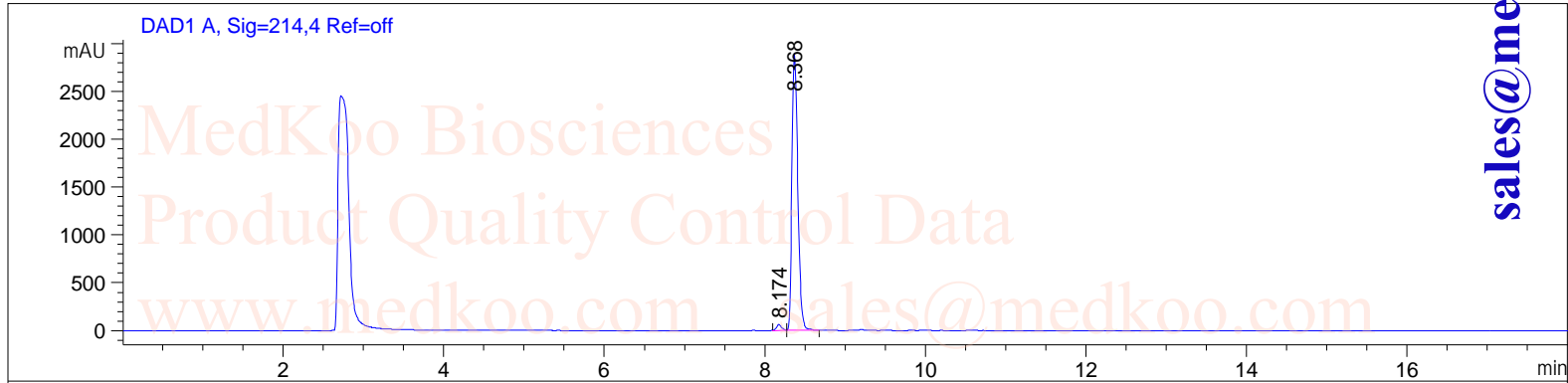
MedKoo Cat#: 522365
 Name: Varespladib (LY315920)
 CAS#: 172732-68-2
 Lot#: BBC70210
 Chemical Formula: C₂₁H₂₀N₂O₅
 Exact Mass: 380.13722
 Molecular Weight: 380.4000



Varespladib HPLC Analysis

```

=====
User           : System                               Seq. Line : 4
Instrument     : Instrument 1                       Location  : Vial 49
Analysis Method : C:\CHEM32\1\METHODS\TEST-KR.M    Injection  : 1
Acq. Method   : C:\CHEM32\1\DATA\TEST-KR.M         Inj. Volume : 1.0 µl
    
```



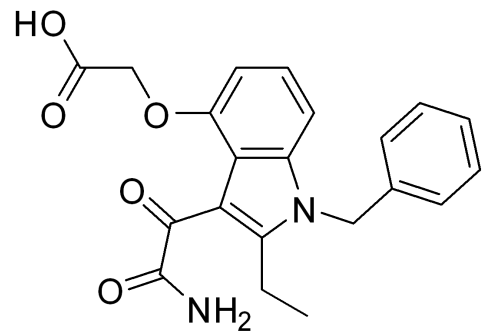
Area Percent Report

```

=====
Sorted By           : Signal
Multiplier          : 1.0000
Dilution            : 1.0000
User Multiplier & Dilution Factor with ISTDs
    
```

Signal 1: DAD1 A, Sig=214,4 Ref=off

Peak #	Ret. Time [min]	Type	Width [min]	Area [mAU*s]	Height [mAU]	Area %
1	8.174	BV	0.0670	277.18063	63.45173	1.8246
2	8.368	VB	0.0820	1.49140e4	2902.33838	98.1754
Total:				1.51912e4	2965.79011	



Signal 2: DAD1 B, Sig=254,16 Ref=off

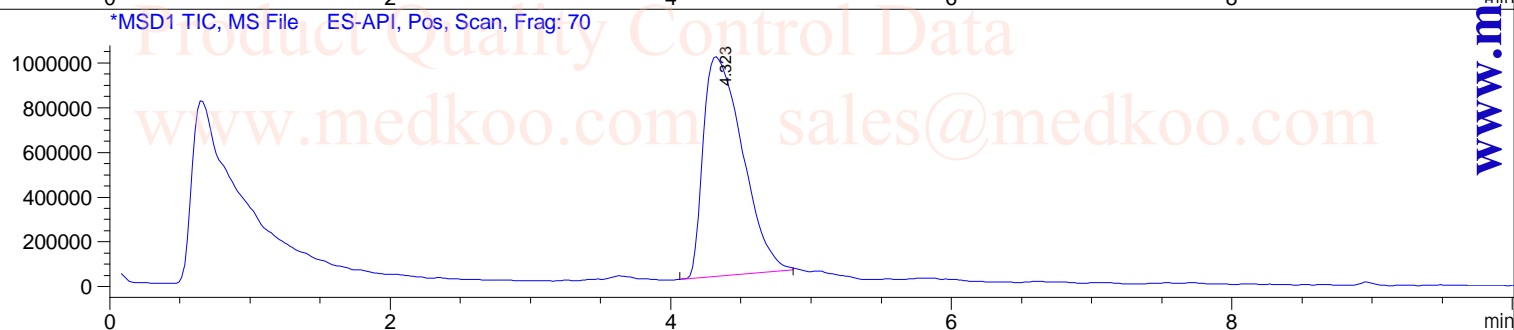
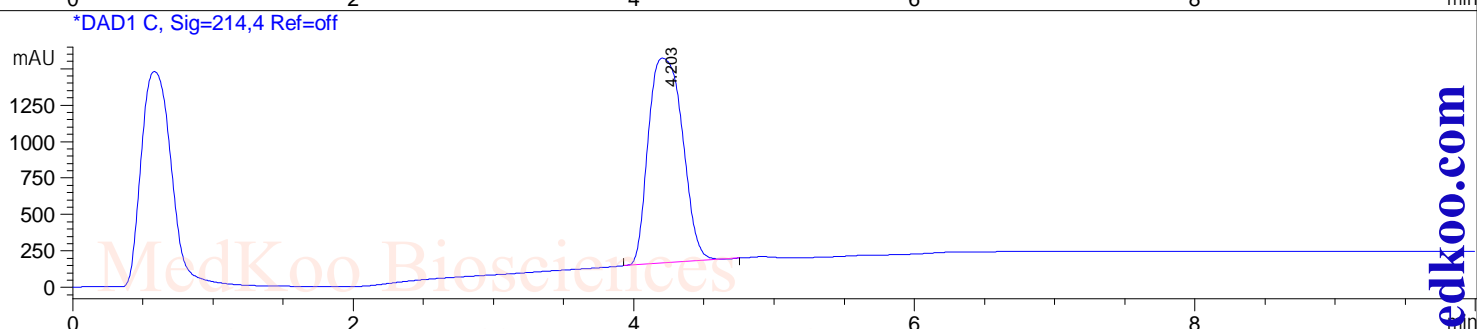
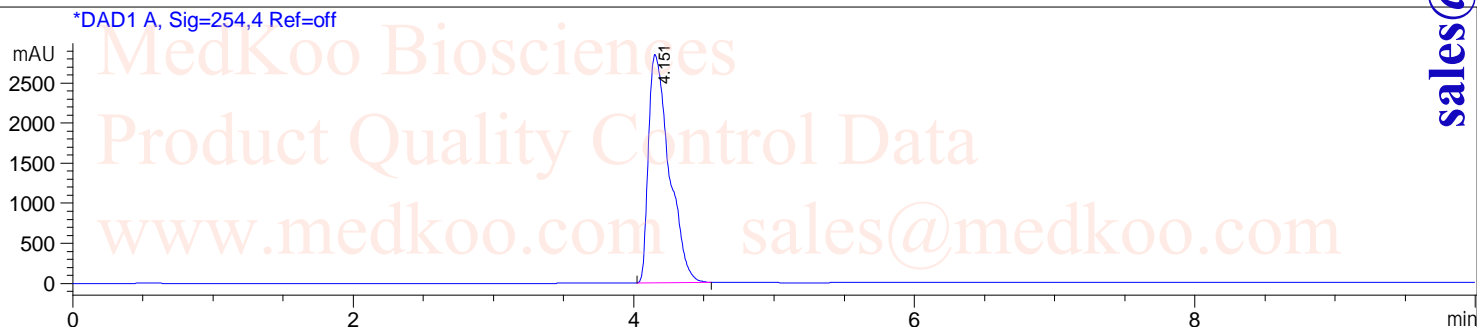
Peak #	Ret. Time [min]	Type	Width [min]	Area [mAU*s]	Height [mAU]	Area %
1	8.174	BV	0.0650	94.79567	22.58287	1.4560
2	8.367	VB	0.0683	6415.98584	1430.46985	98.5440
Total:				6510.78151	1453.05272	

MedKoo Cat#: 522365
 Name: Varespladib (LY315920)
 CAS#: 172732-68-2
 Lot#: BBC70210
 Chemical Formula: C₂₁H₂₀N₂O₅
 Exact Mass: 380.13722
 Molecular Weight: 380.4000

Varespladib LCMS Analysis

Sample Name : LY315920
Acq. Operator : [BSB1]
Spec. Reported : MS Integration
Acq. Method : C:\Chem32\1\METHODS\TEST KR POS_LC.M
Analysis Method : C:\Chem32\1\METHODS\TEST KR POS_LC.M

Tgt Mass(EZX) :
Location : Vial 96
Inj : 1
Inj Volume : 1 ul



Ret. Time: 4.32

<<<< POSITIVE SPECTRA >>>>

ES-API Positive

