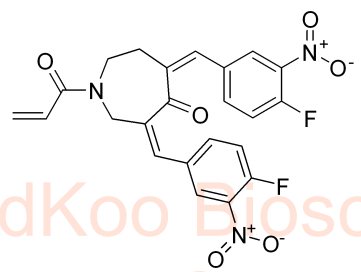


8.343
8.332
8.231
8.018
8.009
7.936
7.927
7.743
7.720
7.715
7.693
7.667
7.645
7.617
7.576
7.438
7.422
6.771
6.745
6.730
6.703
6.290
6.263
6.248
6.222
6.055
6.014
5.664
5.662
5.638
5.634
5.600
5.574
5.571
4.899
4.771
3.878
3.866
3.320
3.037
3.022
2.507
2.503
2.499
0.000

VLX1570 HNMR Analysis, Solvent = d6-DMSO

Product Quality Control Data

www.medkoo.com Sales@medkoo.com



MedKoo Cat#: 206324
Name: VLX1570
CAS#: 1431280-51-1
Lot#: A8T05K24
Chemical Formula: C23H17F2N3O6
Exact Mass: 469.1085
Molecular Weight: 469.40

MedKoo Biosciences

Product Quality Control Data

www.medkoo.com Sales@medkoo.com

MedKoo Biosciences

Product Quality Control Data

www.medkoo.com Sales@medkoo.com

1.00
0.99
1.86
3.06
0.98
0.51
0.47
1.01
1.00
2.02
2.01
1.99

10.0
ppm (t1)

MedKoo Biosciences

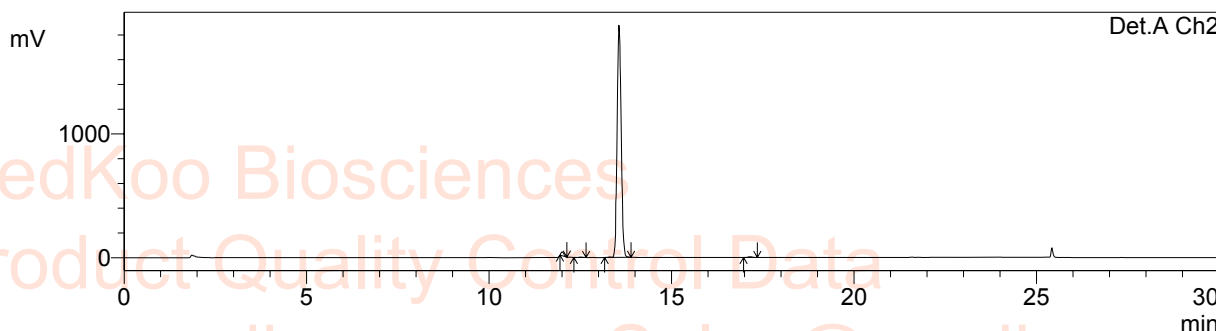
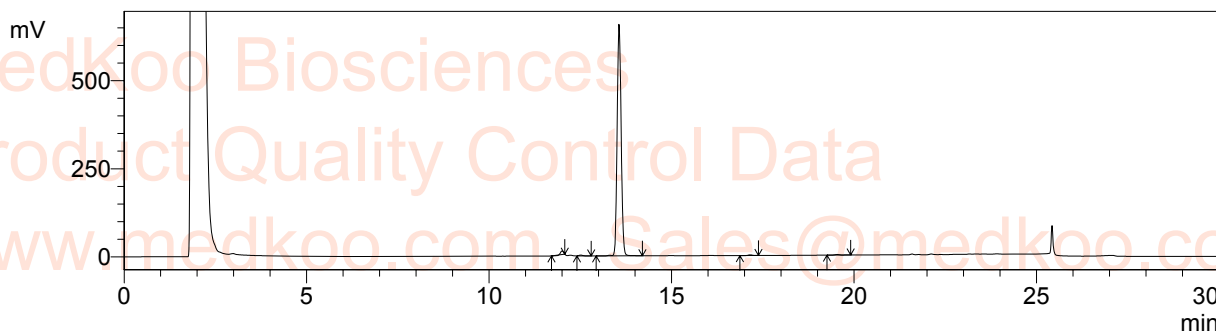
www.medkoo.com

sales@medkoo.com

7000C
6000C
5000C
4000C
3000C
2000C
1000C
0
-1000

VLX1570 HPLC Analysis

Column : Inertil ODS-3, 5um 4.6*150mm
 Mobile phase : Solvent A: H2O(0.05%H3PO4) Solvent B:ACN(0.05%H3PO4)
 Temperature : 40 °C
 Flow rate : 1mL/min
 Run time : 3min gradient(30%B), 15min gradient (30%-70%B),5 min(70%B),then 7min @(30%B)
 Detector : UV
 Wavelength : 220/254 nm
 User name : 1431280-51-1
 Notebook page :
 Sample description : 1431280-51-1
 Injection Volume : 1431280-51-1



1 Det.A Ch1/220nm
 2 Det.A Ch2/254nm

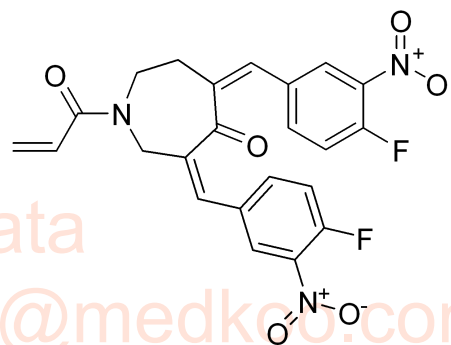
PeakTable

Detector A Ch1 220nm

Peak#	Ret. Time	Area	Area %	Theoretical Plate#
1	11.995	49233	0.969	92601.964
2	12.505	14950	0.294	63740.129
3	13.556	4993322	98.253	66107.424
4	17.147	15943	0.314	96579.667
Total		5082130	100.000	

Detector A Ch2 254nm

Peak#	Ret. Time	Area	Area %	Theoretical Plate#
1	11.996	168796	1.141	87908.158
2	12.504	21764	0.147	64562.030
3	13.557	14553993	98.399	63543.523
4	17.146	46302	0.313	98286.979
Total		14790855	100.000	



MedKoo Cat#: 206324

Name: VLX1570

CAS#: 1431280-51-1

Lot#: A8T05K24

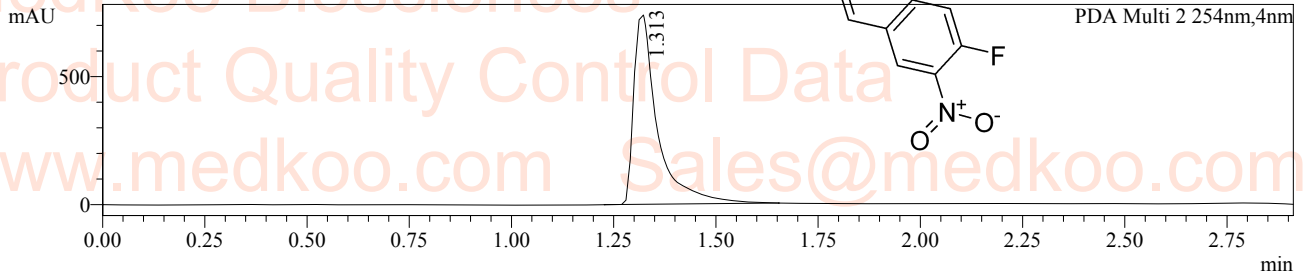
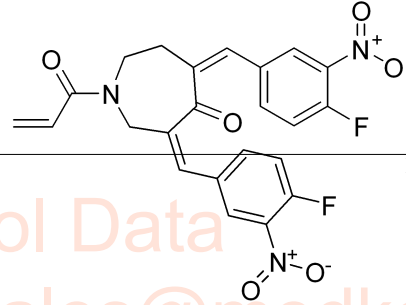
Chemical Formula: C23H17F2N3O6

Exact Mass: 469.1085

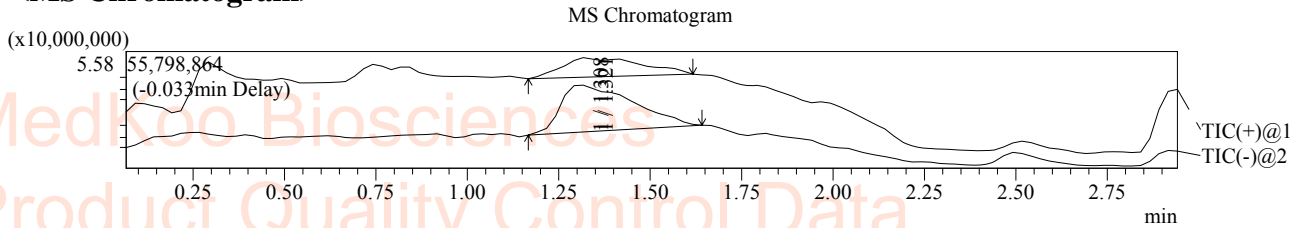
Molecular Weight: 469.40

VLX1570 LC/MS Analysis

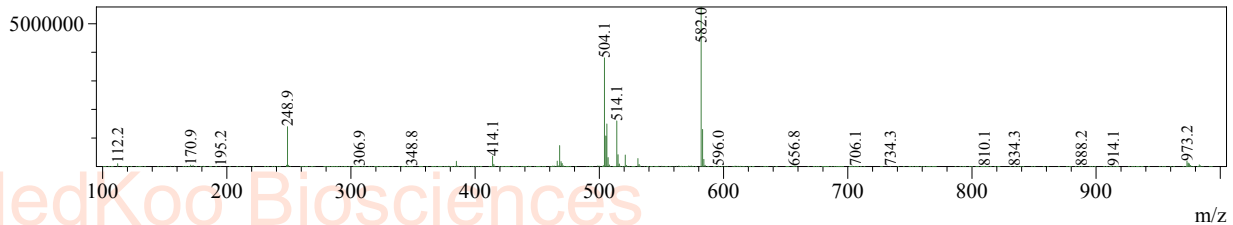
LC-MS condition
 Column : Chromolith SpeedROD ,RP-18e,50*4.6mm LCMS-002
 Mobile Phase : A: H2O(0.05%FA)
 B: CH3CN
 Temperature : 35 °C
 Flow rate : 2.5mL/min
 Run time : 0.1min@20%B,1.7min gradient(20-95% B), then0.7min@95% B,then0.4min@20% B
 Injection volume : 5 uL
 Detector : UV 220/254nm
 Mass range : 100-1000
 Scan : Postive/Negative
 User Name : 1431280-51-1
 Data Filename : 1431280-51-1.lcd



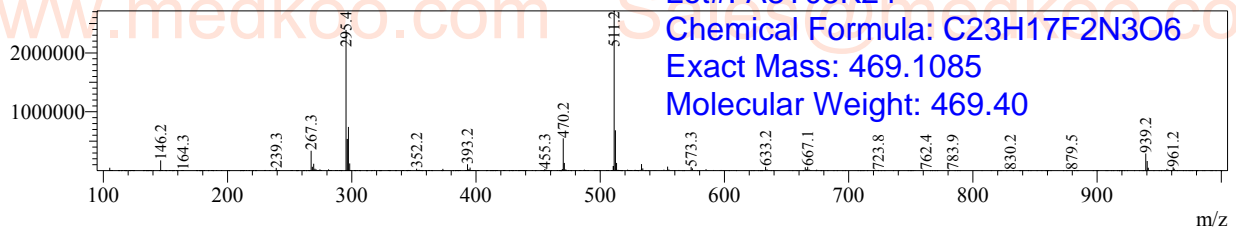
<MS Chromatogram>



Peak#:1 R.Time:1.308(Scan#:100)
 MassPeaks:410
 Spectrum Mode:Averaged 1.275-1.325(98-102)
 BG Mode:Calc Segment 1 - Event 2



Peak#:1 R.Time:1.321(Scan#:101)
 MassPeaks:444
 Spectrum Mode:Averaged 1.292-1.342(99-103)
 BG Mode:Calc Segment 1 - Event 1



MedKoo Cat#: 206324
 Name: VLX1570
 CAS#: 1431280-51-1
 Lot#: A8T05K24
 Chemical Formula: C₂₃H₁₇F₂N₃O₆
 Exact Mass: 469.1085
 Molecular Weight: 469.40