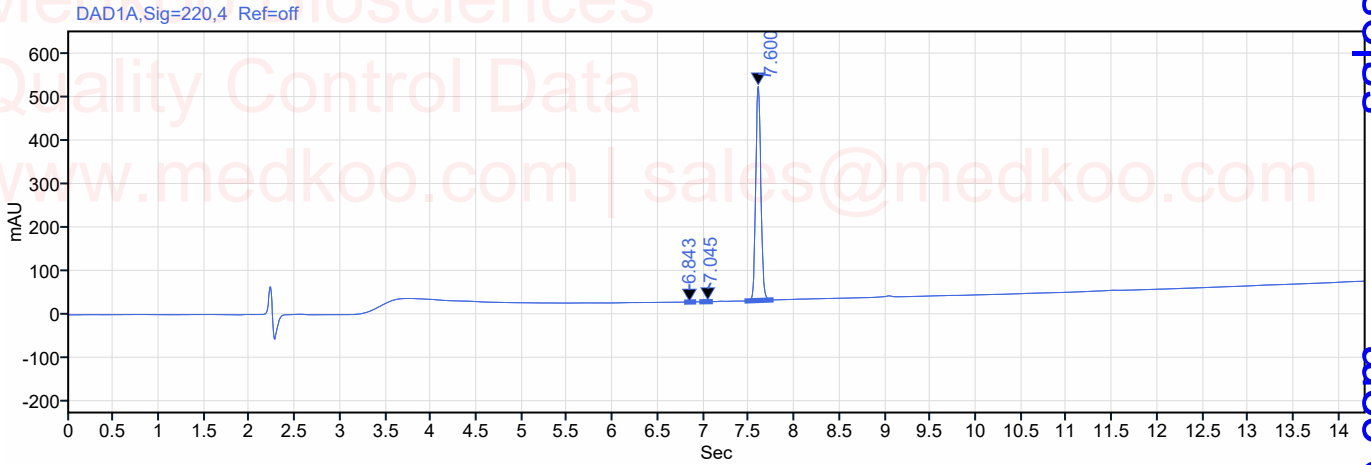


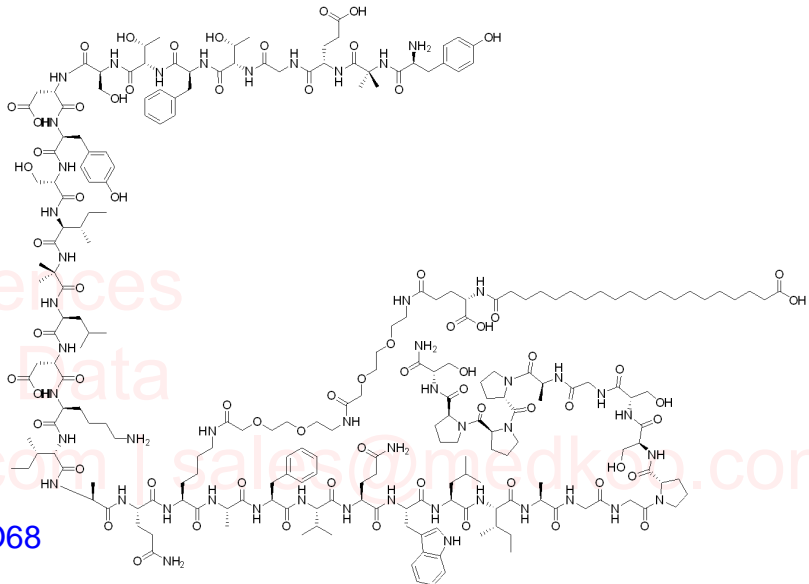
# Tirzepatide HPLC Analysis

**Sample name:** 2023788-19-2  
**Instrument:** A012  
**Inj. volume:** 3  
**Acq. method:** HPLC  
**Processing method:**  
**Manually modified:**



Signal: DAD1A, Sig=220,4 Ref=off

RT [min]	Peak Resolution USP	Area	Height	Area%
6.843		0.6	0.1	0.032
7.045		10.1	2.6	0.515
7.600		1943.0	493.1	99.452



MedKoo Cat#: 333103

Name: Tirzepatide

CAS#: 2023788-19-2

Lot#: A23T07K26

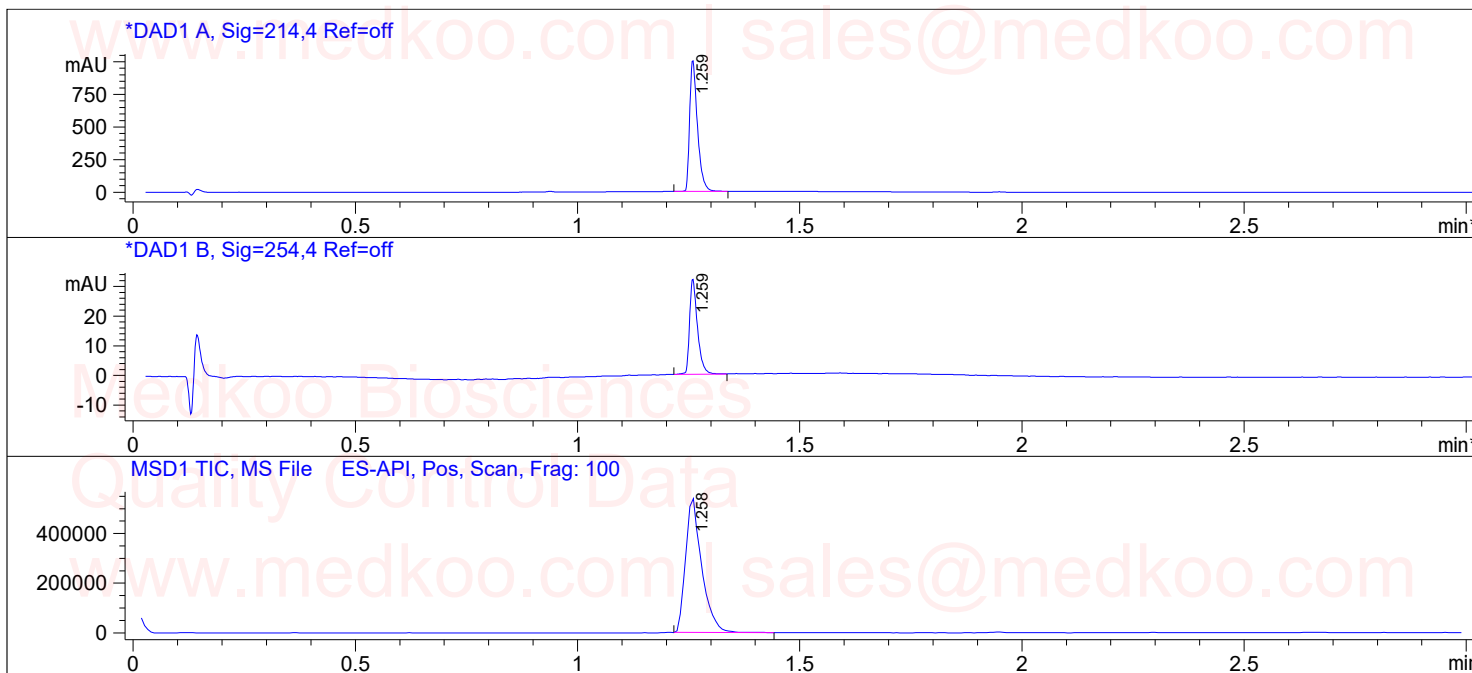
Chemical Formular: C225H348N48O68

Exact Mass: 4810.525

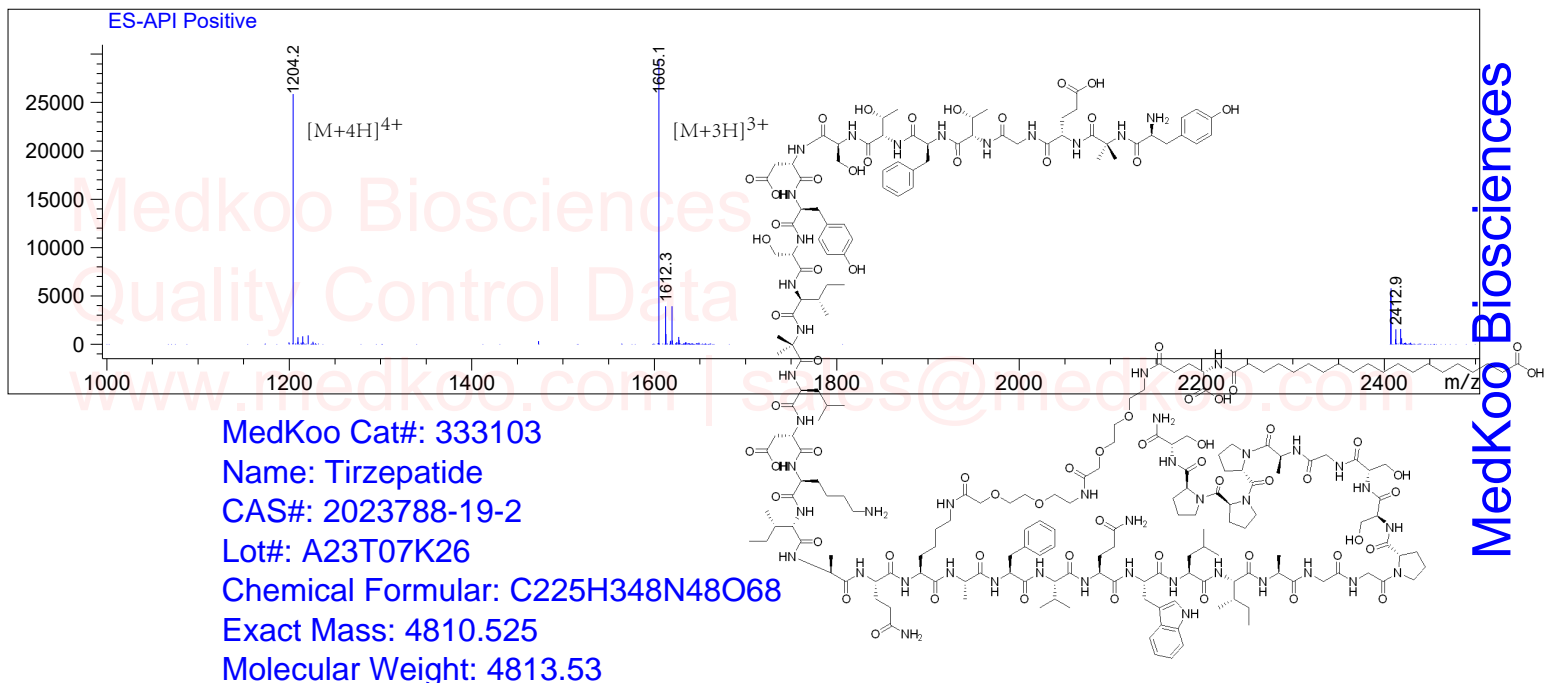
Molecular Weight: 4813.53

# Tirzepatide LC/MS Analysis

Sample Name : 2023788-19-2  
Acq. Operator : A11  
Spec. Reported : MS Integration  
Acq. Method : D:\METHODS\1-POS-3MIN-1000-250  
Analysis Method : D:\METHODS\1-POS-3MIN-1000-2500.M  
Sample Info : Easy-Access Method: '1-POS-3MIN-1000-2500'  
Method Info : Mobile Phase: A: water(0.01%TFA) B: ACN(0.01%TFA)  
Gradient: 5%B increase to 95%B within 1.3 min, 95%B for 1.7 min.  
Flow Rate: 2.0ml/min  
Column:Agilent Poroshell 120 EC-C18,4.6\*50mm,4-Micron  
Column Temperature: 50 C  
Detection:UV(214,4nm) and MS(ESI,Pos mode,1000 to 2500 amu)



Ret. Time: 1.26 <<<< POSITIVE SPECTRA >>>>

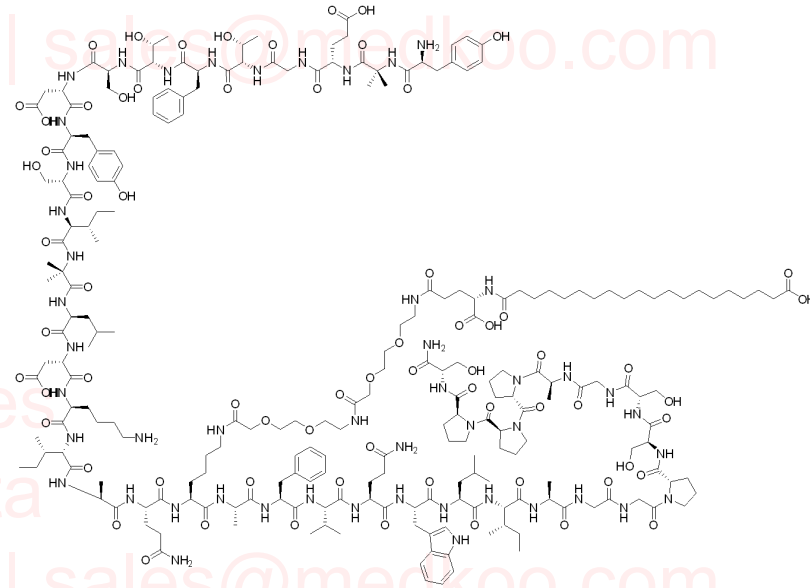


sales@medkoo.com

www.medkoo.com

MedKoo Biosciences

MedKoo Cat#: 333103  
 Name: Tirzepatide  
 CAS#: 2023788-19-2  
 Lot#: A23T07K26  
 Chemical Formular: C225H348N48O68  
 Exact Mass: 4810.525  
 Molecular Weight: 4813.53



7.148  
 7.046  
 6.995  
 6.875  
 6.793  
 6.666  
 4.701  
 4.675  
 4.026  
 3.956  
 3.843  
 3.839  
 3.820  
 3.591  
 3.545  
 3.385  
 3.282  
 3.119  
 2.878  
 2.534  
 2.297  
 2.193  
 2.030  
 1.924  
 1.913  
 1.827  
 1.823  
 1.810  
 1.487  
 1.472  
 1.467  
 1.400  
 1.382  
 1.342  
 1.325  
 1.220  
 1.108  
 1.094  
 0.983  
 0.968  
 0.829  
 0.810  
 0.779  
 0.751

1.07  
 3.67  
 0.85  
 0.79  
 1.00  
 0.74

20.76  
 18.02  
 18.25  
 15.29  
 18.25  
 12.54

8 6 4 2 0 -2PPM

Avance, D2O,		USER: root -- DATE: Wed Jul 26 05:45:19	
F1: 400.182	F2: 1.000	SW1: 8621	OF1: 1900.9
EX: zg30	PD: 1.00	2023d: 65536	LB: 0.0