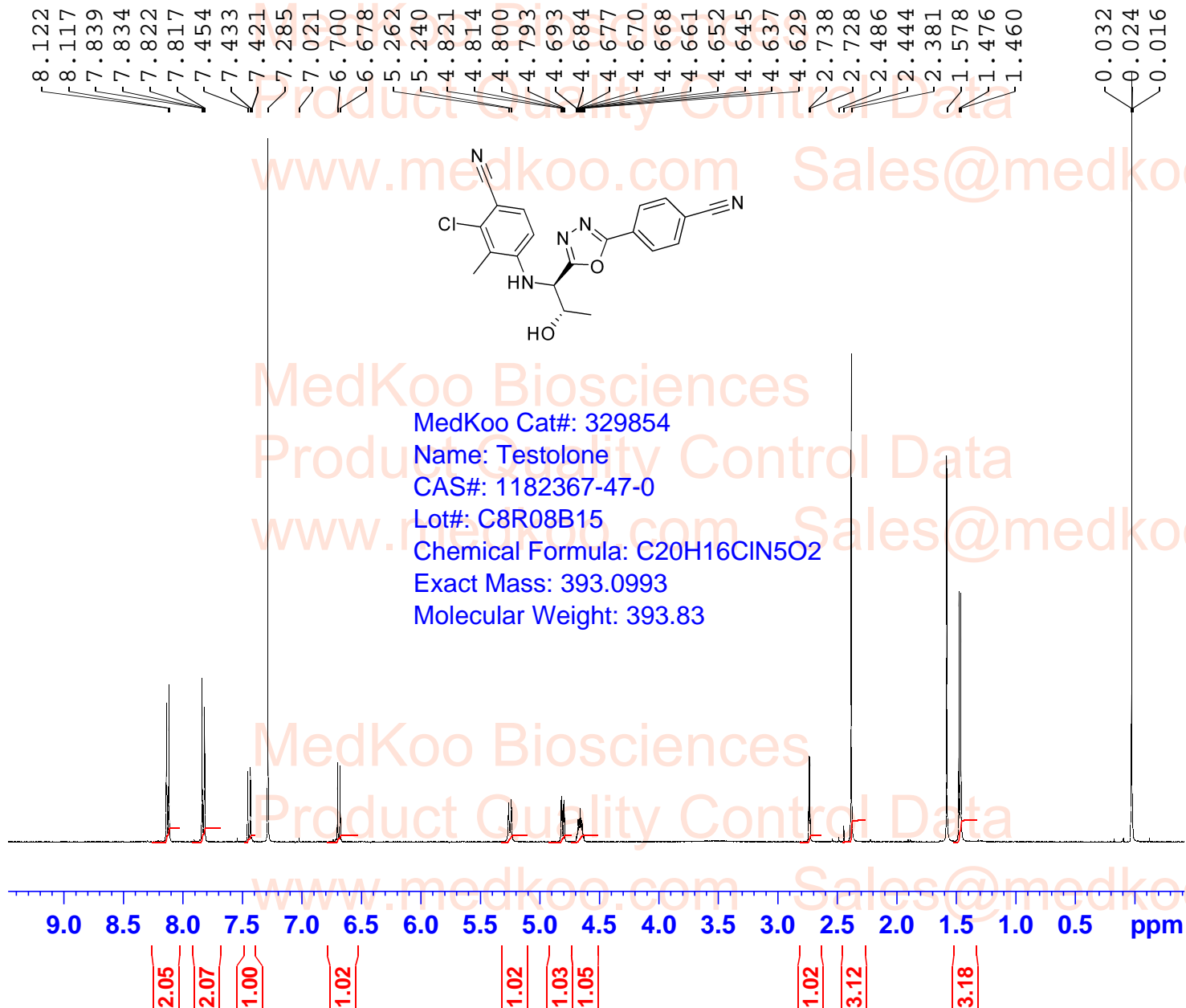


Testolone HNMR Analysis, Solvent = CDCl3



MedKoo Cat#: 329854
 Name: Testolone
 CAS#: 1182367-47-0
 Lot#: C8R08B15
 Chemical Formula: C₂₀H₁₆ClN₅O₂
 Exact Mass: 393.0993
 Molecular Weight: 393.83

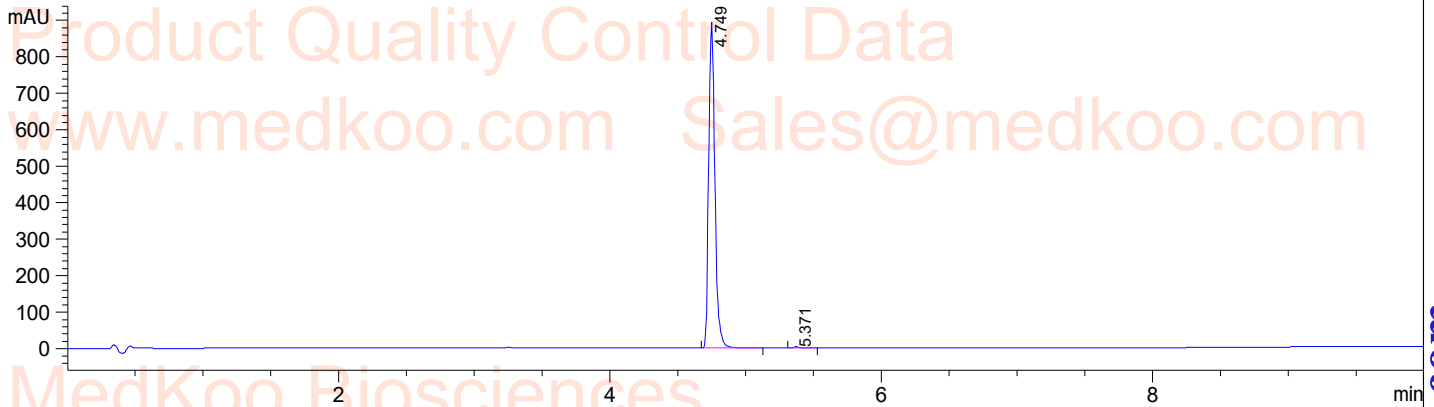
Current Data Parameters
 NAME 1182367-47-0
 EXPNO 1
 PROCNO 1
 F2 - Acquisition Parameters
 INSTRUM spect
 PROBHD 5 mm PADUL 13C
 PULPROG zg30
 TD 65536
 SOLVENT CDCl3
 NS 16
 DS 2
 SWH 8012.820 Hz
 FIDRES 0.122266 Hz
 AQ 4.0894465 sec
 RG 199.46
 DW 62.400 usec
 DE 6.50 usec
 TE 298.2 K
 D1 1.0000000 sec
 TD0 1
 ===== CHANNEL f1 =====
 SFO1 400.1324710 MHz
 NUC1 1H
 P1 10.00 usec
 PLW1 20.0000000 W
 F2 - Processing parameters
 SI 65536
 SF 400.1300000 MHz
 WDW EM
 SSB 0
 LB 0.30 Hz
 GB 0
 PC 1.00

Testolone HPLC Analysis

Sample Name : 1182367-47-0
Acq. Operator : 1
Spec. Reported : Integration

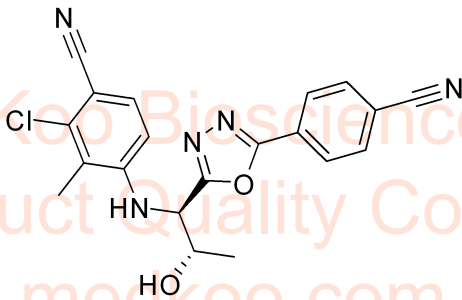
Tgt Mass(EZX) :
Location : Vial 59
Inj : 0
Inj Volume : 8 ul

DAD1 B, Sig=214,4 Ref=360,100



Integration Results for DAD1 B, Sig=214,4 Ref=360,100

RetTim	Width	Area	Height	Area%
4.75	0.05	2878.85	893.27	99.60
5.37	0.05	11.48	3.45	0.40



MedKoo Cat#: 329854

Name: Testolone

CAS#: 1182367-47-0

Lot#: C8R08B15

Chemical Formula: C₂₀H₁₆CIN₅O₂

Exact Mass: 393.0993

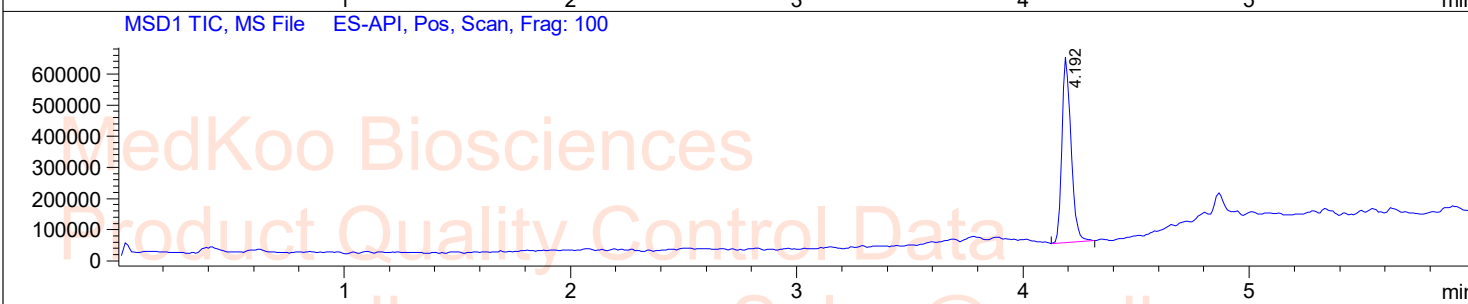
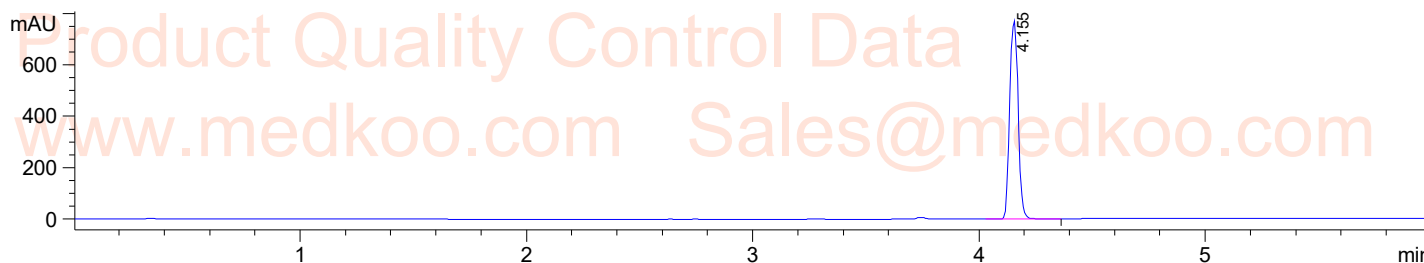
Molecular Weight: 393.83

Testolone LC/MS Analysis

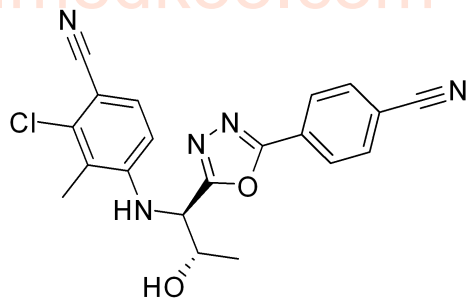
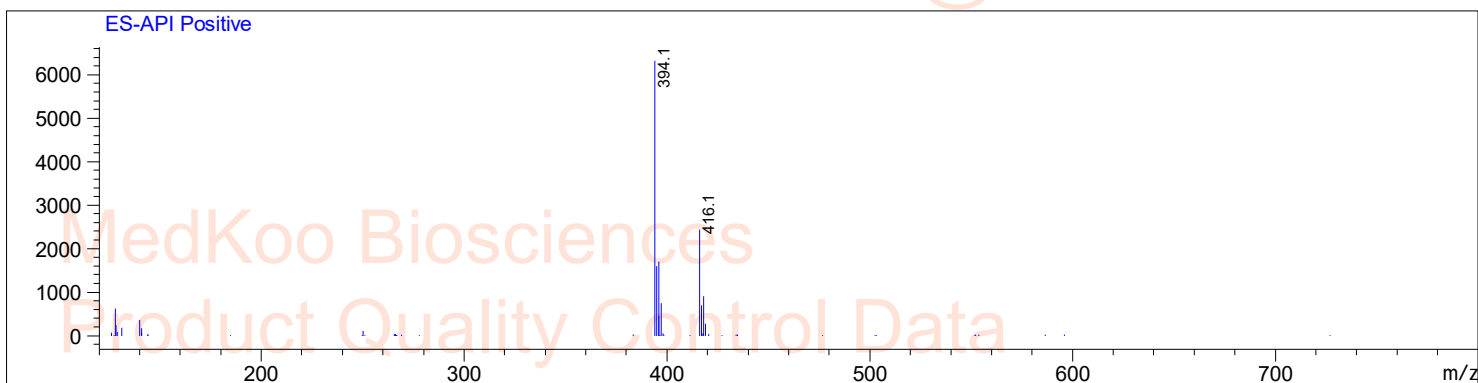
Sample Name : 1182367-47-0
Acq. Operator : D
Spec. Reported : MS Integration

Tgt Mass(EZX) :
Location : P2-A-06
Inj : 1
Inj Volume : 5 ul

MedKoo Biosciences



Ret. Time: 4.19 <<<< POSITIVE SPECTRA >>>>



MedKoo Cat#: 329854
Name: Testolone
CAS#: 1182367-47-0
Lot#: C8R08B15
Chemical Formula: C₂₀H₁₆CIN₅O₂
Exact Mass: 393.0993
Molecular Weight: 393.83

sales@medkoo.com

www.medkoo.com

MedKoo Biosciences