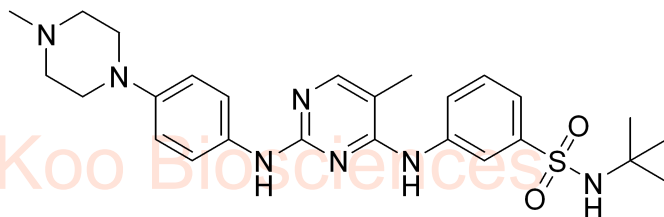


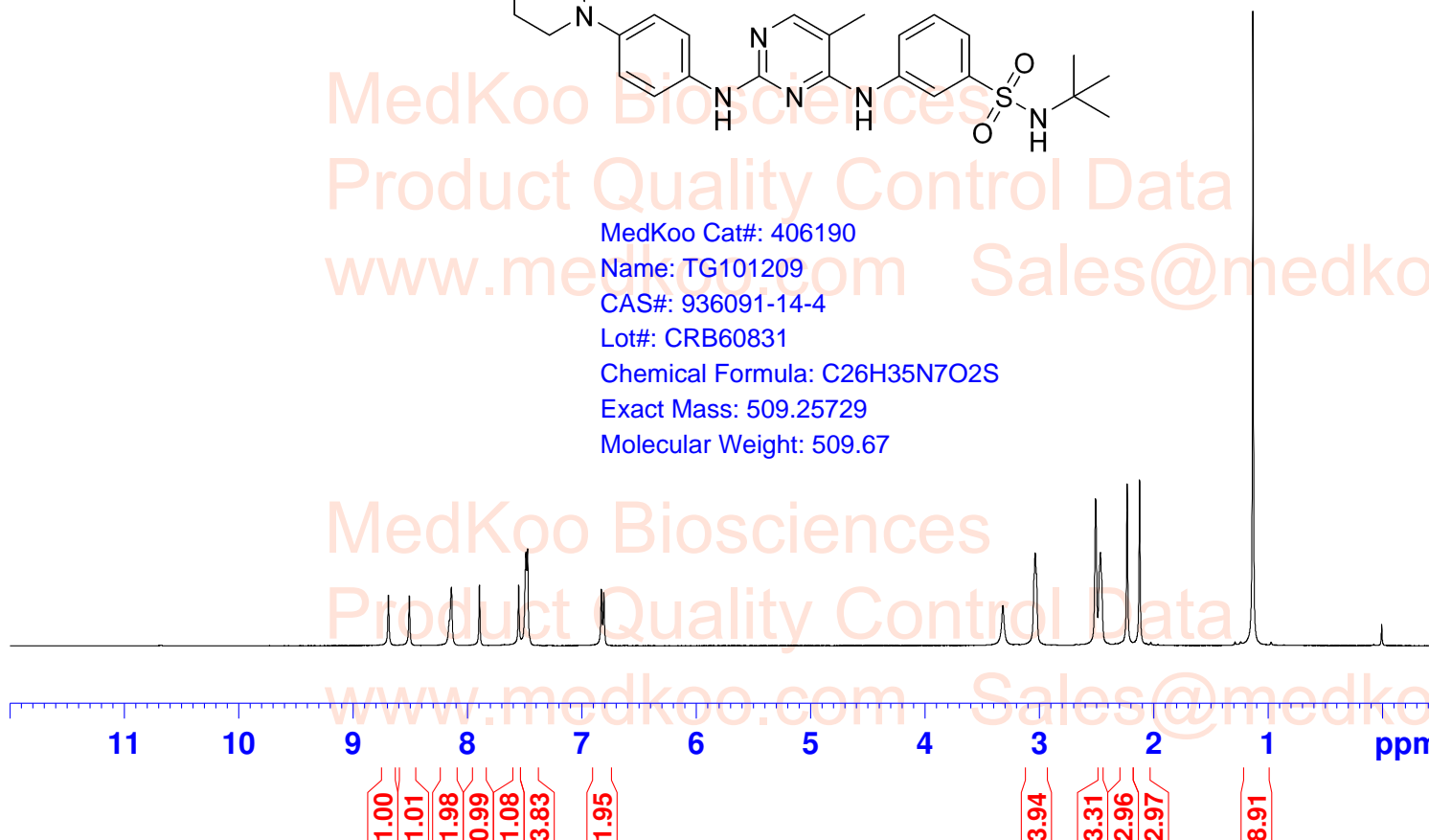
TG-101209 HNMR Analysis, Solvent = DMSO

8.693
8.510
8.142
7.897
7.554
7.490
7.476
6.831
6.809
3.319
3.037
2.508
2.466
2.233
2.124
1.133



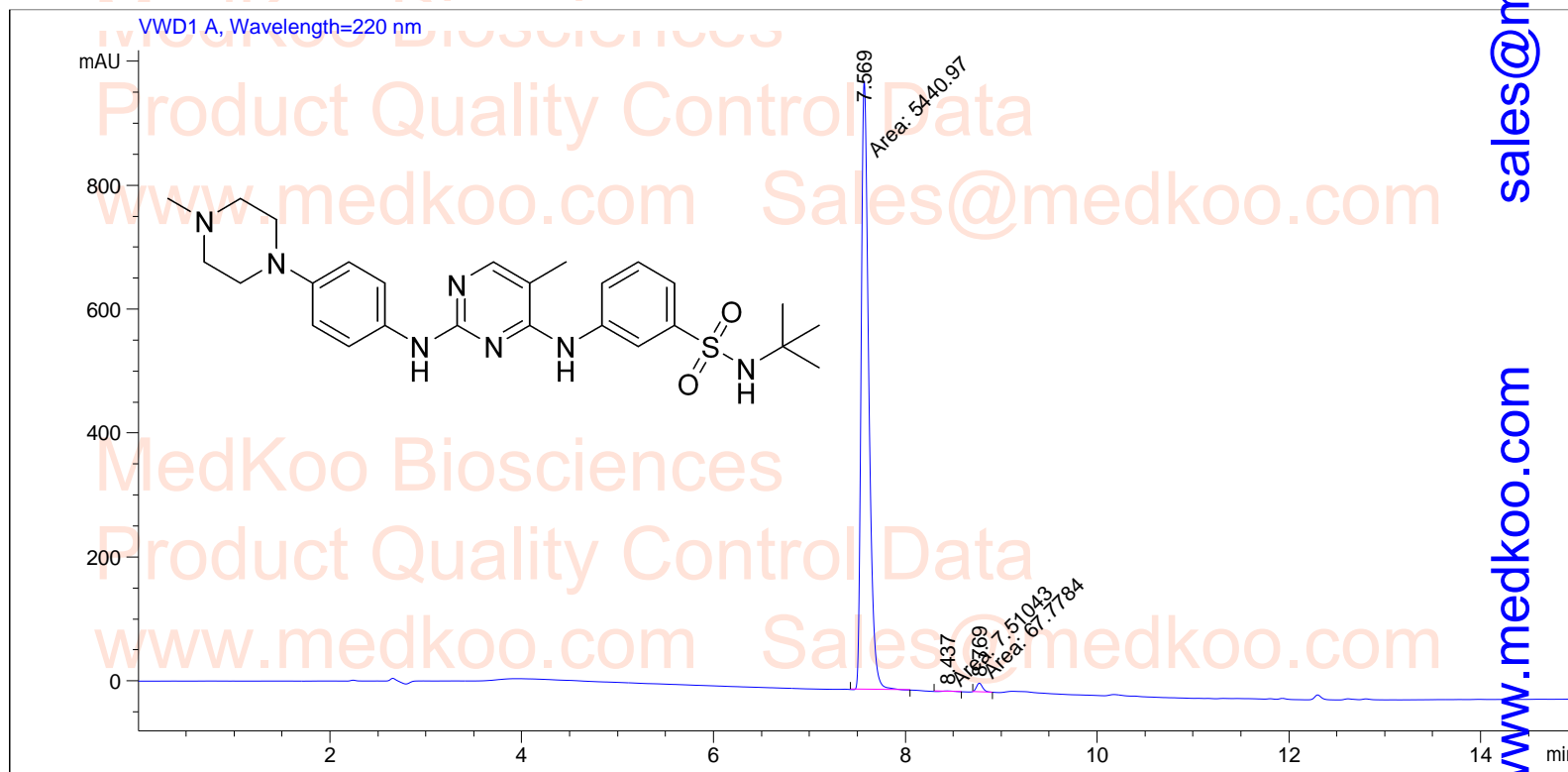
MedKoo Cat#: 406190
Name: TG101209
CAS#: 936091-14-4
Lot#: CRB60831
Chemical Formula: C₂₆H₃₅N₇O₂S
Exact Mass: 509.25729
Molecular Weight: 509.67

```
NAME TG101209
EXPNO 1
PROCNO 1
INSTRUM spect
PROBHD 5 mm PABBO
PULPROG BB-zg30
TD 65536
SOLVENT DMSO
NS 16
DS 0
SWH 8223.685 Hz
FIDRES 0.125483 Hz
AQ 3.9846387 sec
RG 128
DW 60.800 usec
DE 6.50 usec
TE 300.2 K
D1 1.00000000 sec
TD0 1
===== CHANNEL f1 =====
NUC1 1H
P1 10.85 usec
PL1 -4.00 dB
PL1W 20.19063568 W
SFO1 400.1324710 MHz
SI 32768
SF 400.1300000 MHz
WDW EM
SSB 0
LB 0.30 Hz
GB 0
PC 1.00
```



TG-101209 HPLC Analysis

Acq. Operator : Seq. Line : 3
 Acq. Instrument : LC1260 Location : Vial 27
 Inj : 1
 Inj Volume : 0 µl
 Different Inj Volume from Sequence ! Actual Inj Volume : 3 µl
 Acq. Method : E:\DATA\Data\10-90 AC 15MIN.M
 Analysis Method : D:\PUBLIC\DEF_LC (5-95) 6MIN.M



Area Percent Report

Sorted By : Signal
 Multiplier : 1.0000
 Dilution : 1.0000

Use Multiplier & Dilution Factor with ISTDs

Signal 1: VWD1 A, Wavelength=220 nm

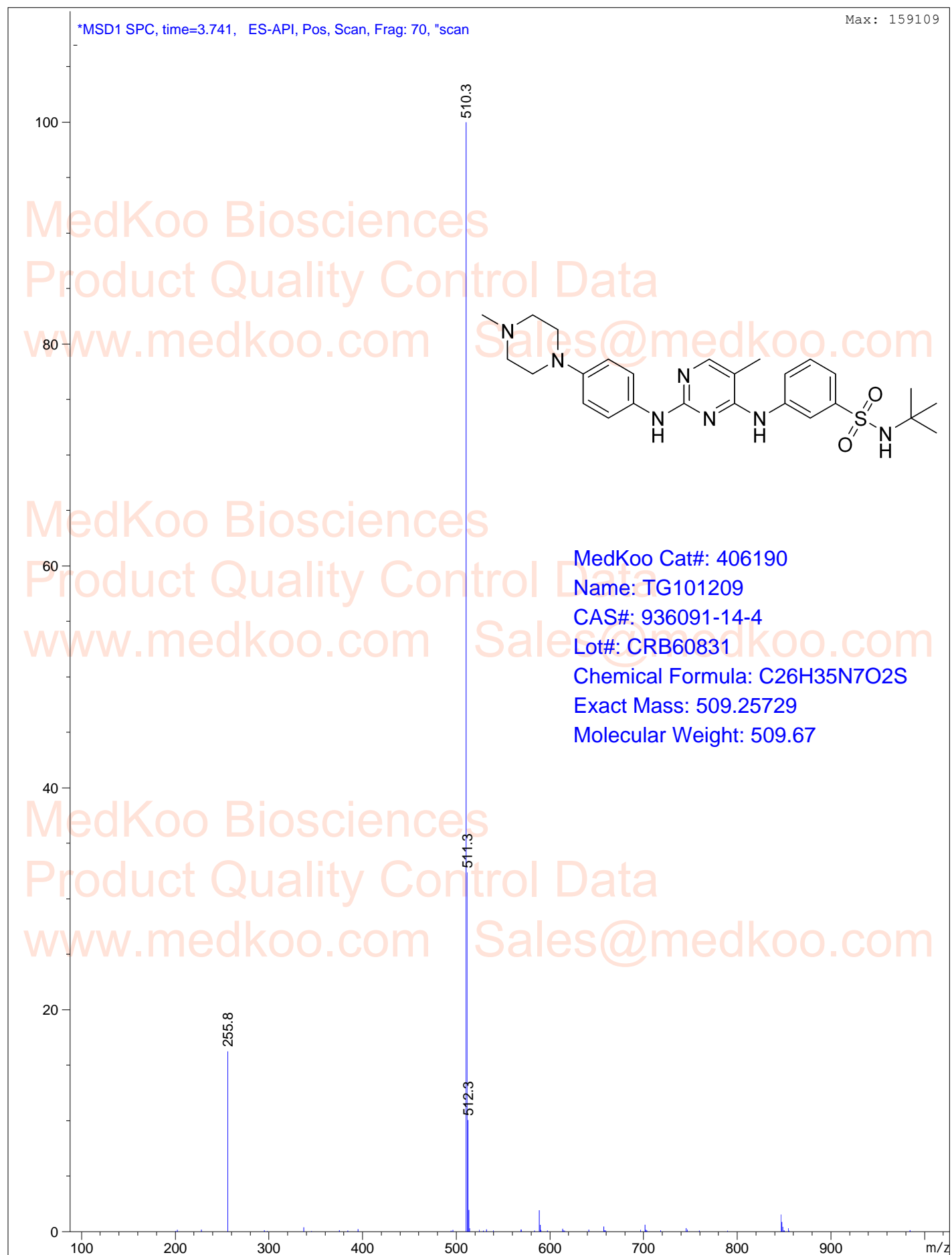
Peak #	RetTime [min]	Type	Width [min]	Area [mAU*s]	Height [mAU]	Area %
1	7.569	MM	0.0922	5440.96729	983.45020	98.6351
2	8.437	MM	0.1217	7.51043	1.02841	0.1362
3	8.769	MM	0.0777	67.77836	14.53884	1.2287

Totals : 5516.25607 999.01745

MedKoo Cat#: 406190
 Name: TG101209
 CAS#: 936091-14-4
 Lot#: CRB60831
 Chemical Formula: C₂₆H₃₅N₇O₂S
 Exact Mass: 509.25729
 Molecular Weight: 509.67

TG-101209 MS Analysis

MS Spectrum



sales@medkoo.com

www.medkoo.com

MedKoo Biosciences