

11.579

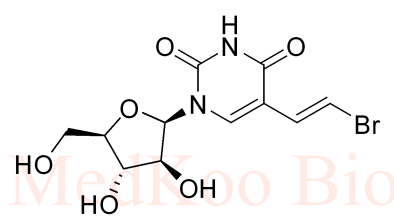
7.893
7.257
7.223
6.895
6.861
5.990
5.979
5.581
5.568
5.482
5.471
5.140
5.127
5.112

4.117
4.104
4.036
4.026
3.916
3.907
3.754
3.743
3.650
3.637
3.625
3.341
3.173
3.160
2.511
2.507
2.502
2.498
2.494

-0.001

Sorivudine HNMR Analysis in DMSO

MedKoo Biosciences
Product Quality Control Data
www.medkoo.com sales@medkoo.com



MedKoo Cat#: 328023
Name: Sorivudine
CAS#: 77181-69-2
Lot#: T20D04P20
Chemical Formula: C11H13BrN2O6
Exact Mass: 347.9957
Molecular Weight: 349.14

MedKoo Biosciences
Product Quality Control Data
www.medkoo.com sales@medkoo.com

1.01

1.03

1.00

1.01

1.03

2.13

1.03

1.08

2.04

1.02

1.06

0.86

12 10 8 6 4 2 0 PPM

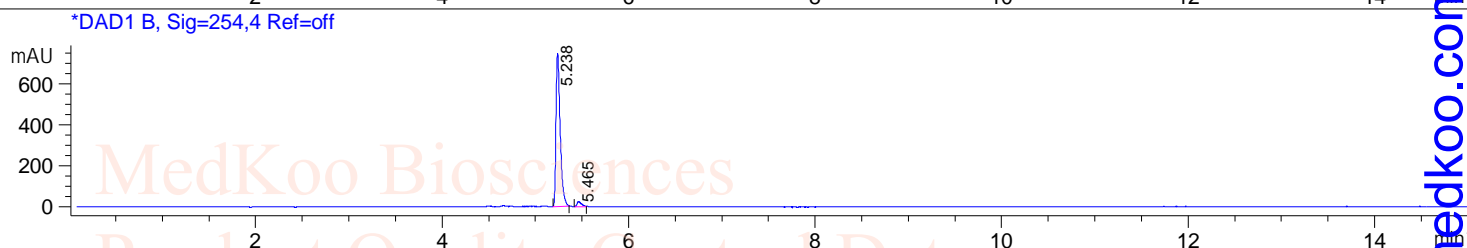
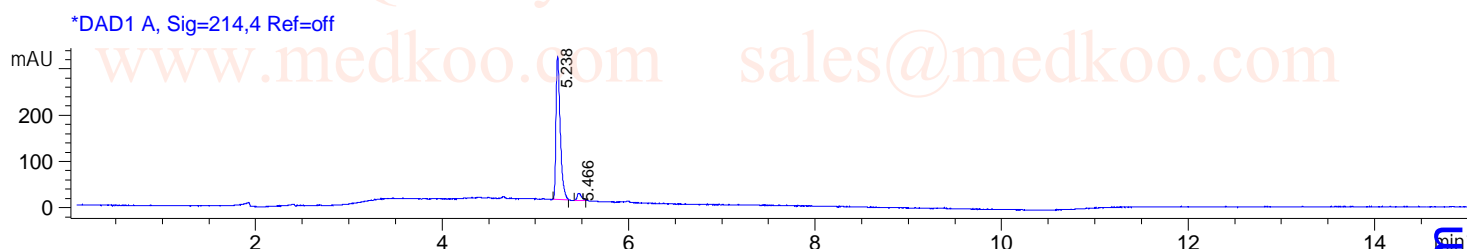
NMRB003, DMSO,

F1: 400.232	F2: 1.000	SW1: 8224	OF1: 2473.0	PTS1d: 32768
EX: zg30	www.medkoo.com	PD: 1.00 sec	www.medkoo.com	LB: 0.0 sales@medkoo.com Nuts - \$pdata

MedKoo Biosciences www.medkoo.com sales@medkoo.com

Sorivudine HPLC Analysis

Sample Name : sorivudine **Location** : P2-A-03
Acq. Operator : **Inj** : 1
Spec. Reported : MS Integration **Inj Volume** : 1 ul
Acq. Method : D:\METHODS\1-POS-15MIN.M
Analysis Method : D:\METHODS\1-POS-15MIN.M
Sample Info : Easy-Access Method: '1-POS-15MIN.M'
Method Info : Mobile Phase: A: water(0.01%TFA) B: ACN(0.01%TFA)
 Gradient: 5%B increase to 95%B within 8.0 min, 95%B for 7.0 min.
 Flow Rate: 1.0ml/min
 Column: Sunfire C18, 4.6*150mm, 3.5um
 Column Temperature: 40 C
 Detection: UV(214,4nm) and MS(ESI, Pos mode, 110 to 1500 amu)

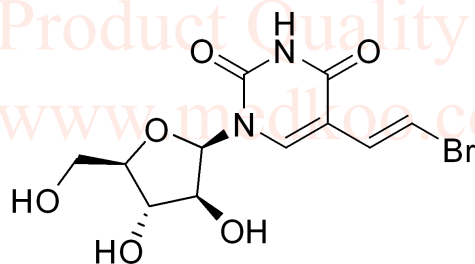


Integration Results for DAD1 A, Sig=214,4 Ref=off

RetTim	Width	Area	Height	Area%
5.24	0.05	974.77	311.54	95.79
5.47	0.04	53.55	15.81	4.21

Integration Results for DAD1 B, Sig=254,4 Ref=off

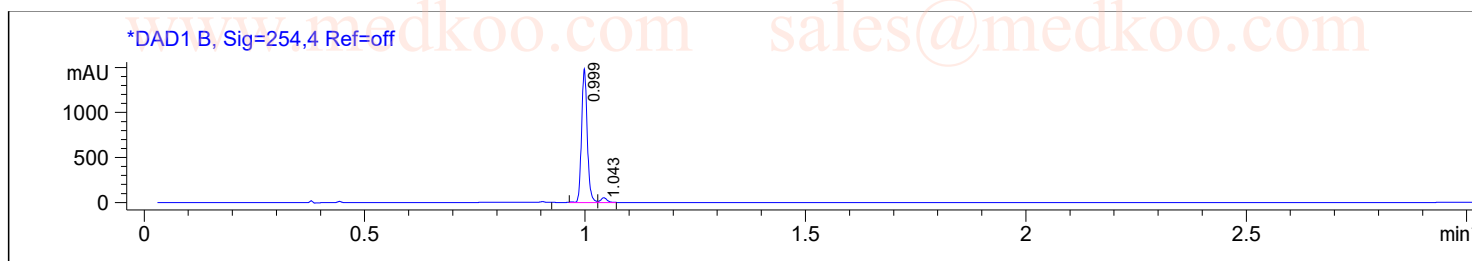
RetTim	Width	Area	Height	Area%
5.24	0.05	2323.36	749.28	96.75
5.47	0.05	78.13	23.42	3.25



MedKoo Cat#: 328023
 Name: Sorivudine
 CAS#: 77181-69-2
 Lot#: T20D04P20
 Chemical Formula: C₁₁H₁₃BrN₂O₆
 Exact Mass: 347.9957
 Molecular Weight: 349.14

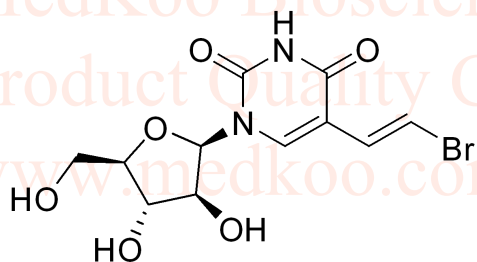
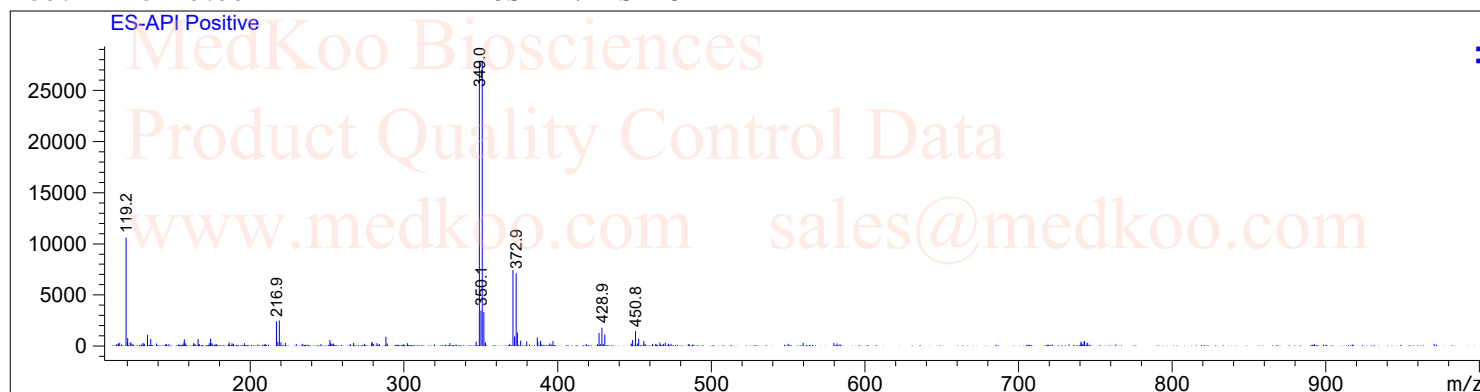
Sorivudine LC/MS Analysis

Sample Name : sorivudine Tgt Mass(EZX) :
Acq. Operator : Location : P1-F-05
Spec. Reported : MS Integration Inj : 1
Acq. Method : C:\CHEM32\1\METHODS\1-POS-3MIN.M Inj Volume : 1 ul
Analysis Method : C:\CHEM32\1\METHODS\1-POS-3MIN.M
Sample Info : Easy-Access Method: '1-POS-3MIN'
Method Info : Mobile Phase: A:Water(10mM NH4HCO3) B:ACN
Gradient: 5%B increase to 95%B within 1.3min,95%B for 1.7min
Flow Rate: 1.8 ml/min
Column:Xbridge C18,3.5um,4.6*50mm
Column Temperature:45C
Detection:UV(214,4nm) and MS(ESI,Pos mode,110 to 1000 amu)



Ret. Time: 0.99

<<<< POSITIVE SPECTRA >>>>



MedKoo Cat#: 328023

Name: Sorivudine

CAS#: 77181-69-2

Lot#: T20D04P20

Chemical Formula: C₁₁H₁₃BrN₂O₆

Exact Mass: 347.9957

Molecular Weight: 349.14