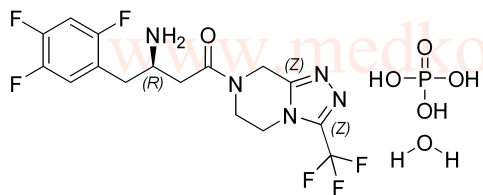


Sitagliptin Phosphate Monohydrate HNMR Analysis, Solvent: D2O



MedKoo Cat#: 300146
Name: Sitagliptin Phosphate Monohydrate
CAS#: 654671-77-9
Lot#: C20R07B24
Chemical Formula: C₁₆H₂₀F₆N₅O₆P
Molecular Weight: 523.32



Sitagliptin Phosphate Monohydrate

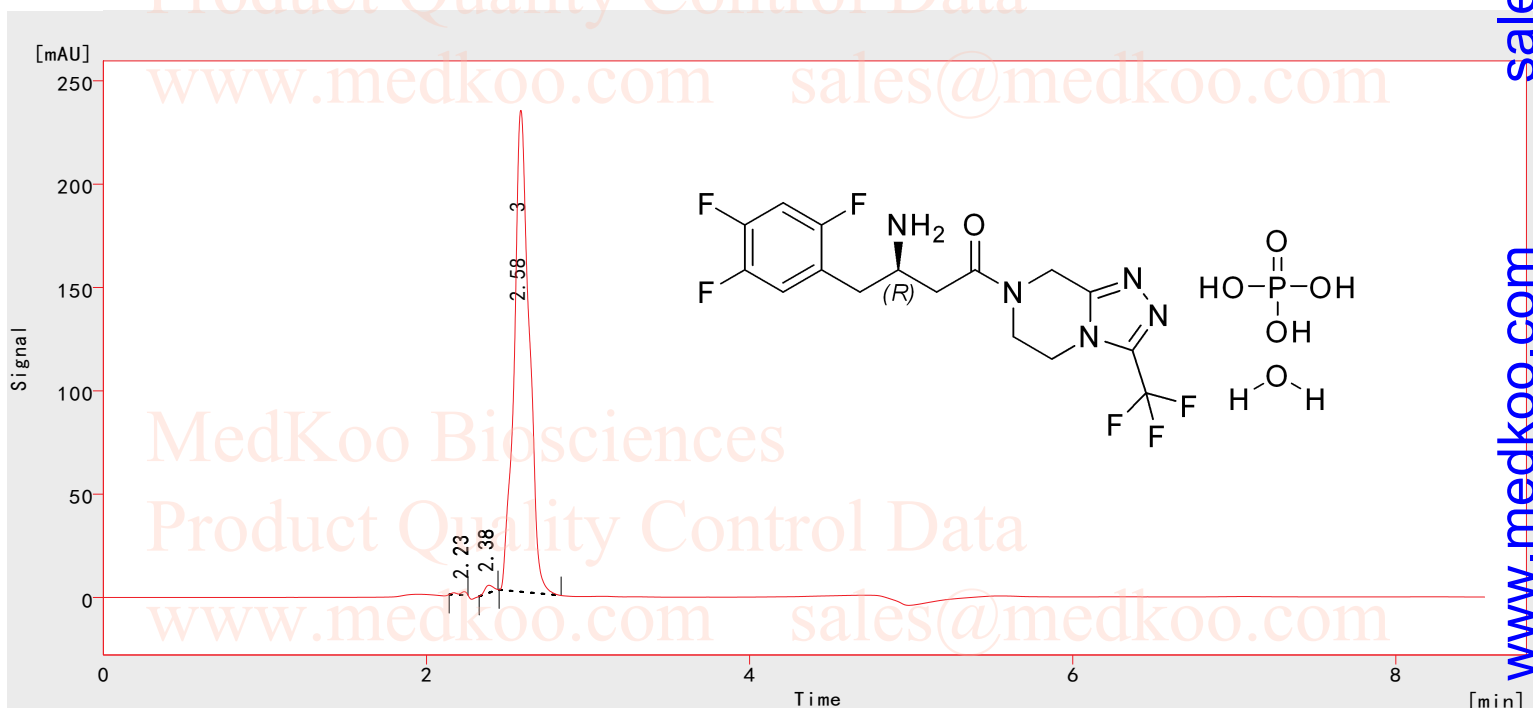
HPLC Analysis

Chromatogram Information:

File Name : D:\CZC\6.PRM
Project : D:\W3200\DataFiles\Projects\Work1.PRJ

Sample Information:

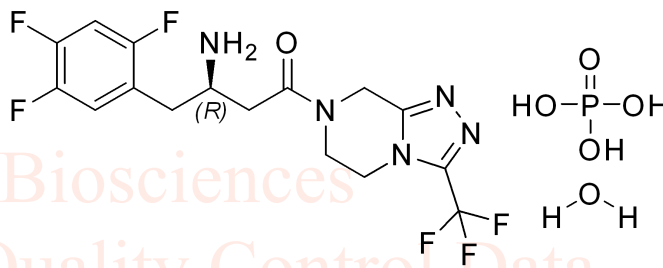
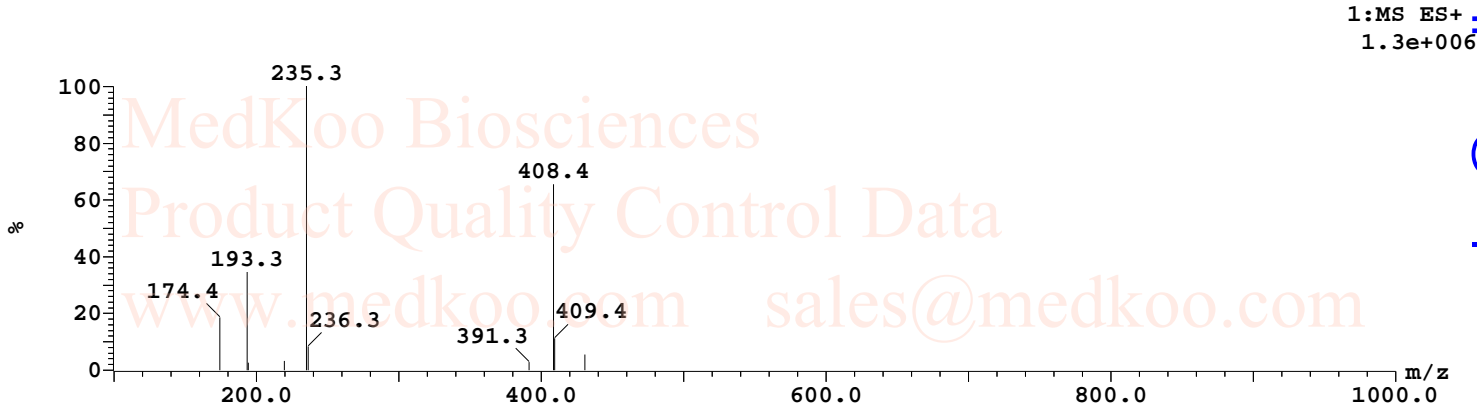
Sample ID : 5 Total : 0
Sample : 4 Internal Std : 0
Inj. Volume [µL] : 0 Dilution : 1
Method : 90B10



	Ret. Time [min]	Area [mAU. s]	Height [mAU]	Area [%]
1	2.232	5.721	1.589	0.4
2	2.385	12.849	3.680	0.8
3	2.583	1510.545	232.880	98.8
Total		1529.116	238.150	100.0

MedKoo Cat#: 300146
Name: Sitagliptin Phosphate Monohydrate
CAS#: 654671-77-9
Lot#: C20R07B24
Chemical Formula: C₁₆H₂₀F₆N₅O₆P
Molecular Weight: 523.32

Sitagliptin Phosphate Monohydrate MS analysis



MedKoo Cat#: 300146
Name: Sitagliptin Phosphate Monohydrate
CAS#: 654671-77-9
Lot#: C20R07B24
Chemical Formula: C₁₆H₂₀F₆N₅O₆P
Molecular Weight: 523.32

Sitagliptin (free base)
Chemical Formula: C₁₆H₁₅F₆N₅O
Exact Mass: 407.11808; Molecular Weight: 407.31