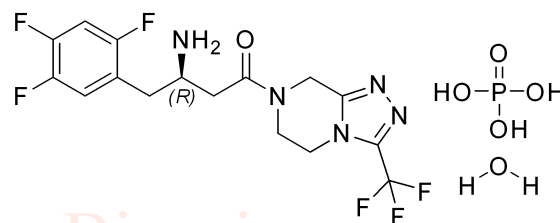
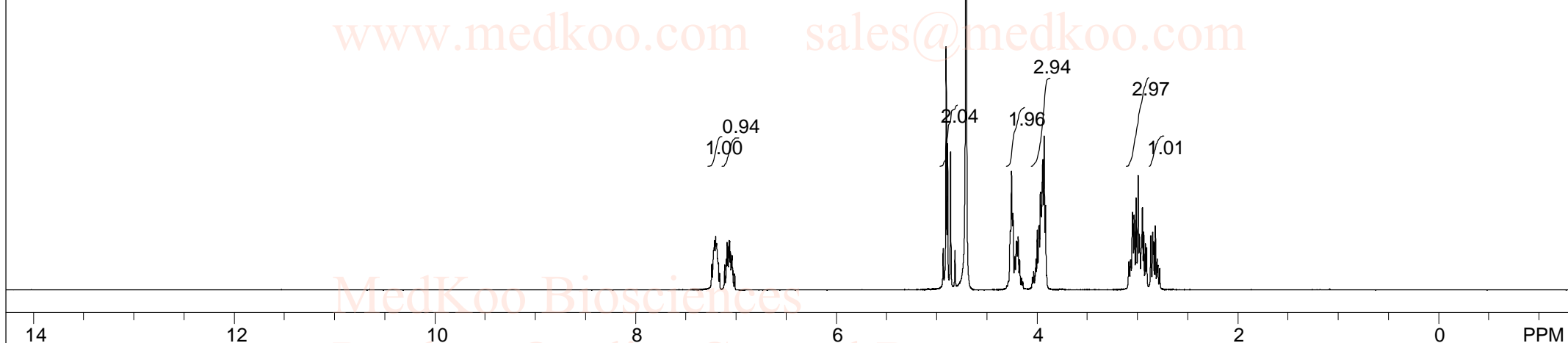
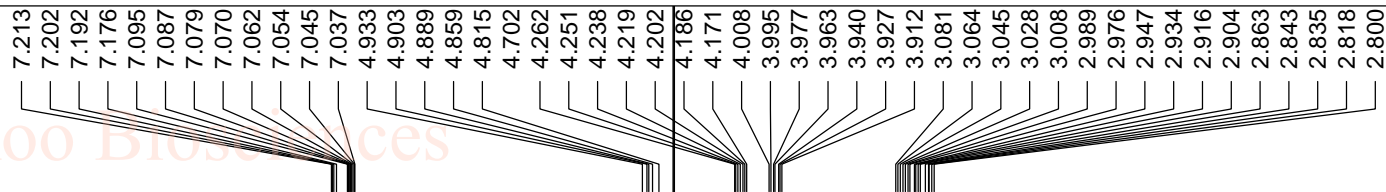


Sitagliptin Phosphate Monohydrate HNMR analysis

Solvent = D2O



MedKoo Cat#: 300146
 Name: Sitagliptin Phosphate Monohydrate
 CAS#: 654671-77-9
 Lot# CRB41209
 Chemical Formula: C₁₆H₂₀F₆N₅O₆P
 Molecular Weight: 523.32

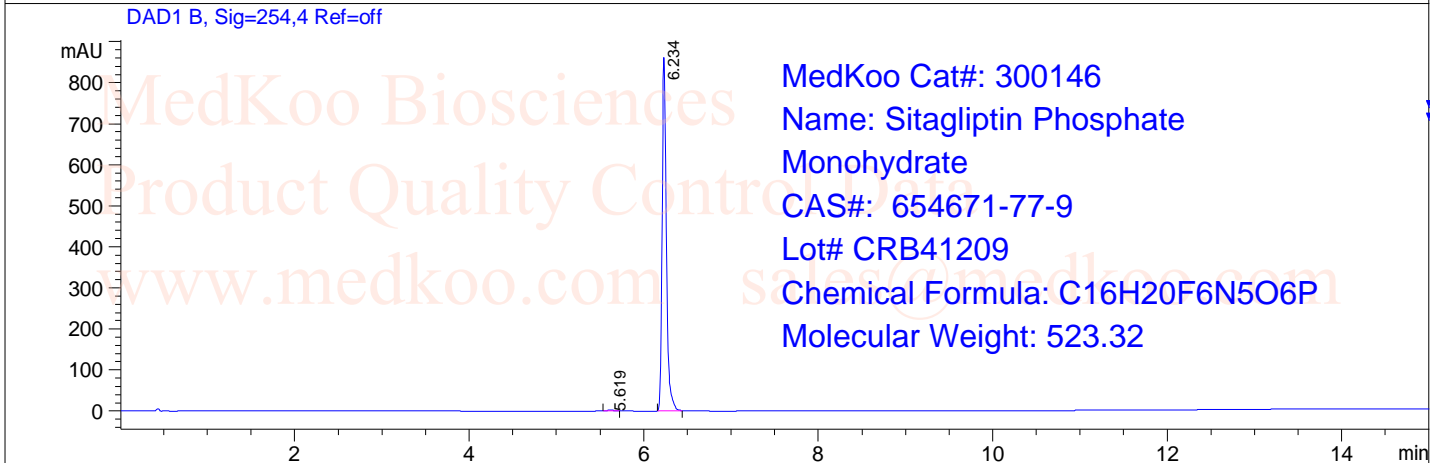
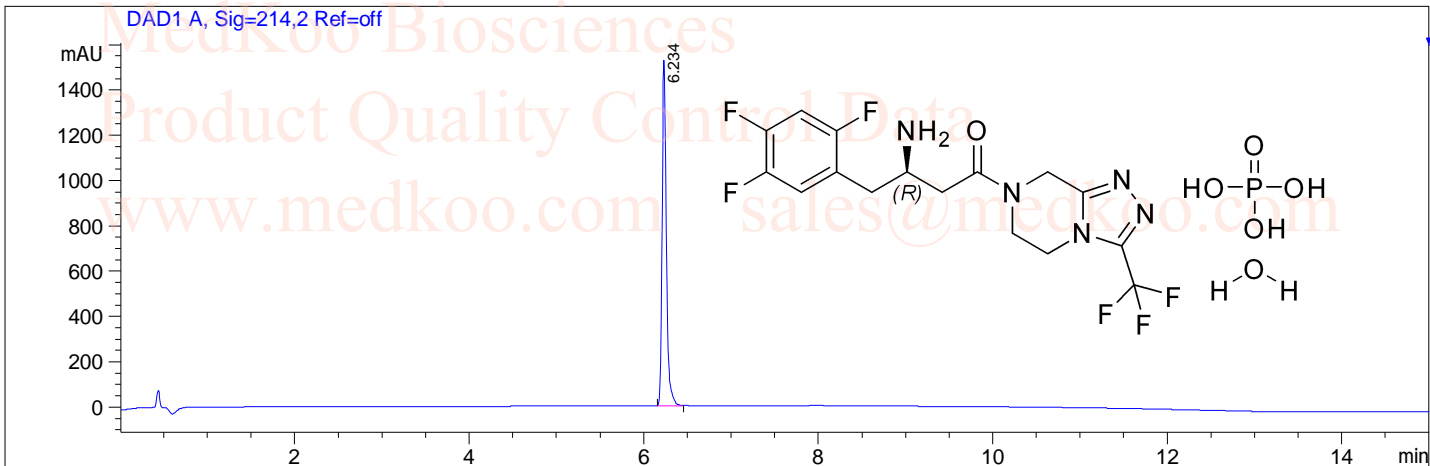


spect, D2O,							
F1: 400.132	F2: 1.000	SW1: 8013		OF1: 2471.0		PTS1d: 65536	
EX: zg30		PW: 14.8 usec	PD: 1.0 sec	NA: 16	LB: 0.0		Nuts - \$pdata

Sitagliptin Phosphate Monohydrate HPLC Analysis

sales@medkoo.com

Sample Name	: 654671-77-9	Seq. Line	: 0
Acq. Operator	: 3	Location	: P2-A-08
Spec. Reported	: Integration	Inj	: 0
		Inj Volume	: 5.2 ul



Integration Results for DAD1 A, Sig=214,2 Ref=off

RetTim	Width	Area	Height	Area%
6.23	0.05	5240.47	1527.57	100.00

Integration Results for DAD1 B, Sig=254,4 Ref=off

RetTim	Width	Area	Height	Area%
5.62	0.10	8.43	1.42	0.28
6.23	0.05	2991.95	862.83	99.72

www.medkoo.com sales@medkoo.com

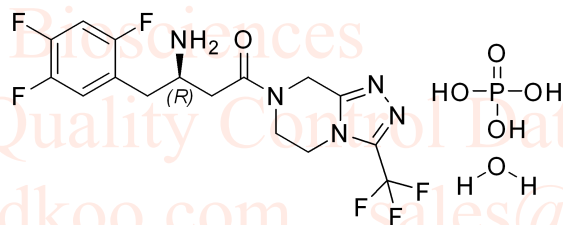
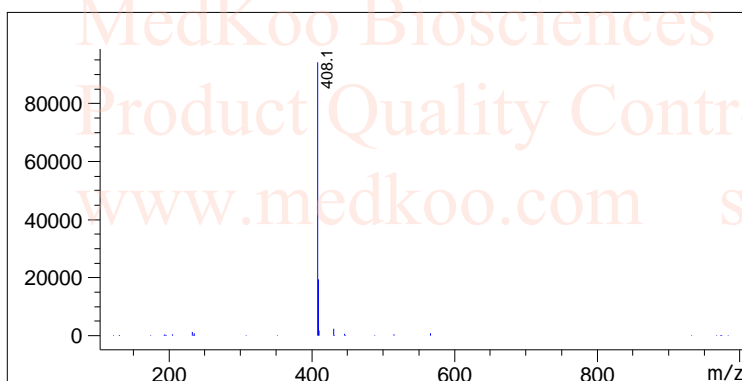
www.medkoo.com

MedKoo Biosciences

Sitagliptin Phosphate Monohydrate

MS analysis

Sample Name	: AZ	Seq. Line	: 0
Acq. Operator	: 8	Location	: P2-D-07
Spec. Reported	: MS	Inj	: 0



MedKoo Cat#: 300146
Name: Sitagliptin Phosphate Monohydrate
CAS#: 654671-77-9
Lot# CRB41209
Chemical Formula: C₁₆H₂₀F₆N₅O₆P
Molecular Weight: 523.32

Sitagliptin (free base)
Chemical Formula: C₁₆H₁₅F₆N₅O
Exact Mass: 407.11808
Molecular Weight: 407.31