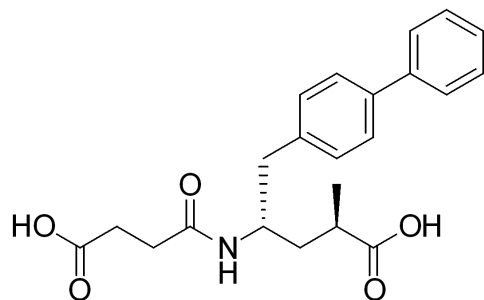
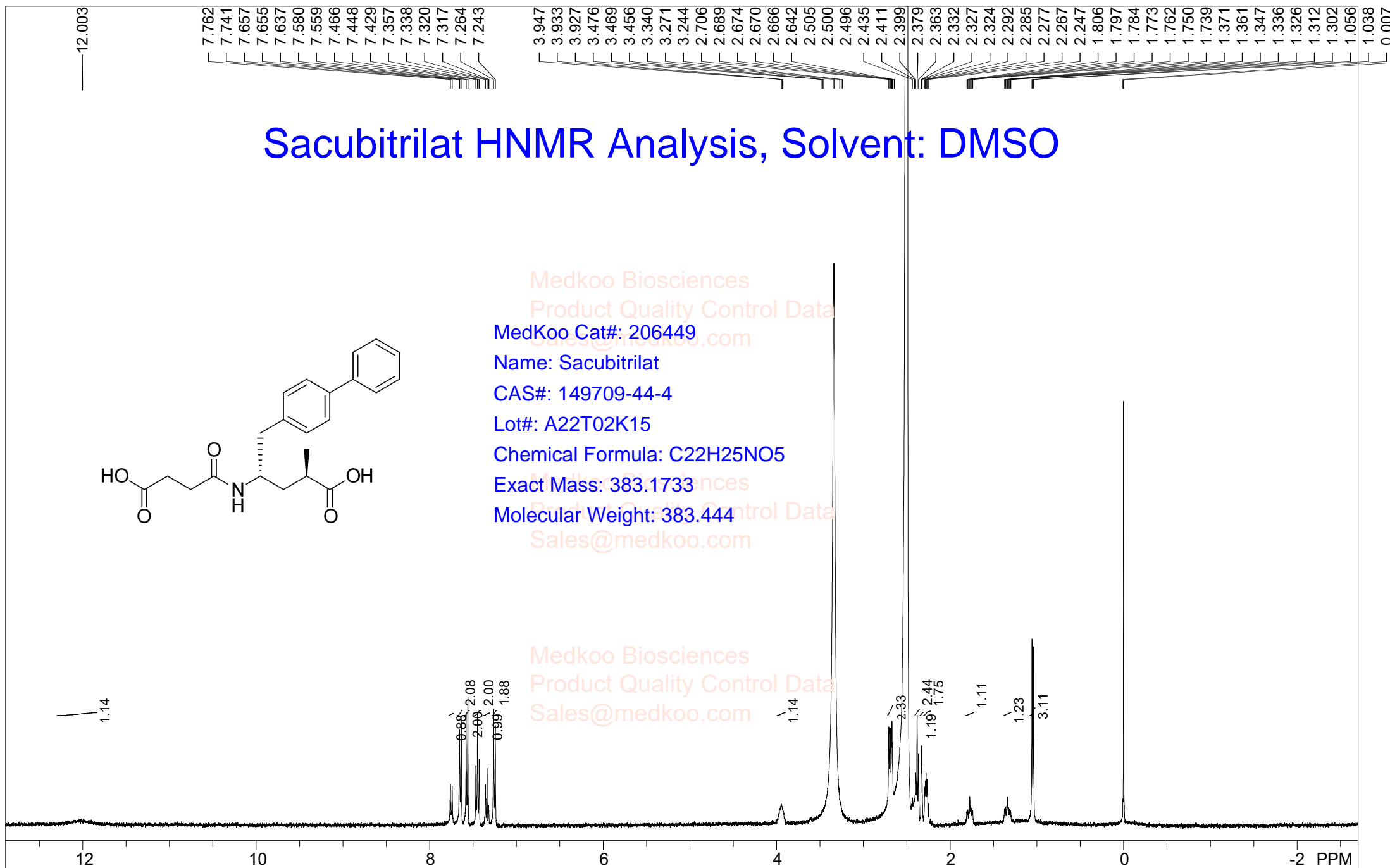


# Sacubitrilat HNMR Analysis, Solvent: DMSO



Medkoo Biosciences  
Product Quality Control Data  
Sales@medkoo.com  
Medkoo Cat#: 206449  
Name: Sacubitrilat  
CAS#: 149709-44-4  
Lot#: A22T02K15  
Chemical Formula: C<sub>22</sub>H<sub>25</sub>NO<sub>5</sub>  
Exact Mass: 383.1733  
Molecular Weight: 383.444  
Medkoo Biosciences  
Product Quality Control Data  
Sales@medkoo.com

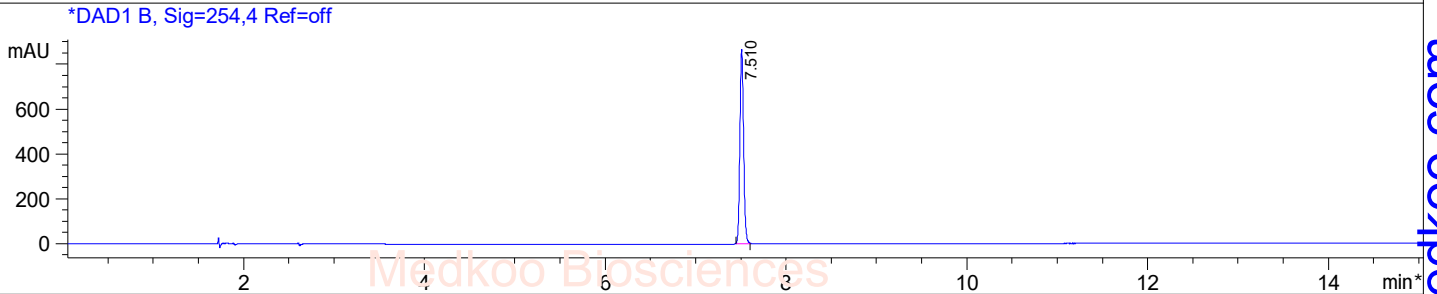
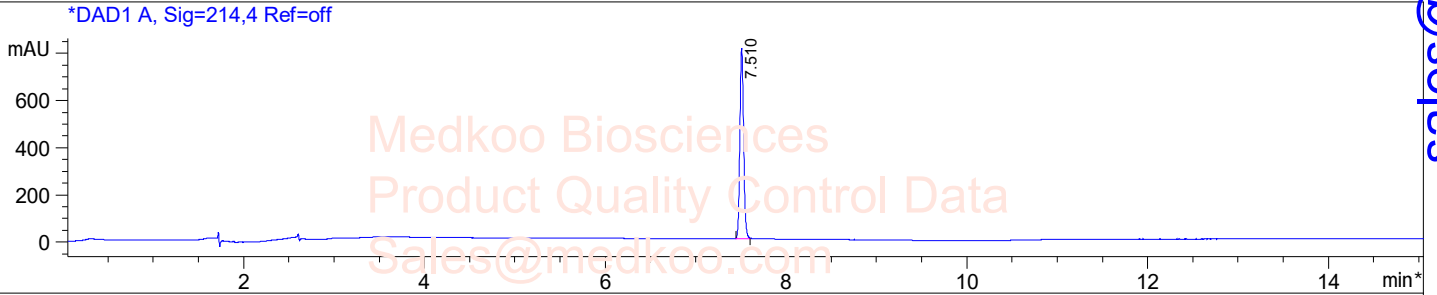


F1: 400.230	F2: 1.000	SW1: 8224	OF1: 2472.5	PTS1d: 32768
EX: zg30	MedKoo Biosciences	PD: www.medkoo.com	LB: 0.3	sales@medkoo.com

# Sacubitrilat HPLC Analysis

Sample Name : 149709-44-4

Method Info : Column: SUNFire C18 (4.6x 150 mm, 3.5um)  
Mobile phase: H2O(0.01%TFA) (A) / ACN(0.01%TFA) (B)  
Elution program: Gradient from 5 to 95% of B in 8min at 1ml/min  
Temperature: 45 °C  
Detection: UV (214 , 4 nm) and MS (ESI, Pos mode ,100 to 1500 amu)

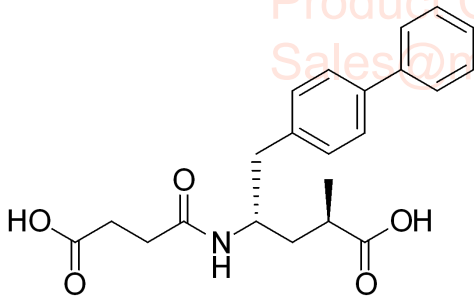


Integration Results for DAD1 A, Sig=214,4 Ref=off

RetTim	Width	Area	Height	Area%
7.51	0.04	2325.99	809.28	100.00

Integration Results for DAD1 B, Sig=254,4 Ref=off

RetTim	Width	Area	Height	Area%
7.51	0.04	2467.35	868.94	100.00



MedKoo Cat#: 206449

Name: Sacubitrilat

CAS#: 149709-44-4

Lot#: A22T02K15

Chemical Formula: C<sub>22</sub>H<sub>25</sub>NO<sub>5</sub>

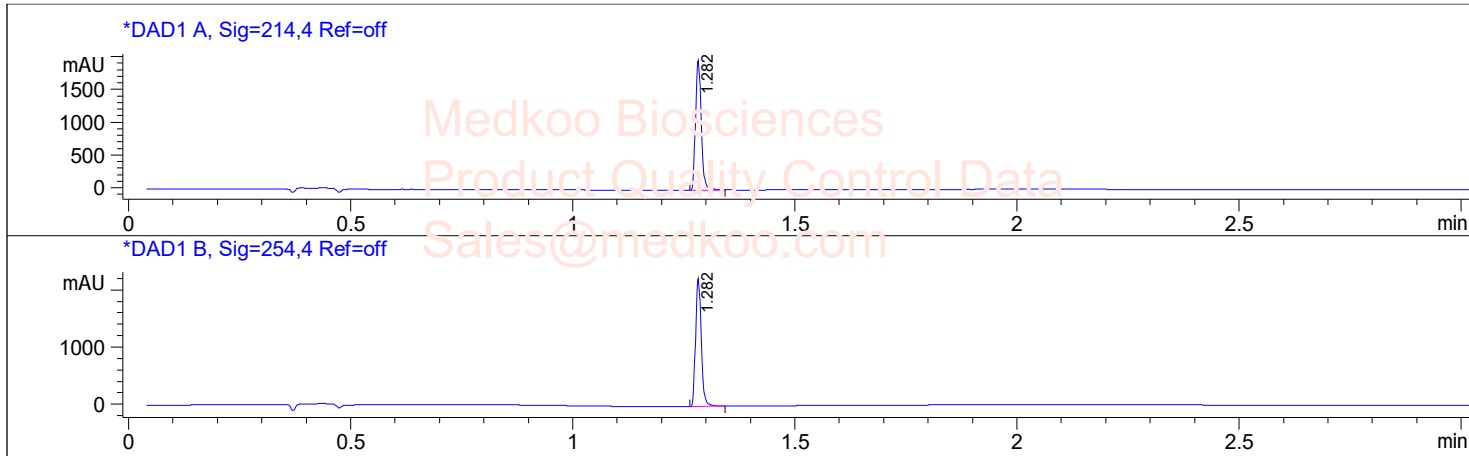
Exact Mass: 383.1733

Molecular Weight: 383.444

# Sacubitrilat LC/MS Analysis

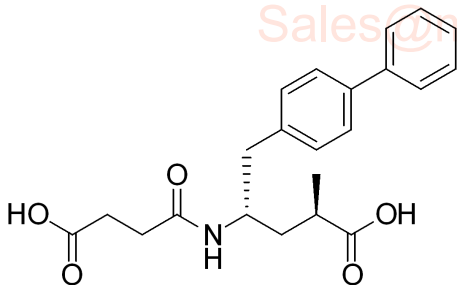
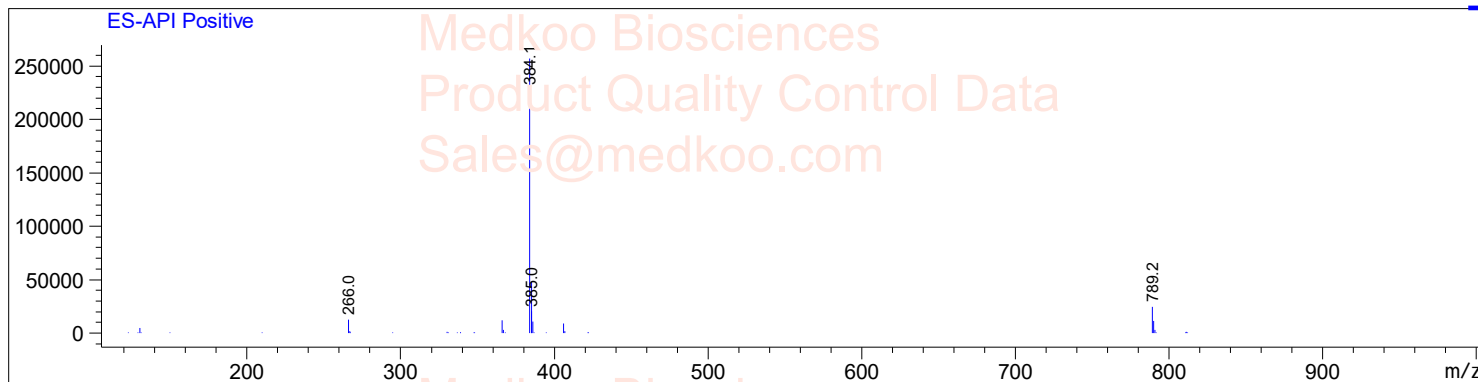
Sample Name : 149709-44-4

Method Info : Mobile Phase: A:Water(10mM NH<sub>4</sub>HCO<sub>3</sub>) B:ACN  
Gradient: 5%B increase to 95%B within 1.3min,95%B for 1.7min  
Flow Rate: 1.8 ml/min  
Column:Xbridge C18,3.5um,4.6\*50mm  
Column Temperature:45C  
Detection:UV(214,4nm) and MS(ESI,Pos mode,110 to 1000 amu)



Ret. Time: 1.27

<<<< POSITIVE SPECTRA >>>>



MedKoo Cat#: 206449

Name: Sacubitrilat

CAS#: 149709-44-4

Lot#: A22T02K15

Chemical Formula: C<sub>22</sub>H<sub>25</sub>NO<sub>5</sub>

Exact Mass: 383.1733

Molecular Weight: 383.444

sales@medkoo.com

www.medkoo.com

MedKoo Biosciences