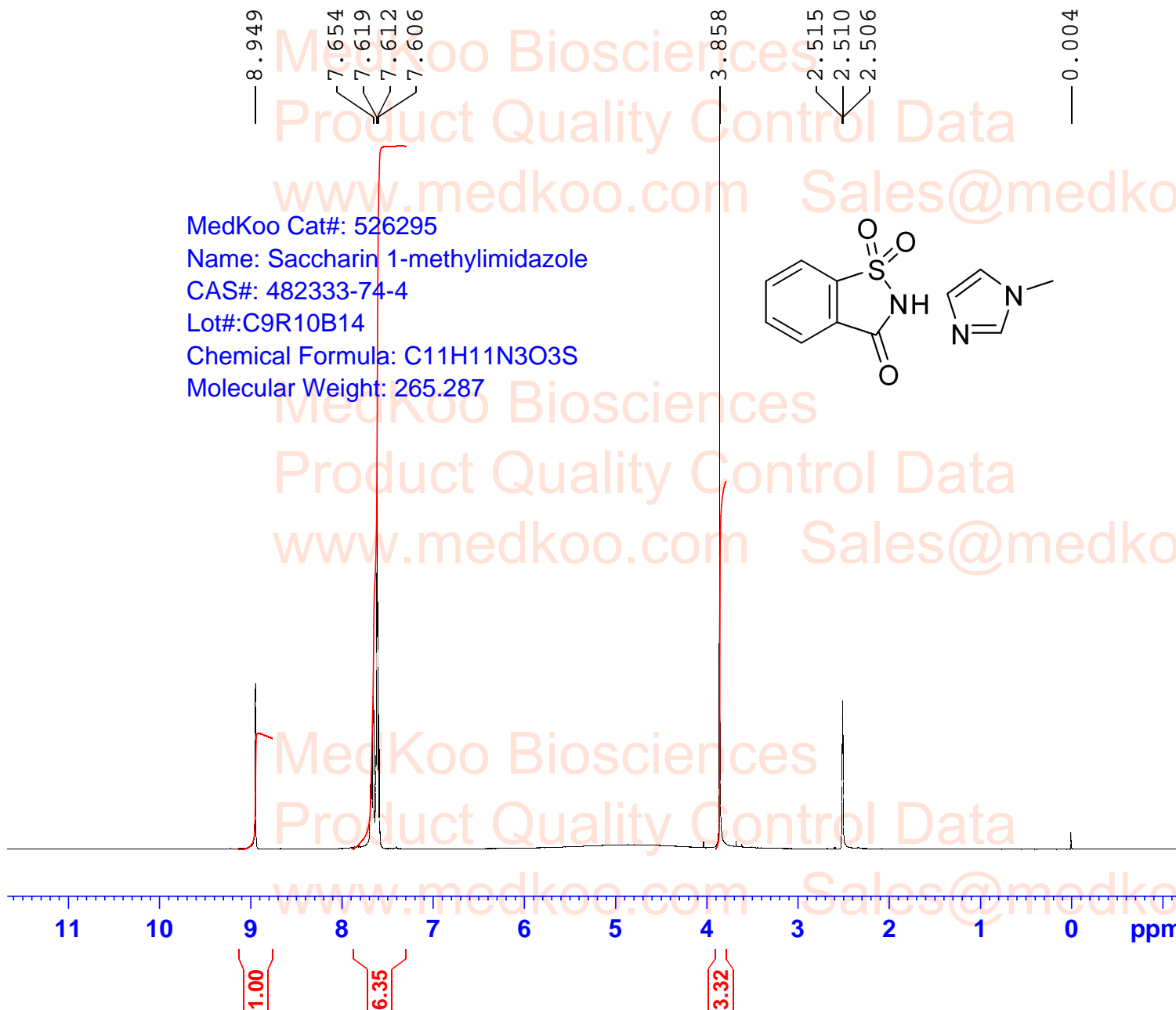


Saccharin 1-methylimidazole HNMR Analysis, Solvent:DMSO



MedKoo Cat#: 526295
Name: Saccharin 1-methylimidazole
CAS#: 482333-74-4
Lot#:C9R10B14
Chemical Formula: C11H11N3O3S
Molecular Weight: 265.287



Current Data Parameters
NAME 482333-74-4
EXPNO 1
PROCNO 1

F2 - Acquisition Parameters

Time 12.13
INSTRUM spect
PROBHD 5 mm PADUL 13C
PULPROG zg30
TD 65536
SOLVENT DMSO
NS 16
DS 2
SWH 8012.820 Hz
FIDRES 0.122266 Hz
AQ 4.0894465 sec
RG 158.27
DW 62.400 usec
DE 6.50 usec
TE 0 K
D1 1.00000000 sec
TD0 1

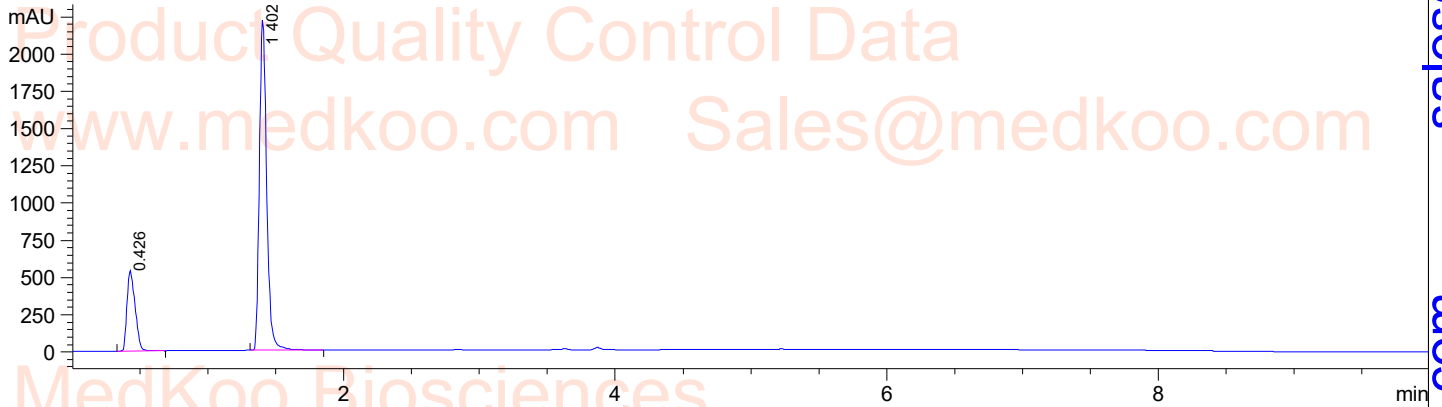
==== CHANNEL f1 =====
SFO1 400.1324710 MHz
NUC1 1H
P1 10.00 usec
PLW1 20.00000000 W

F2 - Processing parameters
SI 65536
SF 400.1300000 MHz
WDW EM
SSB 0
LB 0.30 Hz
GB 0
PC 1.00

Saccharin 1-methylimidazole LC/MS Analysis

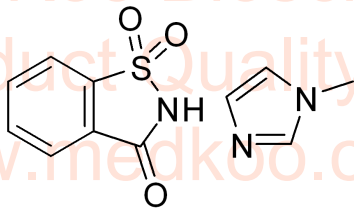
Sample Name : 482333 Tgt Mass(EZX) :
Acq. Operator : 1 Location : P1-F-03
Spec. Reported : Integration Inj : 0
Inj Volume : 1 ul

MedKoo Biosciences



Integration Results for DAD1 A, Sig=214,4 Ref=off

RetTim	Width	Area	Height	Area%
0.43	0.06	2258.05	544.19	21.35
1.40	0.06	8317.84	2222.86	78.65



MedKoo Cat#: 526295

Name: Saccharin 1-methylimidazole

CAS#: 482333-74-4

Lot#: C9R10B14

Chemical Formula: C₁₁H₁₁N₃O₃S

Molecular Weight: 265.287

sales@medkoo.com

www.medkoo.com

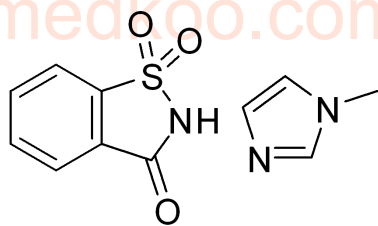
MedKoo Biosciences

Saccharin 1-methylimidazole LC/MS Analysis

Ret. Time: 0.428 <<<< POSITIVE SPECTRA >>>>



Ret. Time: 1.402



MedKoo Cat#: 526295

Name: Saccharin 1-methylimidazole

CAS#: 482333-74-4

Lot#: C9R10B14

Chemical Formula: C₁₁H₁₁N₃O₃S

Molecular Weight: 265.287