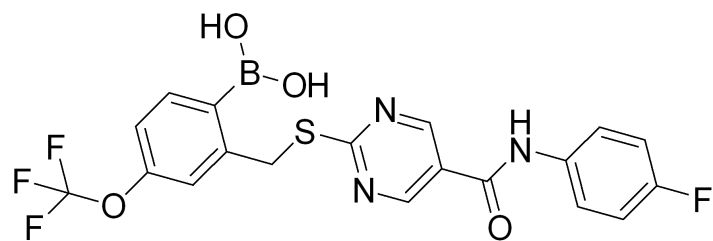


SX-682 HNMR Analysis, Solvent: DMSO



Medkoo Biosciences
Product Quality Control Data
Sales@medkoo.com

MedKoo Cat#: 206806

Name: SX-682

CAS#: 1648843-04-2

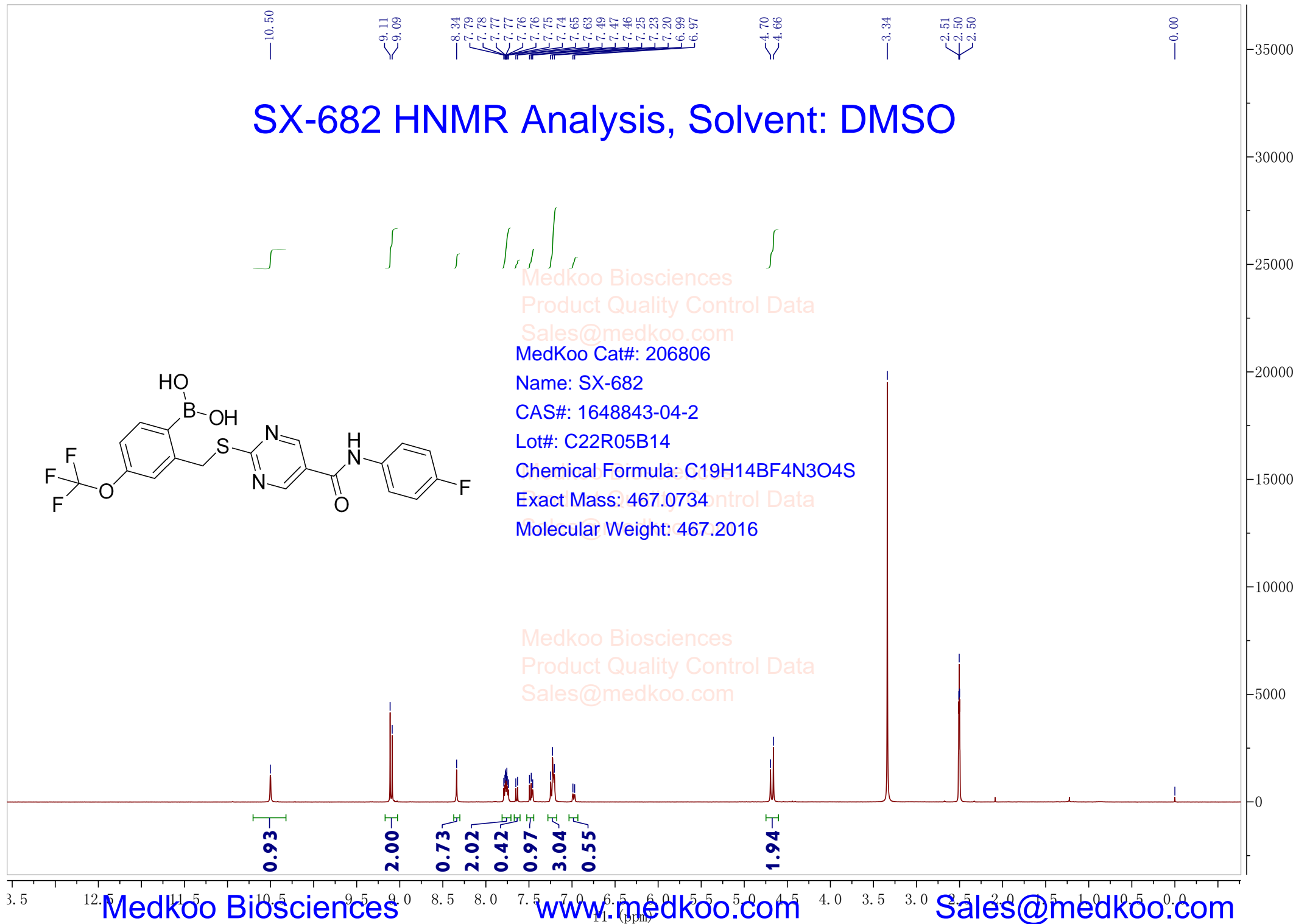
Lot#: C22R05B14

Chemical Formula: C₁₉H₁₄BF₄N₃O₄S

Exact Mass: 467.0734

Molecular Weight: 467.2016

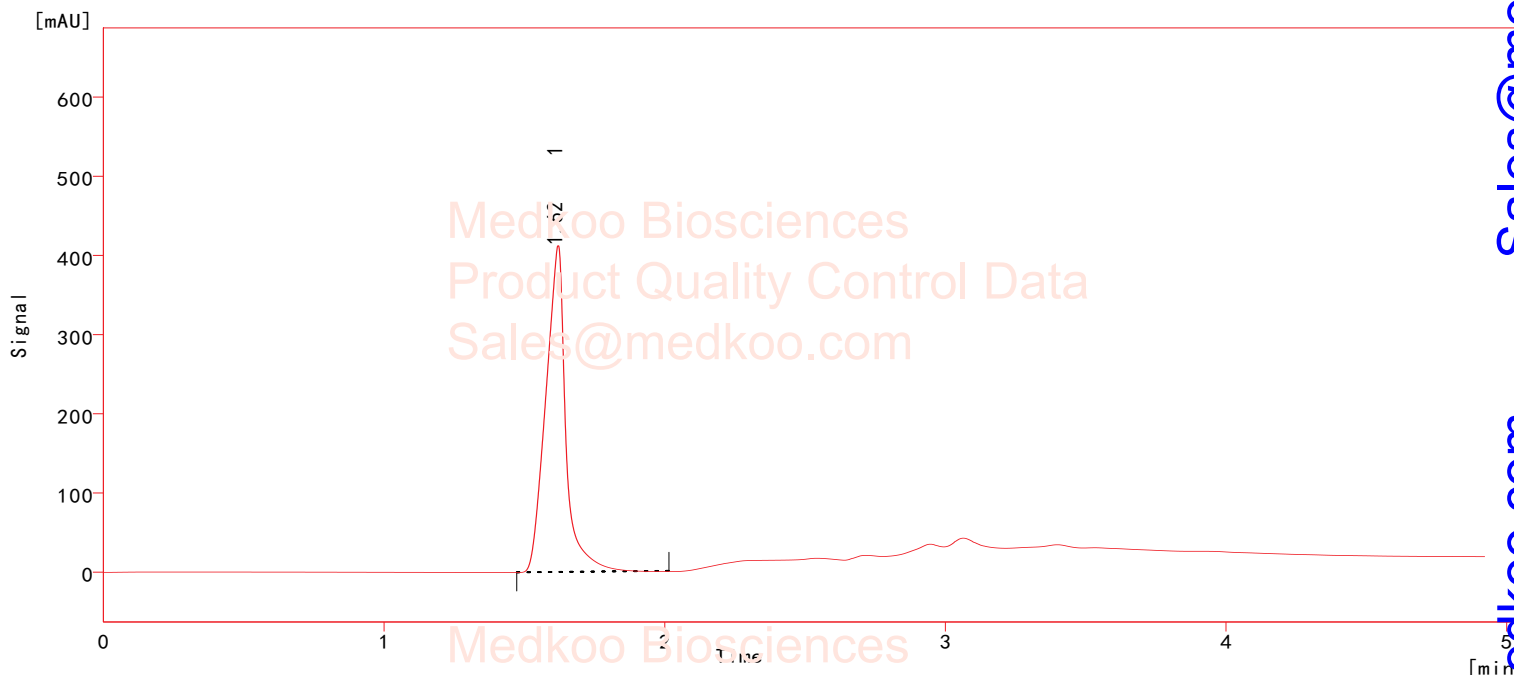
Medkoo Biosciences
Product Quality Control Data
Sales@medkoo.com



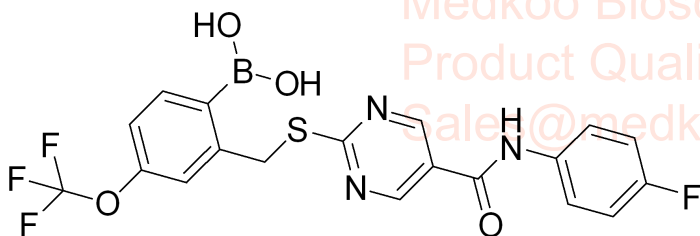
SX-682 HPLC Analysis

Chromatogram Information:

File Name : D:\CZC\6.PRM
Project : D:\W3200\DataFiles\Projects\Work1.PRJ
Method : 99B1



	Ret. Time [min]	Area [mAU. s]	height [mAU]	Area [%]	Height [%]
1	1.62	3121.863	624.493	100.0	100.0
Total		3121.863	624.493	100.0	100.0



MedKoo Cat#: 206806

Name: SX-682

CAS#: 1648843-04-2

Lot#: C22R05B14

Chemical Formula: C₁₉H₁₄BF₄N₃O₄S

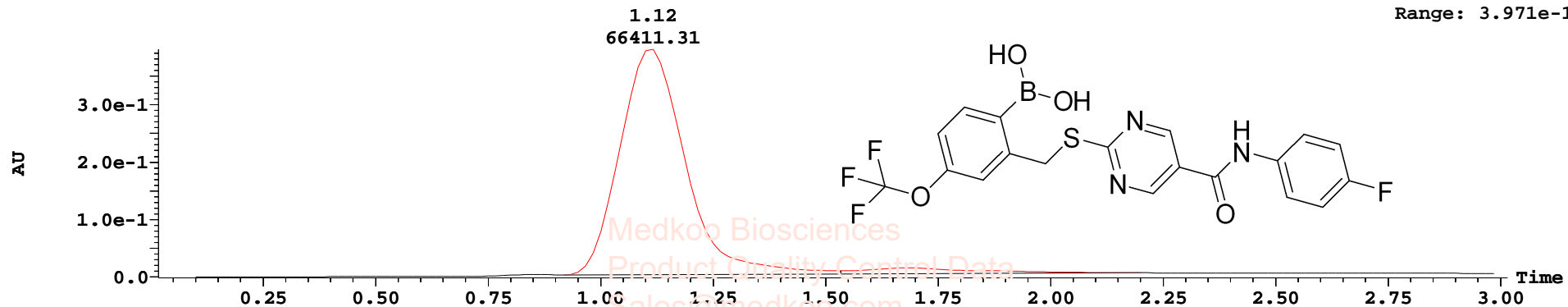
Exact Mass: 467.0734

Molecular Weight: 467.2016

SX-682 LC/MS Analysis

UV Detector: 254 0.0000-3.0000: Smooth (Mn, 2x3)

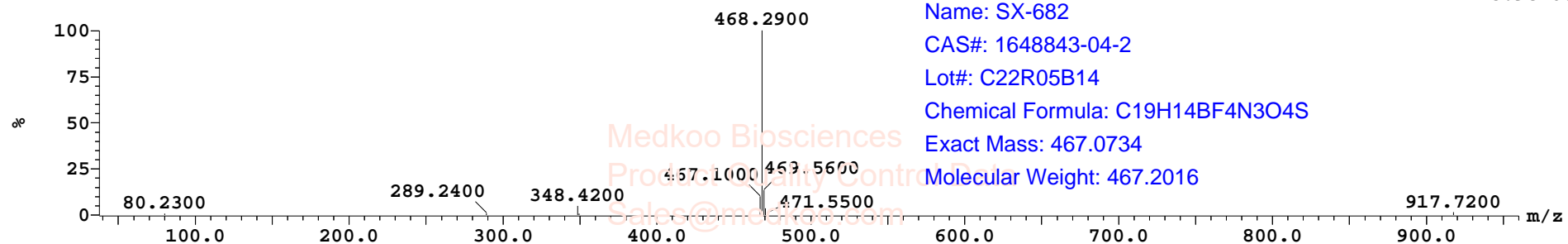
3.969e-1
Range: 3.971e-1



Time: 1.12, Combine (29:32-(25:26+36))

MedKoo Cat#: 206806

1:MS ES+
5.9e+007



Time: 1.12, Combine (29:32-(25+35:36))

2:MS ES-
1.1e+006

