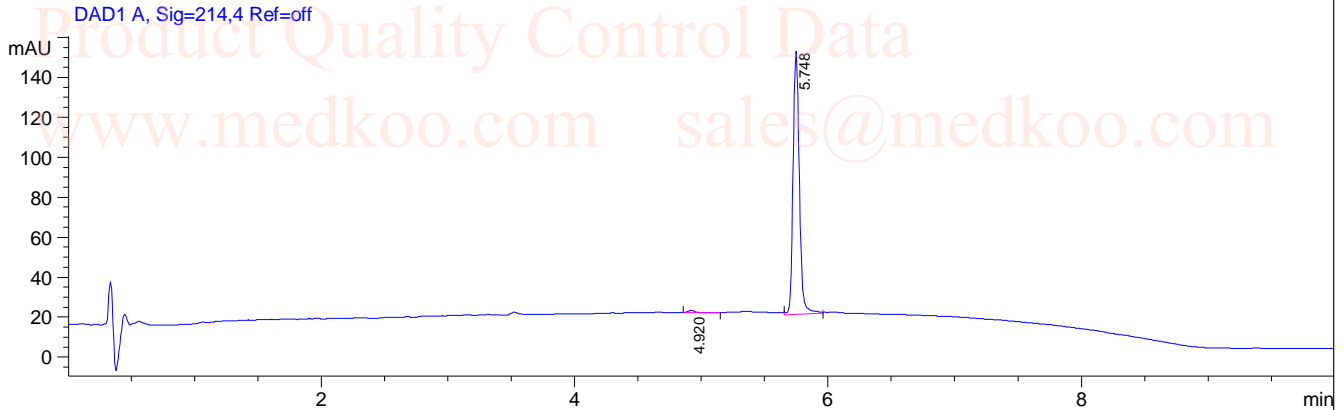


# SMI-16a HPLC Analysis

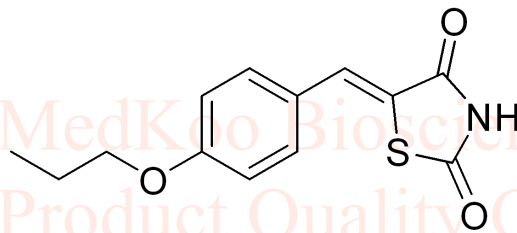
Sample Name : SMI  
Acq. Operator : 1  
Spec. Reported : Integration  
Location : P1-D-04  
Inj : 0  
Inj Volume : 1 ul

MedKoo Biosciences



Integration Results for DAD1 A, Sig=214,4 Ref=off

RetTim	Width	Area	Height	Area%
4.92	0.05	4.02	1.22	0.83
5.75	0.06	477.90	133.48	99.17

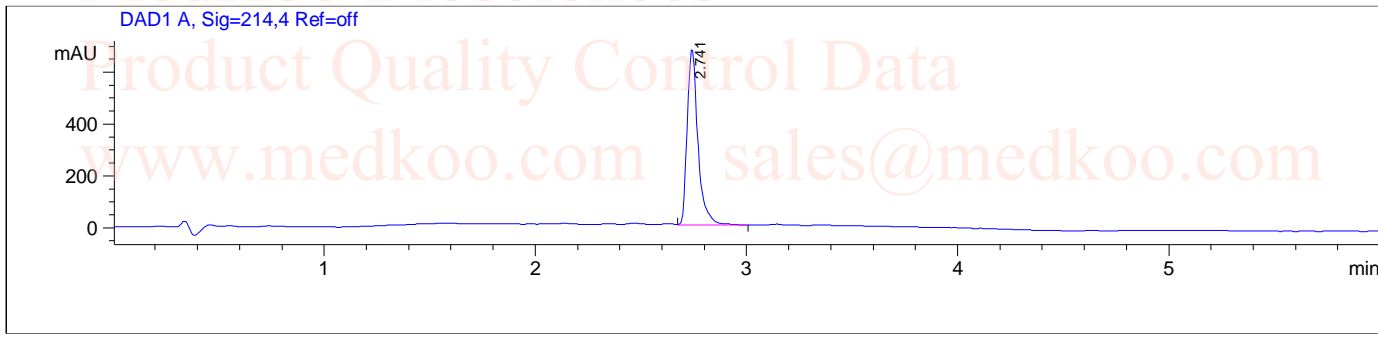


MedKoo Cat#: 562422  
Name: SMI-16a  
CAS#: 587852-28-6  
Lot#: C9R10B31  
Chemical Formula: C13H13NO3S  
Exact Mass: 263.0616  
Molecular Weight: 263.31

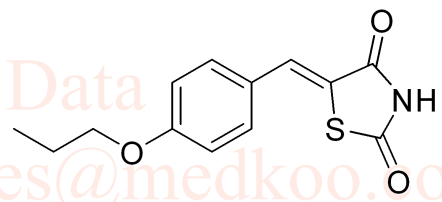
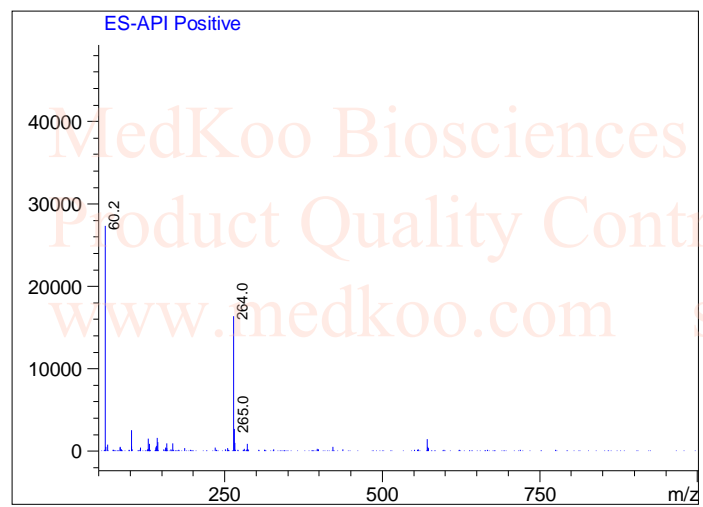
www.medkoo.com sales@medkoo.com

# SMI-16a LC/MS Analysis

Sample Name : SMI	Tgt Mass(EZX) :
Acq. Operator : 8	Location : P1-F-07
Spec. Reported : MS Integration	Inj : 1
	Inj Volume : 9 ul



Ret. Time: 2.79 <<<< POSITIVE SPECTRA >>>>



MedKoo Cat#: 562422  
Name: SMI-16a  
CAS#: 587852-28-6  
Lot#: C9R10B31  
Chemical Formula: C<sub>13</sub>H<sub>13</sub>NO<sub>3</sub>S  
Exact Mass: 263.0616  
Molecular Weight: 263.31

sales@medkoo.com

www.medkoo.com

MedKoo Biosciences