

9.111

7.366
7.347
7.327
7.263
7.158
7.139
7.104
7.084

3.654
3.635
3.617
3.598

2.415

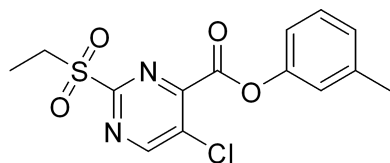
1.596
1.505
1.487
1.468

-0.000

SBI-115 HNMR Analysis, Solvent: CDCl3

MedKoo Biosciences
Product Quality Control Data

www.medkoo.com sales@medkoo.com



MedKoo Cat#: 555569

Name: SBI-115

CAS#: 882366-16-7

Lot#: T9D08P28

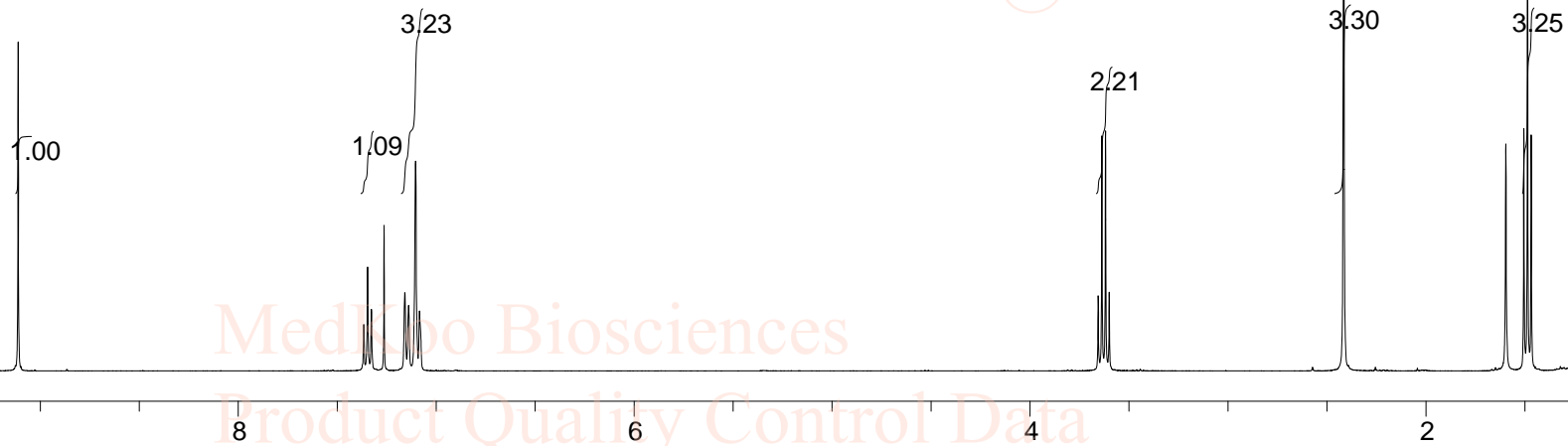
Chemical Formula: C14H13ClN2O4S

Exact Mass: 340.0285

Molecular Weight: 340.78

MedKoo Biosciences
Product Quality Control Data

www.medkoo.com sales@medkoo.com



MedKoo Biosciences
Product Quality Control Data

spect, CDCl3,

F1: 400.132 F2: 1.000

SW1: 8224

OF1: 2462.4

PTS1d: 65536

EX: zg30 PW: 15.0 usec

PD: 1.0 usec

NU: 8

LB: 0.0

NUM: \$pdata

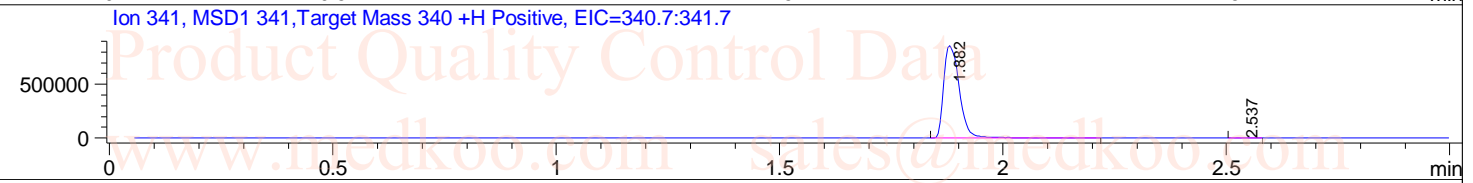
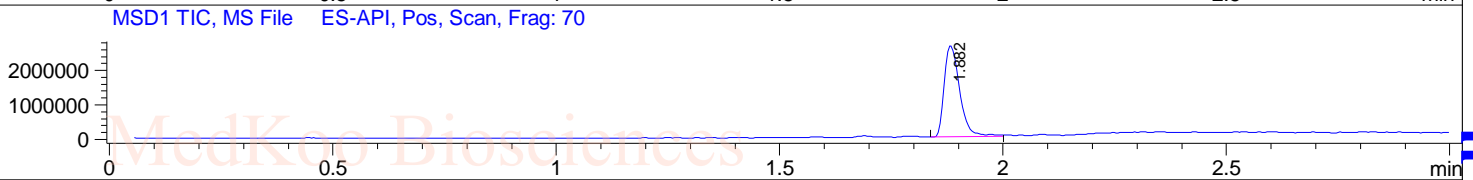
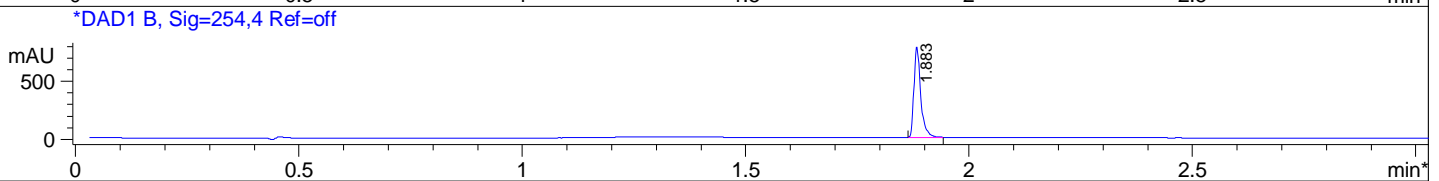
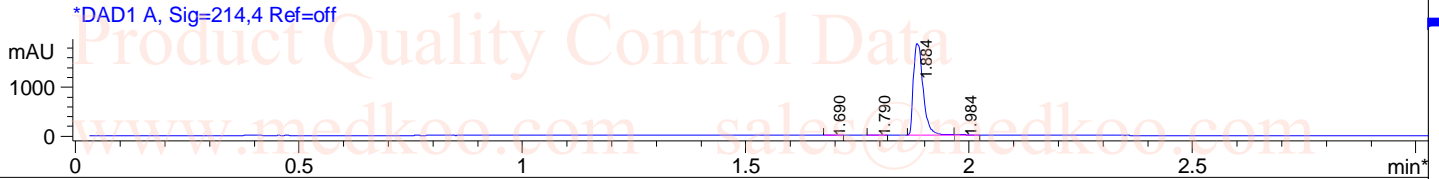
MedKoo Biosciences

www.medkoo.com

sales@medkoo.com

SBI-115 LC/MS Analysis Report

Sample Name : SBI-115 **Tgt Mass(EZX)** : 340.00
Acq. Operator : MONITOR **Location** : P2-B-03
Spec. Reported : MS Integration **Inj** : 1
Acq. Method : D:\METHODS\1-POS-3MIN.M **Inj Volume** : 3 ul
Analysis Method : D:\METHODS\1-POS-3MIN.M
Sample Info : Easy-Access Method: '1-POS-3MIN' 340.00
Method Info : Mobile Phase: A: water(0.01%TFA) B: ACN(0.01%TFA)
Gradient: 5%-95% B in 1.3min
Flow Rate: 1.8ml/min
Column: Sunfire C18 50*4.6mm, 3.5um
Oven Temperature: 45C
UV214, MASS103-1000



Integration Results for DAD1 A, Sig=214,4 Ref=off

RetTim	Width	Area	Height	Area%
1.69	0.02	8.51	6.05	0.30
1.79	0.02	6.35	5.82	0.22
1.88	0.02	2828.75	1876.76	98.89
1.98	0.02	16.83	10.07	0.59

MedKoo Cat#: 555569

Name: SBI-115

CAS#: 882366-16-7

Lot#: T9D08P28

Chemical Formula: C14H13ClN2O4S

Exact Mass: 340.0285

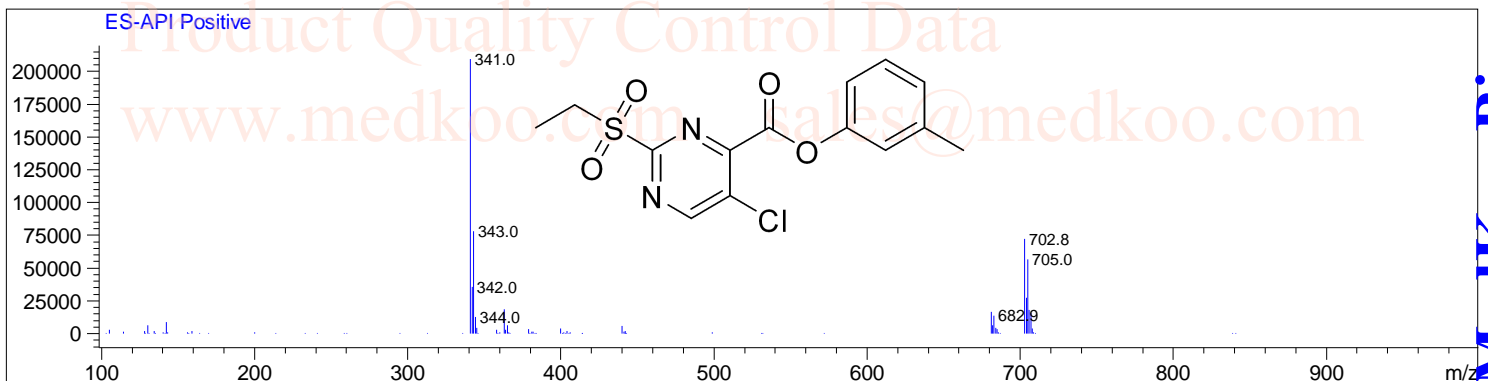
Molecular Weight: 340.78

Integration Results for DAD1 B, Sig=254,4 Ref=off

RetTim	Width	Area	Height	Area%
1.88	0.02	828.87	785.72	100.00

Ret. Time: 1.88

<<<< POSITIVE SPECTRA >>>>



www.medkoo.com sales@medkoo.com MedKoo Biosciences