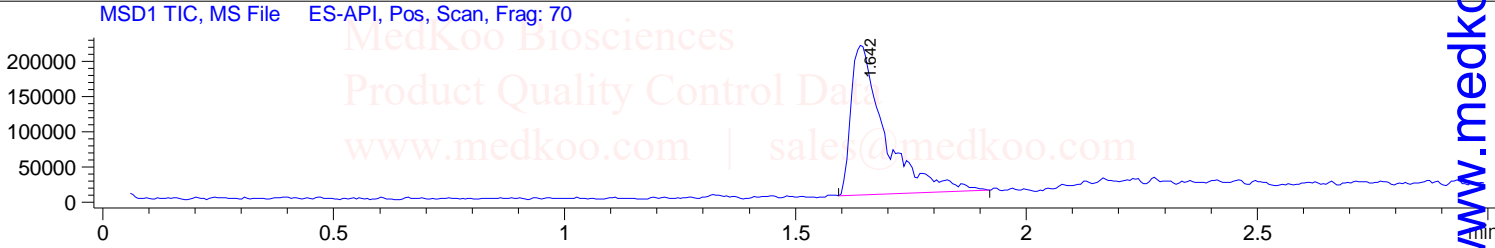
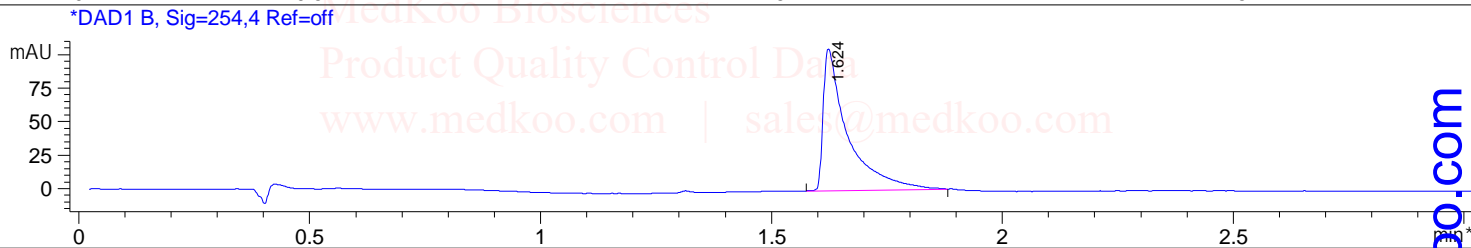
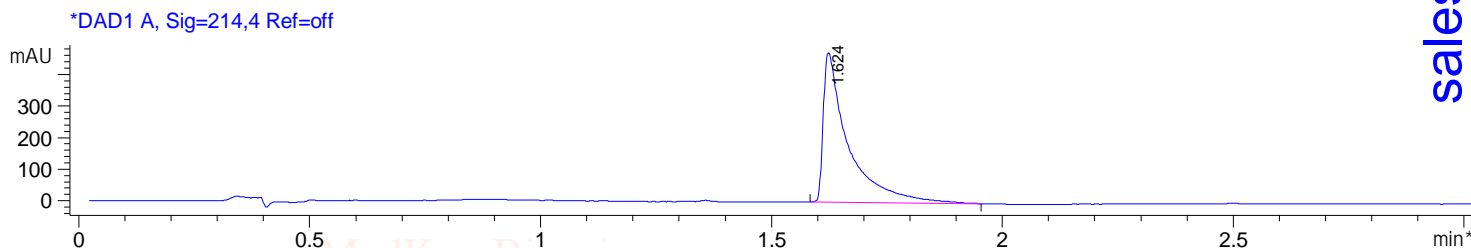


S63845 LC/MS Analysis Report

Sample Name : 1799633-27-4
Acq. Method : D:\METHODS\1-POS-3MIN.M
Analysis Method : D:\METHODS\1-POS-3MIN.M
Sample Info : Easy-Access Method: '1-POS-3MIN'
Method Info : Mobile Phase: A: water(0.01%TFA) B: ACN(0.01%TFA)
 Gradient: 5% increase to 95%B within 1.3 min, 95%B for 1.7 min.
 Flow Rate: 2.0ml/min
 Column: Sunfire C18, 4.6*50mm, 3.5um
 Column Temperature: 45 C
 Detection: UV(214,4nm) and MS(ESI, Pos mode, 110 to 1000 amu)

sales@medkoo.com

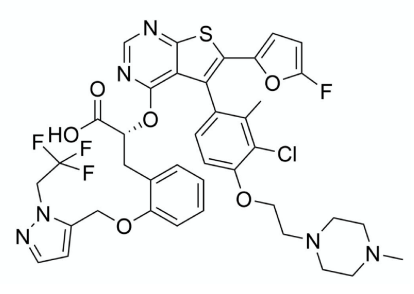


Integration Results for DAD1 A, Sig=214,4 Ref=off

RetTim	Width	Area	Height	Area%
1.62	0.05	1783.40	474.17	100.00

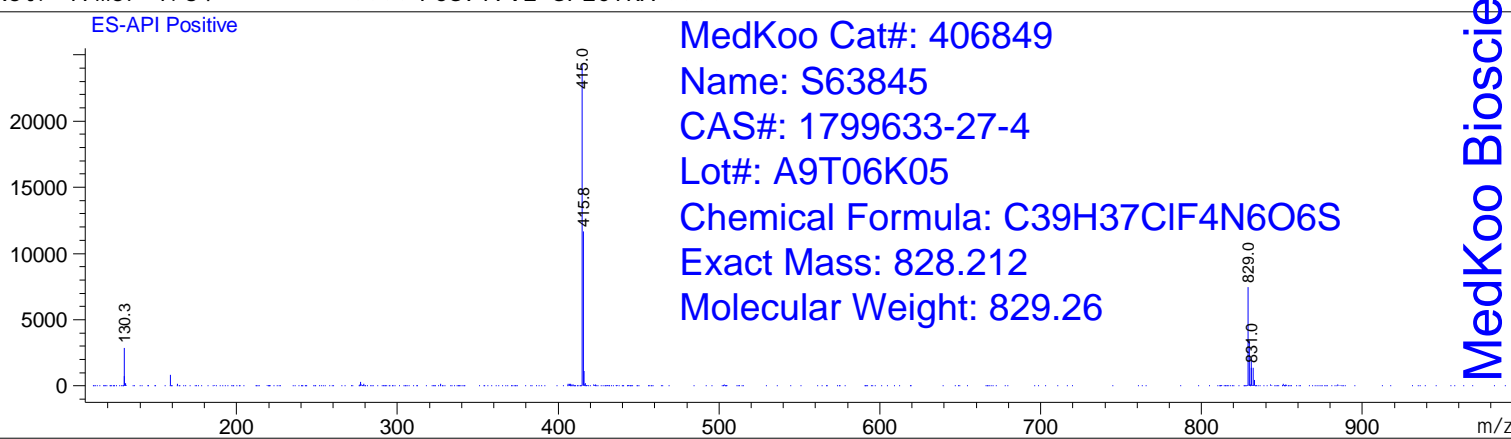
Integration Results for DAD1 B, Sig=254,4 Ref=off

RetTim	Width	Area	Height	Area%
1.62	0.05	387.86	105.80	100.00



www.medkoo.com

Ret. Time: 1.64 <<<< POSITIVE SPECTRA >>>>



MedKoo Cat#: 406849
Name: S63845
CAS#: 1799633-27-4
Lot#: A9T06K05
Chemical Formula: C39H37ClF4N6O6S
Exact Mass: 828.212
Molecular Weight: 829.26

MedKoo Biosciences