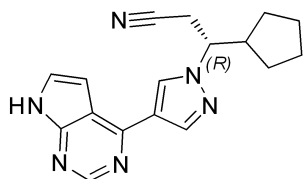
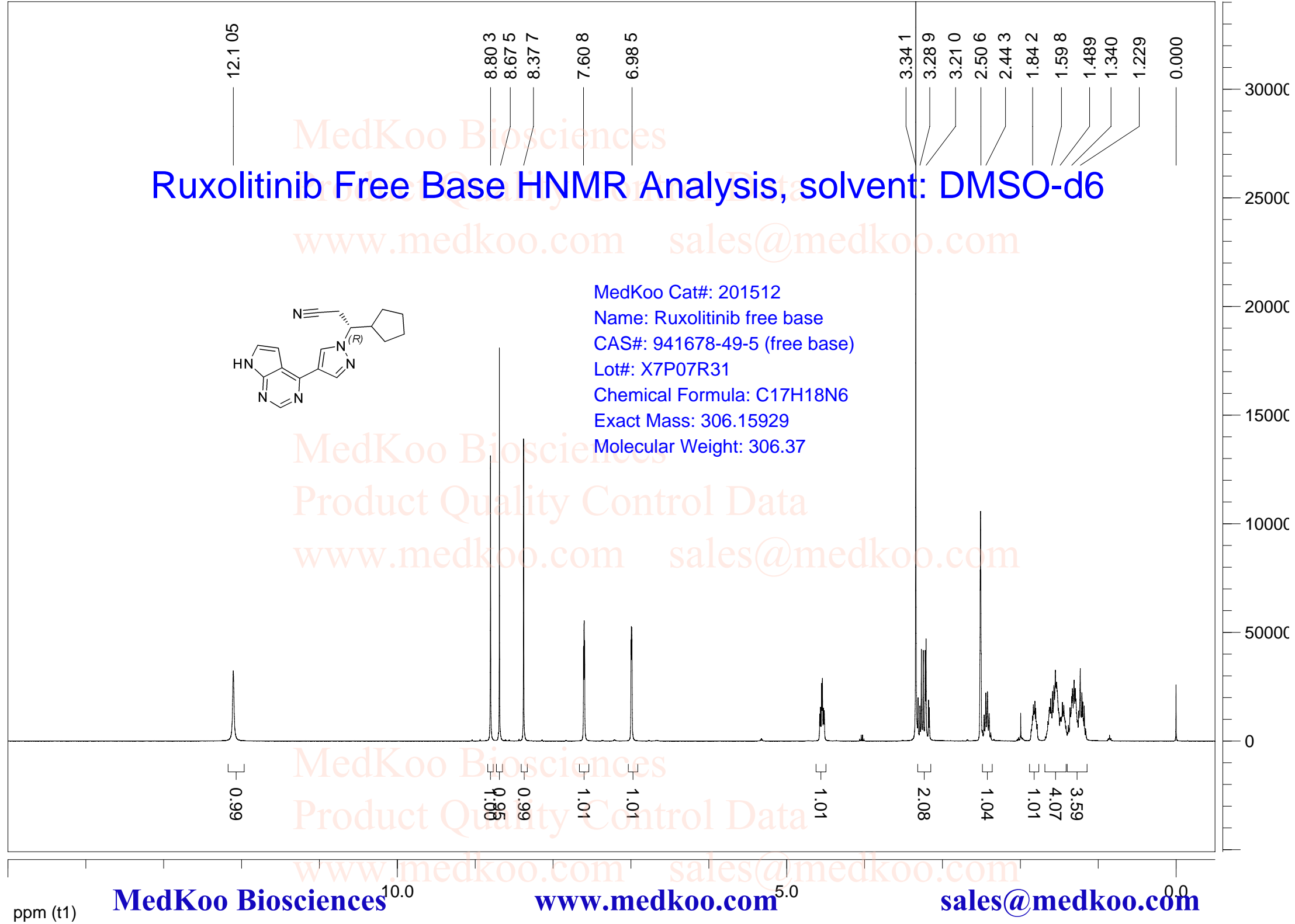


Ruxolitinib Free Base HNMR Analysis, solvent: DMSO-d6

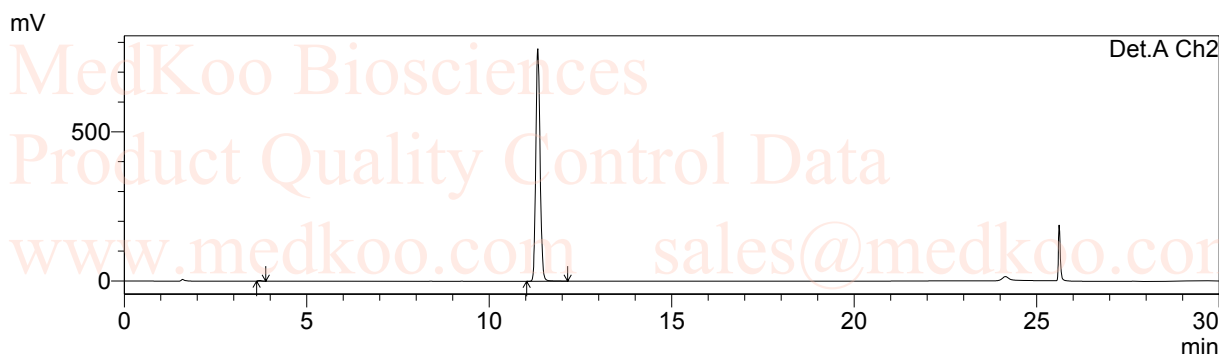
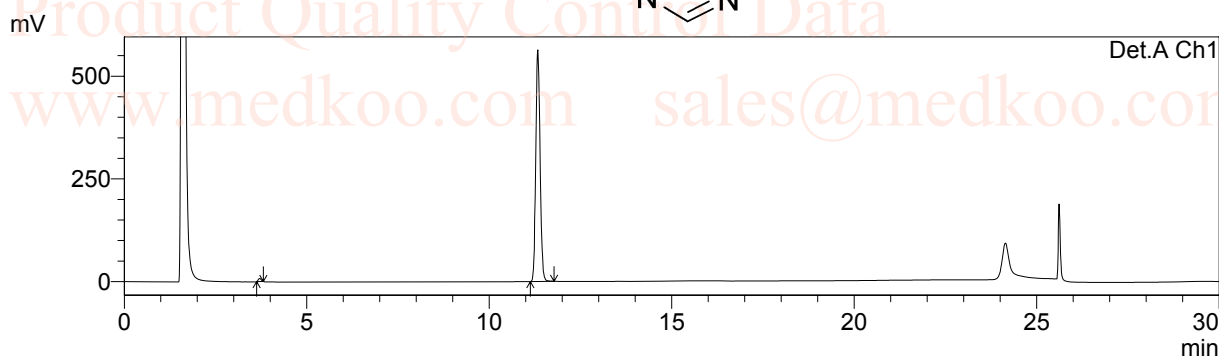
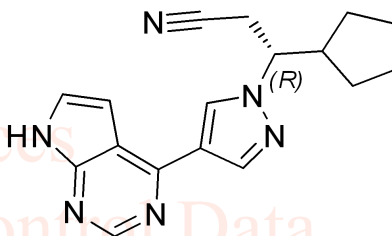


MedKoo Cat#: 201512
Name: Ruxolitinib free base
CAS#: 941678-49-5 (free base)
Lot#: X7P07R31
Chemical Formula: C17H18N6
Exact Mass: 306.15929
Molecular Weight: 306.37



Ruxolitinib Free Base HPLC Analysis

Column : Inertil ODS-3, 5um 4.6*150mm
 Mobile phase : Solvent A: H2O(0.05%H3PO4) Solvent B:ACN(0.05%H3PO4)
 Temperature : 40 °C
 Flow rate : 1mL/min
 Run time : 3min gradient(50%B), 15min gradient (50%-95%B),5 min(95%B),then 7min @(50%B)
 Detector : UV
 Wavelength : 220/254 nm
 User name : ZJB E-005
 Notebook page :
 Sample description : in ACN
 Injection Volume : 0.6 uL



1 Det.A Ch1/220nm
 2 Det.A Ch2/254nm

PeakTable

Detector A Ch1 220nm

Peak#	Ret. Time	Area	Area %	Theoretical Plate#
1	3.704	42002	0.900	7954.535
2	11.327	4626480	99.100	40378.538
Total		4668481	100.000	

MedKoo Cat#: 201512

Name: Ruxolitinib free base

CAS#: 941678-49-5 (free base)

Lot#: X7P07R31

Chemical Formula: C17H18N6

Exact Mass: 306.15929

Molecular Weight: 306.37

PeakTable

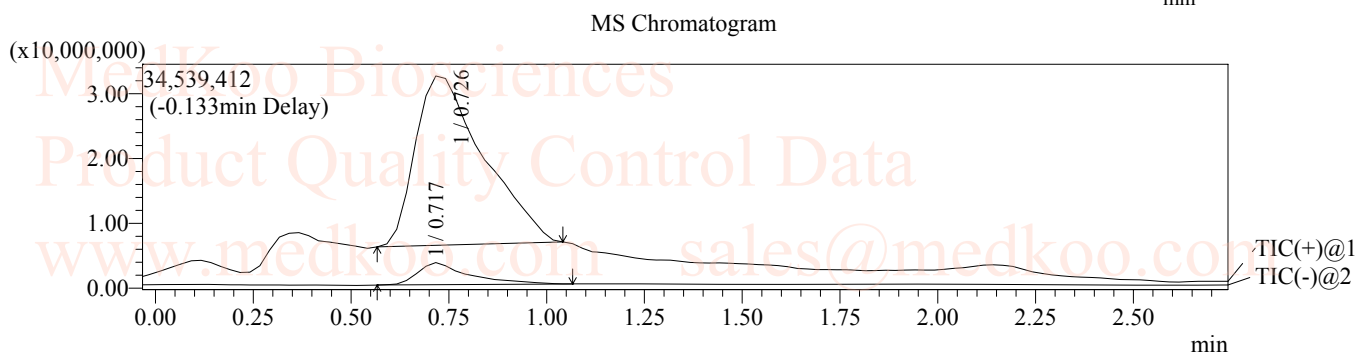
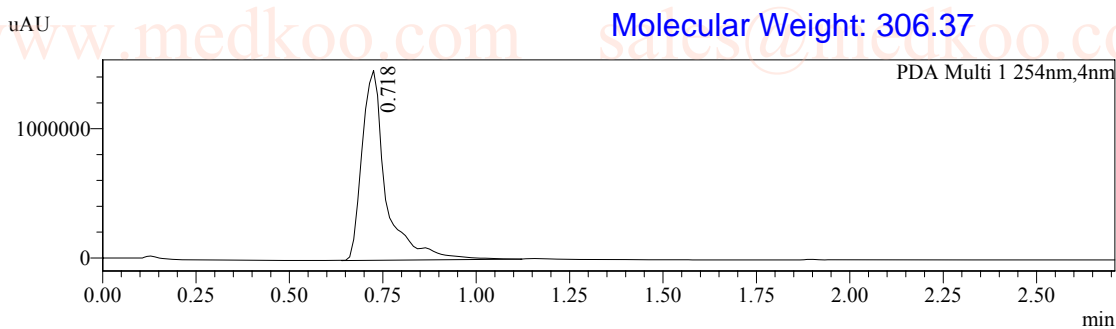
Detector A Ch2 254nm

Peak#	Ret. Time	Area	Area %	Theoretical Plate#
1	3.704	14533	0.226	7287.329
2	11.327	6405281	99.774	40509.952
Total		6419814	100.000	

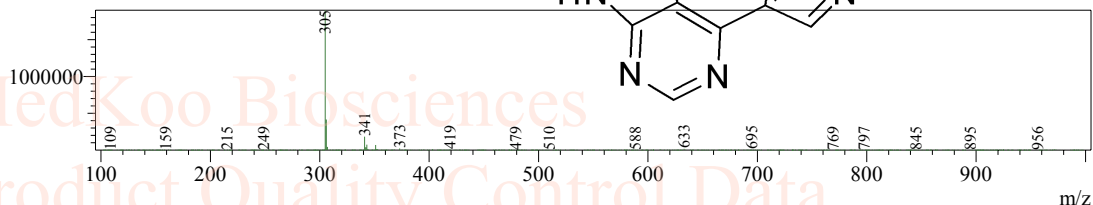
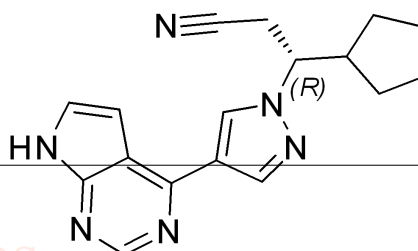
Ruxolitinib Free Base LC/MS Analysis

Column : YMC-Pack Pro C18, 150*4.6mm, 3um, JH-008
 Mobile Phase : Solvent A: H2O:FA=99.95:0.05 Solvent B: MeCN
 Temperature : 30°C.
 Flow rate : 0.8 mL/min.
 Run time : 3min@40%B, and then 15min (40-80%B), then 5 min 80%B
 Detector : UV
 Wavelength : 254/263nm
 Mass range : 50-1000
 Scan : Postive/Negative
 User name : SZJ
 Notebook page : ---
 Sample description : 1 mg/ml in MeCN
 Data Filename : 101-C.lcd
 Method Filename : positive-negative 3min-2.lcm
 Vial # : 1-103
 Injection Volume : 3 uL

MedKoo Cat#: 201512
 Name: Ruxolitinib free base
 CAS#: 941678-49-5 (free base)
 Lot#: X7P07R31
 Chemical Formula: C17H18N6
 Exact Mass: 306.15929
 Molecular Weight: 306.37



Peak#: 1 R.Time: 0.717 (Scan#: 62)
 MassPeaks: 565
 Spectrum Mode: Averaged 0.700-0.750 (60-64)
 BG Mode: Calc Segment 1 - Event 2



Peak#: 1 R.Time: 0.726 (Scan#: 61)
 MassPeaks: 468
 Spectrum Mode: Averaged 0.692-0.742 (59-63)
 BG Mode: Calc Segment 1 - Event 1

