

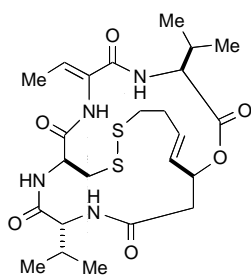
published NMR:

Narita K, Kikuchi T, Watanabe K, Takizawa T, Oguchi T,  
Kudo K, Matsuhara K,

Abe H, Yamori T, Yoshida M, Katoh T.

Chemistry - A European Journal

2009, 15(42):11174 - 11186.

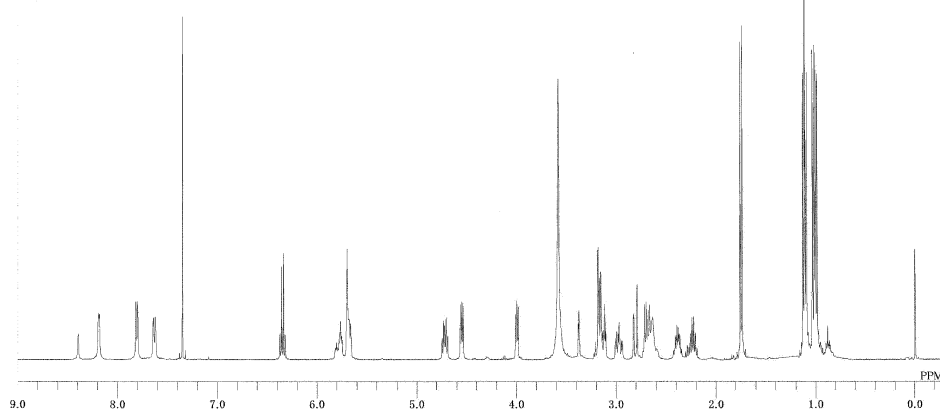


**3 (FK228)**  
[synthetic]

## Romidepsin 1H-NMR

Solvent = CDCl<sub>3</sub>

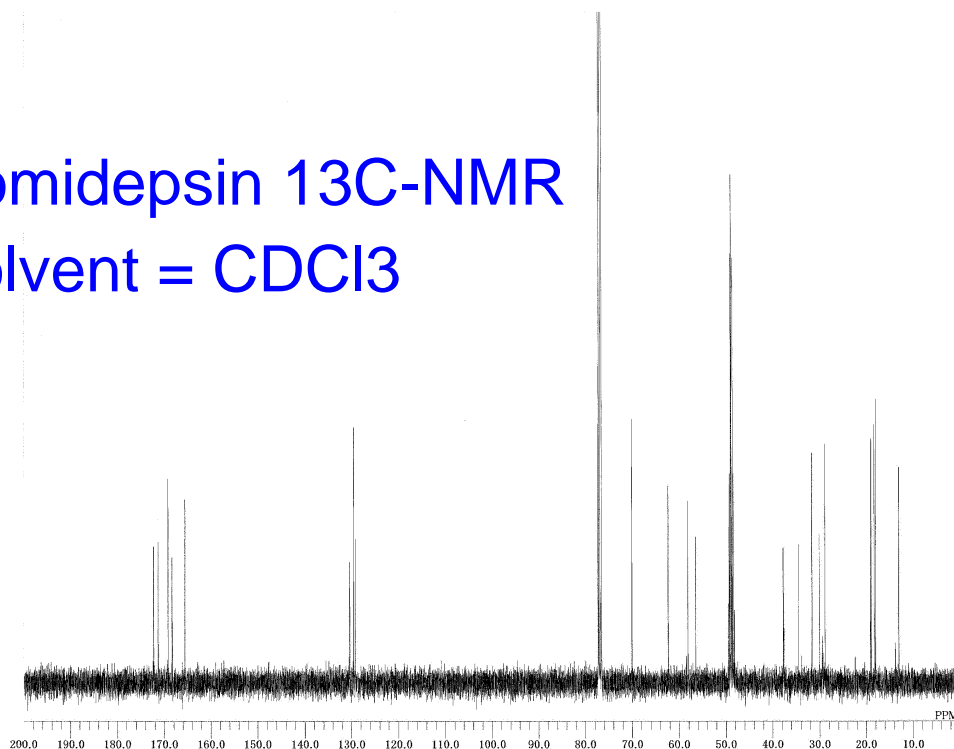
```
DFILE N-FK-228.als
COMNT N-FK-228
DATIM Fri Jun 08 18:26:52 20
OBNUC 1H
EXMOD NON
OBFRQ 399.65 MHz
OBSET 124.00 KHz
OBFIN 10500.00 Hz
POINT 16394
FREQU 7992.01 Hz
SCANS 32
ACQTM 2.0501 sec
PD 4.9300 sec
PWI 5.40 usec
IRNUC 1H
CTEMP 23.7 c
SLVNT CDCL3
EXREF 0.00 ppm
BF 0.00 Hz
RGAIN 15
```



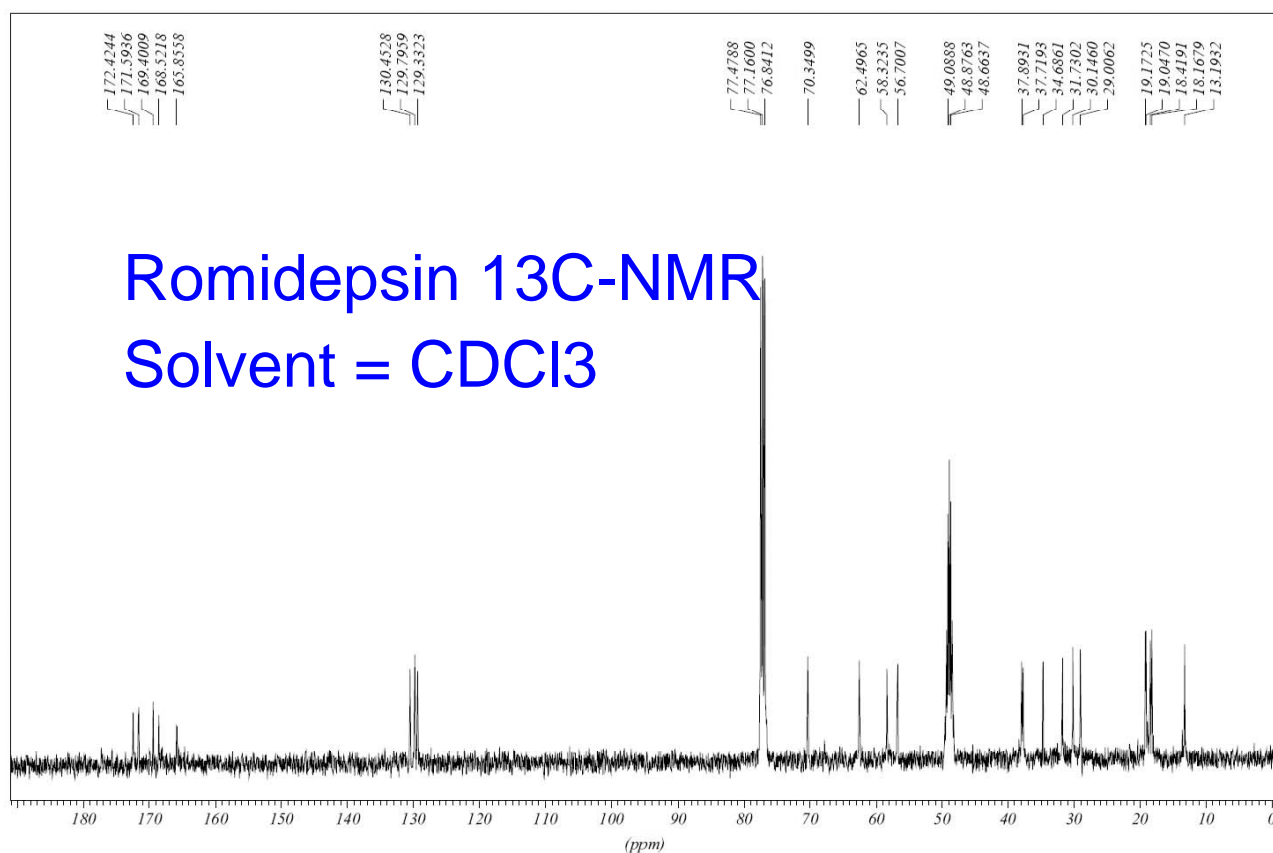
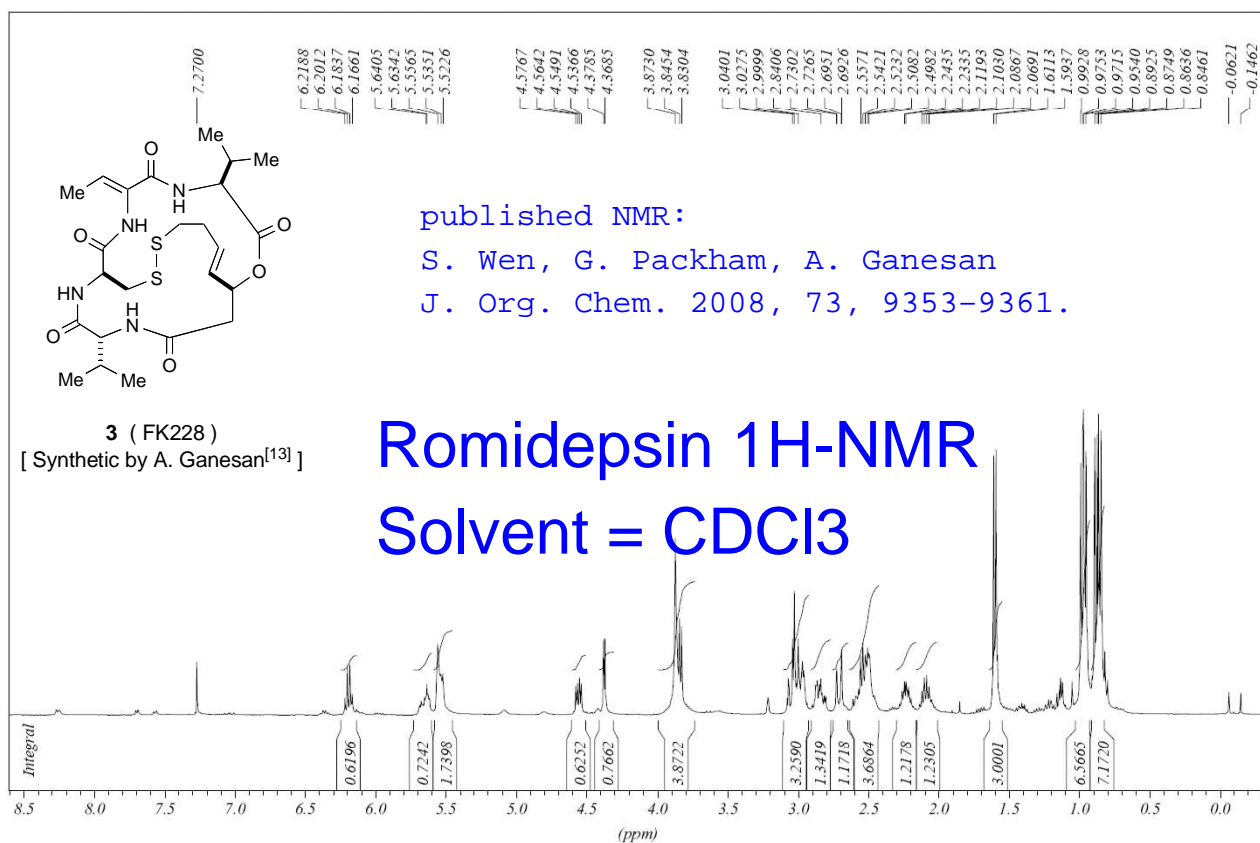
## Romidepsin 13C-NMR

Solvent = CDCl<sub>3</sub>

```
DFILE N-FK-228 C-13.als
COMNT N-FK-228
DATIM Fri Jun 08 19:50:16 20
OBNUC 13C
EXMOD BCM
OBFRQ 100.40 MHz
OBSET 125.00 KHz
OBFIN 10500.00 Hz
POINT 32768
FREQU 27115.64 Hz
SCANS 1602
ACQTM 1.2083 sec
PD 1.7920 sec
PWI 5.90 usec
IRNUC 1H
CTEMP 26.1 c
SLVNT CDCL3
EXREF 77.00 ppm
BF 0.00 Hz
RGAIN 24
```



Note: this NMR spectrum was copied from literature for comparison only



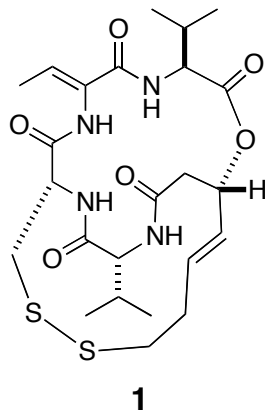
Note: this NMR spectrum was copied from literature for comparison only

400 MHz, CDCl<sub>3</sub> :  
CD<sub>3</sub>OD (10 : 1)

Published NMR

Greshock TJ, Johns DM, Noguchi Y, Williams RM. *Org Lett.* 2008 Feb  
21;10(4):613-6.

S53



Romidepsin 1H-NMR  
Solvent = CDCl<sub>3</sub>

Note: this NMR spectrum was copied from literature for comparison only

