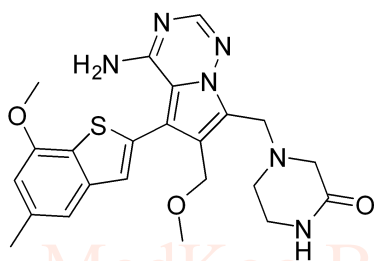
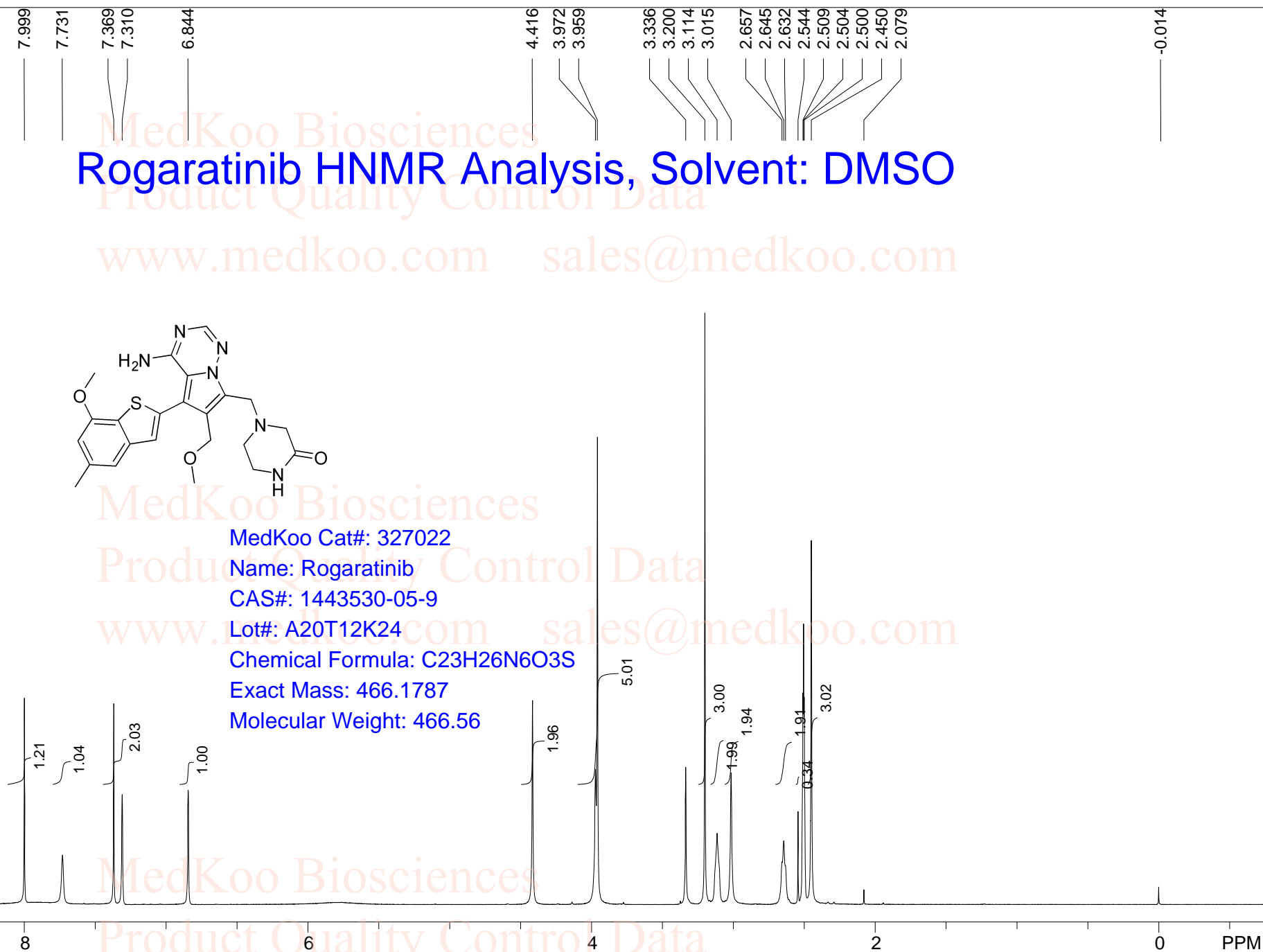


Rogaratinib HNMR Analysis, Solvent: DMSO



MedKoo Cat#: 327022
 Name: Rogaratinib
 CAS#: 1443530-05-9
 Lot#: A20T12K24
 Chemical Formula: C₂₃H₂₆N₆O₃S
 Exact Mass: 466.1787
 Molecular Weight: 466.56



DMSO							
F1: 400.130	F2: 1.000	SW1: 8224	OF1: 2470.2	PTS1d: 32768			
EX: zg30	PW: 4.50 usec	PD: 0.00	www.medkoo.com	LB: 0.3	sales@medkoo.com		

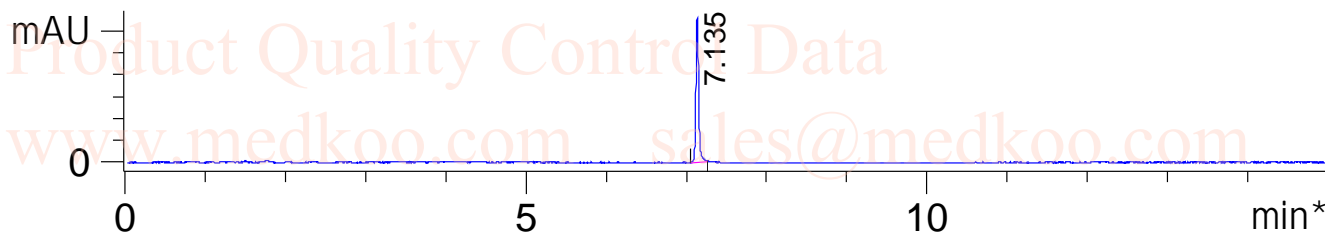
Rogaratiniib HPLC Analysis

Sample Name : 1443530-05-9

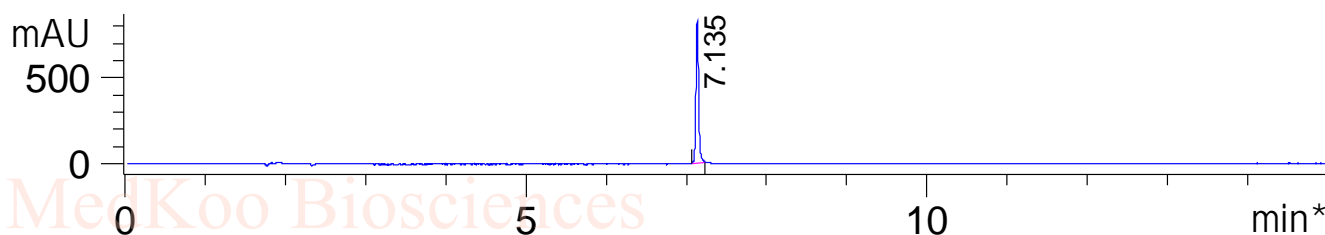
Sample Info : Easy-Access Me d: '1-POS-15MIN'

Method Info : Mobile Phase: A:Water(10mM NH₄HCO₃) B:ACN
Gradient: 5% increase to 95%B within 1.4min, 95%B for 1.6min.
Flow Rate: 1.8ml/min
Column: XBridge C18,4.6*50mm,3.5um
Column Temperature: 45 C
Detection:UV(214,4nm) and MS(ESI,Neg mode,110 to 1000 amu)

*DAD1 A, Sig=214,4 Ref=off



*DAD1 B, Sig=254,4 Ref=off

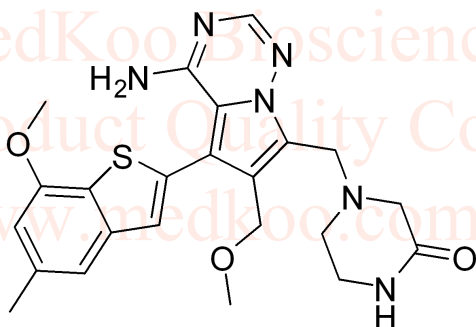


Integration Results for DAD1 A, Sig=214,4 Ref=off

RetTim	Width	Area	Height	Area%
7.13	0.04	3214.77	1327.46	100.00

Integration Results for DAD1 B, Sig=254,4 Ref=off

RetTim	Width	Area	Height	Area%
7.14	0.04	1958.49	829.95	100.00



MedKoo Cat#: 327022

Name: Rogaratinib

CAS#: 1443530-05-9

Lot#: A20T12K24

Chemical Formula: C₂₃H₂₆N₆O₃S

Exact Mass: 466.1787

Molecular Weight: 466.56

Rogaratinib LC/MS Analysis

Sample Name : 3665752/27/;

Method Info : Mobile Phase: A:Water(10mM NH₄HCO₃) B:ACN

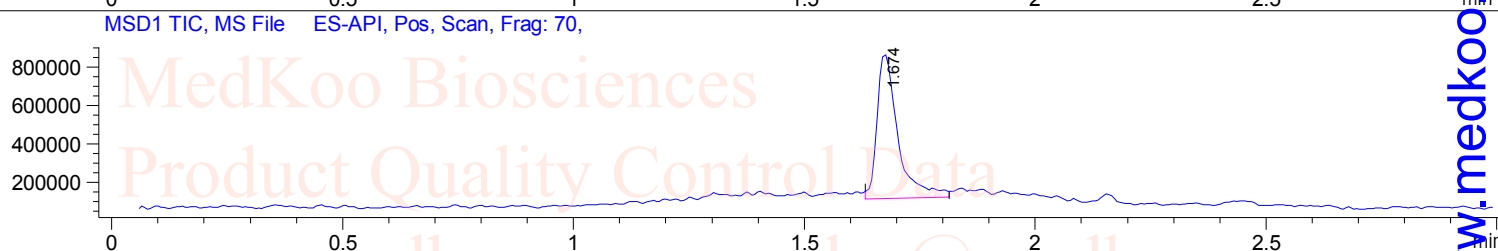
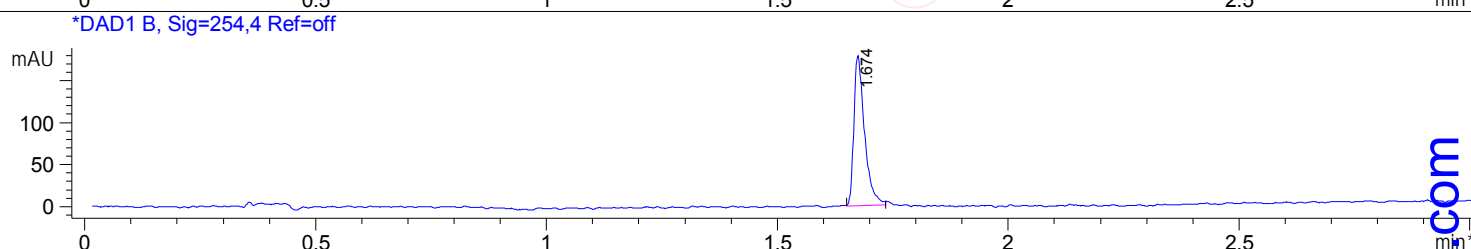
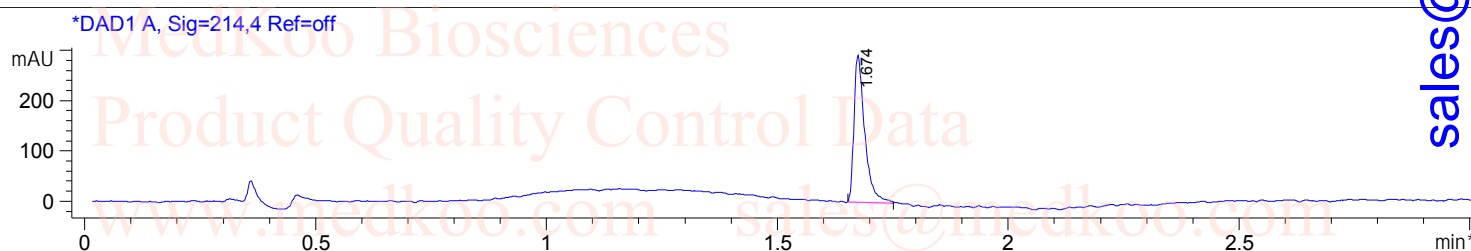
Gradient: 5% increase to 95%B within 1.4min, 95%B for 1.6min.

Flow Rate: 1.8ml/min

Column: XBridge C18,4.6*50mm,3.5um

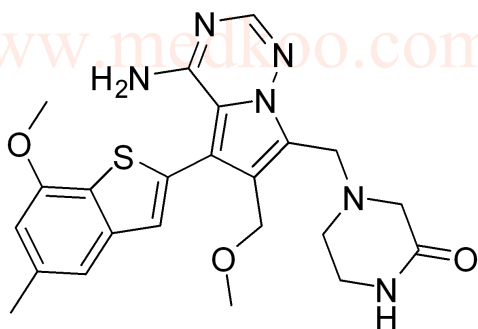
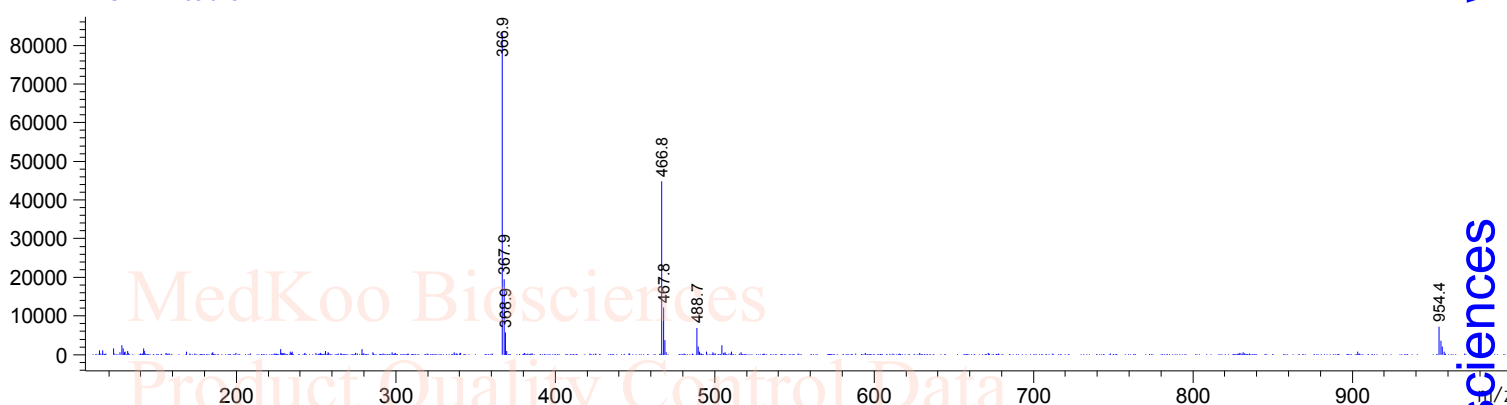
Column Temperature: 45 C

Detection:UV(214,4nm) and MS(ESI,Neg mode,110 to 1000 amu)



Ret. Time: 1.67

*ES-API Positive



MedKoo Cat#: 327022

Name: Rogaratinib

CAS#: 1443530-05-9

Lot#: A20T12K24

Chemical Formula: C₂₃H₂₆N₆O₃S

Exact Mass: 466.1787

Molecular Weight: 466.56

sales@medkoo.com

www.medkoo.com

MedKoo Biosciences