

8.445
8.440
7.923
7.922
7.802
7.747
7.723
7.711
7.705
7.687
7.681
7.375
7.267

3.268
3.257
3.252
3.245
3.191
3.179
3.168
3.079
2.735
2.733
2.547

1.711

0.771
0.754
0.742
0.663
0.651
0.635
0.007
-0.001
-0.009

Risdiplam HNMR Analysis, Solvent: DMSO

www.medkoo.com Sales@medkoo.com

MedKoo Cat#: 561863

Name: Risdiplam

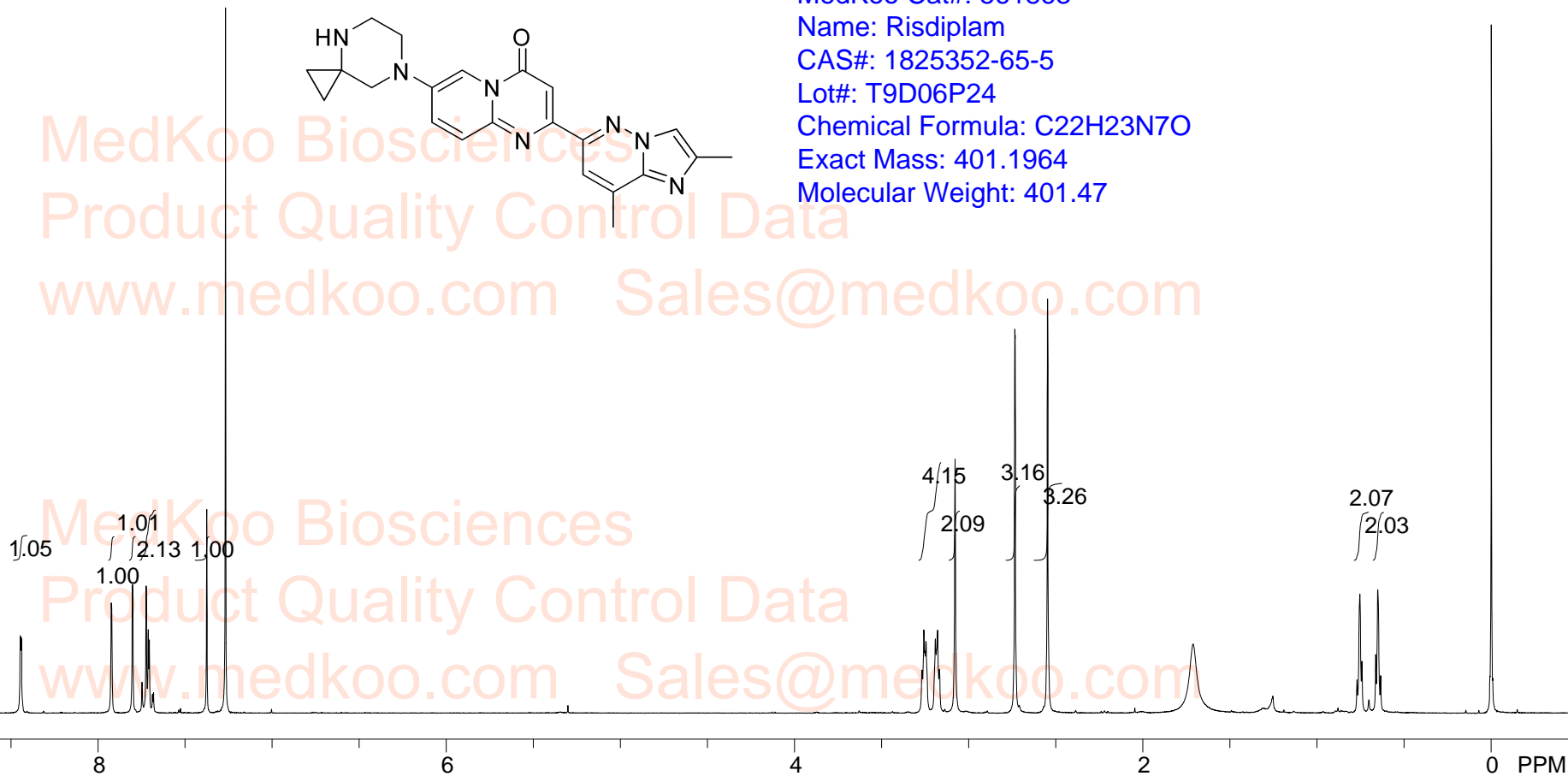
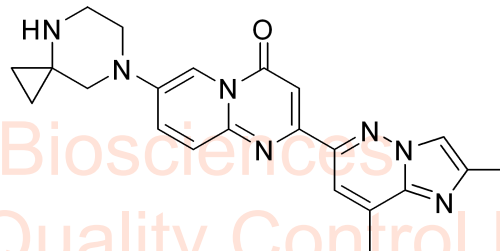
CAS#: 1825352-65-5

Lot#: T9D06P24

Chemical Formula: C₂₂H₂₃N₇O

Exact Mass: 401.1964

Molecular Weight: 401.47



www.medkoo.com Sales@medkoo.com

nmrB005, CDCl₃, F1: 400.132 F2: 1.000 SW1: 8224 OF1: 2464.1 PTS1d: 32768

EX: z33 MedKoo Biosciences PW: 13.0 usec PD: 1.00 sec LB: 0.0 sales@medkoo.com

www.medkoo.com

Risdiplam HPLC Analysis

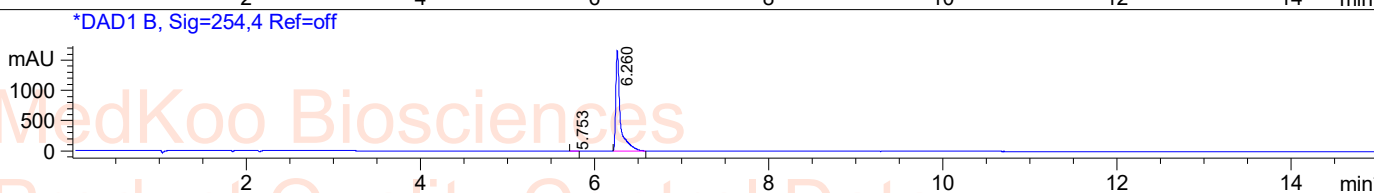
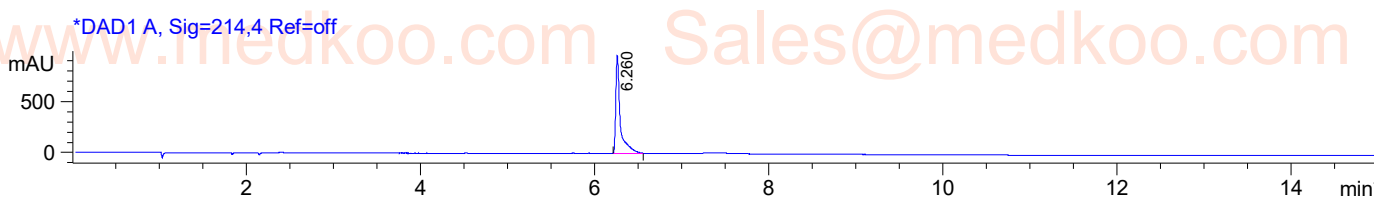
Sample Name : Risdiplam
Acq. Operator :
Spec. Reported : MS Integration
Acq. Method : C:\CHEM32\1\METHODS\2-HPLC-15MIN.M
Analysis Method : C:\CHEM32\1\METHODS\2-HPLC-15MIN.M
Sample Info : Easy-Access Method: '2-HPLC-15MIN' 401.00
Method Info : Mobile Phase: A:Water(10mM NH₄HCO₃) B:ACN
 Gradient: 5% increase to 95%B within 8min,95%B for 7min
 Flow Rate: 1 ml/min
 Column: XBridge C18,4.6*150mm,3.5um
 Column Temperature: 45 C
 Detection:UV(214,4nm) and MS(ESI,Pos mode,110 to 1500 amu)

Tgt Mass(EZX) : 401.00

Location : P2-F-05

Inj : 1

Inj Volume : 2 ul

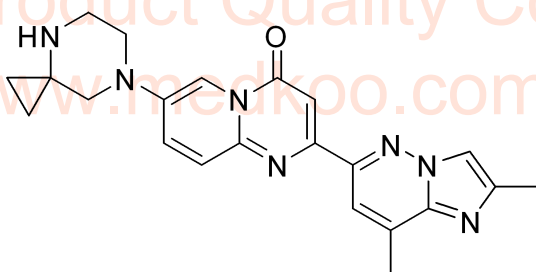


Integration Results for DAD1 A, Sig=214,4 Ref=off

RetTim	Width	Area	Height	Area%
6.26	0.05	3503.67	958.03	100.00

Integration Results for DAD1 B, Sig=254,4 Ref=off

RetTim	Width	Area	Height	Area%
5.75	0.04	14.55	5.15	0.24
6.26	0.05	6125.06	1657.90	99.76



MedKoo Cat#: 561863

Name: Risdiplam

CAS#: 1825352-65-5

Lot#: T9D06P24

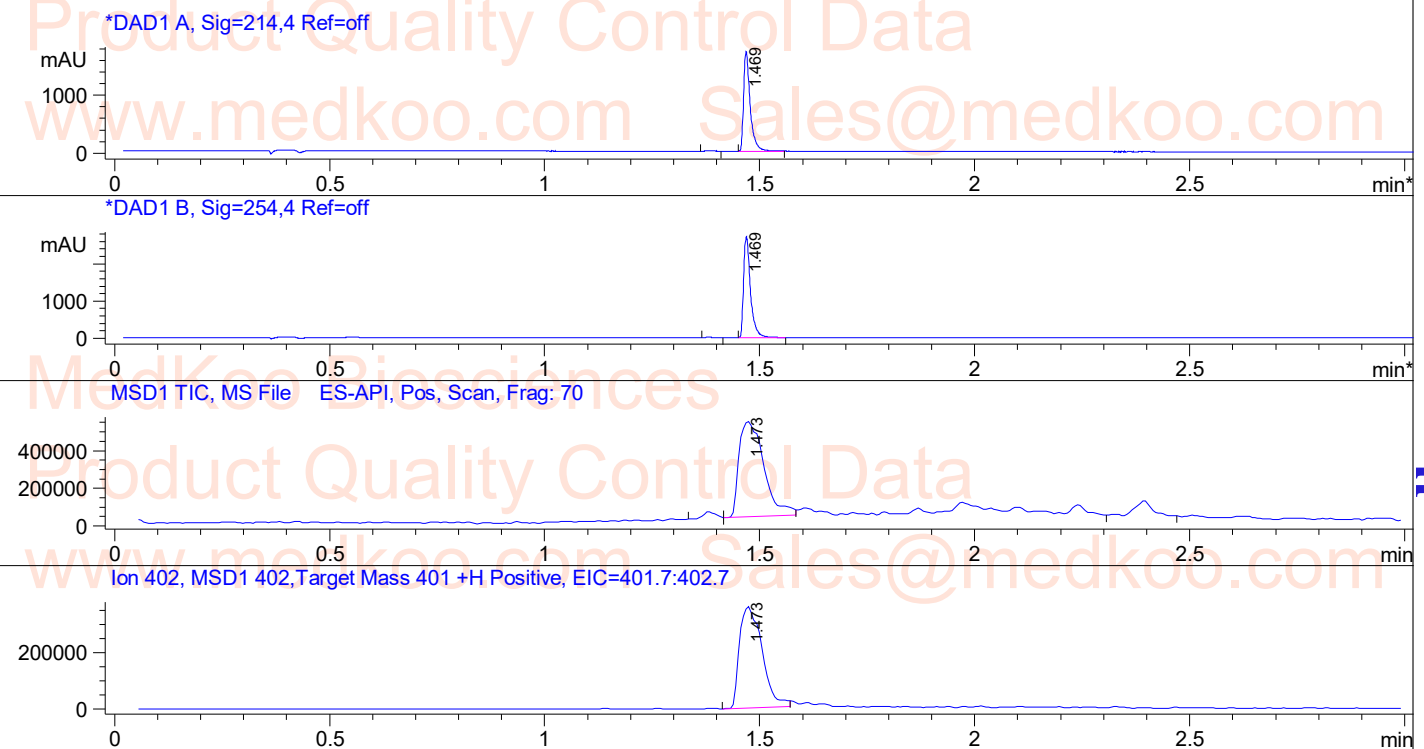
Chemical Formula: C₂₂H₂₃N₇O

Exact Mass: 401.1964

Molecular Weight: 401.47

Risdiplam LC/MS Analysis

Sample Name : Risdiplam
Acq. Operator : T251-MONITOR
Spec. Reported : MS Integration
Acq. Method : C:\CHEM32\1\METHODS\1-POS-3MIN.M
Analysis Method : C:\CHEM32\1\METHODS\1-POS-3MIN.M
Sample Info : Easy-Access Method: '1-POS-3MIN' 401.00
Method Info : Mobile Phase: A:Water(10mM NH4HCO3) B:ACN
Gradient: 5% increase to 95%B within 1.3min,95%B for 1.7min
Flow Rate: 1.8 ml/min
Column:Xbridge C18,3.5um,4.6*50mm
Column Temperature:45C
Detection:UV(214,4nm) and MS(ESI,Pos mode,110 to 1000 amu)



Ret. Time: 1.47 < POSITIVE SPECTRA >>>

