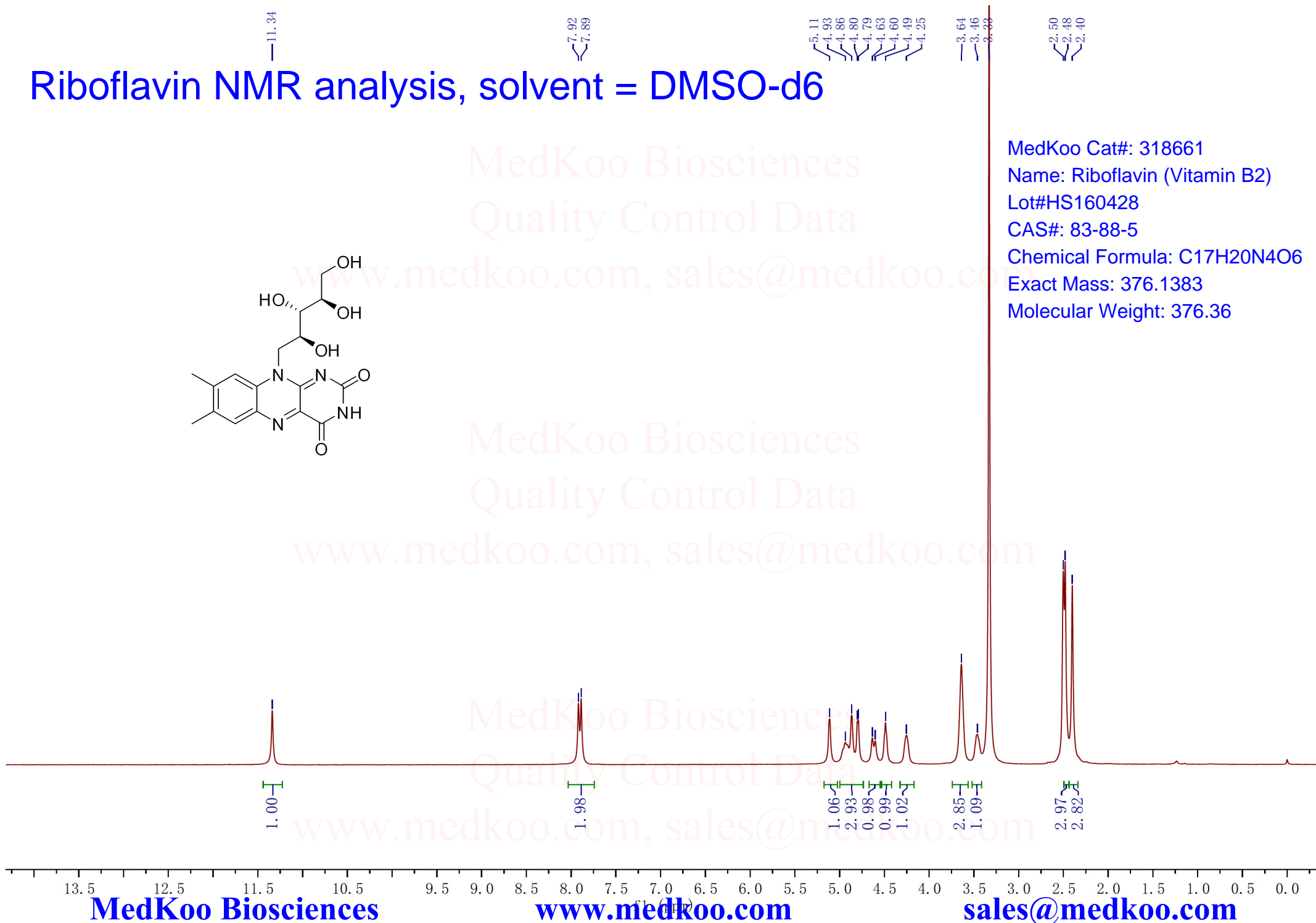
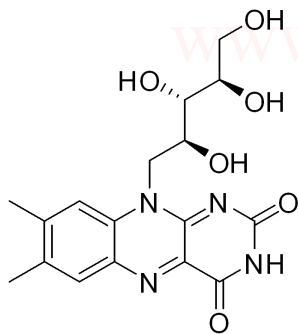


Riboflavin NMR analysis, solvent = DMSO-d6

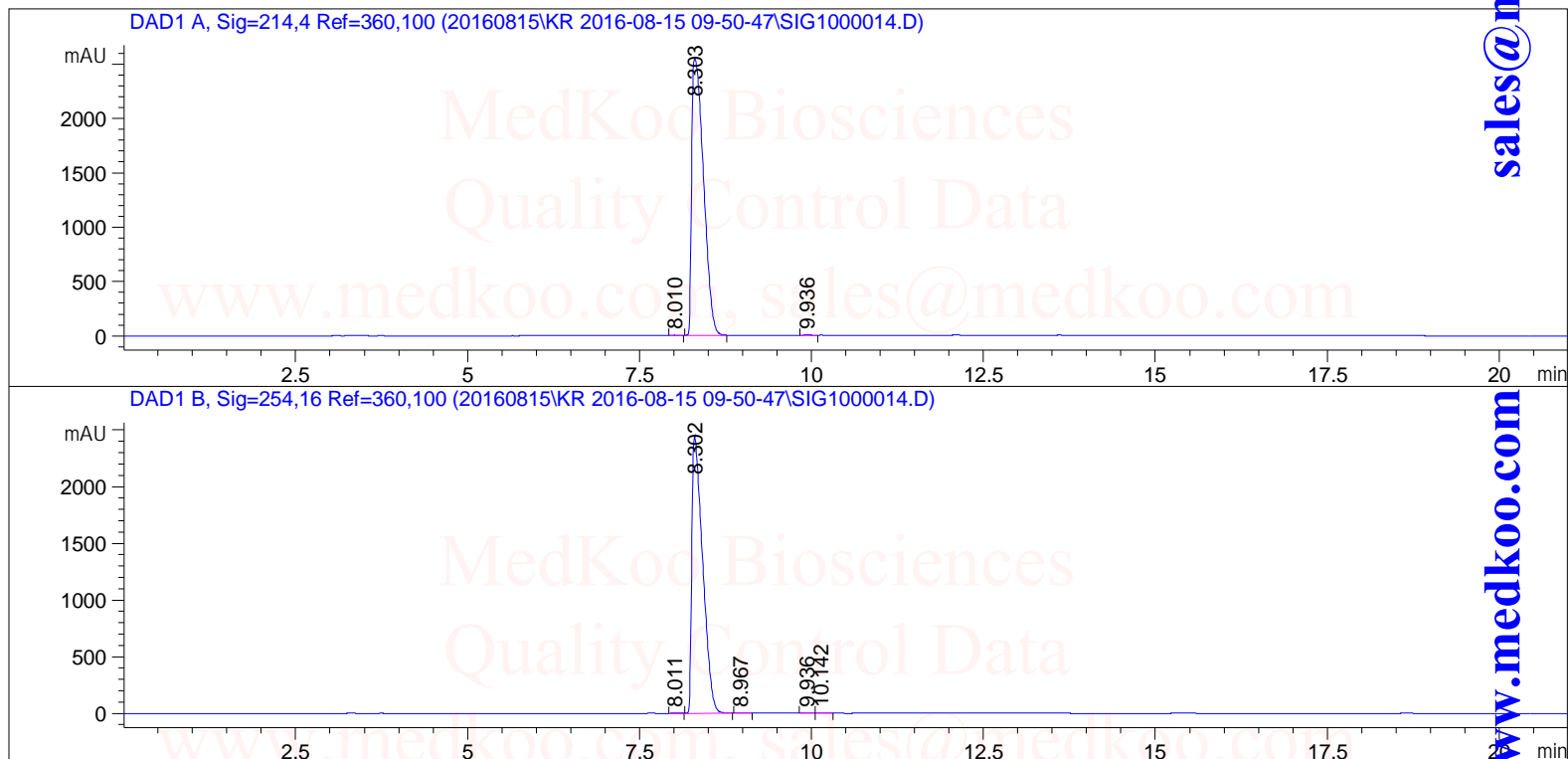


MedKoo Cat#: 318661
Name: Riboflavin (Vitamin B2)
Lot#HS160428
CAS#: 83-88-5
Chemical Formula: C17H20N4O6
Exact Mass: 376.1383
Molecular Weight: 376.36

Riboflavin HPLC analysis

=====
操作者 : zj 序列行 : 14
仪器 : 仪器 1 位置 : 样品瓶 18
进样次数 : 1
进样量 : 2.0 µl
采集方法 : C:\CHEM32\1\DATA\20200815\KR09-50-47\TEST-KR.M
分析方法 : C:\CHEM32\1\METHODS\TEST-KR

(调用后修改)



=====
面积百分比报告
=====

排序 : 信号
乘积因子: : 1.0000 MedKoo Cat#: 318661
稀释因子: : 1.0000 Name: Riboflavin (Vitamin B2)
内标使用乘积因子和稀释因子 Lot#HS160428
CAS#: 83-88-5
Chemical Formula: C17H20N4O6
Exact Mass: 376.1383
Molecular Weight: 376.36

信号 1: DAD1 A, Sig=214,4 Ref=360,100

峰 #	保留时间 [min]	类型	峰宽 [min]	峰面积 [mAU*s]	峰高 [mAU]	峰面积 %
1	8.010	BB	0.0849	25.11826	4.38058	0.0823
2	8.303	BB	0.1895	3.04608e4	2546.59204	99.8151
3	9.936	BB	0.0875	31.30762	5.57641	0.1026

总量 : 3.05172e4 2556.54903

Riboflavin HPLC analysis

信号 2: DAD1 B, Sig=254,16 Ref=360,100

峰 #	保留时间 [min]	类型	峰宽 [min]	峰面积 [mAU*s]	峰高 [mAU]	峰面积 %
1	8.011	BB	0.0924	21.87749	3.52573	0.0815
2	8.302	BB	0.1678	2.67690e4	2444.56494	99.6940
3	8.967	BB	0.0936	15.56512	2.40213	0.0580
4	9.936	BV	0.0994	28.72302	4.33077	0.1070
5	10.142	VB	0.1102	16.00076	2.21639	0.0596

总量 : 2.68512e4 2457.03996

=====
*** 报告结束 ***

MedKoo Cat#: 318661

Name: Riboflavin (Vitamin B2)

Lot#HS160428

CAS#: 83-88-5

Chemical Formula: C₁₇H₂₀N₄O₆

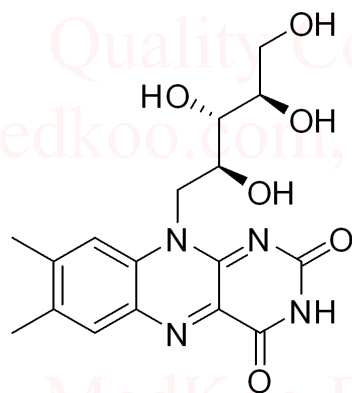
Exact Mass: 376.1383

Molecular Weight: 376.36

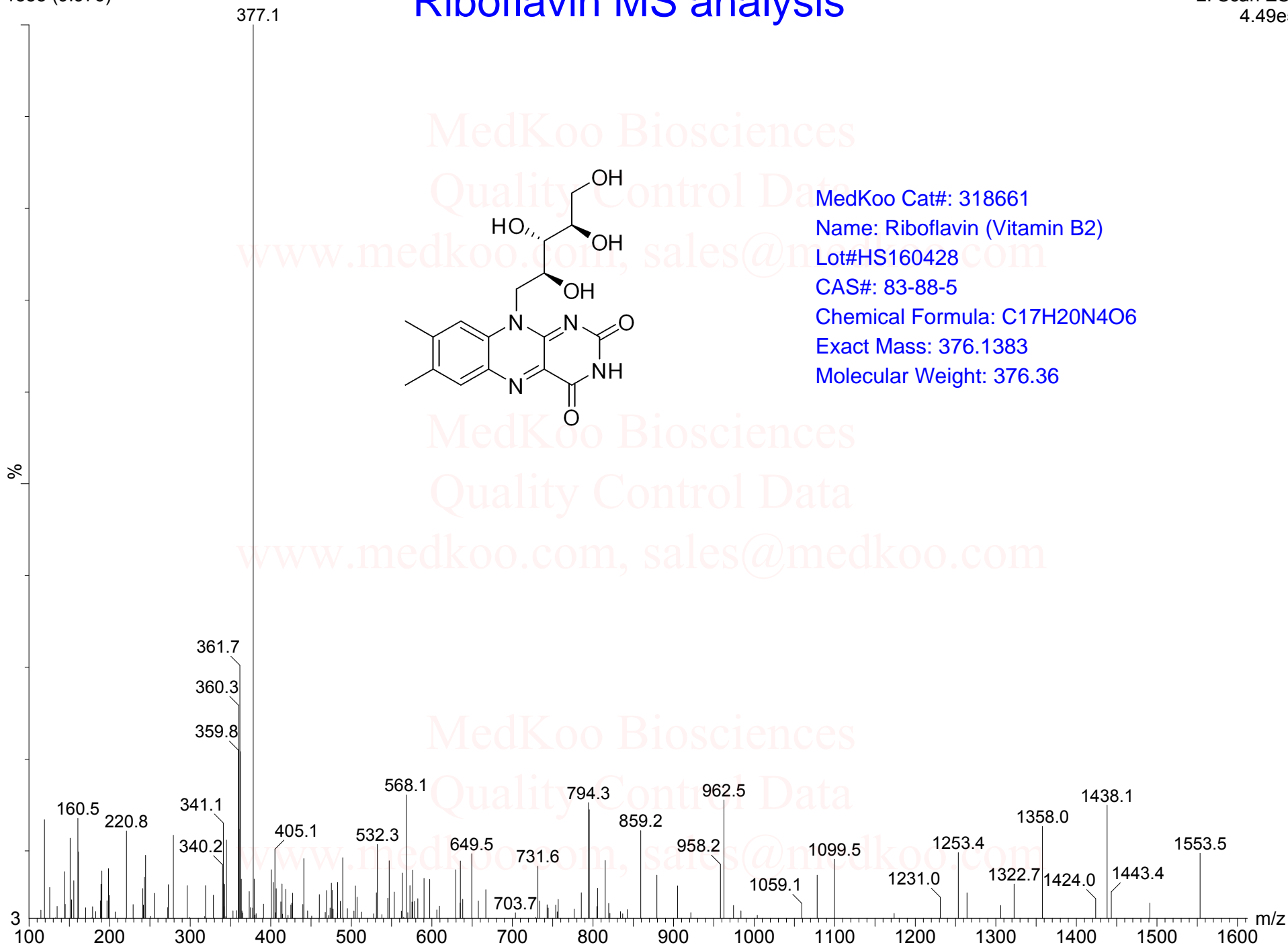
s 1353 (9.976)

Riboflavin MS analysis

2: Scan ES+
4.49e5



MedKoo Cat#: 318661
Name: Riboflavin (Vitamin B2)
Lot#HS160428
CAS#: 83-88-5
Chemical Formula: C17H20N4O6
Exact Mass: 376.1383
Molecular Weight: 376.36



MedKoo Biosciences

www.medkoo.com

sales@medkoo.com