

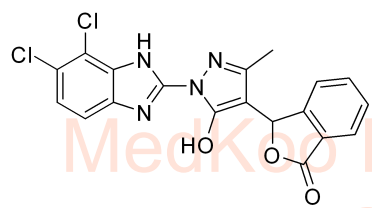
7.867
7.848
7.744
7.743
7.591
7.543
7.523
7.433
7.412
7.314
7.293
6.587

2.512
2.507
2.503
2.499
2.062

-0.001

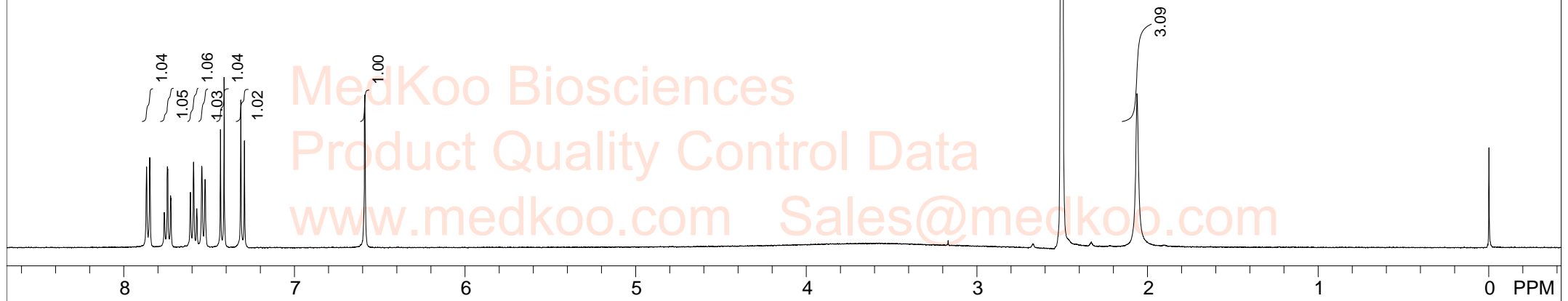
RU320521 HNMR Analysis, Solvent :DMSO

Product Quality Control Data
www.medkoo.com Sales@medkoo.com



MedKoo Cat#: 555738
Name: RU320521
CAS#: 2262452-06-0
Lot#: A21T09K06
Chemical Formula: C19H12Cl2N4O3
Exact Mass: 414.0286
Molecular Weight: 415.23

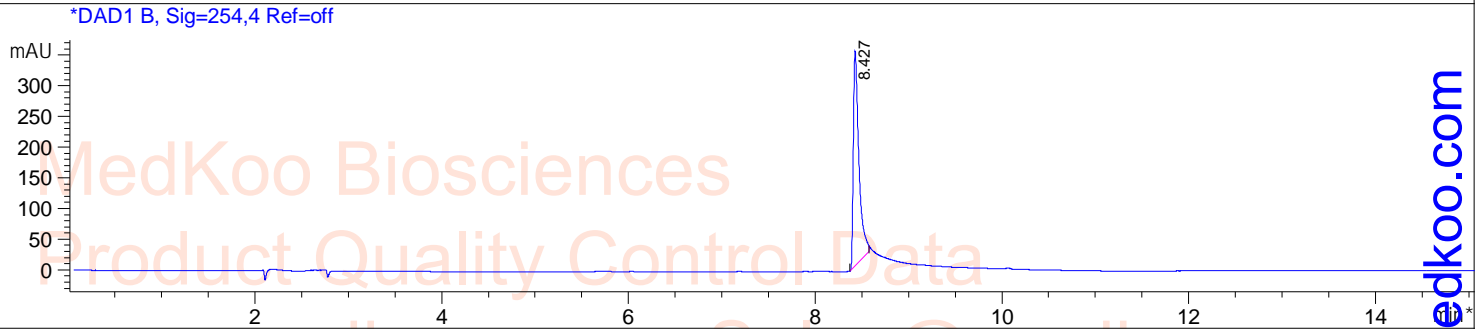
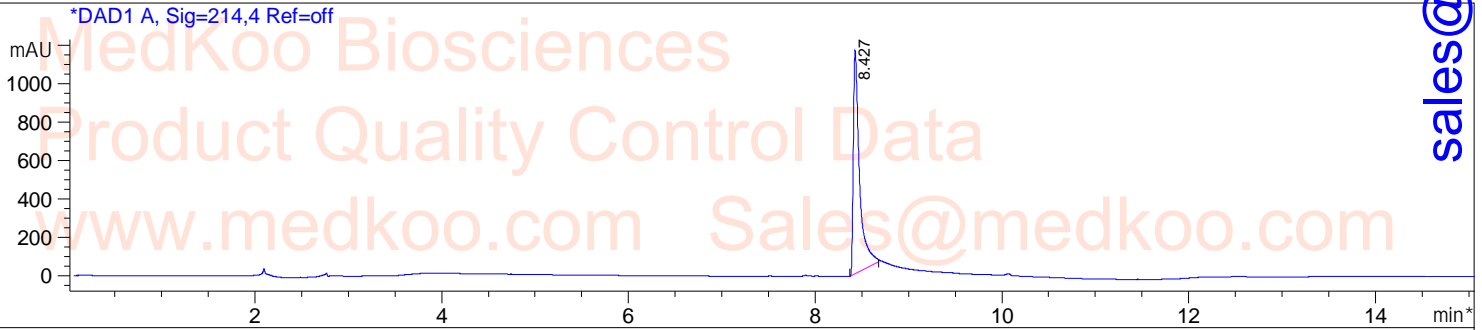
Product Quality Control Data
www.medkoo.com Sales@medkoo.com



DMSO		U		
F1: 400.130	F2: 1.000	SW1: 8224	OF1: 2469.3	PTS1d: 32768
EX: zg30	PW: 5.00 usec	PD: 1.00 usec	LB: 0.3	sales@medkoo.com

RU320521 HPLC Analysis

Sample Name : 2262452-06-0
Method Info : Column:SUNFire C18 (4.6x 150 mm, 3.5um)
Mobile phase: H2O(0.01%TFA) (A) / ACN(0.01%TFA)(B)
Elution program: Gradient from 5 to 95% of B in 8min at 1ml/min
Temperature: 40 °C
Detection: UV (214 , 4 nm) and MS (ESI, Pos mode ,100 to 1500 amu)

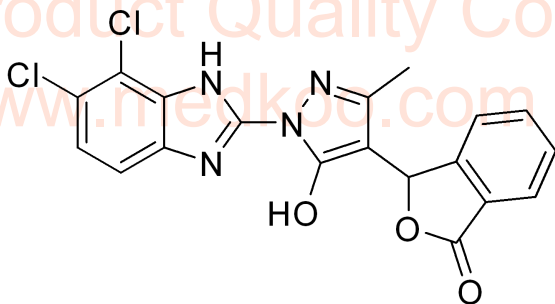


Integration Results for DAD1 A, Sig=214,4 Ref=off

RetTim	Width	Area	Height	Area%
8.43	0.07	5408.58	1162.82	100.00

Integration Results for DAD1 B, Sig=254,4 Ref=off

RetTim	Width	Area	Height	Area%
8.43	0.06	1450.33	349.94	100.00



MedKoo Cat#: 555738

Name: RU320521

CAS#: 2262452-06-0

Lot#: A21T09K06

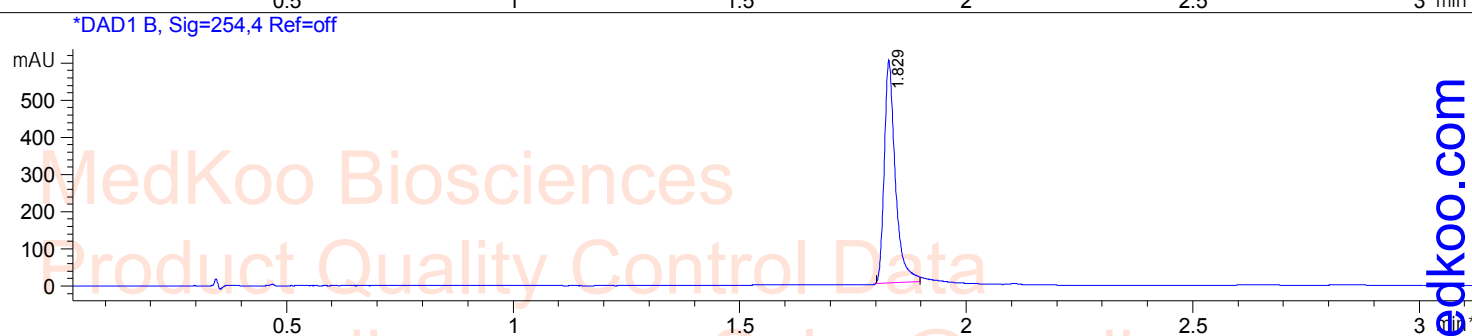
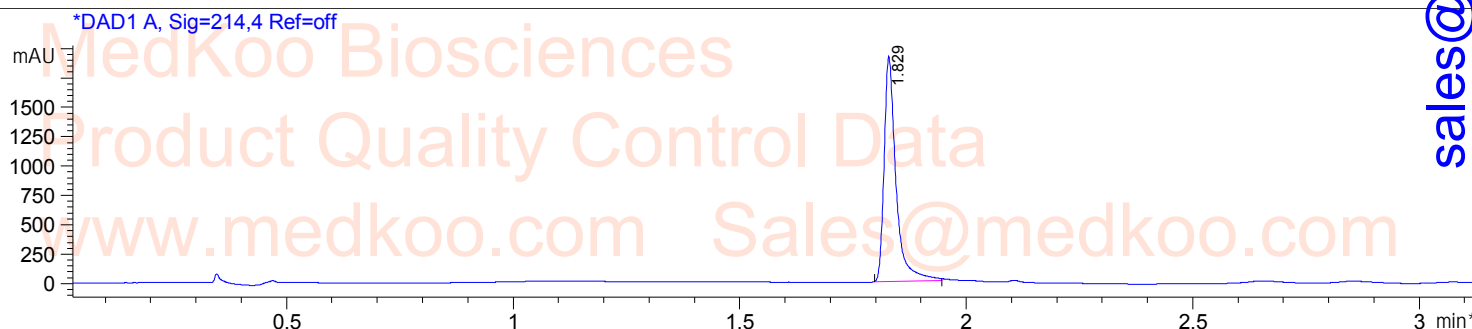
Chemical Formula: C₁₉H₁₂Cl₂N₄O₃

Exact Mass: 414.0286

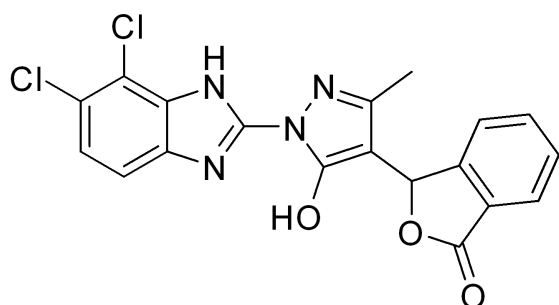
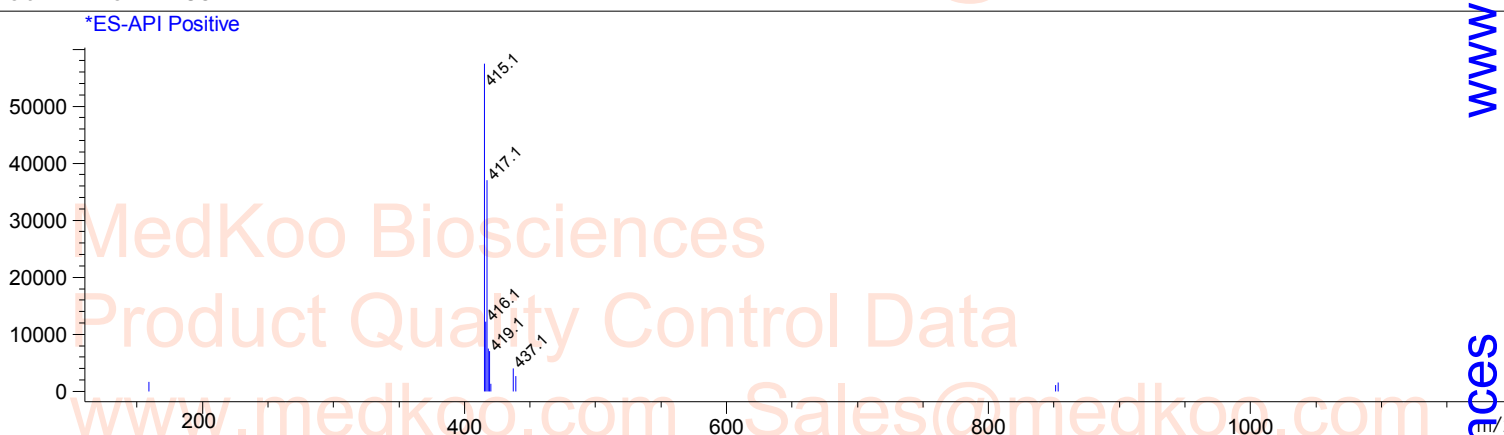
Molecular Weight: 415.23

RU320521 LC/MS Analysis

Sample Name : 2262452-06-0
Method Info : Column:SunFire C18 (4.6x 50 mm,3.5 um)
Mobile phase: H2O(0.01%TFA) (A) / ACN(0.01%TFA)(B)
Elution program: Gradient from 10 to95% of B in 1.4 min at 2ml/min
Temperature: 50 °C
Detection: UV (214 , 4 nm) and MS (ESI, Pos mode ,110 to 1000 amu)



Ret. Time: 1.83



MedKoo Cat#: 555738

Name: RU320521

CAS#: 2262452-06-0

Lot#: A21T09K06

Chemical Formula: C19H12Cl2N4O3

Exact Mass: 414.0286

Molecular Weight: 415.23

sales@medkoo.com

www.medkoo.com

MedKoo Biosciences