

12.901
12.888
12.880

11.700
11.689
11.666
11.653
11.645
11.634

10.065
10.057
10.051
10.045

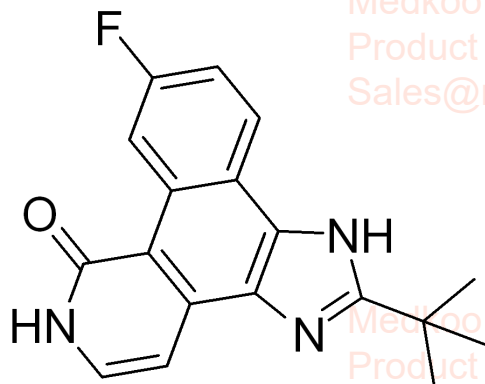
8.583

7.584
7.580
7.574
7.565
7.314
7.296
7.293
7.265

5.758

3.338
3.232
3.169
2.641
2.637
2.633
2.542
2.538
2.509
2.505
2.503
2.499
2.364
2.360
2.075
2.075
1.642
1.557
1.517
1.388
1.231

Pyridone 6 HNMR Analysis, Solvent:DMSO



Medkoo Biosciences

Product Quality Control Data
Sales@medkoo.com

MedKoo Cat#: 406781

Name: Pyridone 6

CAS#: 457081-03-7

Lot#: A21T09K29

Chemical Formula: C₁₈H₁₆FN₃O

Exact Mass: 309.1277

Molecular Weight: 309.3444

Medkoo Biosciences

Product Quality Control Data

Sales@medkoo.com

Medkoo Biosciences

Product Quality Control Data

Sales@medkoo.com

0.87

0.93

1.00

1.02

2.01

1.00

9.08

14

12

10

8

6

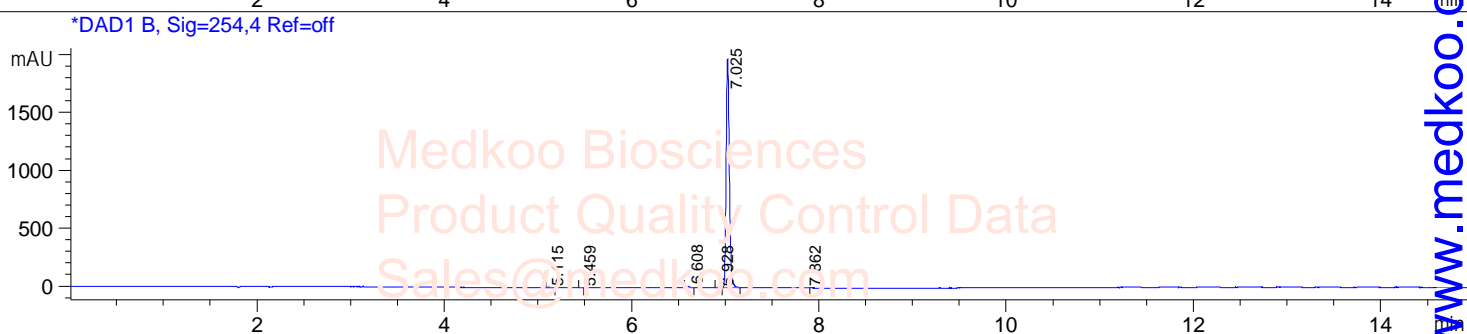
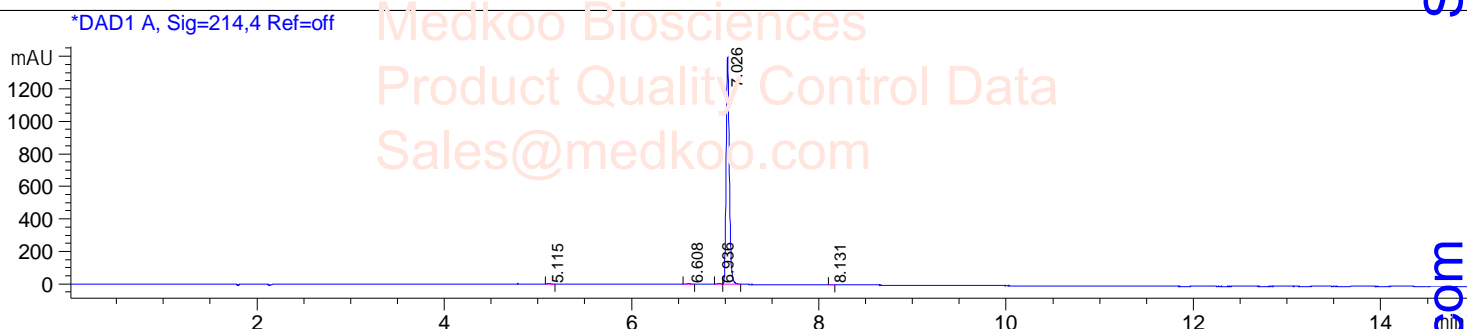
4

2

PPM

Pyridone 6 HPLC Analysis

Sample Name : PYRIDONE6-3 **Tgt Mass(EZX)** :
Acq. Operator : A02-Monitor **Location** : P1-C-01
Spec. Reported : MS Integration **Inj** : 1
Acq. Method : D:\METHODS\2-POS-15MIN.M **Inj Volume** : 2 ul
Analysis Method : D:\METHODS\2-POS-15MIN.M
Sample Info : Easy-Access Method: '2-POS-15MIN.M'
Method Info : Column: XBridge C18 (4.6* 50 mm , 3.5 um)
 Mobile phase: H2O(10 mmol NH4HCO3) (A) / ACN(B)
 Elution program: Gradient from 10 to 95% of B in 8 min at 1 ml/min
 Column Temperature: 40 °C
 Detection: UV (214 , 4 nm) and MS (ESI , Pos mode , 80 to 1500 amu)

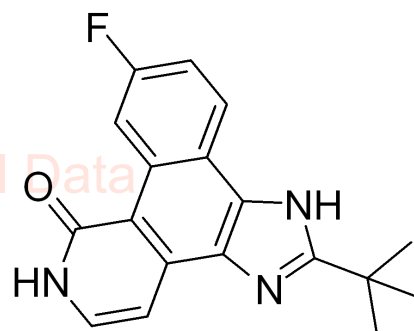


Integration Results for DAD1 A, Sig=214,4 Ref=off

RetTim	Width	Area	Height	Area%
5.12	0.03	8.94	3.91	0.27
6.61	0.03	14.32	6.78	0.44
6.94	0.04	17.74	6.89	0.54
7.03	0.03	3218.55	1392.81	98.65
8.13	0.03	2.70	1.22	0.08

Integration Results for DAD1 B, Sig=254,4 Ref=off

RetTim	Width	Area	Height	Area%
5.11	0.03	6.07	2.72	0.13
5.46	0.02	1.79	1.14	0.04
6.61	0.03	23.52	11.14	0.50
6.93	0.03	8.94	4.53	0.19
7.03	0.04	4629.29	1972.77	99.05
7.86	0.03	3.86	1.64	0.08



MedKoo Cat#: 406781
 Name: Pyridone 6
 CAS#: 457081-03-7
 Lot#: A21T09K29
 Chemical Formula: C18H16FN3O
 Exact Mass: 309.1277
 Molecular Weight: 309.3444

Pyridone 6 LC/MS Analysis

Sample Info : Easy-Access

Method Info : Mobile Phase: A: water (0.01%TFA) B: ACN (0.01%TFA)

Gradient: 5% increase to 95%B within 1.3 min, 95%B for 1.7 min.

Flow Rate: 2.0ml/min

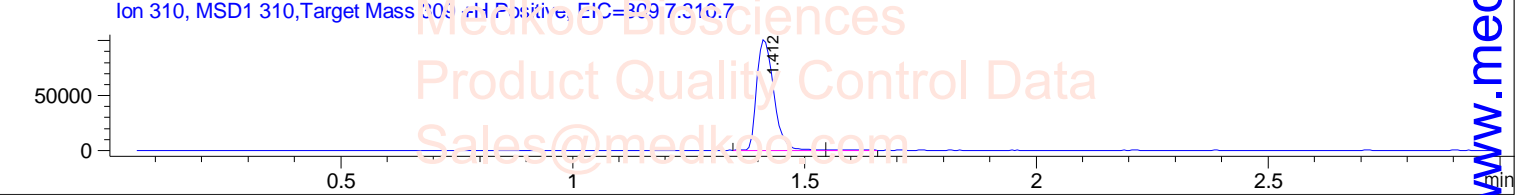
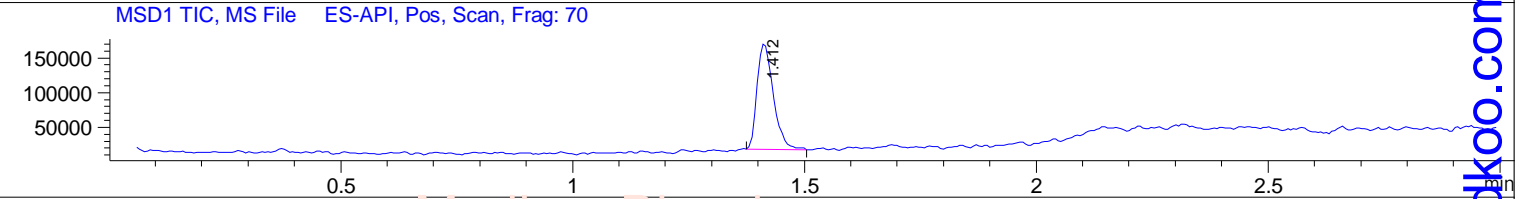
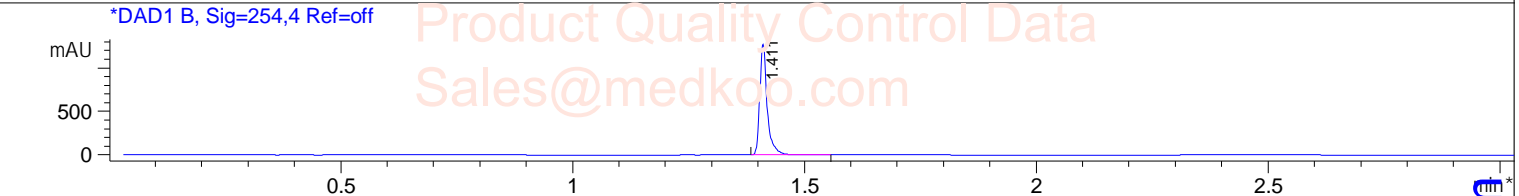
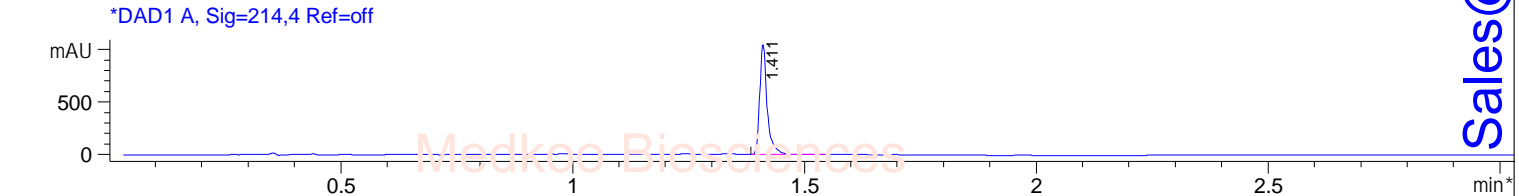
Column: Sunfire C18, 4.6*50mm, 3.5um

Column Temperature: 45 C

Detection: UV (214, 4nm) and MS (ESI, Pos mode, 110 to 1000 amu)

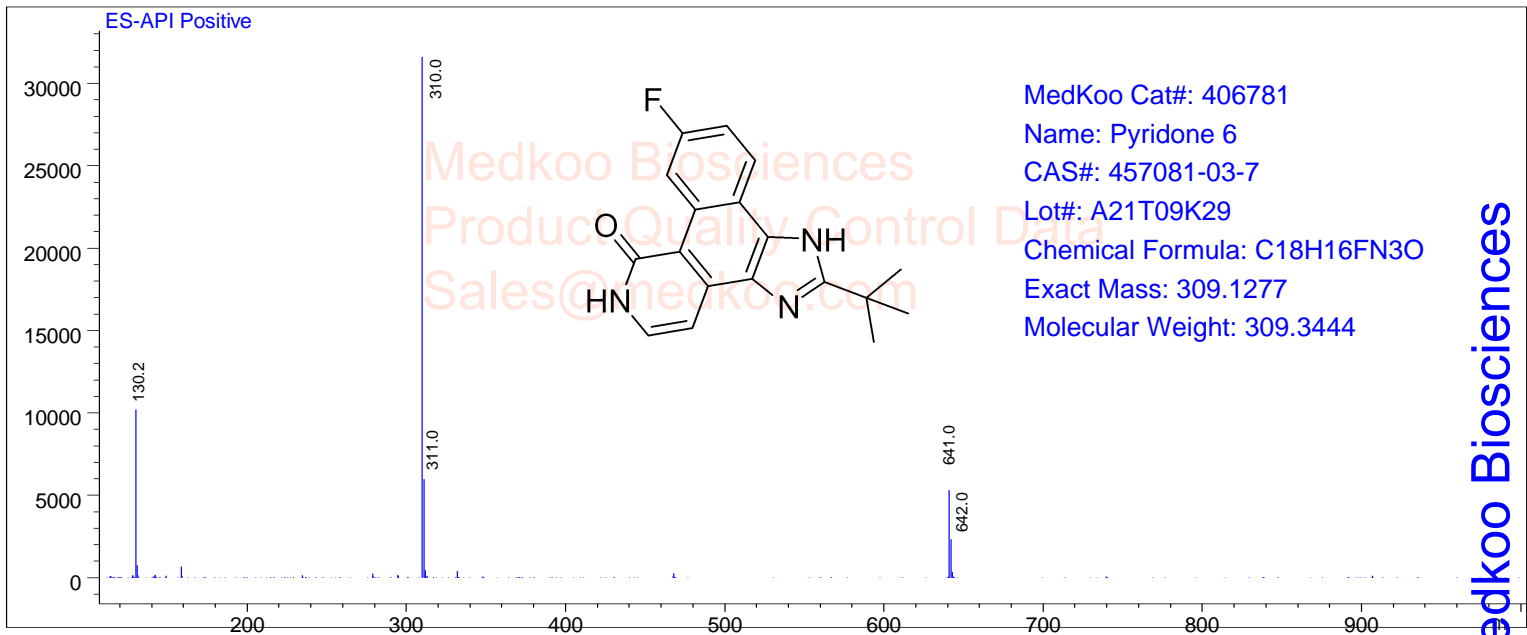
Sales@medkoo.com

www.medkoo.com



Ret. Time: 1.41

<<<< POSITIVE SPECTRA >>>>



Medkoo Biosciences