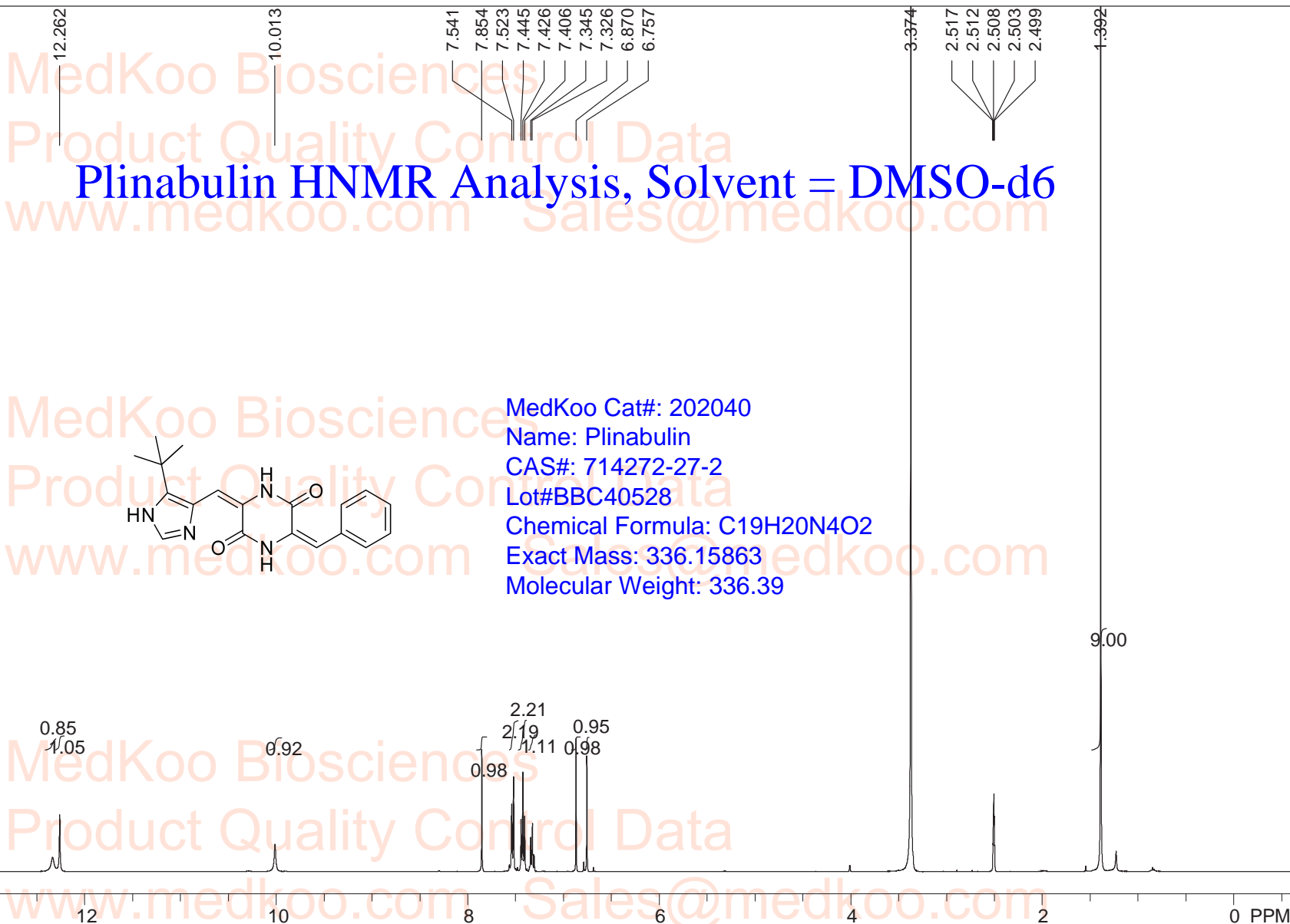


Plinabulin HNMR Analysis, Solvent = DMSO-d6



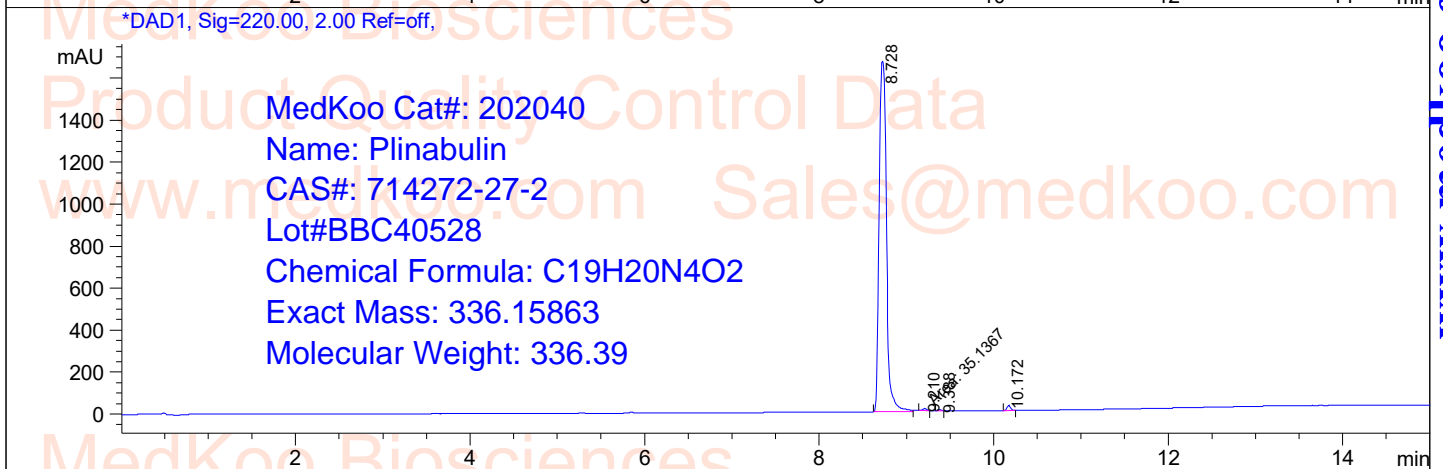
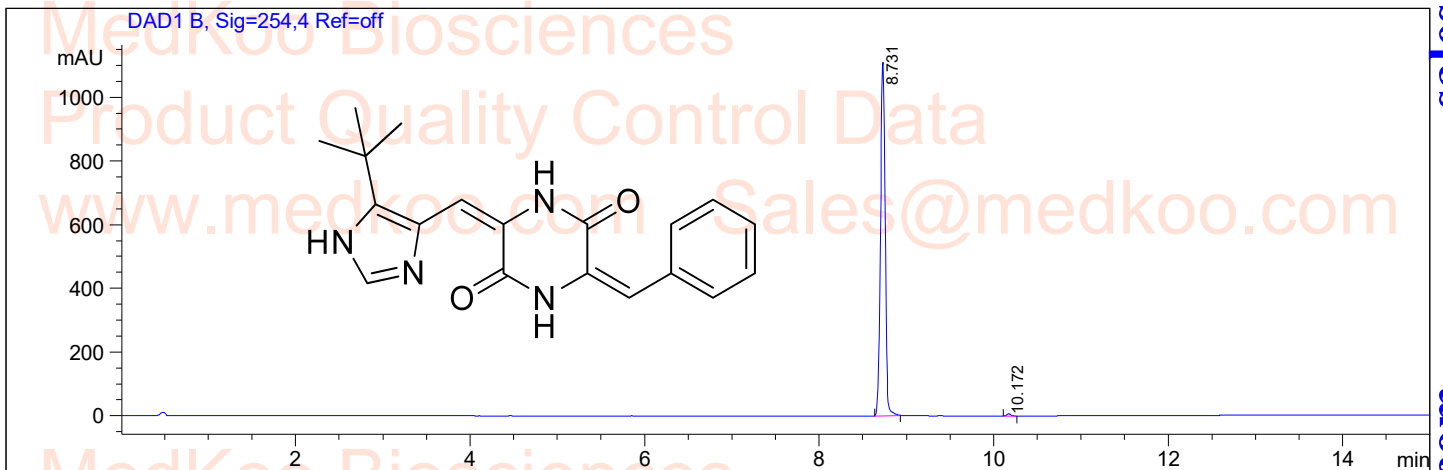
MedKoo Cat#: 202040
 Name: Plinabulin
 CAS#: 714272-27-2
 Lot#BBC40528
 Chemical Formula: C₁₉H₂₀N₄O₂
 Exact Mass: 336.15863
 Molecular Weight: 336.39



spect, DMSO,				USER: root -- DATE: Wed May 28 05:32:42 2014			
F1: 400.132	F2: 1.000	SW1: 8013		OF1: 2471.0		PTS1d: 65536	
EX: zg30		PW: 14.8 usec	PD: 1.0 sec	NA: 16	LB: 0.0		Nuts - \$pdata

Plinabulin HPLC Analysis

Sample Name : s **Seq. Line** : 0
Acq. Operator : 8 **Location** : P1-B-05
Spec. Reported : Integration **Inj** : 0
Acq. Method : D:\Chem32\1.M **Inj Volume** : 2.5 ul
Analysis Method : D:\CHEM32\1.M
Sample Info : Easy-Access Method: '1.M'
Method Info : Method Info : Instrument :HPLC-03



Integration Results for DAD1 B, Sig=254,4 Ref=off

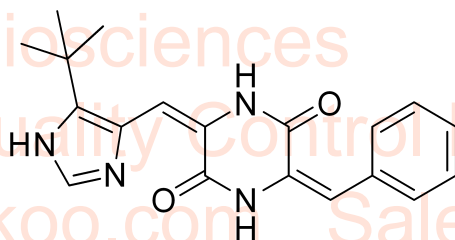
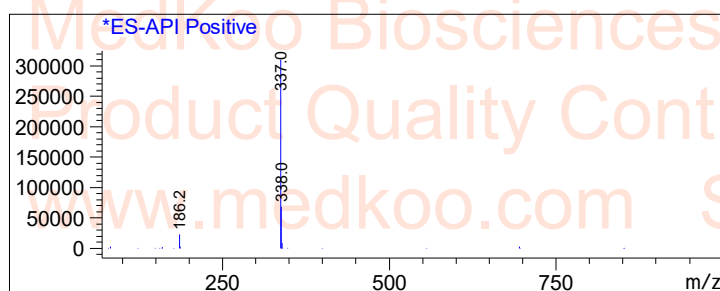
RetTim	Width	Area	Height	Area%
8.73	0.06	4158.25	1114.64	98.16
10.17	0.05	22.71	20.57	1.84

Integration Results for DAD1, Sig=220.00, 2.00 Ref=off, EXT

RetTim	Width	Area	Height	Area%
8.73	0.09	9767.68	1667.97	98.72
9.21	0.06	35.14	10.21	0.36
9.39	0.05	15.54	5.37	0.16
10.17	0.05	75.85	25.35	0.77

Plinabulin MS Analysis

Sample Name	: A	Tgt Mass(EZX)	:
Acq. Operator	: 8	Location	: P2-D-07
Spec. Reported	: MS	Inj	: 0
Acq. Method	: D:\Chem32.M	Inj Volume	: 1.8 ul
Analysis Method	: D:\CHEM32.M		
Sample Info	: Easy-Access Method: '1.M'		



MedKoo Cat#: 202040

Name: Plinabulin

CAS#: 714272-27-2

Lot#BBC40528

Chemical Formula: C₁₉H₂₀N₄O₂

Exact Mass: 336.15863

Molecular Weight: 336.39