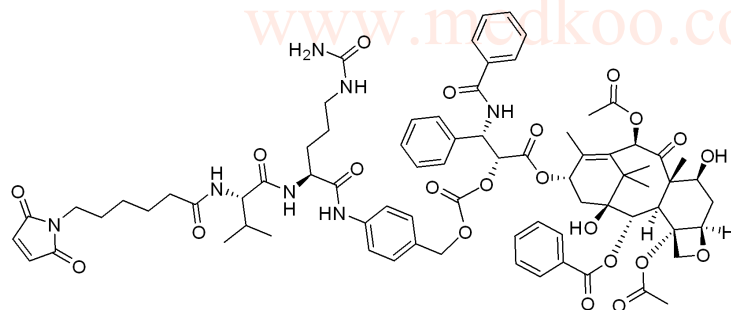


# Paclitaxel-MVCP HNMR Analysis, solvent = DMSO-d6

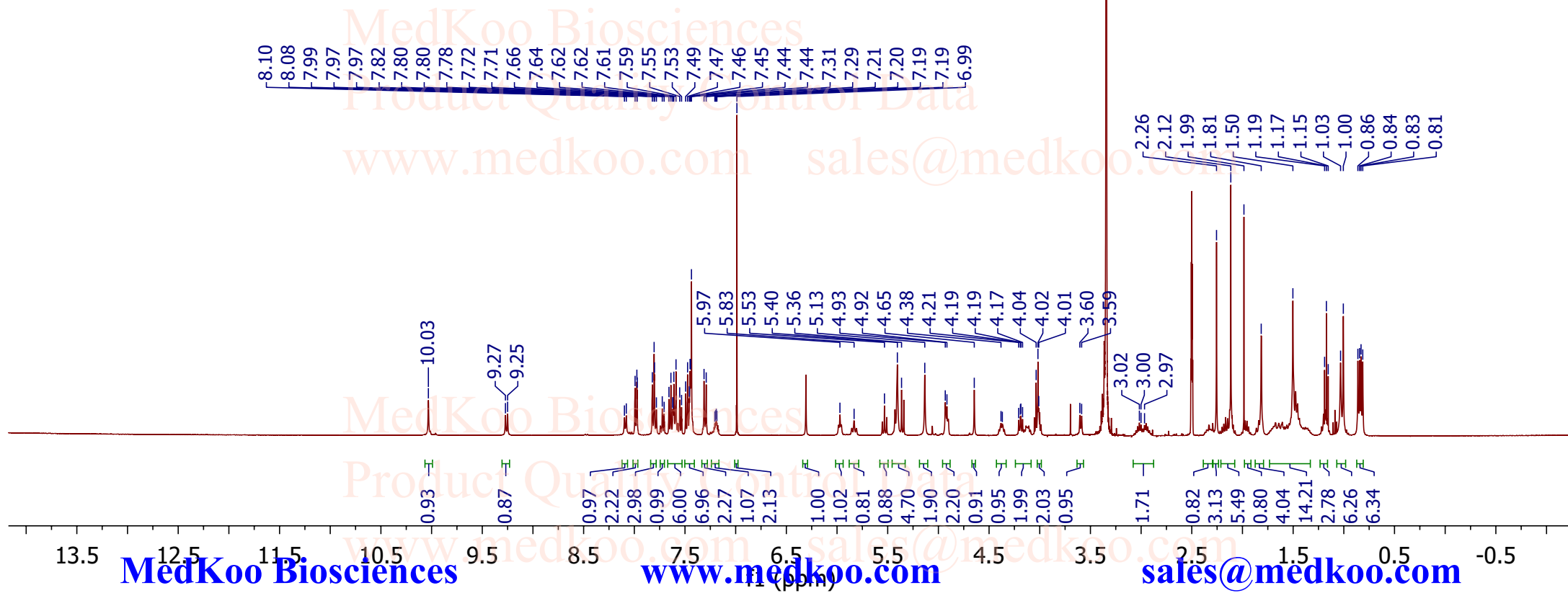
MedKoo Biosciences

Product Quality Control Data

www.medkoo.com sales@medkoo.com



MedKoo Cat#: 620102  
Name: Paclitaxel-MVCP  
CAS#: Unknown  
Lot# YXM71017  
Chemical Formula: C76H89N7O22  
Exact Mass: 1451.6061  
Molecular Weight: 1452.58



MedKoo Biosciences

www.medkoo.com

sales@medkoo.com

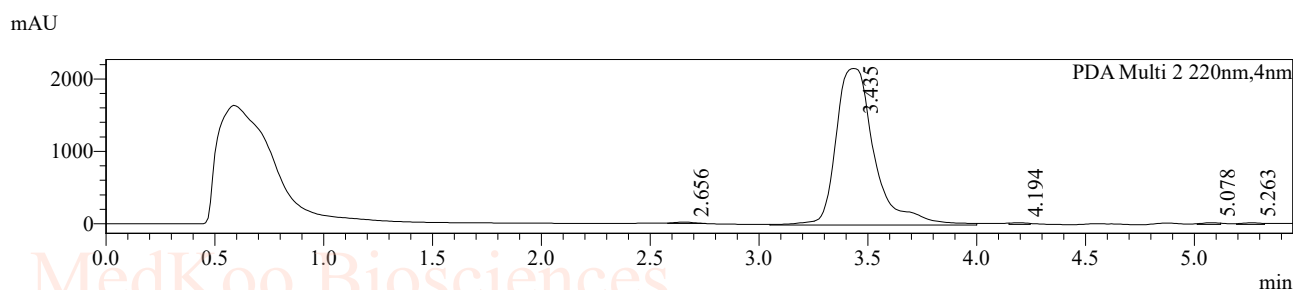
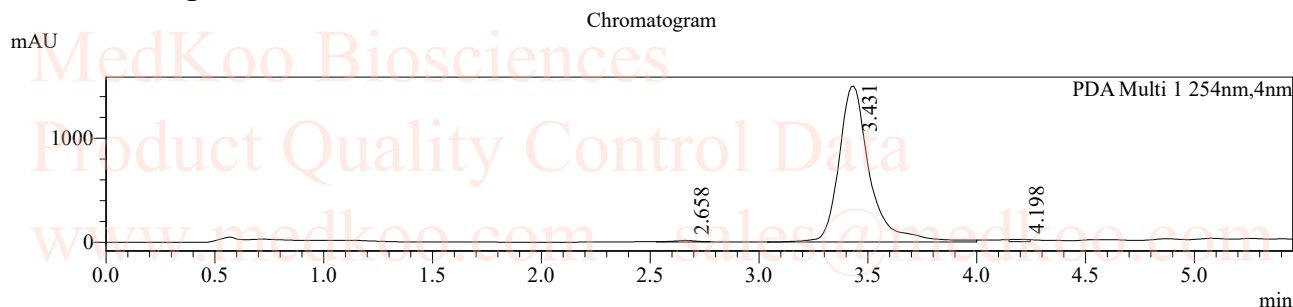
# Paclitaxel-MVCP HPLC Analysis

## <Sample Information>

Sample Name : Paclitaxel MVCP  
 Sample ID :  
 Data Filename : Paclitaxel MVCP1.lcd

Batch Filename :  
 Vial # : 1-155  
 Injection Volume : 10 uL

## <Chromatogram>



Peak Table

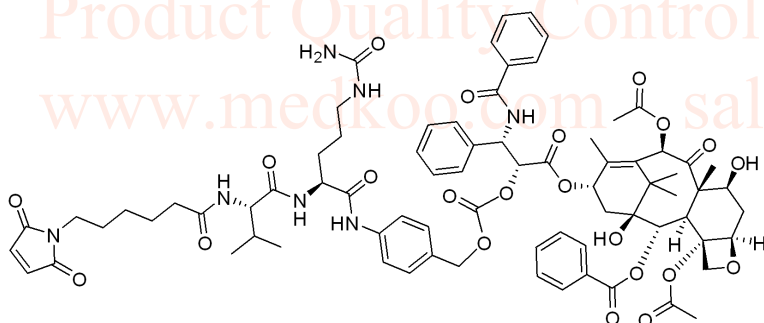
PDA Ch1 254nm

Peak#	Peak Start	Peak End	Ret. Time	Area	Height	Area%
1	2.528	2.773	2.658	96701	13213	0.647
2	3.040	4.000	3.431	14715665	1498341	98.516
3	4.149	4.245	4.198	124977	23377	0.837
Total				14937343	1534930	100.000

Peak Table

PDA Ch2 220nm

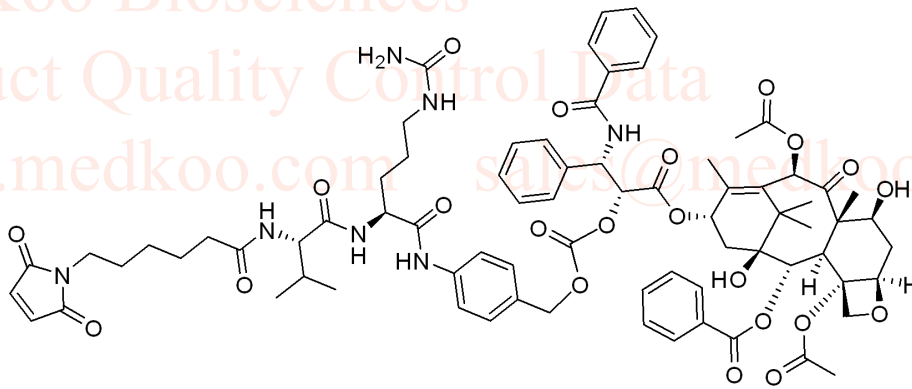
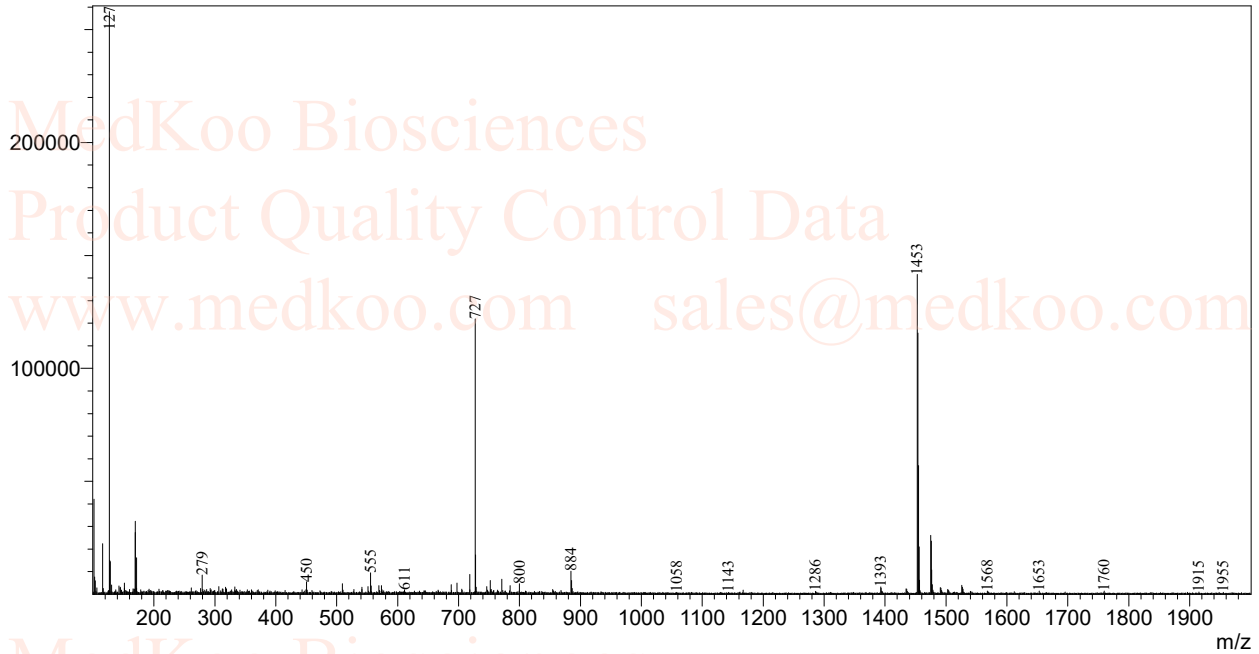
Peak#	Peak Start	Peak End	Ret. Time	Area	Height	Area%
1	2.581	2.752	2.656	114030	19617	0.423
2	3.051	4.000	3.435	26475849	2162557	98.126
3	4.149	4.245	4.194	115977	23098	0.430
4	5.013	5.120	5.078	133716	25260	0.496
5	5.195	5.323	5.263	142026	22111	0.526
Total				26981598	2252642	100.000



MedKoo Cat#: 620102  
 Name: Paclitaxel-MVCP  
 CAS#: Unknown  
 Lot# YXM71017  
 Chemical Formula: C76H89N7O22  
 Exact Mass: 1451.6061  
 Molecular Weight: 1452.58

# Paclitaxel-MVCP MS analysis

Line#:1 R.Time:----(Scan#:----)  
MassPeaks:1901  
RawMode:Averaged 3.267-4.200(197-253) BasePeak:127(257929)  
BG Mode:None Segment 1 - Event 1



MedKoo Cat#: 620102  
Name: Paclitaxel-MVCP  
CAS#: Unknown  
Lot# YXM71017  
Chemical Formula: C<sub>76</sub>H<sub>89</sub>N<sub>7</sub>O<sub>22</sub>  
Exact Mass: 1451.6061  
Molecular Weight: 1452.58