

# PSMA I&T HPLC Analysis

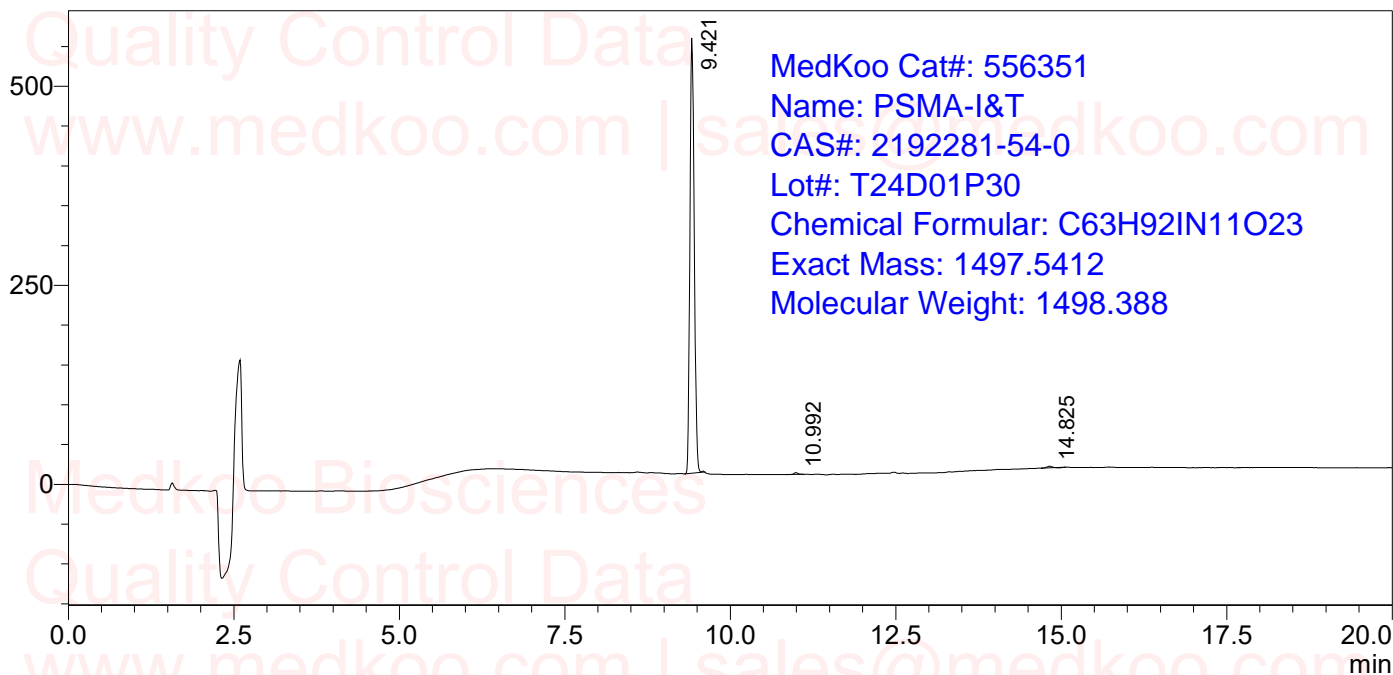
Sample Name : PSMA-I&T 2192281-54-0  
 Vial# : 1-16

Injection Volume : 20 uL

Data Filename : D:\DATA\PSMA-I&T 2192281-54-0.lcd  
 Method Filename : C:\LabSolutions\Data\Project1\DUOTAI-2.lcm

FLOW RATE: 1ML/MIN  
 COLUMN: KROMASIL 100-5-C8 150\*4.6MM 5UM  
 COLUME TEMPERATURE: 25  
 GRADIENT PROGRAMME:  
 TIME(MIN) MOBILE PHASE-A(H2O+0.1%CF3COOH) MOBILE PHASE-B(CH3CN+0.1%CF3COOH)  
 0 90 10  
 10 40 60  
 20 40 60

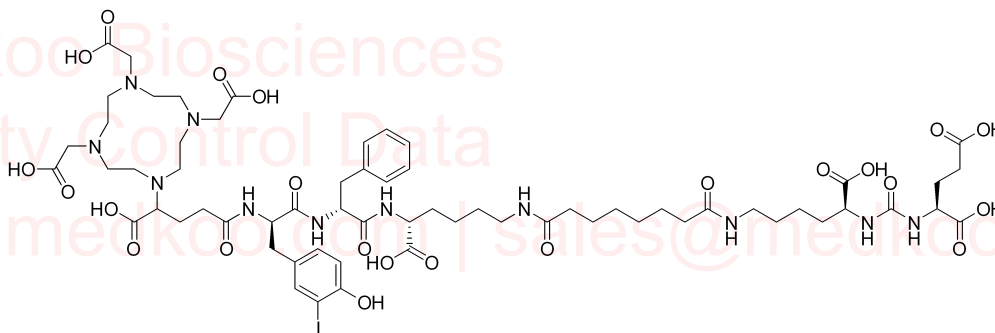
mAU



MedKoo Cat#: 556351  
 Name: PSMA-I&T  
 CAS#: 2192281-54-0  
 Lot#: T24D01P30  
 Chemical Formular: C63H92IN11O23  
 Exact Mass: 1497.5412  
 Molecular Weight: 1498.388

PDA Ch1 220nm

Peak#	Ret. Time	Height	Height%	Area	Area%
1	9.421	546721	99.255	2488403	99.295
2	10.992	2144	0.389	9116	0.364
3	14.825	1962	0.356	8560	0.342
总计		550827	100.000	2506080	100.000



sales@medkoo.com

www.medkoo.com

MedKoo Biosciences

# PSMA I & T MS Analysis

Sample Name : PSMA-I&T 2192281-54-0  
Acquired by : System Administrator  
Sample Type : Unknown  
Tray# : 1  
Vial# : 16  
Injection Volume : 20  
Data File : PSMA-I&T 2192281-54-0.lcd  
Method File : DUOTAI-2.lcm  
Processed by : System Administrator

MedKoo Biosciences  
Quality Control Data  
www.medkoo.com | sales@medkoo.com

