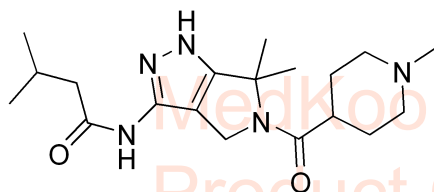


PHA-793887 HNMR Analysis, Solvent = DMSO

—12.301

—10.394



MedKoo Cat#: 206024
 Name: PHA-793887
 CAS#: 718630-59-2 (free base)
 Lot#: BBC61102
 Chemical Formula: C₁₉H₃₁N₅O₂
 Exact Mass: 361.24778
 Molecular Weight: 361.48

4.649
 3.361
 2.870
 2.842
 2.507
 2.348
 2.338
 2.324
 2.210
 2.163
 2.145
 2.059
 2.042
 2.025
 2.007
 1.998
 1.977
 1.626
 1.239



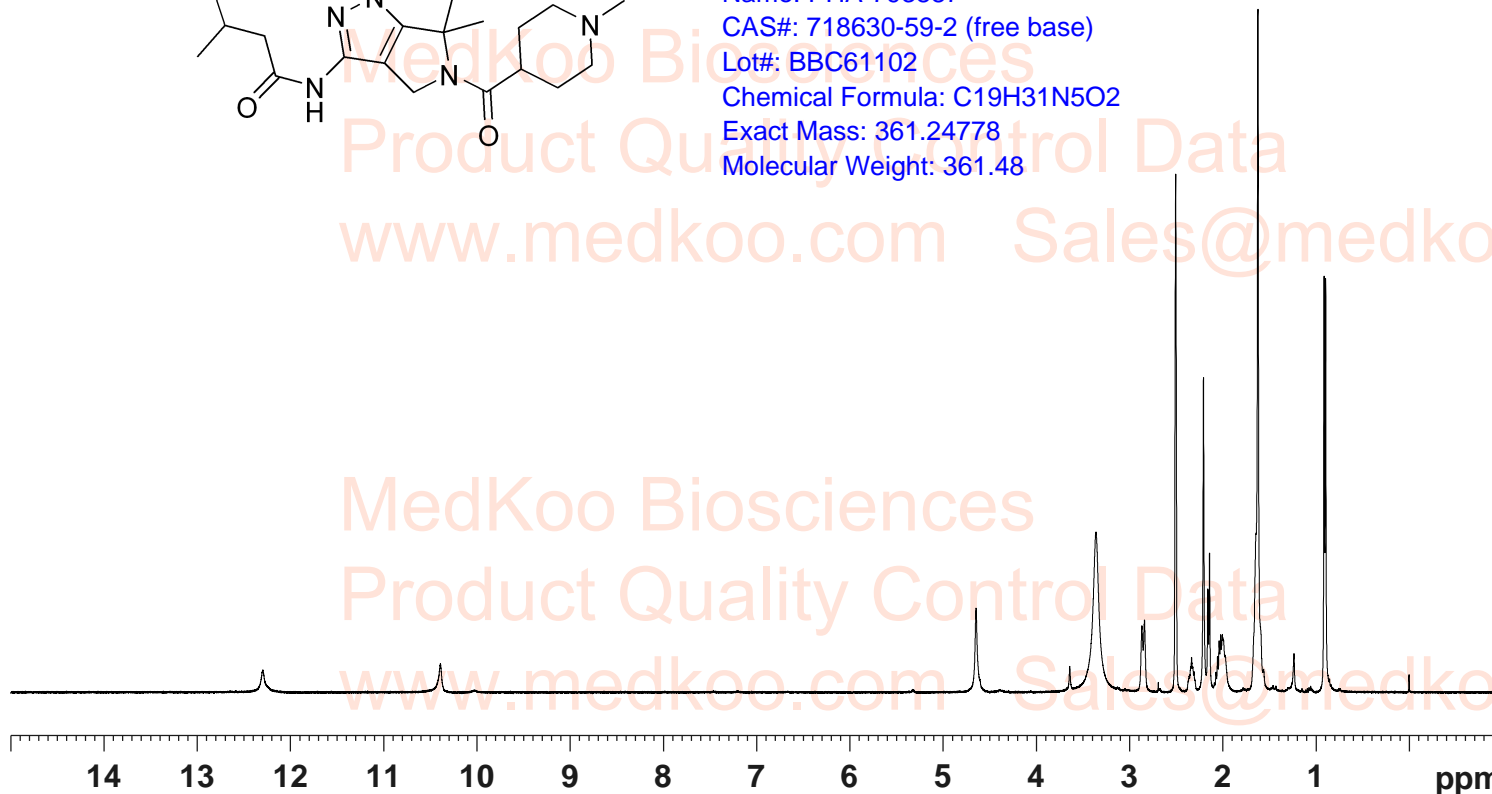
Current Data Parameters
 NAME PHA-793887
 EXPNO 10
 PROCNO 1

F2 - Acquisition Parameters

INSTRUM spect
 PROBHD 5 mm PABBO BB-
 PULPROG zg30
 TD 65536
 SOLVENT DMSO
 NS 16
 DS 2
 SWH 8012.820 Hz
 FIDRES 0.122266 Hz
 AQ 4.0894465 sec
 RG 161
 DW 62.400 usec
 DE 6.50 usec
 TE 296.5 K
 D1 1.00000000 sec
 TD0 1

==== CHANNEL f1 =====
 SF01 400.1324710 MHz
 NUC1 1H
 P1 13.00 usec
 PLW1 19.00000000 W

F2 - Processing parameters
 SI 65536
 SF 400.1300000 MHz
 WDW no
 SSB 0
 LB 0 Hz
 GB 0
 PC 1.00



1.01

0.93

2.06

2.20

1.13

5.12

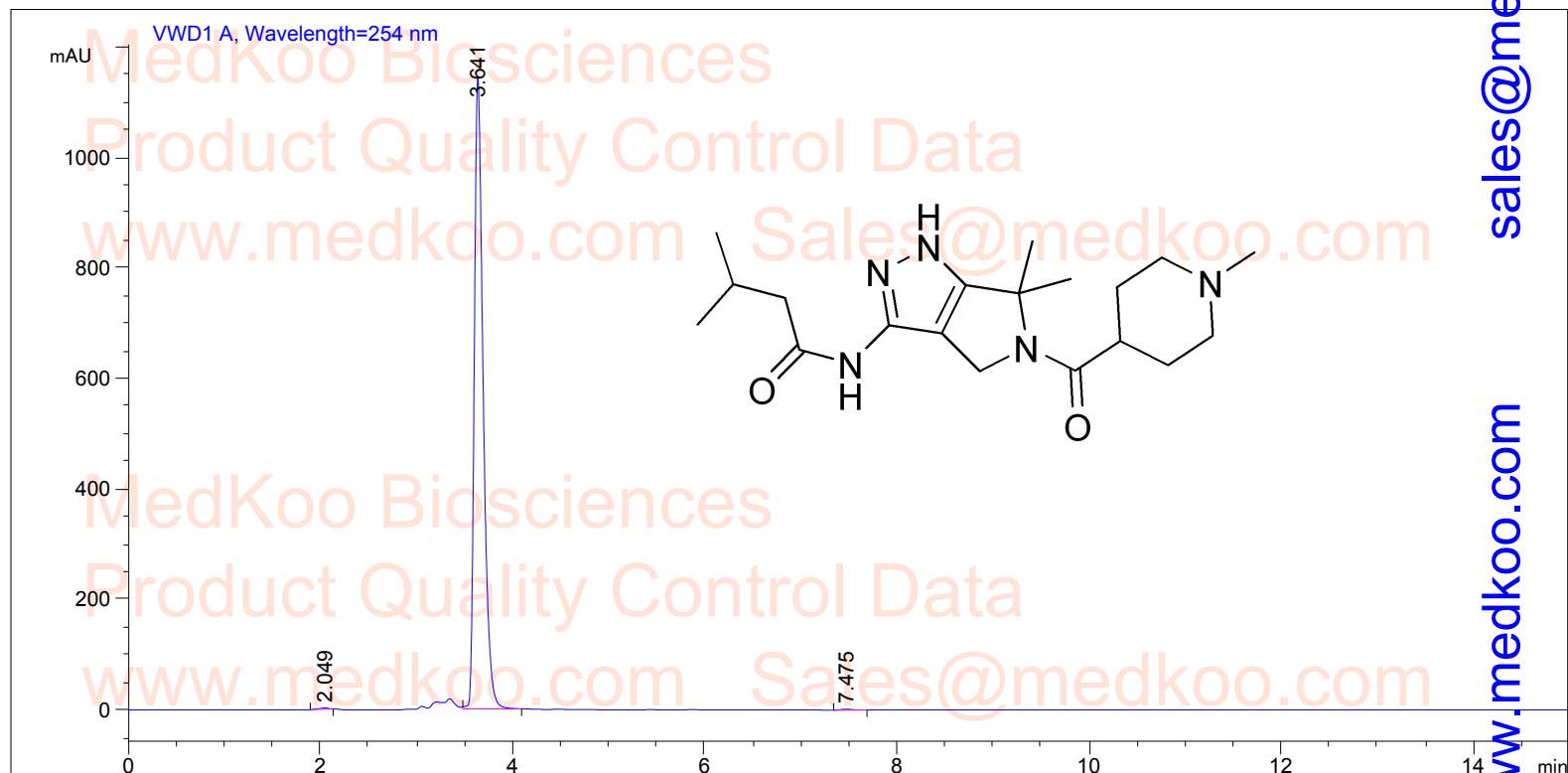
3.29

10.78

6.00

PHA-793887 HPLC Analysis

=====
Acq. Operator : System
Acq. Instrument : Instrument 1 Location : Vial 35
Sample Name : PHA-793887
Acq. Method : C:\CHEM32\1\METHODS\TEST-KR.M Inj Volume : 5.0 µl
Analysis Method : C:\CHEM32\1\METHODS\TEST-KR.M
=====



Area Percent Report

=====
Sorted By : Signal
Multiplier: : 1.0000
Dilution: : 1.0000
Use Multiplier & Dilution Factor with ISTDs

Signal 1: VWD1 A, Wavelength=254 nm

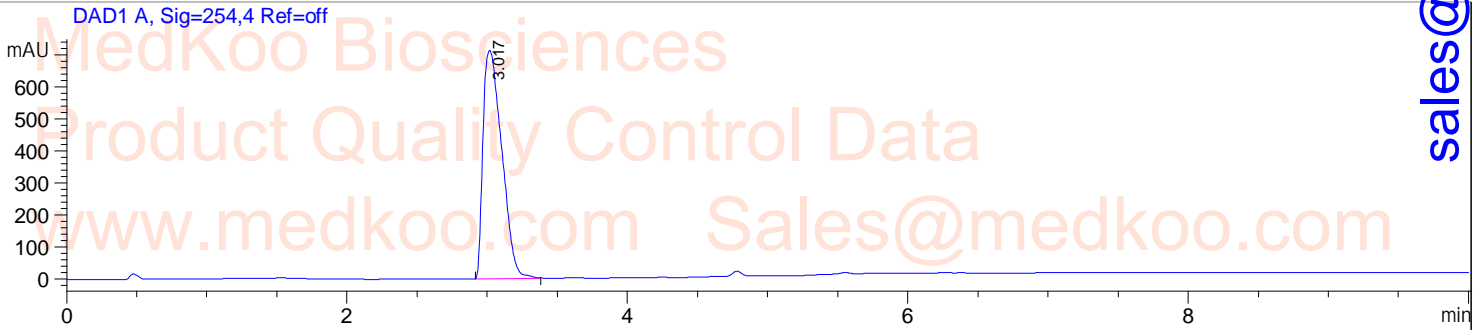
Peak #	RetTime [min]	Type	Width [min]	Area mAU	Height [mAU]	Area %
1	2.049	BV	0.0940	15.38119	2.39060	0.2081
2	3.641	BB	0.0968	7362.66016	1145.63953	99.6164
3	7.475	BB	0.1292	12.97312	1.55718	0.1755

Totals : 7391.01447 1149.58731

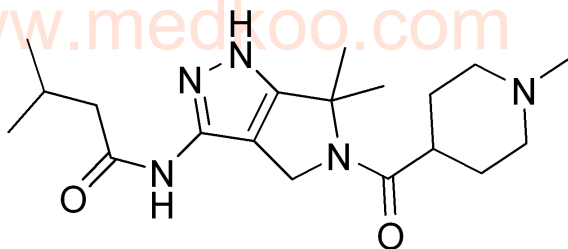
MedKoo Cat#: 206024
Name: PHA-793887
CAS#: 718630-59-2 (free base)
Lot#: BBC61102
Chemical Formula: C₁₉H₃₁N₅O₂
Exact Mass: 361.24778
Molecular Weight: 361.48

PHA-793887 LC/MS Analysis

Sample Name : PHA-793887 Tgt Mass(EZX) :
Acq. Operator : [BSB3] Location : Vial 72
Spec. Reported : MS Integration Inj : 1
Acq. Method : C:\Chem32\1\METHODS\TEST KR POS_LC.M Inj Volume : 5 ul
Analysis Method : C:\CHEM32\1\METHODS\TEST KR NEG_LC.M



Ret. Time: 3.18 <<<< POSITIVE SPECTRA >>>>



MedKoo Cat#: 206024
Name: PHA-793887
CAS#: 718630-59-2 (free base)
Lot#: BBC61102
Chemical Formula: C₁₉H₃₁N₅O₂
Exact Mass: 361.24778
Molecular Weight: 361.48

sales@medkoo.com

www.medkoo.com

MedKoo Biosciences