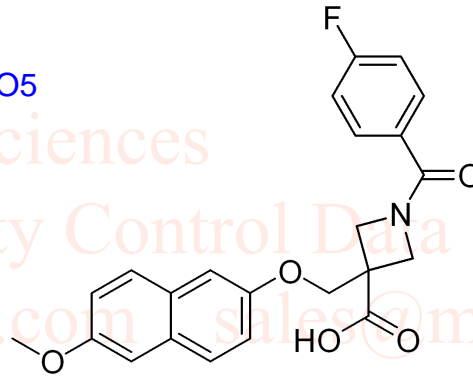


PF04418948 HNMR Analysis, Solvent: DMSO

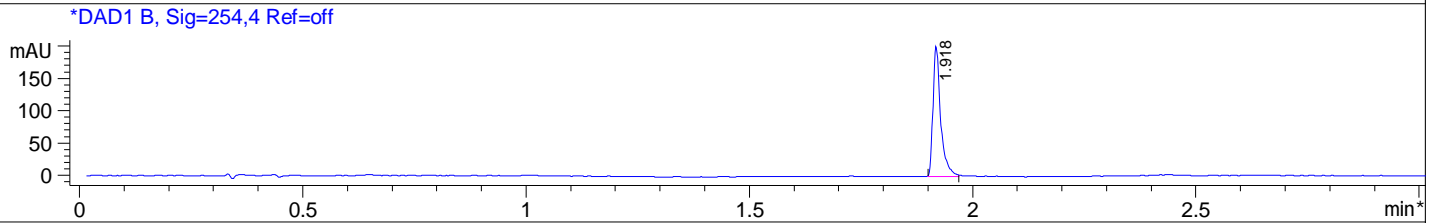
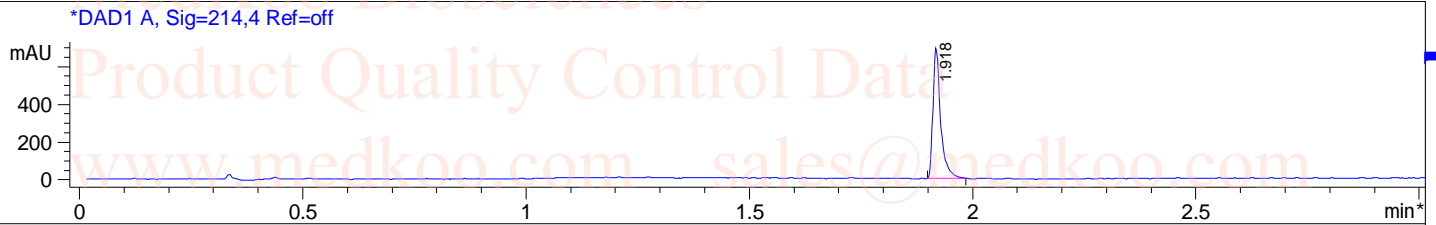
MedKoo Cat#: 522468
 Name: PF04418948
 CAS#: 1078166-57-0
 Lot#: B9B01C16
 Chemical Formula: C₂₃H₂₀FNO₅
 Exact Mass: 409.13255
 Molecular Weight: 409.41



DMSO,		Product Quality Control Data		Product Quality Control Data		Product Quality Control Data	
F1: 400.132	F2: 1.000	SW1: 8224	PD: 1.0 sec	OF1: 2468.5	NA: 8	PTS1d: 65536	Nuts - \$pdata
EX: zg30		PW: 15.0 usec		LB: 0.0			

PF04418948 HPLC Analysis

Sample Name : PF04418948
Analysis Method : D:\METHODS\1-POS-3MIN.M
Sample Info : Easy-Access Method: '1-POS-3MIN'
Method Info : Mobile Phase : A:water(0.01%TFA) B:ACN(0.01%TFA)
Gradient:5%B for 0.2min,increase to 95%B within 1.5min,95%B for 1.5min,back within 0.01min
Flow Rate :2ml/min
Column :Sunfire, 50*4.6mm,3.5um
Column Temperature:50C

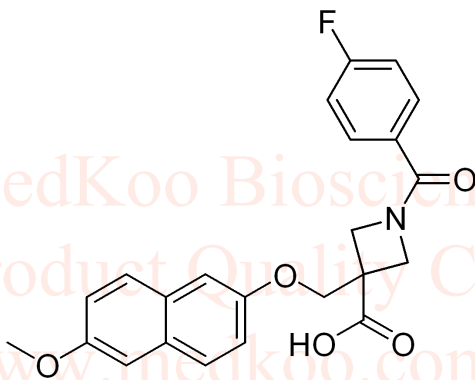


Integration Results for DAD1 A, Sig=214,4 Ref=off

RetTim	Width	Area	Height	Area%
1.92	0.02	831.09	691.42	100.00

Integration Results for DAD1 B, Sig=254,4 Ref=off

RetTim	Width	Area	Height	Area%
1.92	0.02	240.00	201.24	100.00



MedKoo Cat#: 522468

Name: PF04418948

CAS#: 1078166-57-0

Lot#: B9B01C16

Chemical Formula: C₂₃H₂₀FNO₅

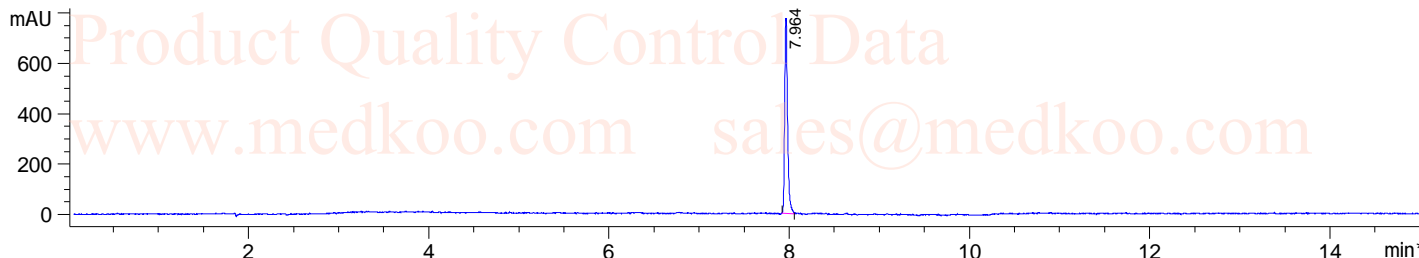
Exact Mass: 409.13255

Molecular Weight: 409.41

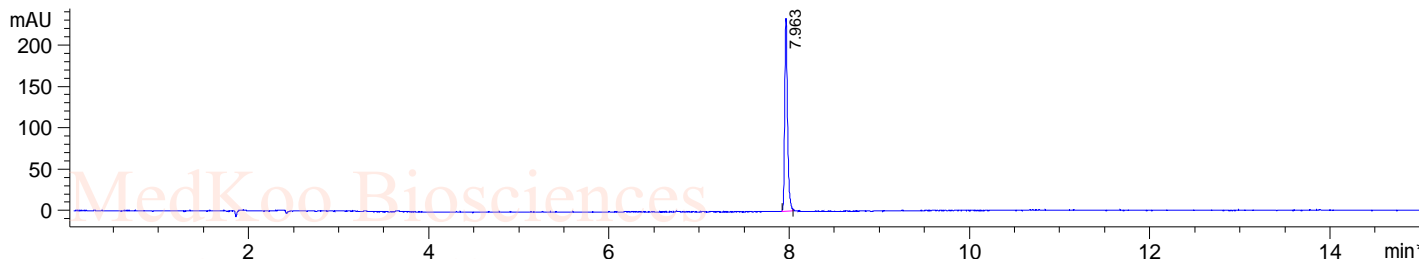
PF04418948 LC/MS Analysis

Sample Name : PF04418948
Acq. Method : D:\METHODS\2-POS-15MIN.M
Analysis Method : D:\METHODS\2-POS-15MIN.M
Sample Info : Easy-Access Method: '2-POS-15MIN'
Method Info : Mobile Phase : A:water(0.01%TFA) B:ACN(0.01%TFA)
GGradient
Time 0 7.5 15
B % 5 95 95
Flow Rate :1ml/min
Column :SUNFIRE, 150*4.6mm,3.5um

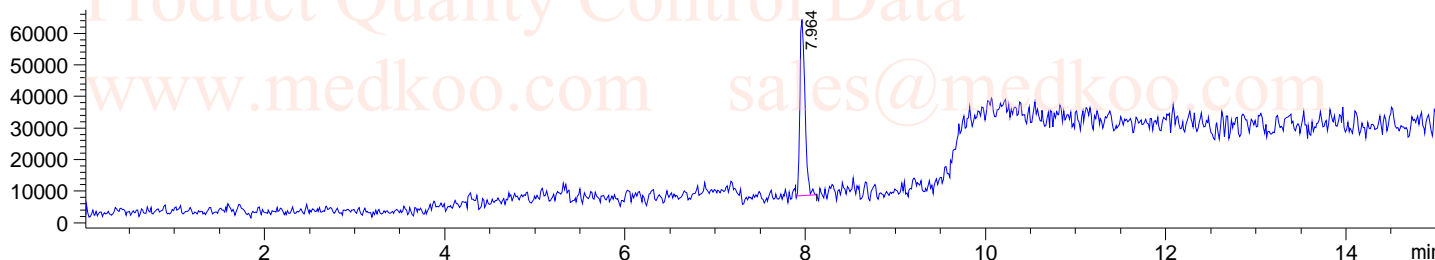
*DAD1 A, Sig=214,4 Ref=off



*DAD1 B, Sig=254,4 Ref=off



MSD1 TIC, MS File ES-API, Pos, Scan, Frag: 70



Ret. Time: 7.96

<<<< POSITIVE SPECTRA >>>>

ES-API Positive

