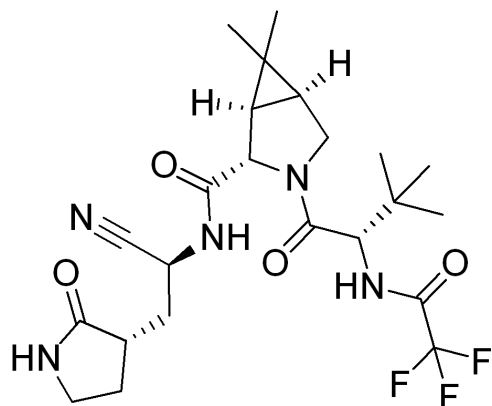


PF-07321332 HNMR Analysis, Solvent: DMSO



MedKoo Cat#: 555985

Name: PF-07321332

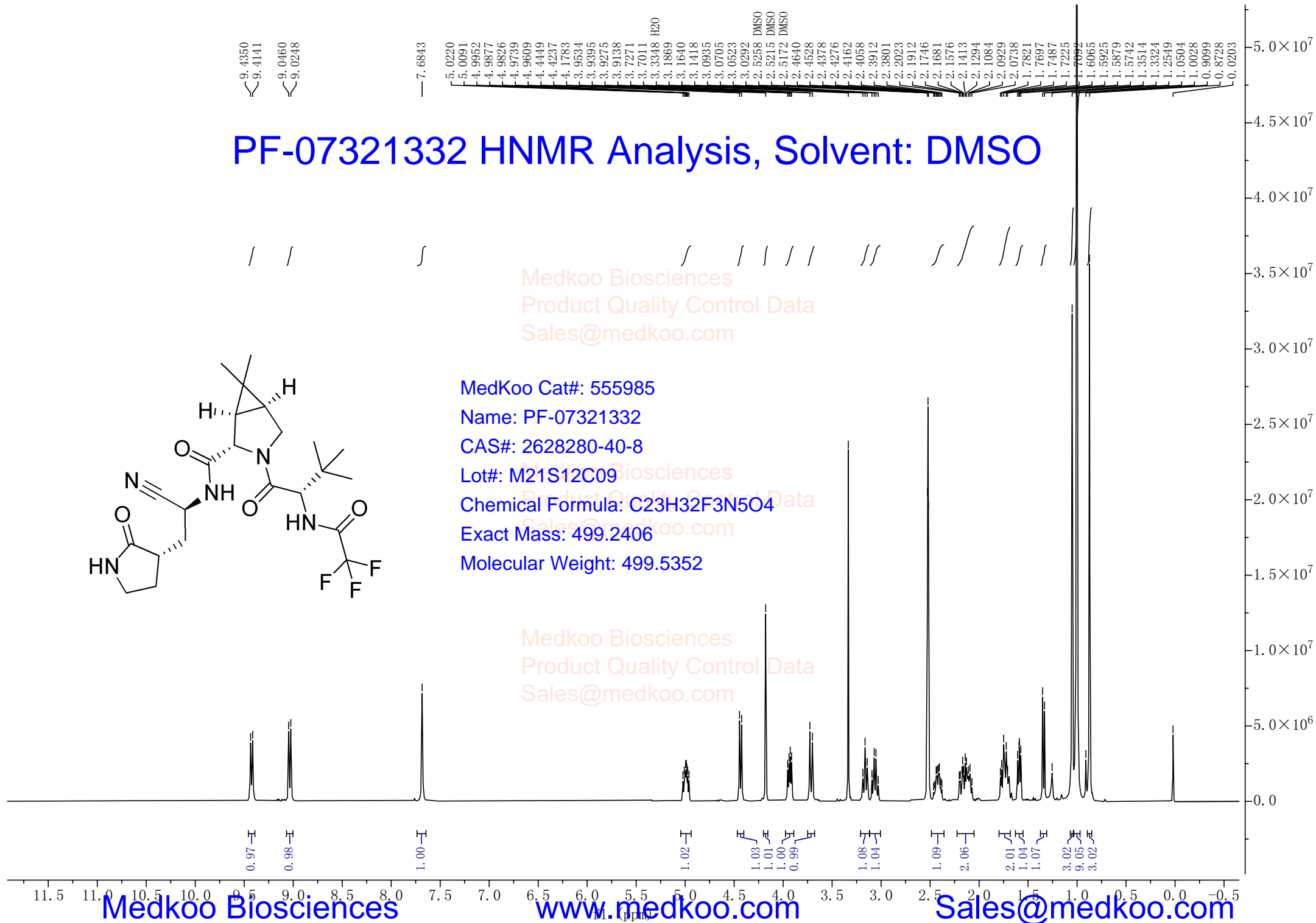
CAS#: 2628280-40-8

Lot#: M21S12C09

Chemical Formula: C₂₃H₃₂F₃N₅O₄

Exact Mass: 499.2406

Molecular Weight: 499.5352

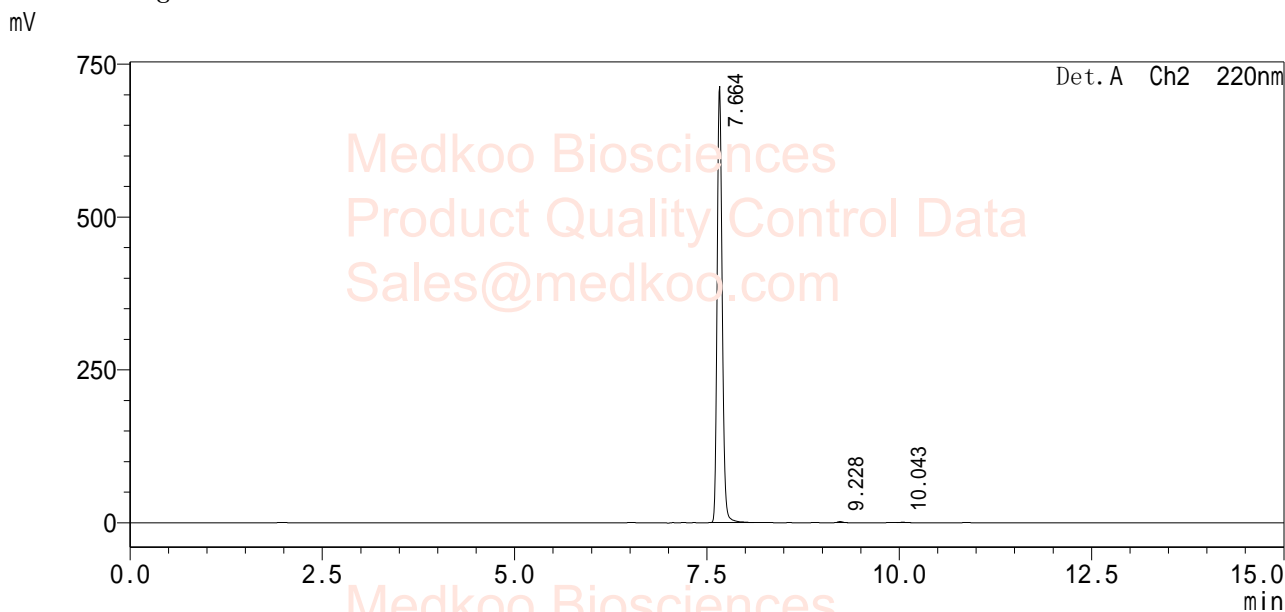


PF-07321332 HPLC Analysis

<Sample Information>

Sample Name : PF07321332-03
SampleID : 211104B015
Data File Name: 211104B015 FCW1102-03 .lcd
Vial# : 1-8
Inj. Volume : 1 μ L

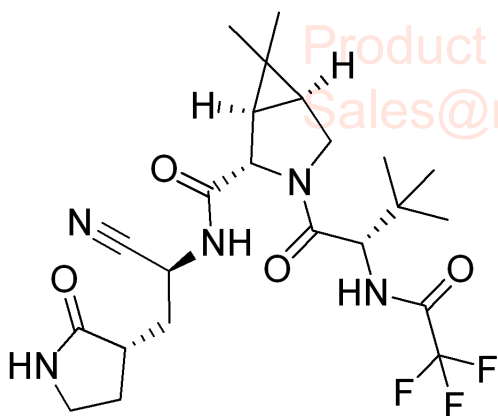
<Chromatogram>



<Peak Table>

Det. A Ch2 220nm

Peak	Ret. Time	Area	Height	Area%
1	7.664	3278542	715766	99.738
2	9.228	5374	1490	0.163
3	10.043	3239	706	0.099
Total		3287155	715766	100.000



MedKoo Cat#: 555985

Name: PF-07321332

CAS#: 2628280-40-8

Lot#: M21S12C09

Chemical Formula: C₂₃H₃₂F₃N₅O₄

Exact Mass: 499.2406

Molecular Weight: 499.5352

PF-07321332 LC/MS Analysis

Sample Name : ms

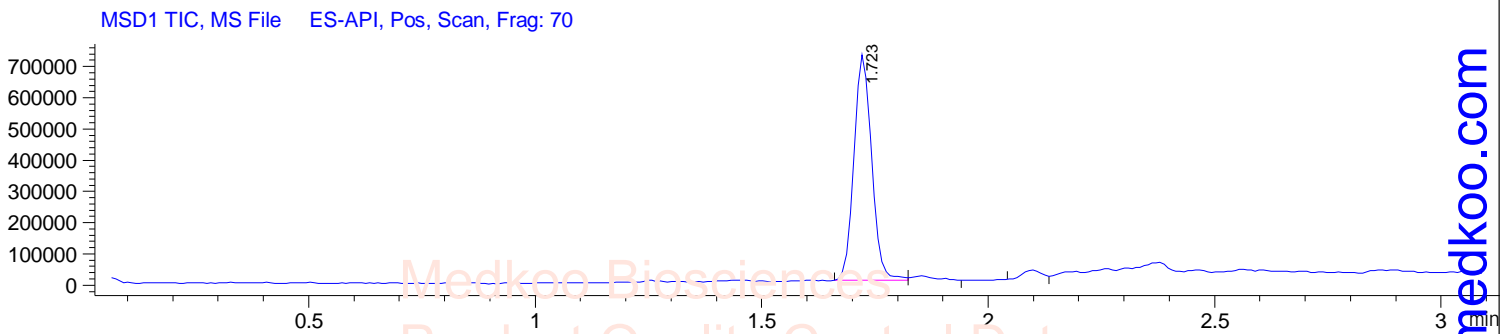
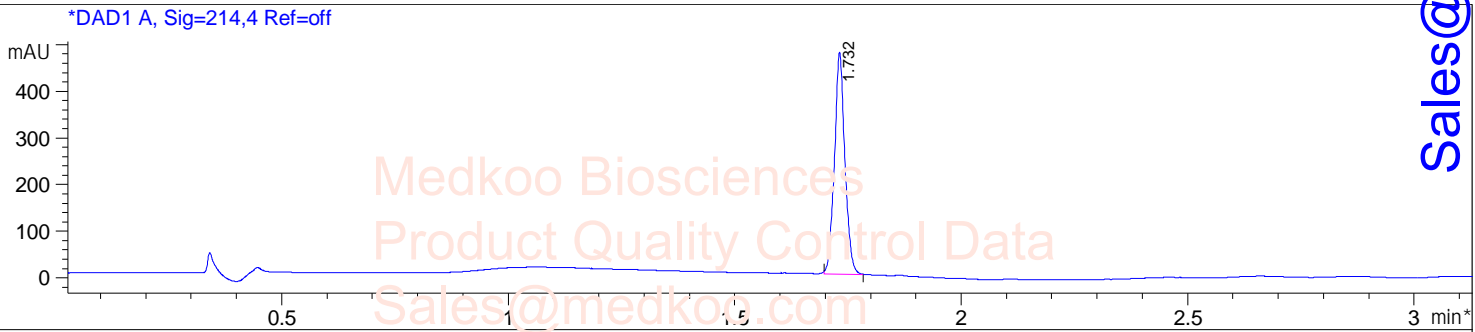
Method Info : Column:SunFire C18 (4.6x 50 mm,3.5 um)

Mobile phase: H₂O(0.01%TFA) (A) / ACN(0.01%TFA)(B)

Elution program: Gradient from 10 to95% of B in 1.4 min at 2ml/min

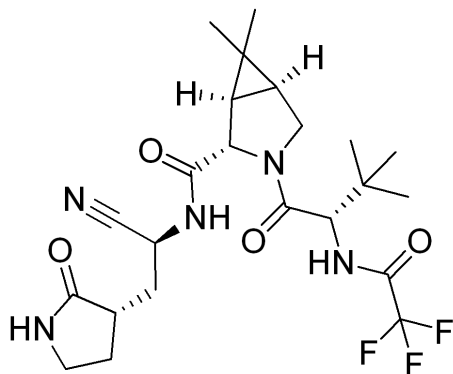
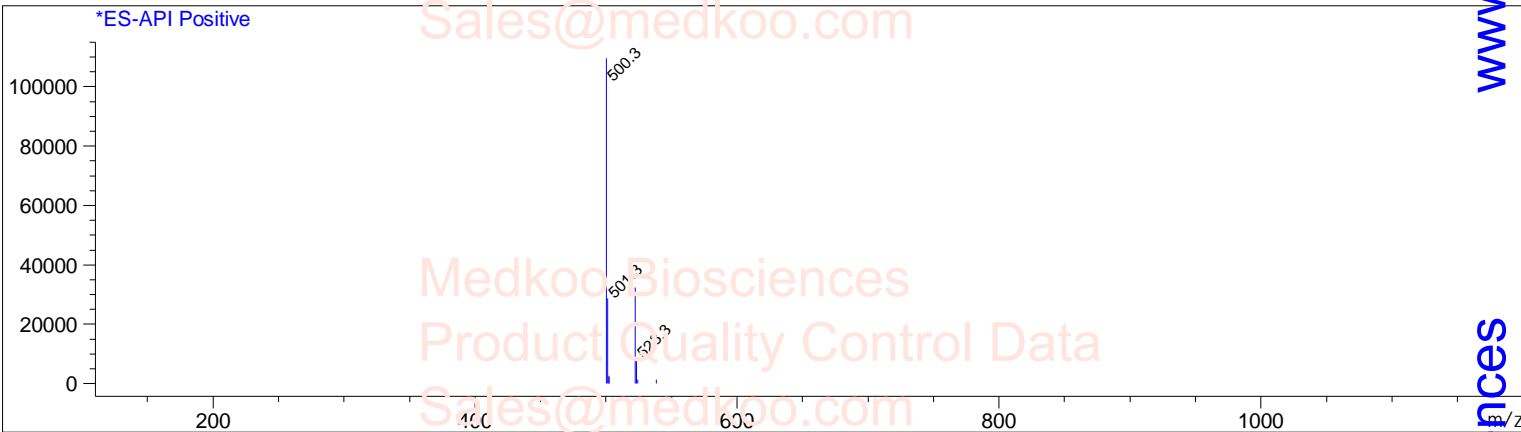
Temperature: 50 °C

Detection: UV (214 , 4 nm) and MS (ESI, Pos mode ,110 to 1000 amu)



Ret. Time: 1.72

<<<< POSITIVE SPECTRA >>>>



MedKoo Cat#: 555985

Name: PF-07321332

CAS#: 2628280-40-8

Lot#: M21S12C09

Chemical Formula: C₂₃H₃₂F₃N₅O₄

Exact Mass: 499.2406

Molecular Weight: 499.5352