

—12.863

7.605
7.598
7.583
7.576
7.349
7.231
7.223
7.217
7.208
7.114

5.910
5.905

—3.860

—3.332

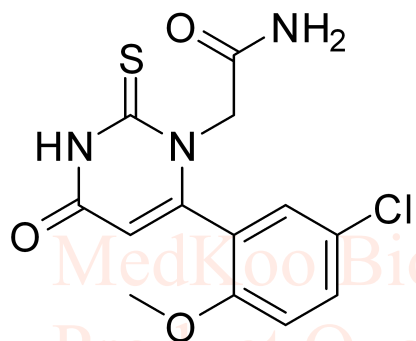
—2.517

—0.015

PF-06282999 HNMR Analysis Report

Product Quality Control Data

www.medkoo.com sales@medkoo.com



MedKoo Cat#: 522473

Name: PF-06282999

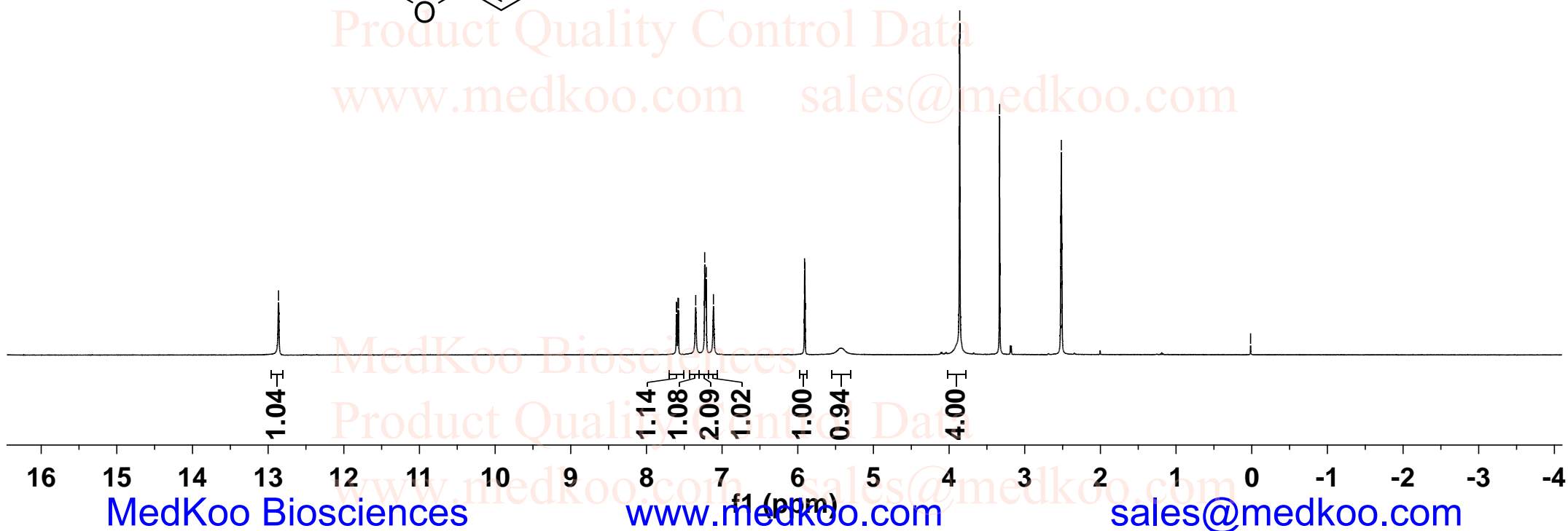
CAS#: 1435467-37-0

Lot#: A9T12K03

Chemical Formula: C₁₃H₁₂CIN₃O₃S

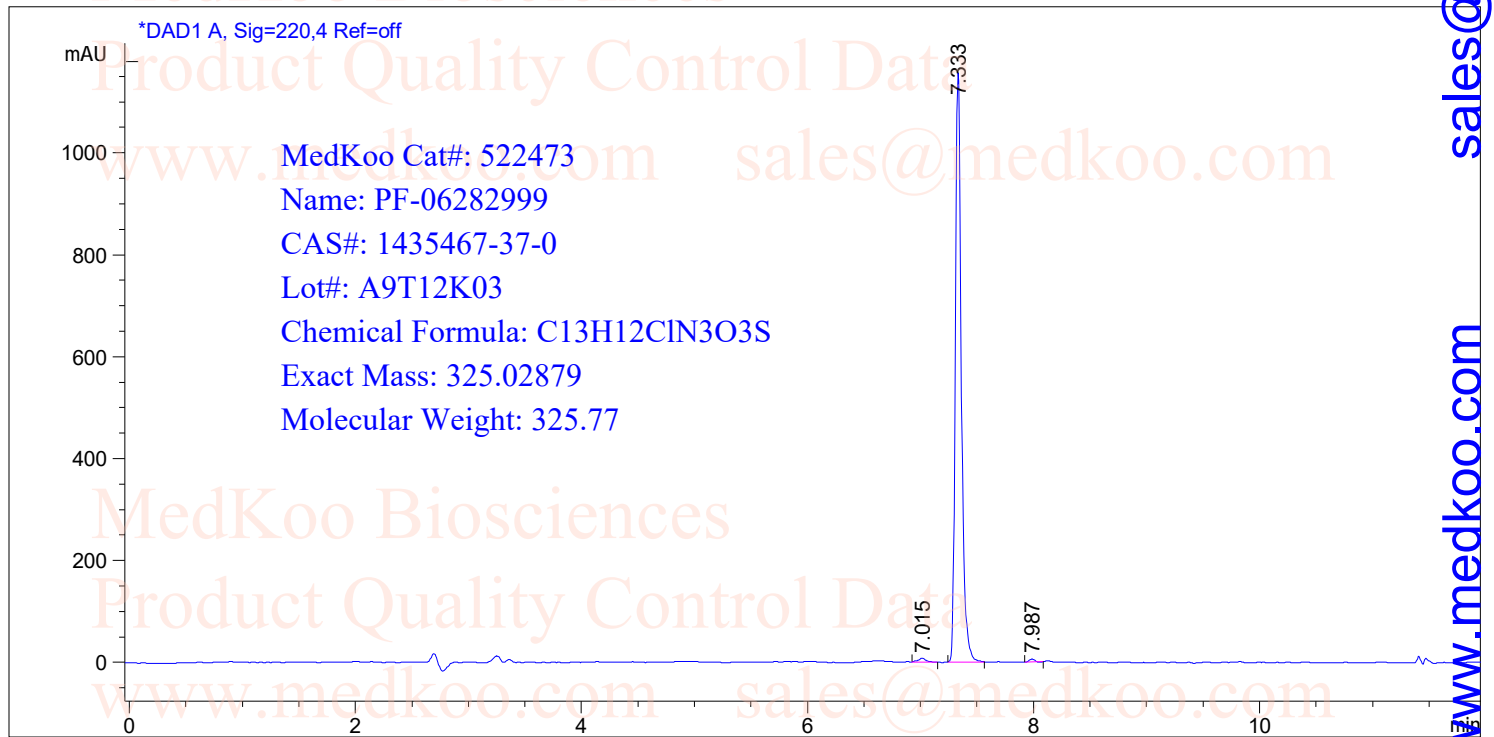
Exact Mass: 325.02879

Molecular Weight: 325.77



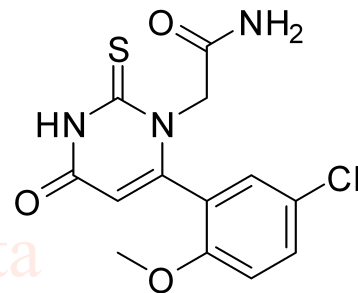
PF-06282999 HPLC Analysis Report

```
=====
Acq. Operator   : QC                      Seq. Line   :    4
Acq. Instrument : Instrument 1             Location    : Vial 41
                                                Inj         :    1
                                                Inj Volume  : 1 µl
Different Inj Volume from Sequence !      Actual Inj Volume : 2 µl
Acq. Method     : C:\Chem32\1\DATA\LC-12MIN-ACID2.M
Analysis Method : C:\CHEM32\1\DATA\LC-12MIN-ACID2.M
=====
```



Area Percent Report

```
Sorted By      :      Signal
Multiplier     :      1.0000
Dilution       :      1.0000
Use Multiplier & Dilution Factor with ISTDs
Signal 1: DAD1 A, Sig=220,4 Ref=off
```



Peak #	RetTime [min]	Type	Width [min]	Area [mAU*s]	Height [mAU]	Area %
1	7.015	BB	0.0674	36.30582	7.64025	0.8336
2	7.333	BB	0.0572	4301.45264	1161.98999	98.7690
3	7.987	BB	0.0475	17.30504	6.03374	0.3974

Totals : 4355.06350 1175.66398

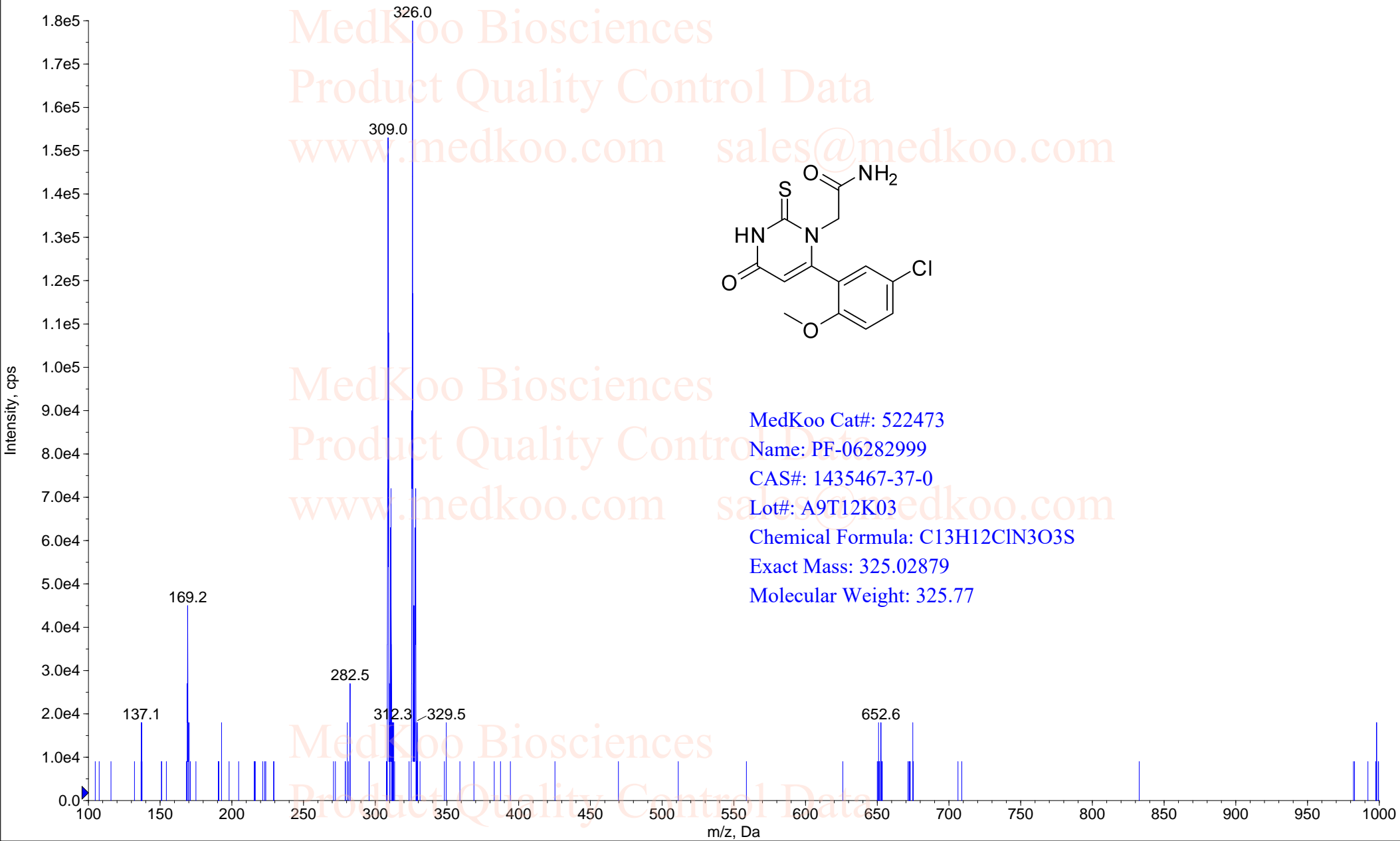
www.medkoo.com sales@medkoo.com

MedKoo Biosciences

PF-06282999 MS Analysis Report

+Q3: 3.502 min from Sample 1 (30030-1202) of 30030-1202.wiff (Turbo Spray)

Max. 1.8e5 cps.



MedKoo Cat#: 522473
Name: PF-06282999
CAS#: 1435467-37-0
Lot#: A9T12K03
Chemical Formula: C₁₃H₁₂ClN₃O₃S
Exact Mass: 325.02879
Molecular Weight: 325.77