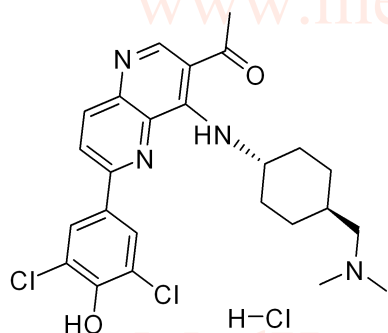
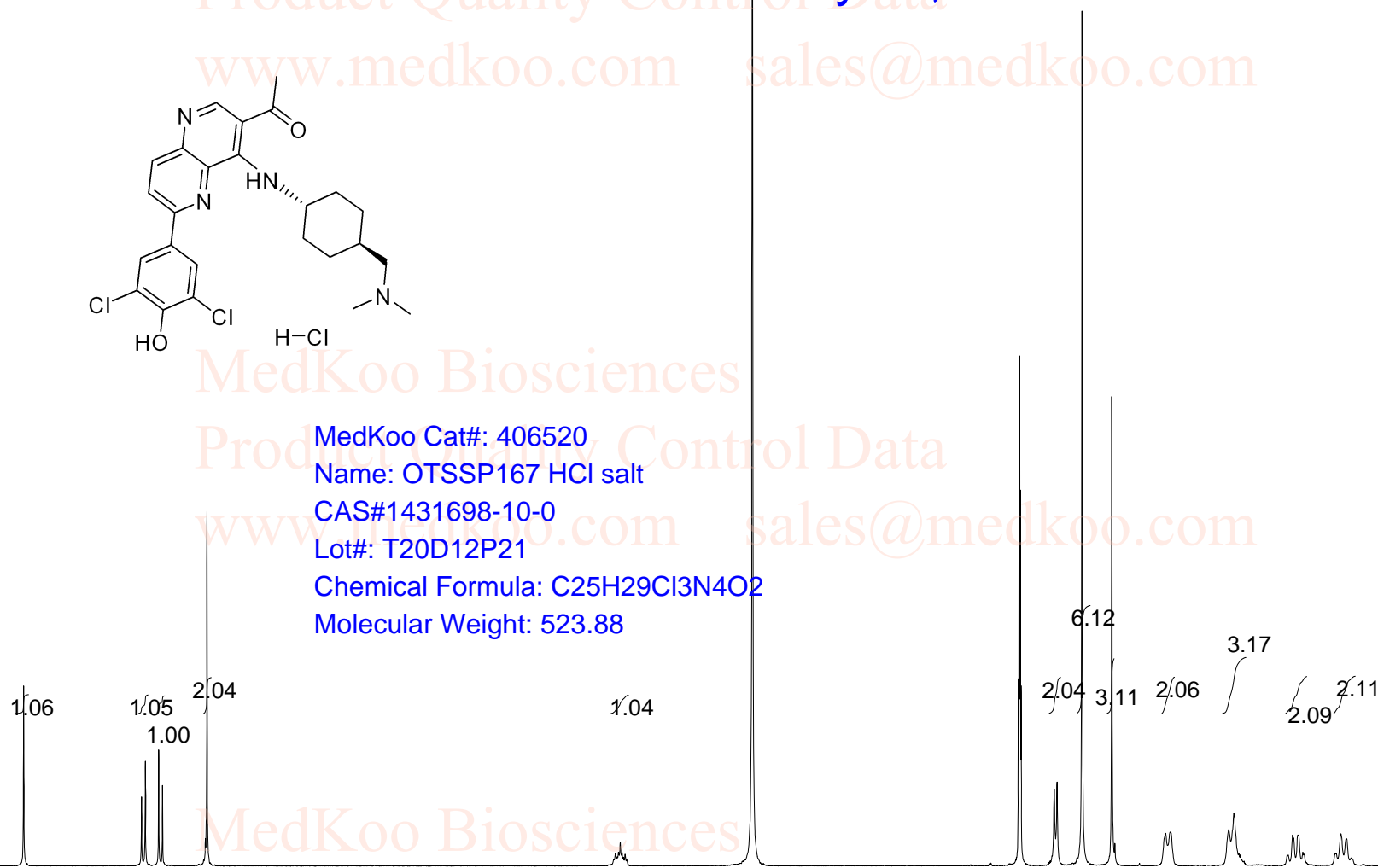
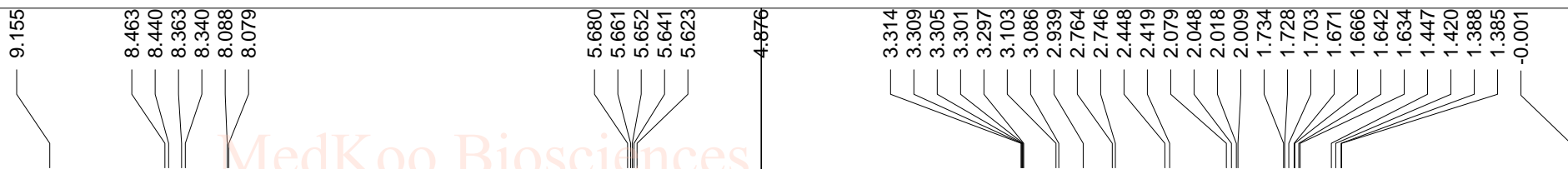


# OTSSP167 HCl HNMR Analysis, Solvent: MeOD



MedKoo Cat#: 406520  
 Name: OTSSP167 HCl salt  
 CAS#1431698-10-0  
 Lot#: T20D12P21  
 Chemical Formula: C<sub>25</sub>H<sub>29</sub>Cl<sub>3</sub>N<sub>4</sub>O<sub>2</sub>  
 Molecular Weight: 523.88



10 8 6 4 2 0 PPM

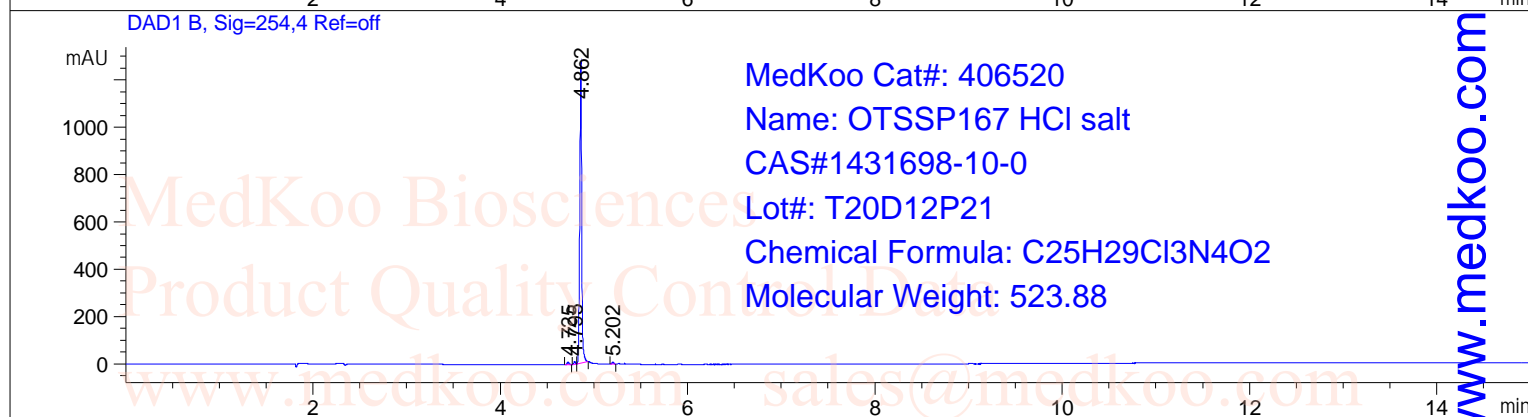
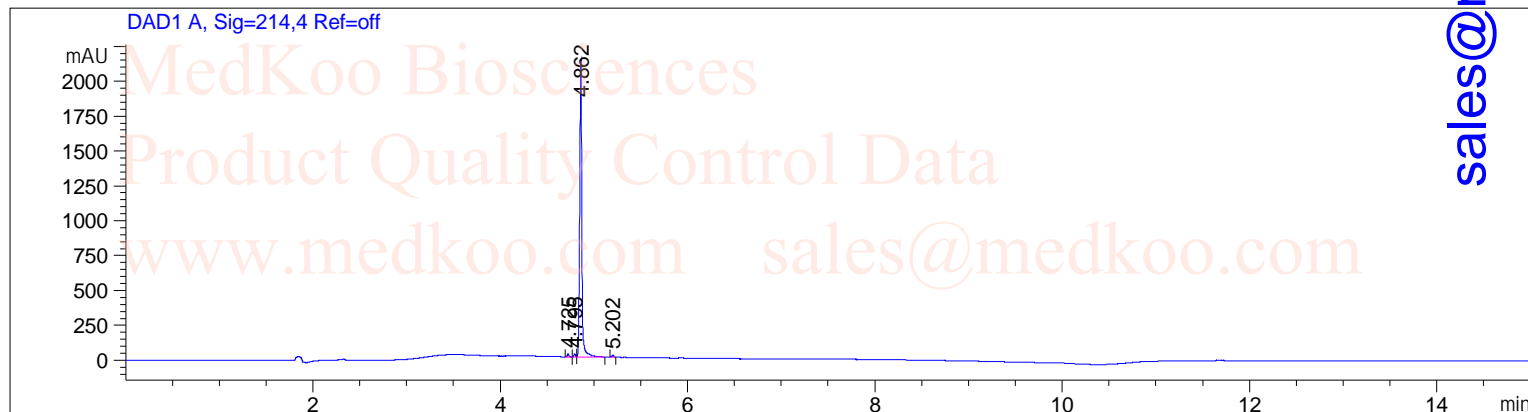
NMRB003, MeOD,

F1: 400.232 F2: 1.000 SW1: 8224 OF1: 2463.9 PTS1d: 32768

EX: zg30 MedKoo Biosciences sales@medkoo.com PD: 10.000 LB: 0.0 Nuts - \$pdata

# OTSSP167 HCl HPLC Analysis

Acq. Operator :  
 Acq. Instrument : HPLC Location : P1-A-01  
 Sample Name : OTSSP167 HCl Inj Volume : 1.2 µl  
 Method : C:\CHEM32\1\METHODS\2-HPLC-15MIN.M  
 Method Info : Mobile Phase: A: water(0.05%TFA) B: ACN(0.05%TFA)  
 Gradient: 5% increase to 95%B within 8 min, 95%B for 7 min.  
 Flow Rate: 1.0ml/min  
 Column: Sunfire C18, 4.6\*150mm, 3.5µm ; Column Temperature: 40 C  
 Sample Info : Easy-Access Method: '2-HPLC-15MIN'



## Area Percent Report

Signal 1: DAD1 A, Sig=214, 4 Ref=off

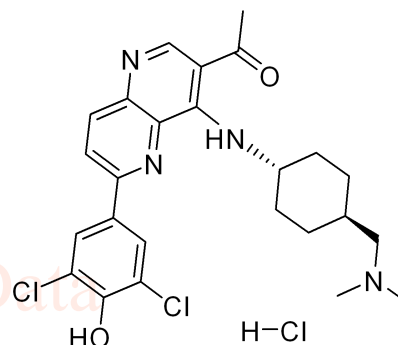
Peak #	RetTime [min]	Type	Width [min]	Area [mAU*s]	Height [mAU]	Area %
1	4.725	BB	0.0189	24.61657	19.94646	0.7015
2	4.795	BV	0.0173	25.24499	22.51390	0.7194
3	4.862	VB	0.0246	3440.38965	2133.79736	98.0386
4	5.202	BB	0.0192	18.96899	15.55112	0.5405

Totals : 3509.22020 2191.80884

Signal 2: DAD1 B, Sig=254, 4 Ref=off

Peak #	RetTime [min]	Type	Width [min]	Area [mAU*s]	Height [mAU]	Area %
1	4.725	BB	0.0187	13.41941	10.86838	0.7028
2	4.795	BB	0.0166	12.54108	11.89479	0.6568
3	4.862	BB	0.0222	1872.59204	1273.85266	98.0744
4	5.202	BB	0.0191	10.80564	8.78241	0.5659

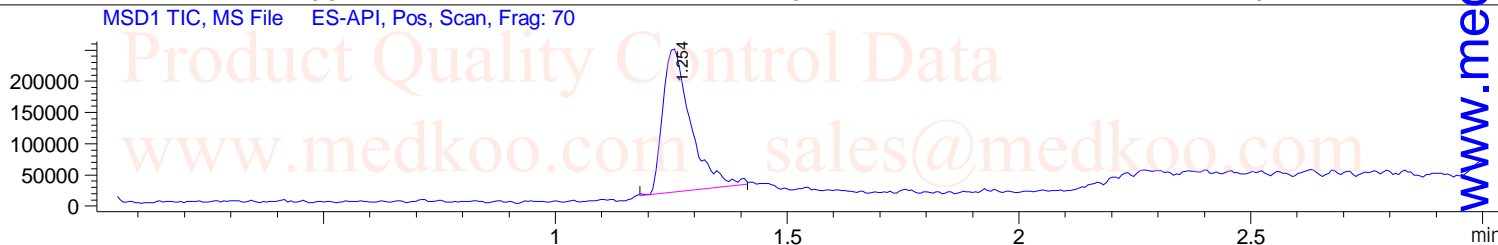
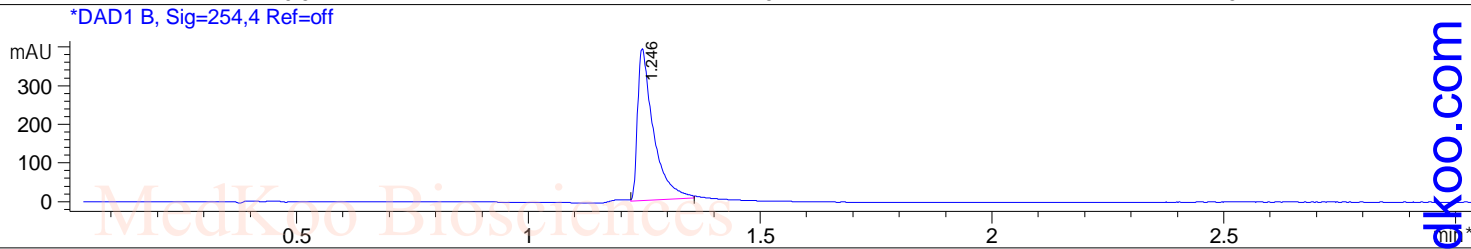
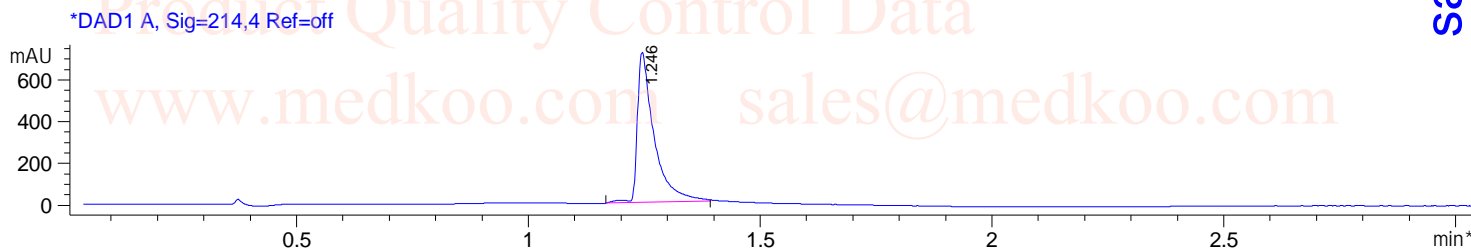
Totals : 1909.35817 1305.39824



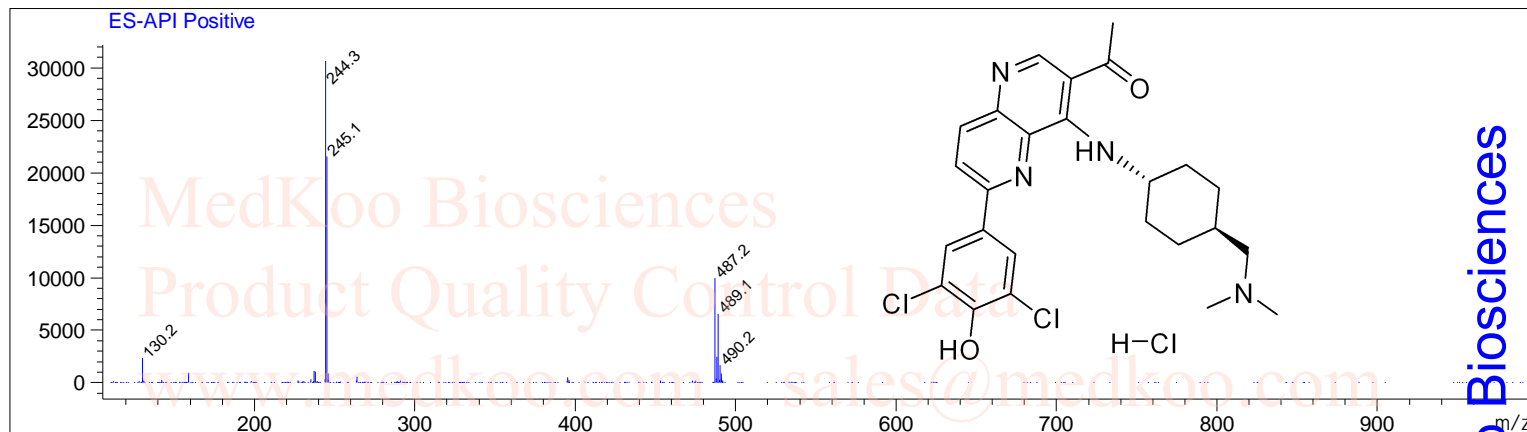
# OTSSP167 HCl LC/MS Analysis

Sample Name : OTSSP167 HCl  
Acq. Operator :  
Spec. Reported : MS Integration  
Acq. Method : D:\METHODS\1-POS-3MIN.M  
Analysis Method : D:\METHODS\1-POS-3MIN.M  
Sample Info : Easy-Access Method: '1-POS-3MIN.M'  
Method Info : Mobile Phase: A: water(0.01%TFA) B: ACN(0.01%TFA)  
Gradient: 5%B increase to 95%B within 1.3 min, 95%B for 1.7 min.  
Flow Rate: 2.0ml/min  
Column: Sunfire C18, 4.6\*50mm, 3.5um  
Column Temperature: 50 C  
Detection: UV(214,4nm) and MS(ESI, Pos mode, 110 to 1000 amu)

Tgt Mass(EZX) :  
Location : P1-B-09  
Inj : 1  
Inj Volume : 1.2 ul



Ret. Time: 1.25 <<<< POSITIVE SPECTRA >>>>



MedKoo Cat#: 406520  
Name: OTSSP167 HCl salt  
CAS#1431698-10-0  
Lot#: T20D12P21  
Chemical Formula: C<sub>25</sub>H<sub>29</sub>Cl<sub>3</sub>N<sub>4</sub>O<sub>2</sub>  
Molecular Weight: 523.88

OTSSP167 free base  
Chemical Formula: C<sub>25</sub>H<sub>28</sub>Cl<sub>2</sub>N<sub>4</sub>O<sub>2</sub>  
Exact Mass: 486.15893;  
Molecular Weight: 487.42

sales@medkoo.com

www.medkoo.com

MedKoo Biosciences