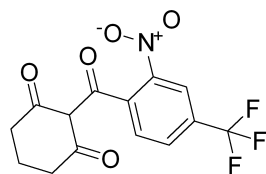


Nitisinone HNMR Analysis, Solvent: CDCl3



MedKoo Cat#: 314265

Name: Nitisinone

CAS#: 104206-65-7

Lot#: A21T04K29

Chemical Formula: C₁₄H₁₀F₃NO₅

Exact Mass: 329.05111

Molecular Weight: 329.23

8.483
8.481

7.966
7.965
7.962
7.946
7.945
7.942
7.389
7.369
7.263

2.835
2.819
2.803
2.394
2.378
2.361
2.085
2.068
2.052
2.036
2.020
1.580

-0.001

1.00

1.06

1.06

2.17

2.17

2.19

8

6

4

2

0

PPM

F1: 400.130

F2: 1.000

SW1: 8224

OF1: 2462.4

PTS1d: 65536

EX: zg30

PW: 1.50 usec

PD: 1.00

LB: 0.3

MedKoo Biosciences

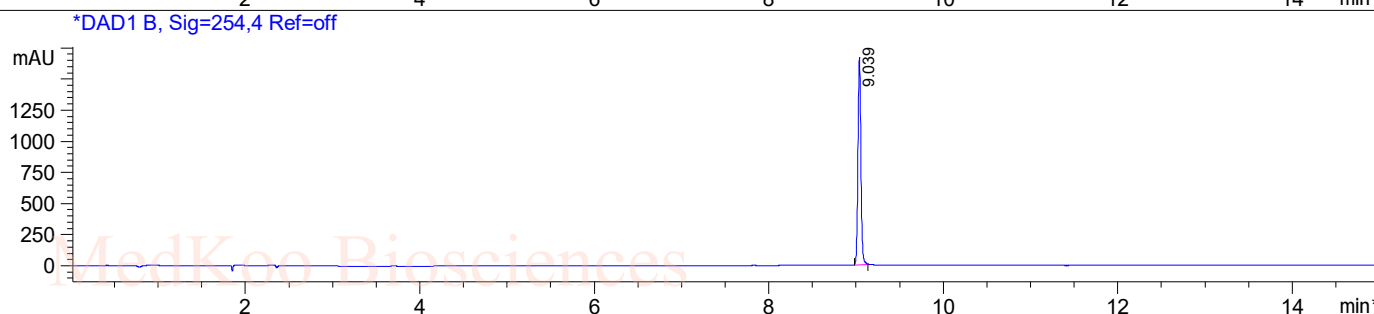
www.medkoo.com

sales@medkoo.com

Nitisinone HPLC Analysis

Sample Name : 65-7

Method Info : Mobile Phase : A:water(0.01%TFA) B:ACN(0.01%TFA)
Gradient:5%B increase to 95%B within 9min,95%B for 6min
Flow Rate :1ml/min
Column :Sunfire C18 150*4.6mm,3.5um
Column Temperature:45C
Detection:UV(214nm,4nm) and MS(ESI,POS Mode,110-1300amu)

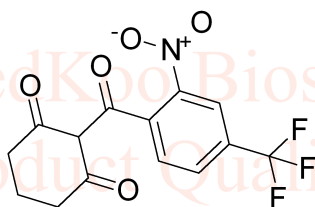


Integration Results for DAD1 A, Sig=214,4 Ref=off

RetTim	Width	Area	Height	Area%
9.04	0.04	5752.66	2426.90	100.00

Integration Results for DAD1 B, Sig=254,4 Ref=off

RetTim	Width	Area	Height	Area%
9.04	0.04	3928.68	1669.48	100.00



MedKoo Cat#: 314265

Name: Nitisinone

CAS#: 104206-65-7

Lot#: A21T04K29

Chemical Formula: C₁₄H₁₀F₃NO₅

Exact Mass: 329.05111

Molecular Weight: 329.23

Nitisinone LC/MS Analysis

Sample Name : 104206-65-7

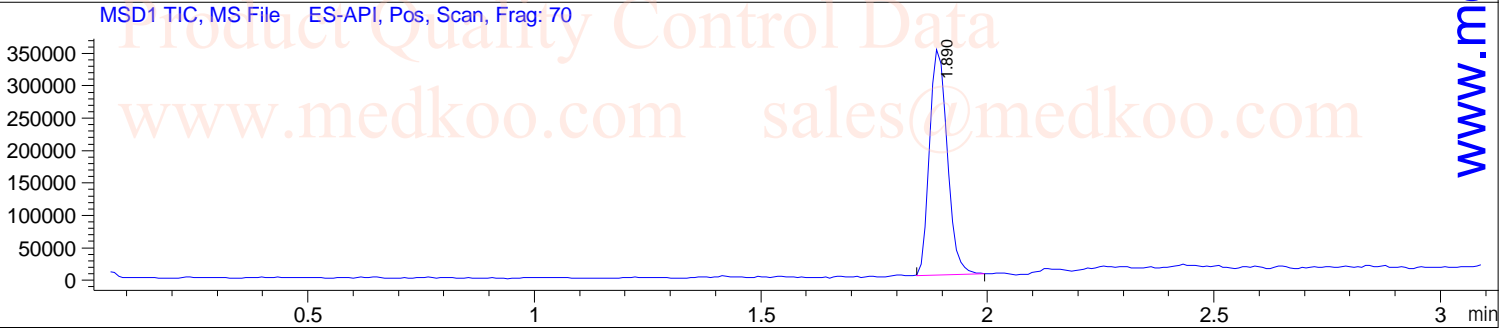
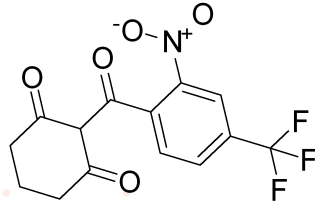
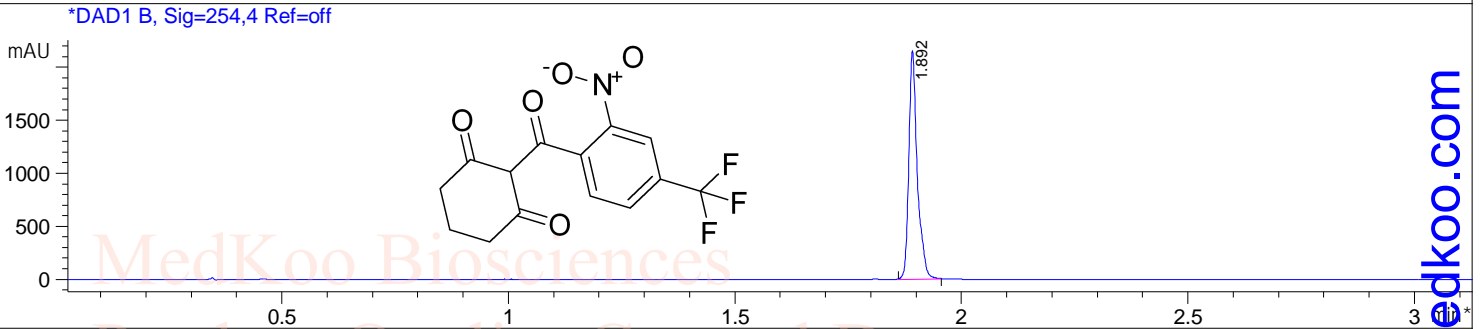
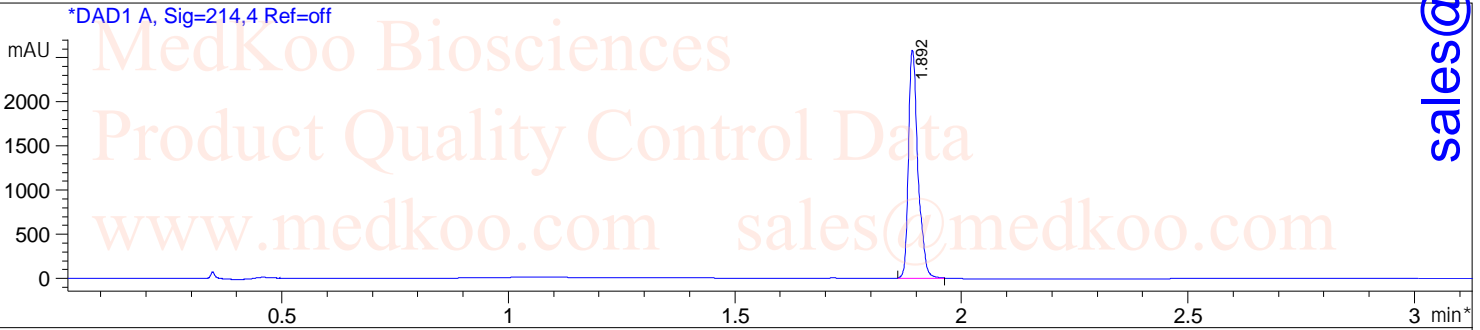
Method Info : Column:SunFire C18 (4.6x 50 mm,3.5 um)

Mobile phase: H2O(0.01%TFA) (A) / ACN(0.01%TFA) (B)

Elution program: Gradient from 10 to95% of B in 1.4 min at 2ml/min

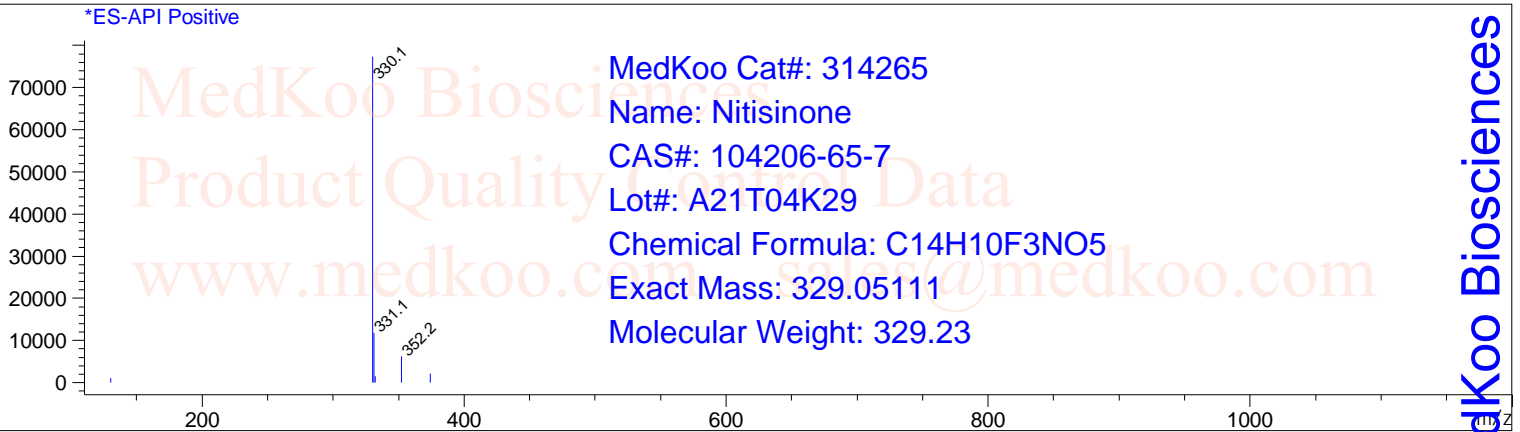
Temperature: 50 °C

Detection: UV (214 , 4 nm) and MS (ESI, Pos mode ,110 to 1000 amu)



Ret. Time: 1.89

<<<< POSITIVE SPECTRA >>>>



sales@medkoo.com

www.medkoo.com

MedKoo Biosciences