

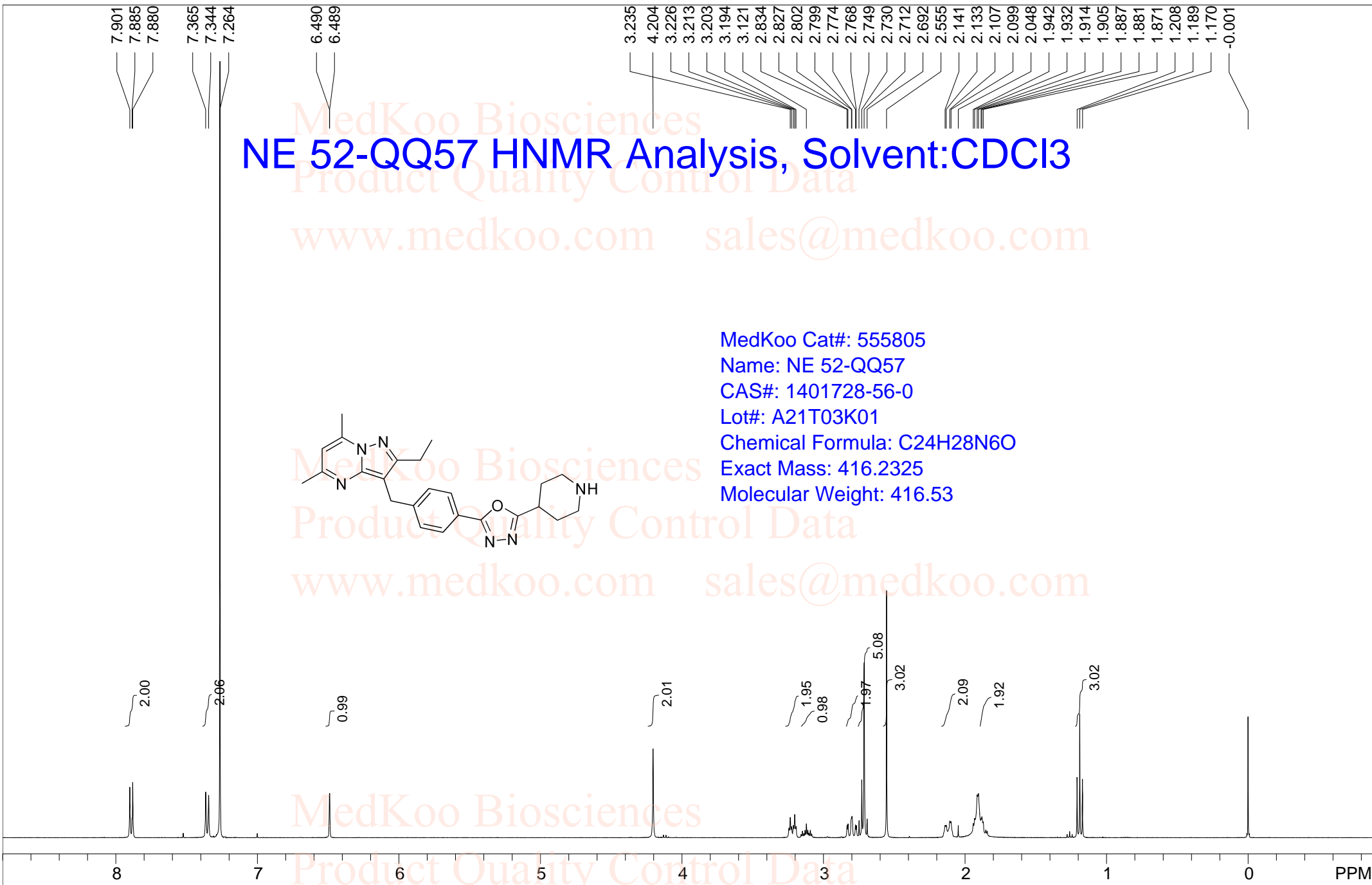
NE 52-QQ57 HNMR Analysis, Solvent:CDCl3

MedKoo Biosciences
Product Quality Control Data
www.medkoo.com sales@medkoo.com

MedKoo Cat#: 555805
Name: NE 52-QQ57
CAS#: 1401728-56-0
Lot#: A21T03K01
Chemical Formula: C₂₄H₂₈N₆O
Exact Mass: 416.2325
Molecular Weight: 416.53

MedKoo Biosciences
Product Quality Control Data
www.medkoo.com sales@medkoo.com

MedKoo Biosciences
Product Quality Control Data
www.medkoo.com sales@medkoo.com



CDC13							
F1: 400.130	F2: 1.000	SW1: 8224	OF1: 2463.3	PTS1d: 32768			
EX: zg30	PD: www.medkoo.com	PW: 1.50 usec	LB: 0.3	sales@medkoo.com			

NE 52-QQ57 HPLC Analysis

Sample Name : 1401728-56-0

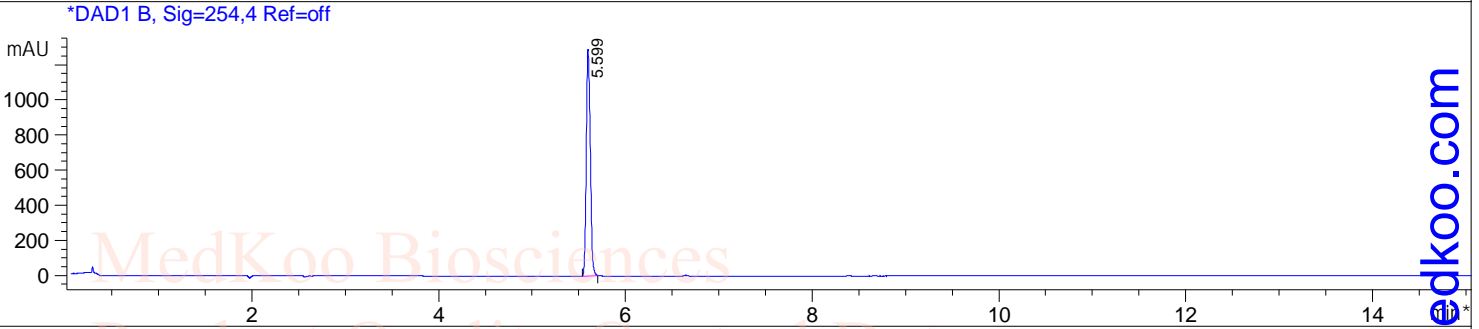
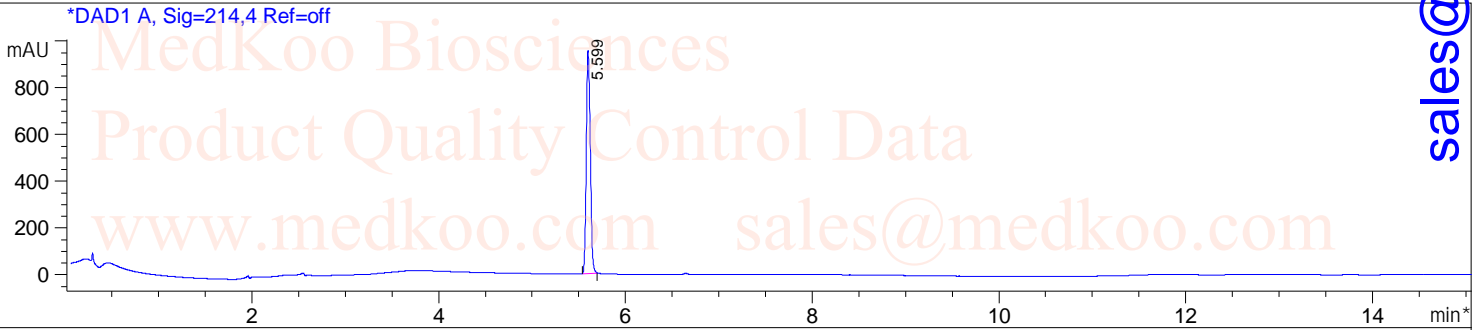
Method Info : Column:SUNFire C18 (4.6x 150 mm, 3.5um)

Mobile phase: H2O(0.01%TFA) (A) / ACN(0.01%TFA) (B)

Elution program: Gradient from 5 to 95% of B in 8min at 1ml/min

Temperature: 40 °C

Detection: UV (214 , 4 nm) and MS (ESI, Pos mode ,100 to 1500 amu)

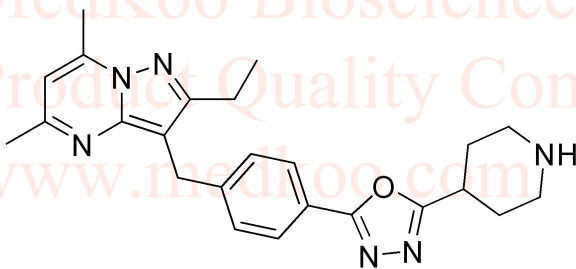


Integration Results for DAD1 A, Sig=214,4 Ref=off

RetTim	Width	Area	Height	Area%
5.60	0.05	2850.40	955.73	100.00

Integration Results for DAD1 B, Sig=254,4 Ref=off

RetTim	Width	Area	Height	Area%
5.60	0.05	3840.88	1292.27	100.00



MedKoo Cat#: 555805

Name: NE 52-QQ57

CAS#: 1401728-56-0

Lot#: A21T03K01

Chemical Formula: C₂₄H₂₈N₆O

Exact Mass: 416.2325

Molecular Weight: 416.53

sales@medkoo.com

www.medkoo.com

MedKoo Biosciences

NE 52-QQ57 LC/MS Analysis

Sample Name : 1401728-56-0

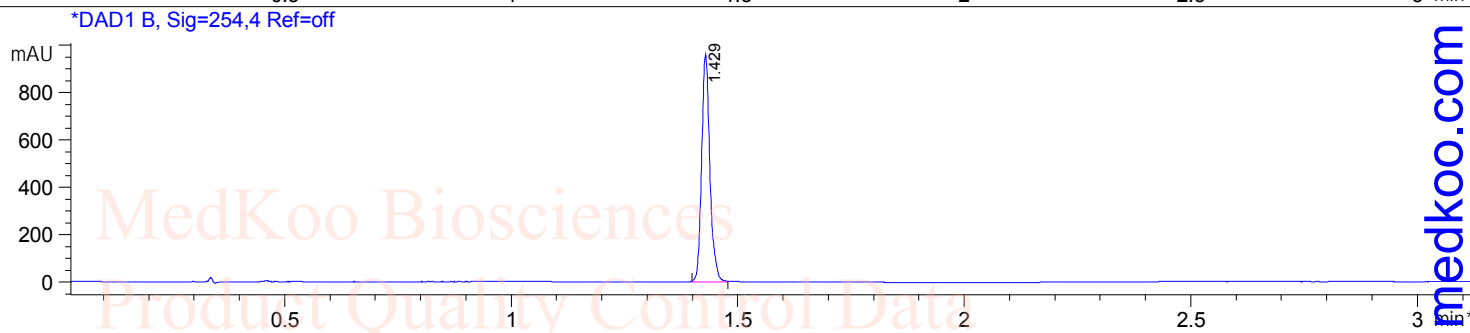
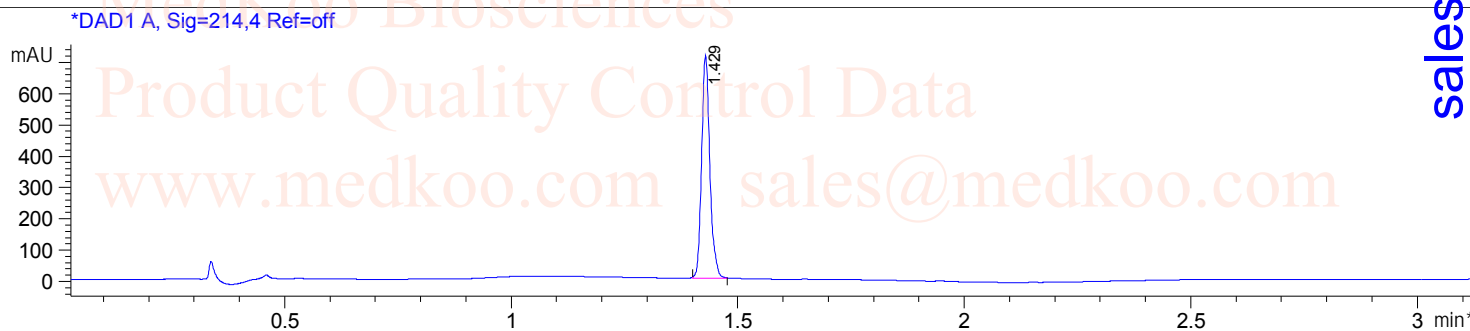
Method Info : Column:SunFire C18 (4.6x 50 mm,3.5 um)

Mobile phase: H2O(0.01%TFA) (A) / ACN(0.01%TFA) (B)

Elution program: Gradient from 10 to95% of B in 1.4 min at 2ml/min

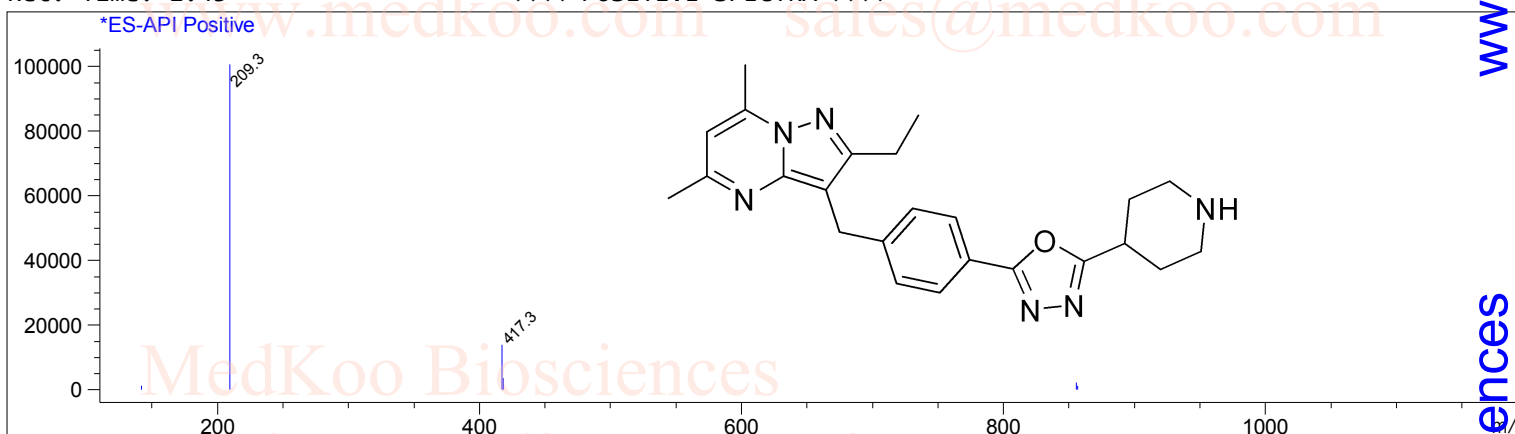
Temperature: 50 °C

Detection: UV (214 , 4 nm) and MS (ESI, Pos mode ,110 to 1000 amu)



Ret. Time: 1.43

<<<< POSITIVE SPECTRA >>>>



MedKoo Cat#: 555805

Name: NE 52-QQ57

CAS#: 1401728-56-0

Lot#: A21T03K01

Chemical Formula: C24H28N6O

Exact Mass: 416.2325

Molecular Weight: 416.53

sales@medkoo.com

www.medkoo.com

MedKoo Biosciences