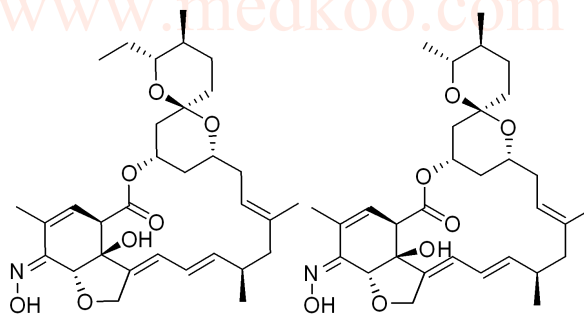


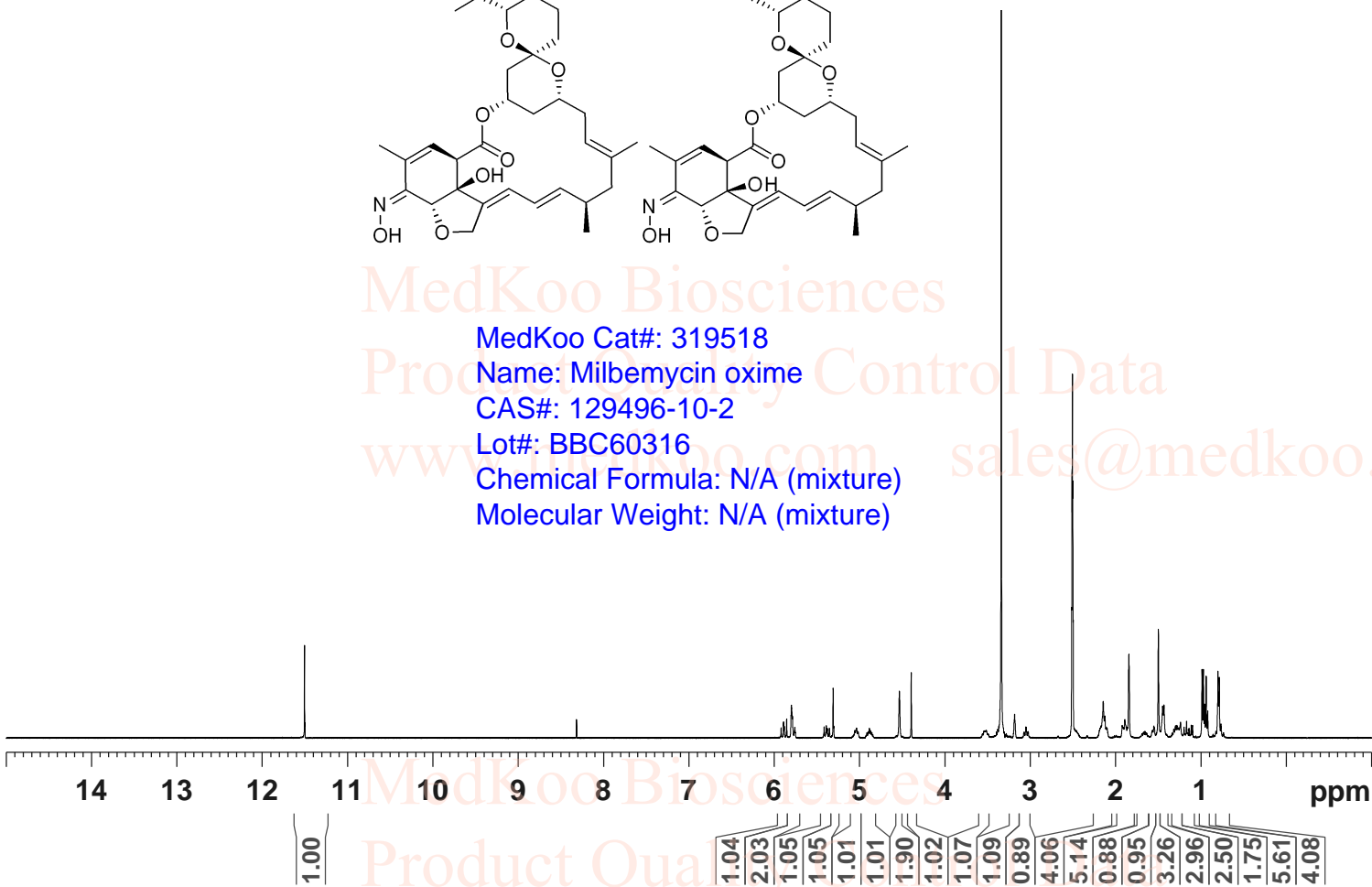
# Milbemycin Oxime HNMR Analysis, Solvent= DMSO

11.507  
11.502  
5.893  
5.856  
5.800  
5.797  
5.789  
5.312  
4.535  
4.396  
3.341  
3.185  
2.516  
2.512  
2.508  
2.503  
2.499  
2.146  
2.128  
1.924  
1.893  
1.845  
1.553  
1.546  
1.500  
1.450  
1.435  
1.299  
1.281  
1.265  
1.240  
1.199  
1.170  
1.141  
1.116  
1.100  
0.989  
0.973  
0.958  
0.940  
0.921  
0.802  
0.786  
0.767



MedKoo Cat#: 319518  
Name: Milbemycin oxime  
CAS#: 129496-10-2  
Lot#: BBC60316  
Chemical Formula: N/A (mixture)  
Molecular Weight: N/A (mixture)

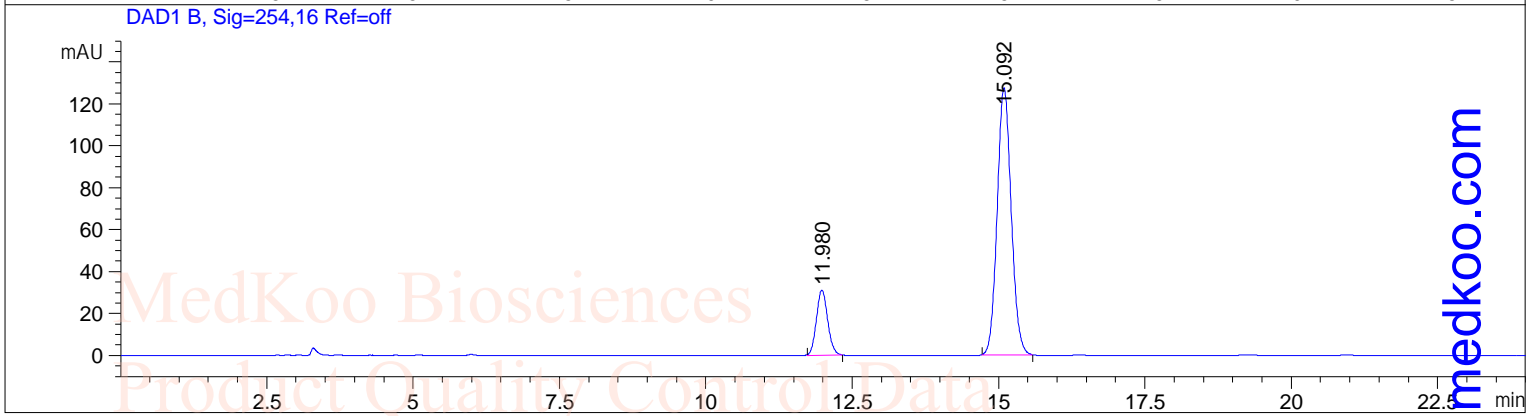
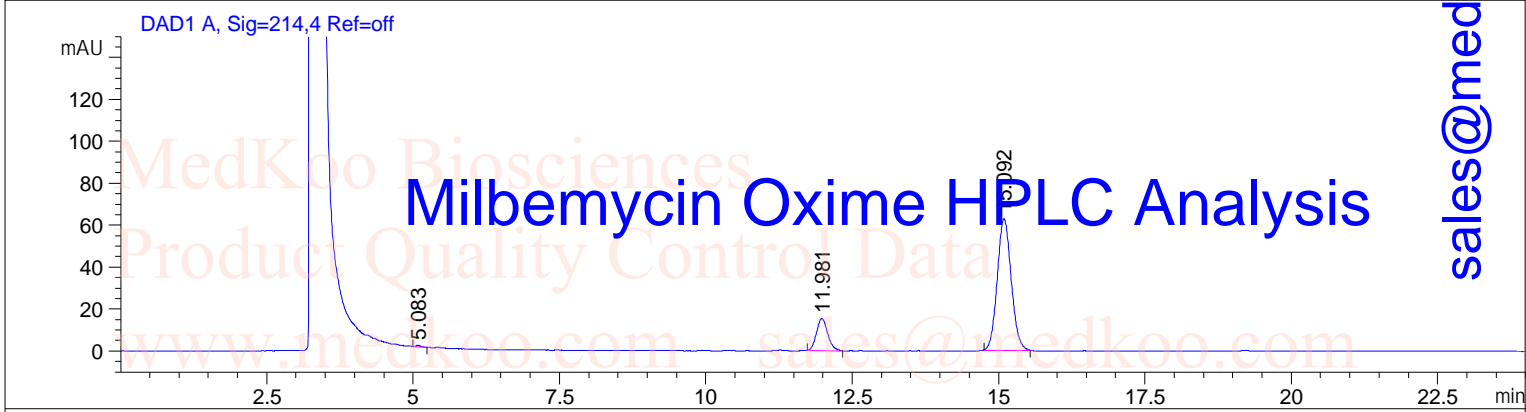
Current Data Parameters  
NAME PO60311B  
EXPNO 10  
PROCNO 1  
F2 - Acquisition Parameters  
INSTRUM spect  
PROBHD 5 mm PABBO BB-  
PULPROG zg30  
TD 65536  
SOLVENT DMSO  
NS 16  
DS 2  
SWH 8012.820 Hz  
FIDRES 0.122266 Hz  
AQ 4.0894465 sec  
RG 161  
DW 62.400 usec  
DE 6.50 usec  
TE 297.5 K  
D1 1.00000000 sec  
TD0 1  
===== CHANNEL f1 =====  
SFO1 400.1324710 MHz  
NUC1 1H  
P1 13.00 usec  
PLW1 36.00000000 W  
F2 - Processing parameters  
SI 65536  
SF 400.1300000 MHz  
WDW no  
SSB 0  
LB 0 Hz  
GB 0  
PC 1.00



```

=====
User       : ZJ                               Seq. Line : 8
Instrument : Instrument 1                     Location  : Vial 42
Sample Name : 129496-10-2                    Inj       : 1
Acq. Method : C:\CHEM32\1\DATA\TEST-KR.M    Inj Volume: 1.0 µl
Analysis Method : C:\CHEM32\1\METHODS\TEST-KR.M
=====

```



=====  
Area Percent Report  
=====

```

Sorted By      : Signal
Multiplier     : 1.0000
Dilution      : 1.0000
Use Multiplier & Dilution Factor with ISTDs

```

MedKoo Cat#: 319518  
Name: Milbemycin oxime  
CAS#: 129496-10-2  
Lot#: BBC60316  
Chemical Formula: N/A (mixture)  
Molecular Weight: N/A (mixture)

Signal 1: DAD1 A, Sig=214,4 Ref=off

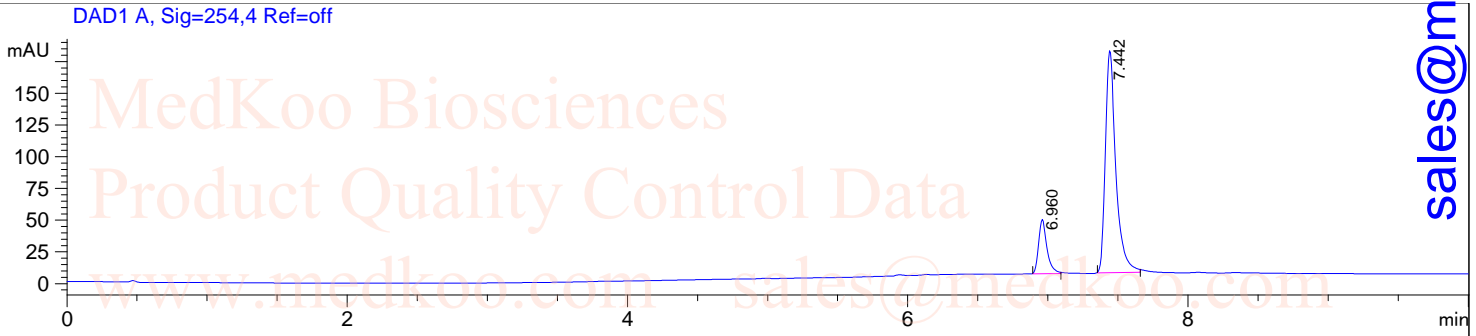
Peak #	RetTime [min]	Type	Width [min]	Area [mAU*s]	Height [mAU]	Area %
1	5.083	BB	0.0752	3.15322	6.91091e-1	0.2522
2	11.981	BB	0.2029	202.54700	15.25341	16.2031
3	15.092	BB	0.2581	1044.34705	62.78505	83.5446

Total: 1250.04727 78.72955

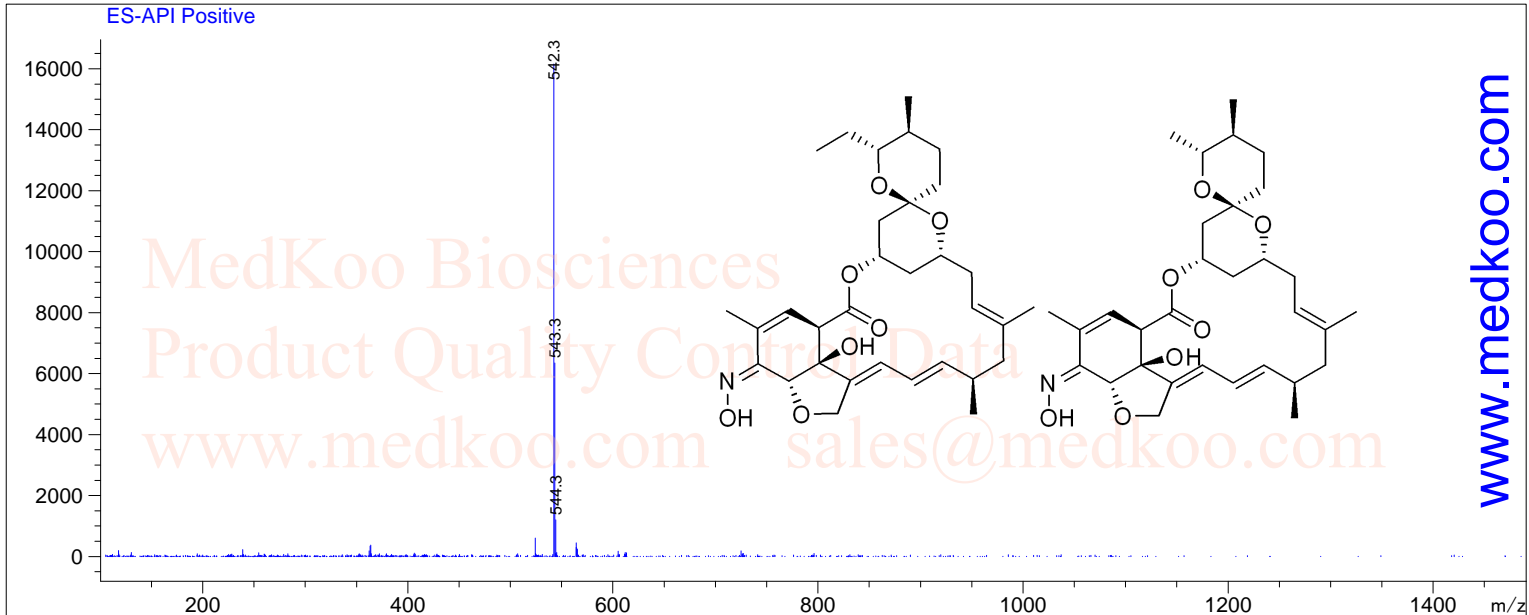
# Milbemycin Oxime LC/MS Analysis

Sample Name : P060311B  
Acq. Operator : [BSB3]  
Spec. Reported : MS Integration  
Acq. Method : C:\Chem32\1\DATA\TEST-KR-POS.M  
Analysis Method : C:\Chem32\1\METHODS\TEST-KR-POS.M

Tgt Mass(EZX) :  
Location : Vial 92  
Inj : 1  
Inj Volume : 0.5 ul



Ret. Time: 7.11 <<<< POSITIVE SPECTRA >>>>



Ret. Time: 7.61

