

Metformin HCl HNMR Analysis, solvent: D2O



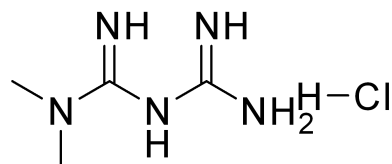
Current Data Parameters
NAME ADX-155
EXPNO 10
PROCNO 1

F2 - Acquisition Parameters

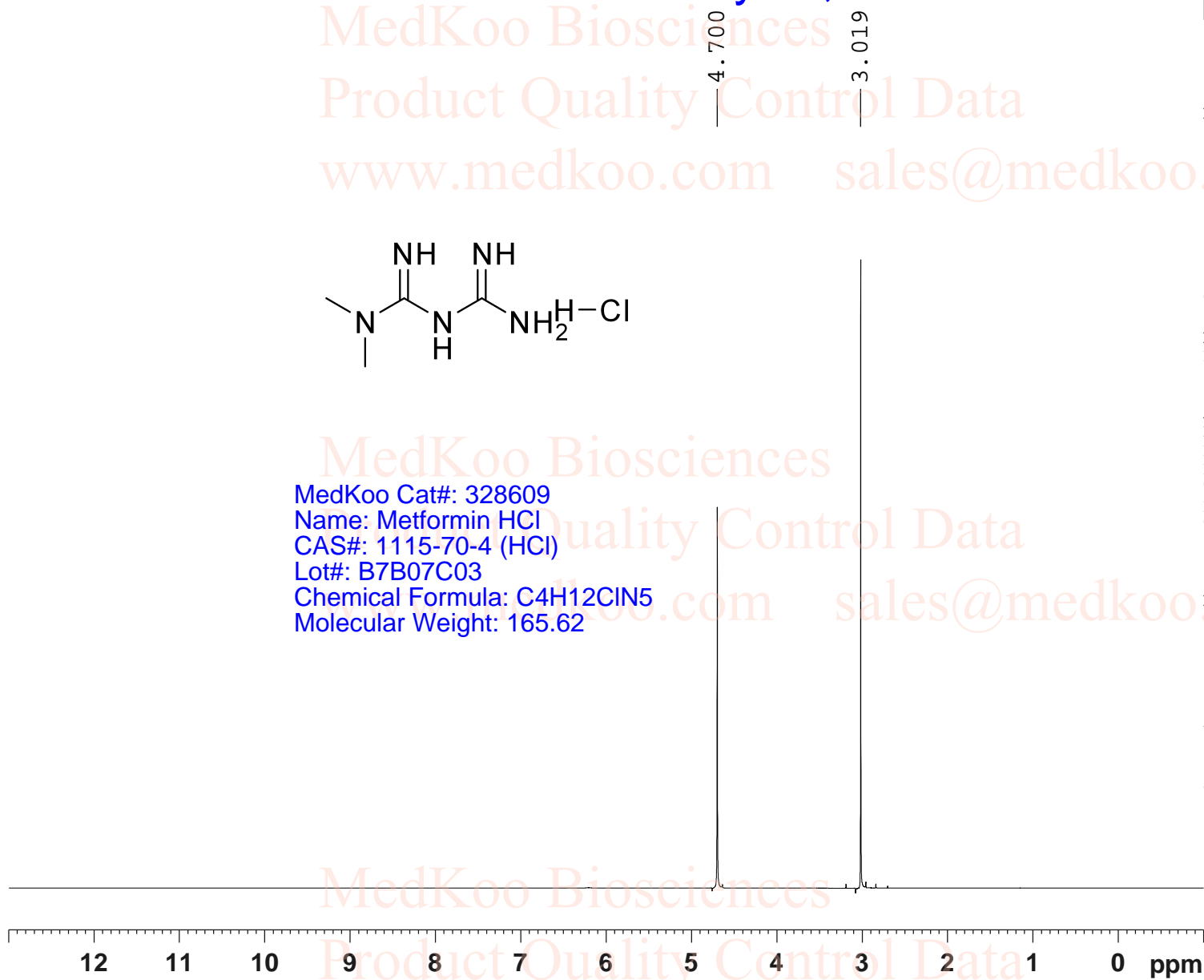
INSTRUM spect
PROBHD 5 mm PABBO BB-
PULPROG zg30
TD 65536
SOLVENT D2O
NS 16
DS 2
SWH 8012.820 Hz
FIDRES 0.122266 Hz
AQ 4.0894465 sec
RG 57
DW 62.400 usec
DE 6.50 usec
TE 300.7 K
D1 1.00000000 sec
TD0 1

==== CHANNEL f1 =====
SFO1 400.1324710 MHz
NUC1 1H
P1 13.00 usec
PLW1 19.00000000 W

F2 - Processing parameters
SI 65536
SF 400.1300000 MHz
WDW no
SSB 0
LB 0 Hz
GB 0
PC 1.00

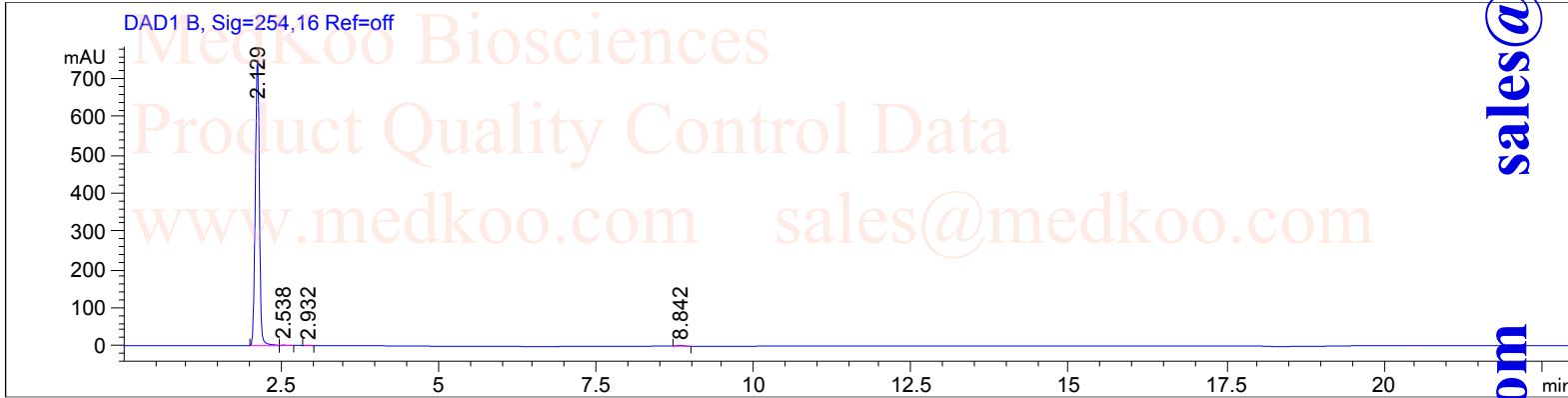


MedKoo Cat#: 328609
Name: Metformin HCl
CAS#: 1115-70-4 (HCl)
Lot#: B7B07C03
Chemical Formula: C4H12ClN5
Molecular Weight: 165.62



Metformin HCl HPLC Analysis

User : System
 Instrument : Instrument 1
 Acq. Method : C:\CHEM32\1\METHODS\Normal.M Location : Vial 2
 Analysis Method : C:\CHEM32\1\METHODS\Normal.M Inj. Volume : 1.0 µl



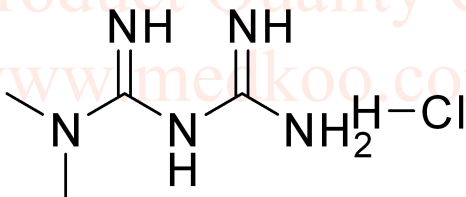
Area Percent Report

Sorted By : Signal
 Multiplier: : 1.0000
 Dilution: : 1.0000
 User Multiplier & Dilution Factor with ISTDs

Signal 2: DAD1 B, Sig=254,16 Ref=off

Peak #	Ret. Time [min]	Type	Width [min]	Area [mAU*s]	Height [mAU]	Area %
1	2.129	BV	0.0711	3414.72046	749.76556	99.2282
2	2.538	VB	0.0989	9.00823	1.40234	0.2618
3	2.932	VVA+	0.0944	5.80250	1.02414	0.1686
4	8.842	BB	0.0962	11.74991	1.89753	0.3414

Total : 3441.28110 54.08957



MedKoo Cat#: 328609
 Name: Metformin HCl
 CAS#: 1115-70-4 (HCl)
 Lot#: B7B07C03
 Chemical Formula: C₄H₁₂ClN₅
 Molecular Weight: 165.62

Metformin HCl LCMS Analysis

Sample Name : ADX-155

Acq. Operator : [BSB2]

Spec. Reported : MS Integration

Acq. Method : C:\Chem32\1\DATA\TEST KR POS.M

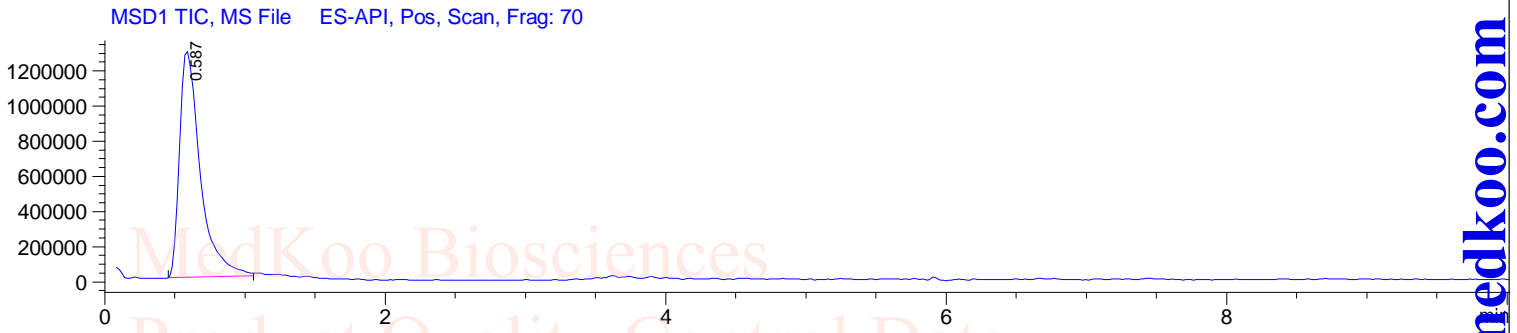
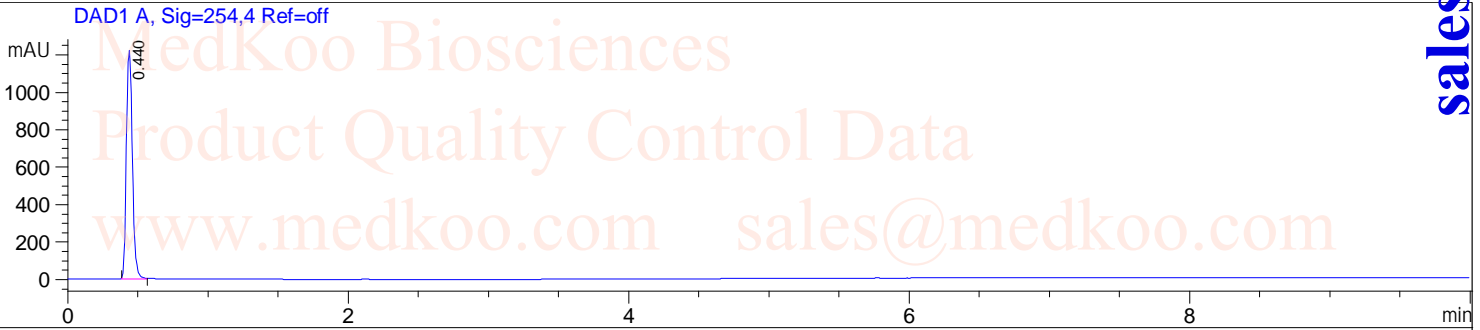
Analysis Method : C:\Chem32\1\METHODS\TEST KR POS.M

Tgt Mass(EZX) :

Location : Vial 12

Inj : 1

Inj Volume : 1 ul



Ret. Time: 0.59

<<<< POSITIVE SPECTRA >>>>

