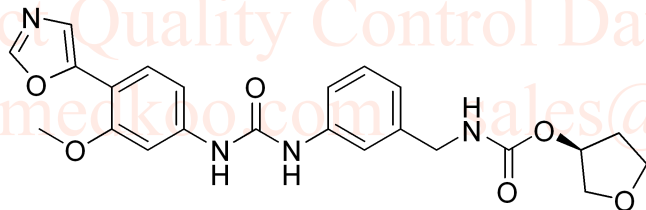


Merimepodib HNMR Analysis in DMSO

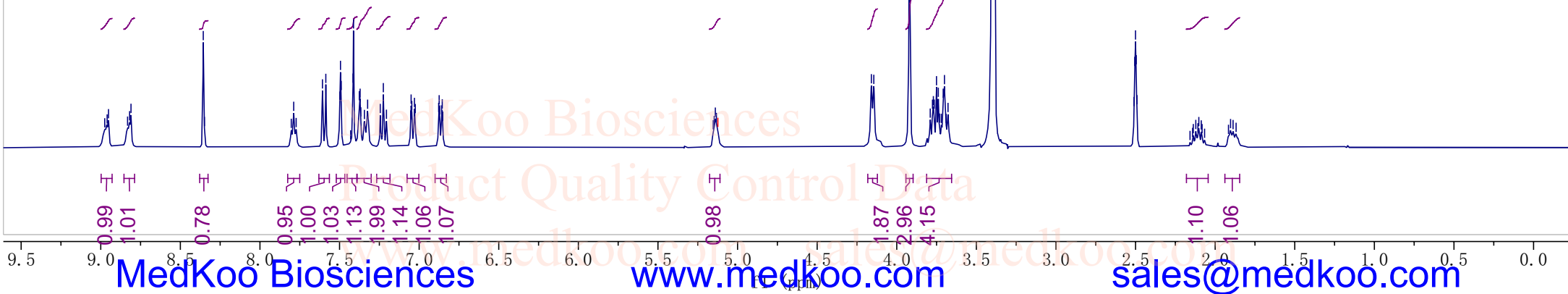
8.98
8.96
8.95
8.83
8.82
8.81
8.36
8.35
7.80
7.79
7.77
7.61
7.59
7.50
7.49
7.49
7.43
7.42
7.41
7.38
7.37
7.37
7.34
7.32
7.24
7.22
7.21
7.05
7.05
7.05
7.03
7.02
6.88
6.87
6.87
6.86
6.85
6.85
5.15
5.15
5.14
5.13
5.12
4.16
4.14
3.92
3.78
3.77
3.76
3.75
3.74
3.73
3.72
3.71
3.70
3.69
3.68
3.41
3.40
3.40
3.39
3.39
2.51
2.50
2.50
2.49
2.14
2.14
2.12
2.11
2.10
2.09
2.08
2.07
1.92
1.90
1.89
1.87

MedKoo Biosciences
Product Quality Control Data
www.medkoo.com sales@medkoo.com



MedKoo Cat#: 206228
Name: Merimepodib
CAS#: 198821-22-6
Lot#: A20T06K15
Chemical Formula: C₂₃H₂₄N₄O₆
Exact Mass: 452.16958
Molecular Weight: 452.46

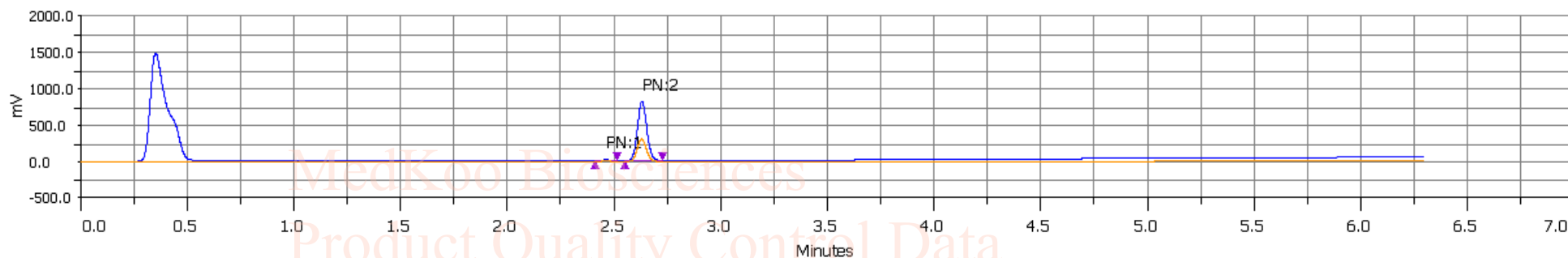
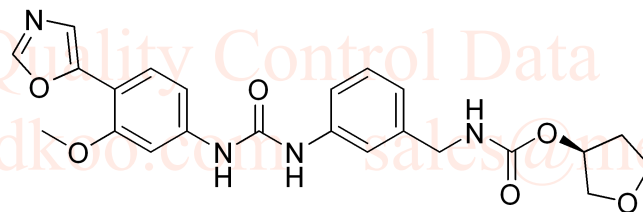
MedKoo Biosciences
Product Quality Control Data
www.medkoo.com sales@medkoo.com



Merimepodib HPLC Analysis

Graph

Sample Name Merimepodib
Application Name Admin App (Administrator)
Method Name User2
Configuration Name Configuration 1
Version 23
Data Instrument Name Detector
Data Channel Name 156 Channel 1
Notes
Injection Number 9



■ 156 Channel 1
 ■ 156 Channel 2

Sample Table

Injection Number	Sample Name	Sample Location	Peak Name	Retention Time (min)	Area (uVmin x100)	Area %	Height (mV)	Plate Number
9	Merimepodib	Sample Zone->23	1	2.465	40579.1667	0.979	8.221	14692.628
9	Merimepodib	Sample Zone->23	2	2.634	4105817.5	99.021	812.874	17316.366

MedKoo Cat#: 206228

Name: Merimepodib

CAS#: 198821-22-6

Lot#: A20T06K15

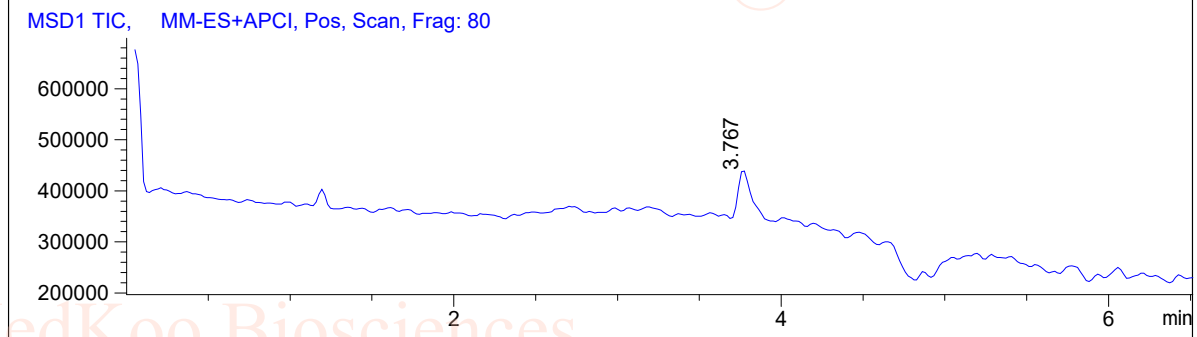
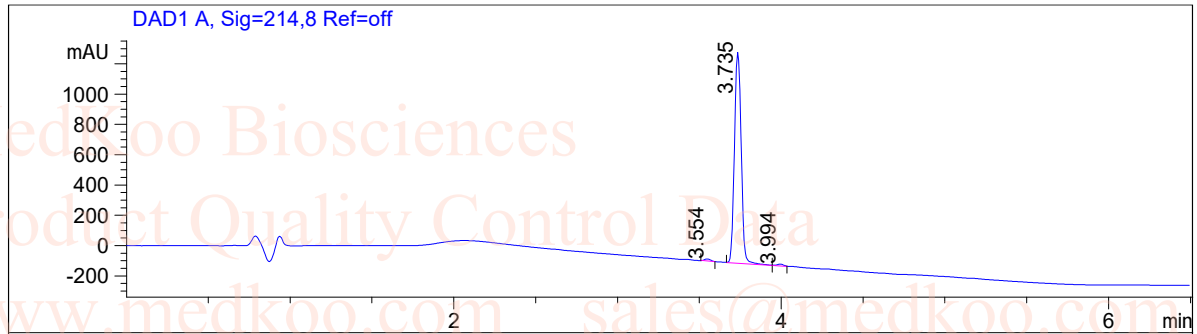
Chemical Formula: C₂₃H₂₄N₄O₆

Exact Mass: 452.16958

Molecular Weight: 452.46

Merimepodib LC/MS Analysis

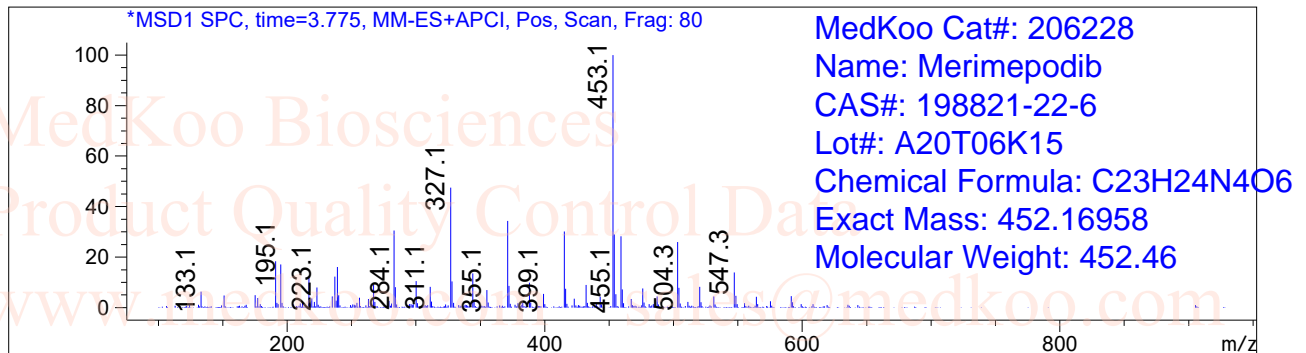
Sample Name : 198821-22-6
 Data File : D:\DATA-LCMS-13\198821-22-6.D
 Inj. Vol. : 3ul
 Location : Vial 91
 Acq Operator : LCMS-13
 Acq. Method : D:\data-lcms-13\P-05-95-TFA-C2.M
 Method Info. : column:Xbridge C18 5um 4.6*30mm ;mobile phase:B(ACN), A(0.02%NH4Ac); gradient(B%):as Acq.Method above



Integration Results

Signal 1: DAD1 A, Sig=214,8 Ref=off

#	R.T.	Type	Height	Height%	Width	Area	Area %
1	3.554	MM	13.471	0.945	0.044	35.724	0.882
2	3.735	MF	1400.625	98.248	0.047	3982.189	98.298
3	3.994	FM	11.505	0.807	0.048	33.209	0.820



MedKoo Cat#: 206228
 Name: Merimepodib
 CAS#: 198821-22-6
 Lot#: A20T06K15
 Chemical Formula: C₂₃H₂₄N₄O₆
 Exact Mass: 452.16958
 Molecular Weight: 452.46

