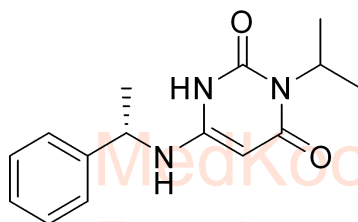
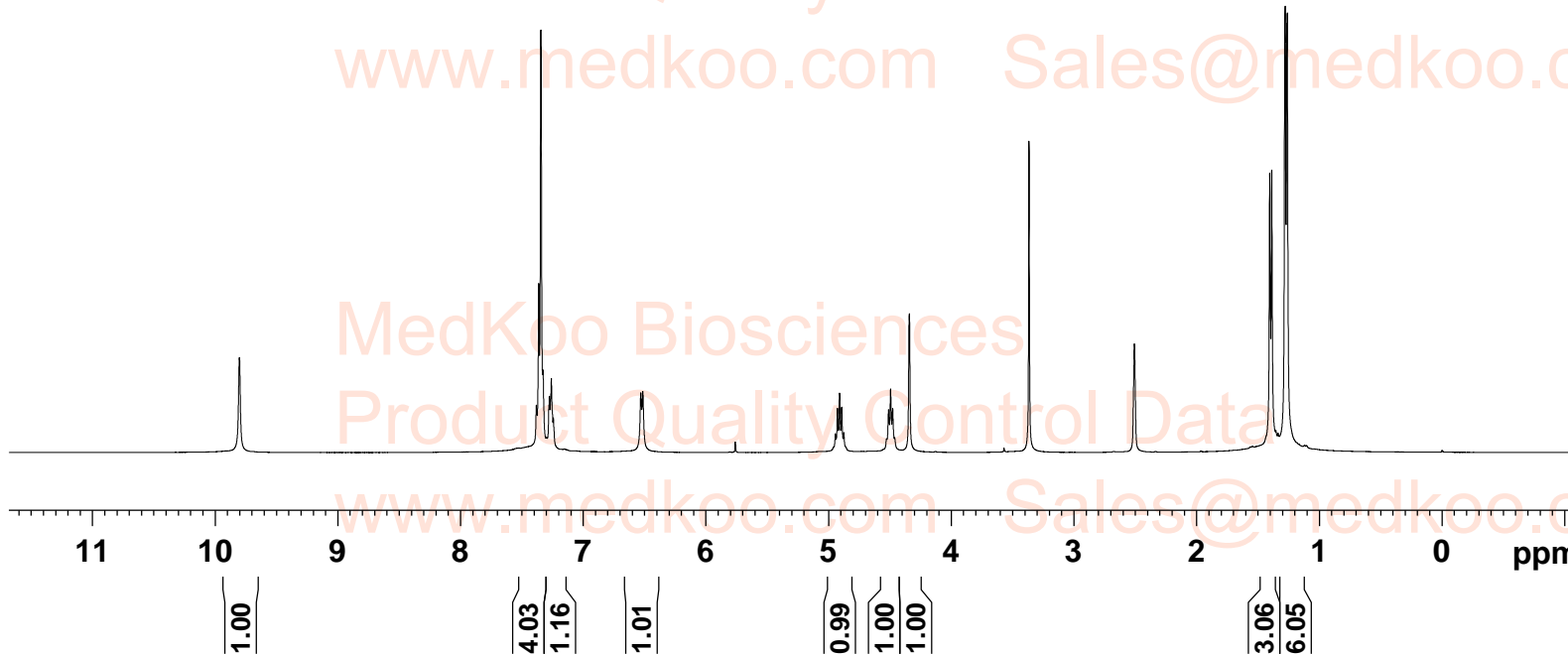


Mavacamten HNMR Analysis, Solvent:DMSO



MedKoo Cat#: 527002
 Name: Mavacamten
 CAS#: 1642288-47-8
 Lot#: T22D06P10
 Chemical Formula: C₁₅H₁₉N₃O₂
 Exact Mass: 273.1477
 Molecular Weight: 273.336

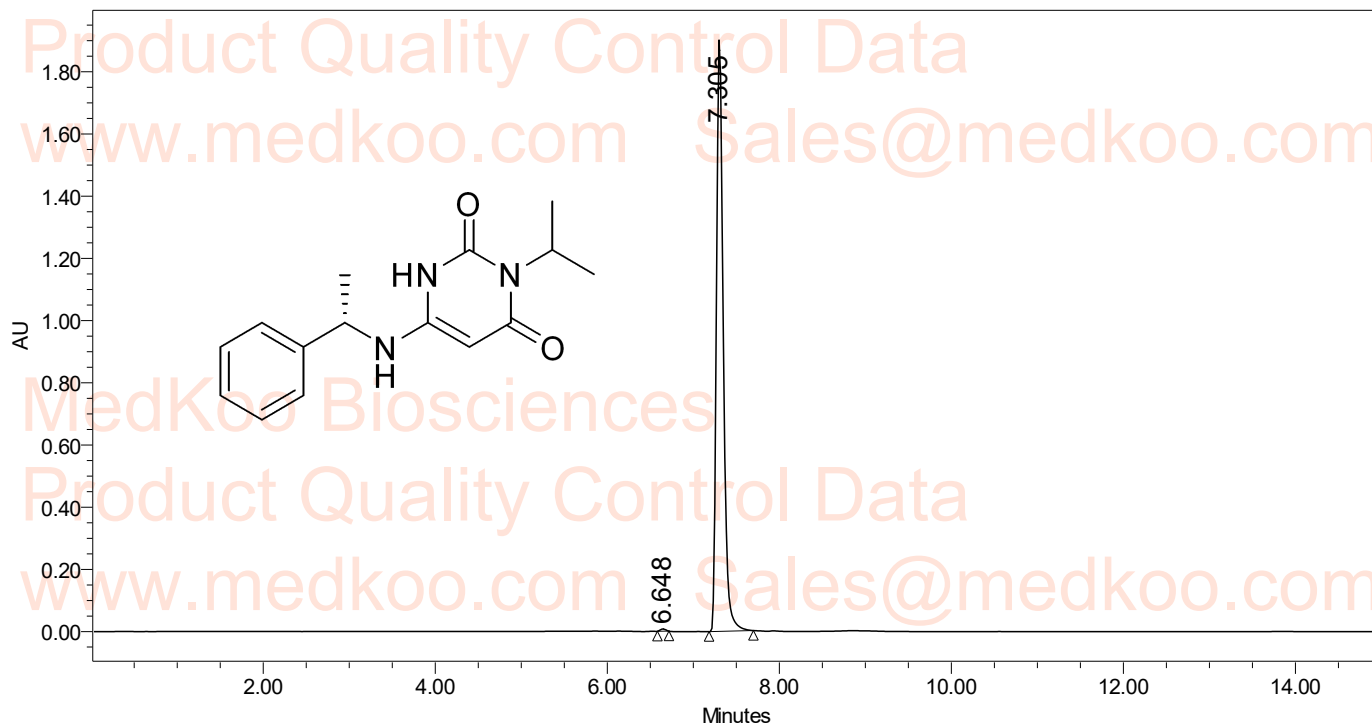
Current Data Parameters
 NAME 1642288-47-8
 EXPNO 1
 PROCNO 1
 F2 - Acquisition Parameters
 INSTRUM spect
 PROBHD 5 mm PABBO BB/
 PULPROG zg30
 TD 65536
 SOLVENT DMSO
 NS 16
 DS 2
 SWH 8012.820 Hz
 FIDRES 0.122266 Hz
 AQ 4.0894465 sec
 RG 63.88
 DW 62.400 usec
 DE 6.50 usec
 TE 294.3 K
 D1 1.00000000 sec
 TD0 1
 ===== CHANNEL f1 =====
 SFO1 400.1324710 MHz
 NUC1 1H
 P1 10.00 usec
 PLW1 17.00000000 W
 F2 - Processing parameters
 SI 65536
 SF 400.1299994 MHz
 WDW EM
 SSB 0
 LB 0.30 Hz
 GB 0
 PC 1.00



Mavacamten HPLC Analysis

SAMPLE INFORMATION

| | | | |
|-------------------|--|------------------|-------------------|
| Sample Name: | 1642288-47-8 | Acquired By: | System |
| Channel Name: | 254.0nm | Method Column: | 150mm x 4.6mm 5um |
| Vial: | 116 | Acq. Method Set: | ACID 003%H3PO4 |
| Injection #: | 1 | Moble Phase A: | 0.03% H3PO4 |
| Injection Volume: | 3.00 ul | Moble Phase B: | ACN |
| Run Time: | 15.0 Minutes | Flow: | 1.0 mL/min |
| Gradient: | 0min B:10% 2min B:10% 7min B:90% 12min B:90% 12.2min B:10% 15min B:10% | | |



| | RT | Height | Area | % Area |
|---|-------|---------|----------|--------|
| 1 | 6.648 | 6770 | 29825 | 0.28 |
| 2 | 7.305 | 1893546 | 10516548 | 99.72 |

MedKoo Cat#: 527002

Name: Mavacamten

CAS#: 1642288-47-8

Lot#: T22D06P10

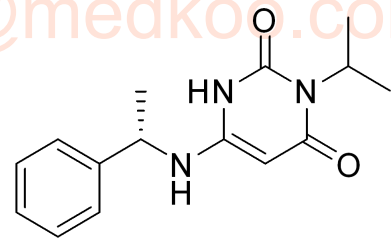
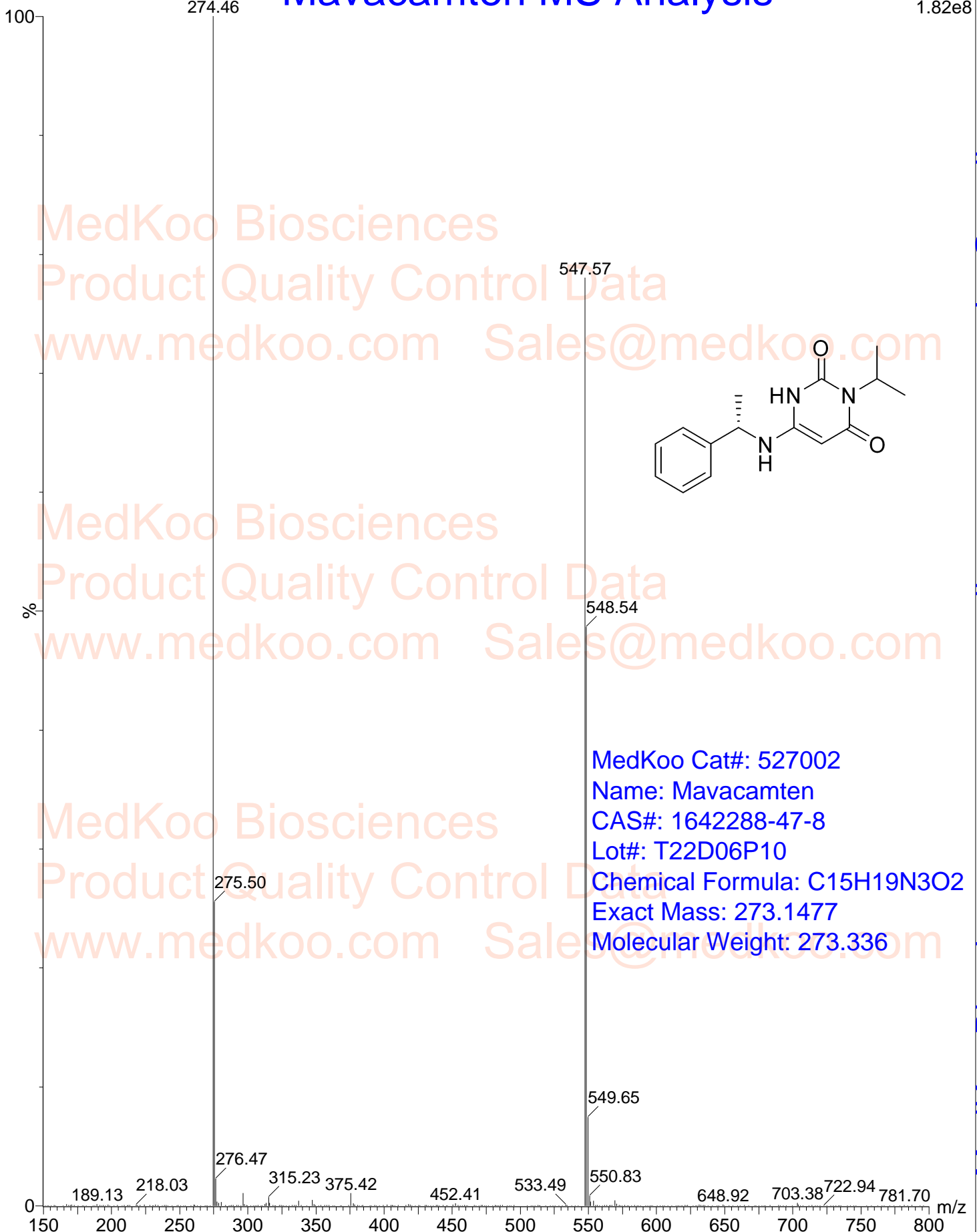
Chemical Formula: C₁₅H₁₉N₃O₂

Exact Mass: 273.1477

Molecular Weight: 273.336

Mavacamten MS Analysis

1: Scan ES+
1.82e8



MedKoo Cat#: 527002
Name: Mavacamten
CAS#: 1642288-47-8
Lot#: T22D06P10
Chemical Formula: C₁₅H₁₉N₃O₂
Exact Mass: 273.1477
Molecular Weight: 273.336

sales@medkoo.com

www.medkoo.com

MedKoo Biosciences