

MV1, CDCl3

7.59  
7.56  
7.27  
7.26  
7.24  
7.22  
7.20  
6.75  
6.73

5.38  
5.36  
5.33

4.48  
4.46  
4.44  
4.36  
4.34

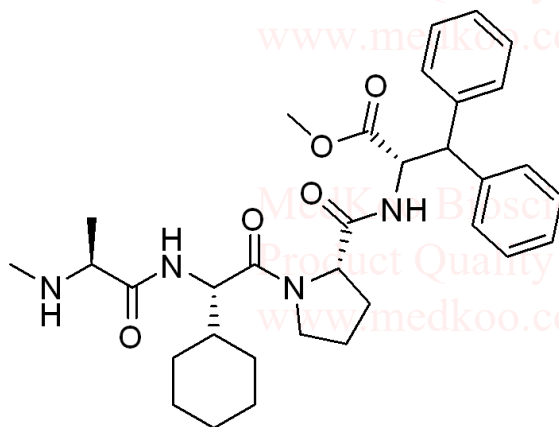
3.68  
3.66  
3.64  
3.46  
3.45  
3.38  
3.34  
3.32  
3.02  
3.01

2.33  
2.09  
2.08

1.78  
1.73  
1.69  
1.58  
1.26  
1.20  
1.18  
1.13  
0.99  
0.96

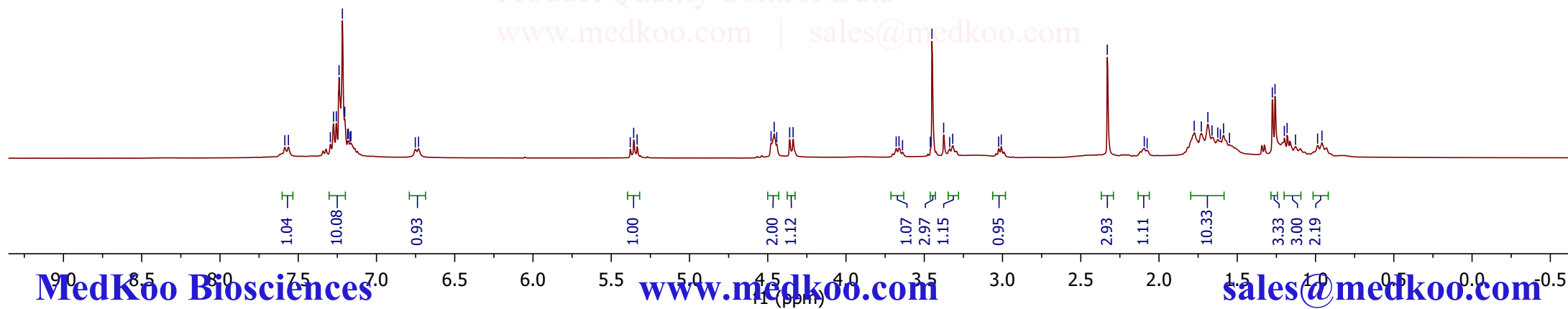
# MV1 HNMR Analysis, Solvent=DMSO

MedKoo Biosciences  
Product Quality Control Data  
www.medkoo.com | sales@medkoo.com



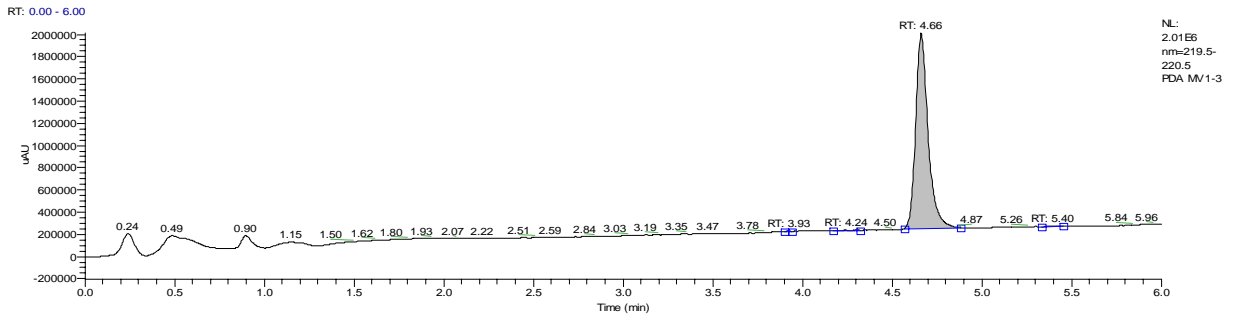
MedKoo Cat#: 562080  
Name: MV1  
CAS#: 1001600-54-9  
Lot#: YXM200213  
Chemical Formula: C33H44N4O5  
Exact Mass: 576.3312  
Molecular Weight: 576.73

MedKoo Biosciences  
Product Quality Control Data  
www.medkoo.com | sales@medkoo.com

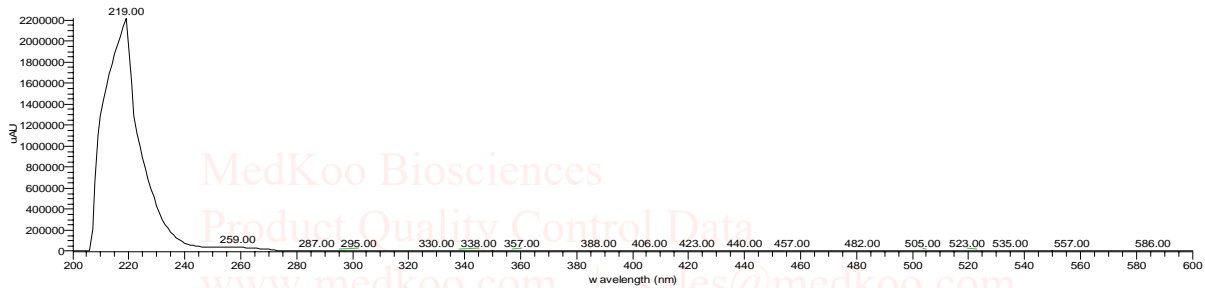


# MV1 HPLC Analysis Report

C:\Xcalibur\data\MV1-3



MV1-3 #1398 RT: 4.66 AV: 1 NL: 2.21E6 microAU



## PEAK

## LIST

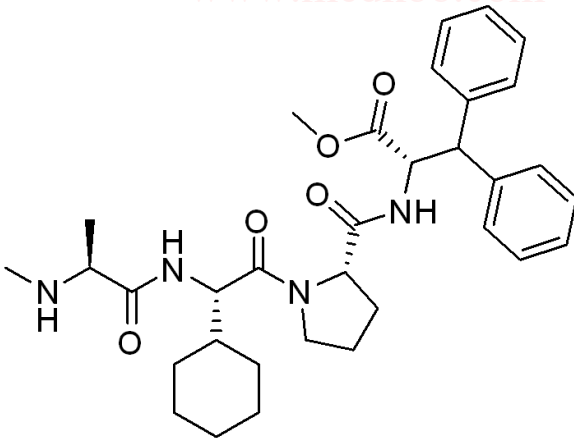
MV1.RAW

RT: 0.00 - 6.00

Number of detected peaks: 4

### Apex

RT	Start RT	End RT	Area	%Area	Height	%Height
3.93	3.9	3.94	4820.965	0.06	3661.822	0.21
4.24	4.17	4.32	14853.22	0.17	2792.447	0.16
4.66	4.57	4.88	8509483	99.54	1758263	99.36
5.4	5.34	5.46	19266.36	0.23	4815	0.27



MedKoo Cat#: 562080

Name: MV1

CAS#: 1001600-54-9

Lot#: YXM200213

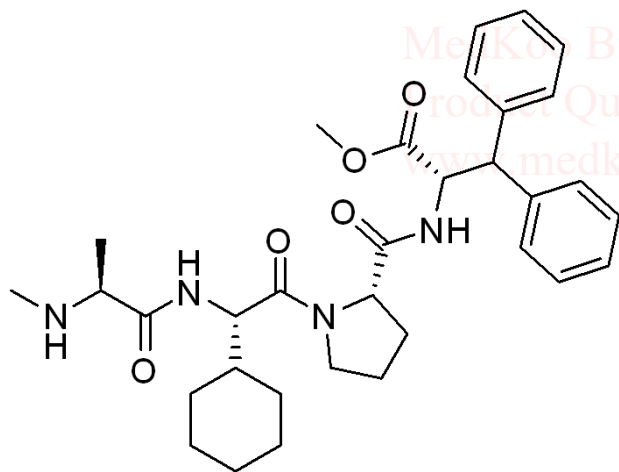
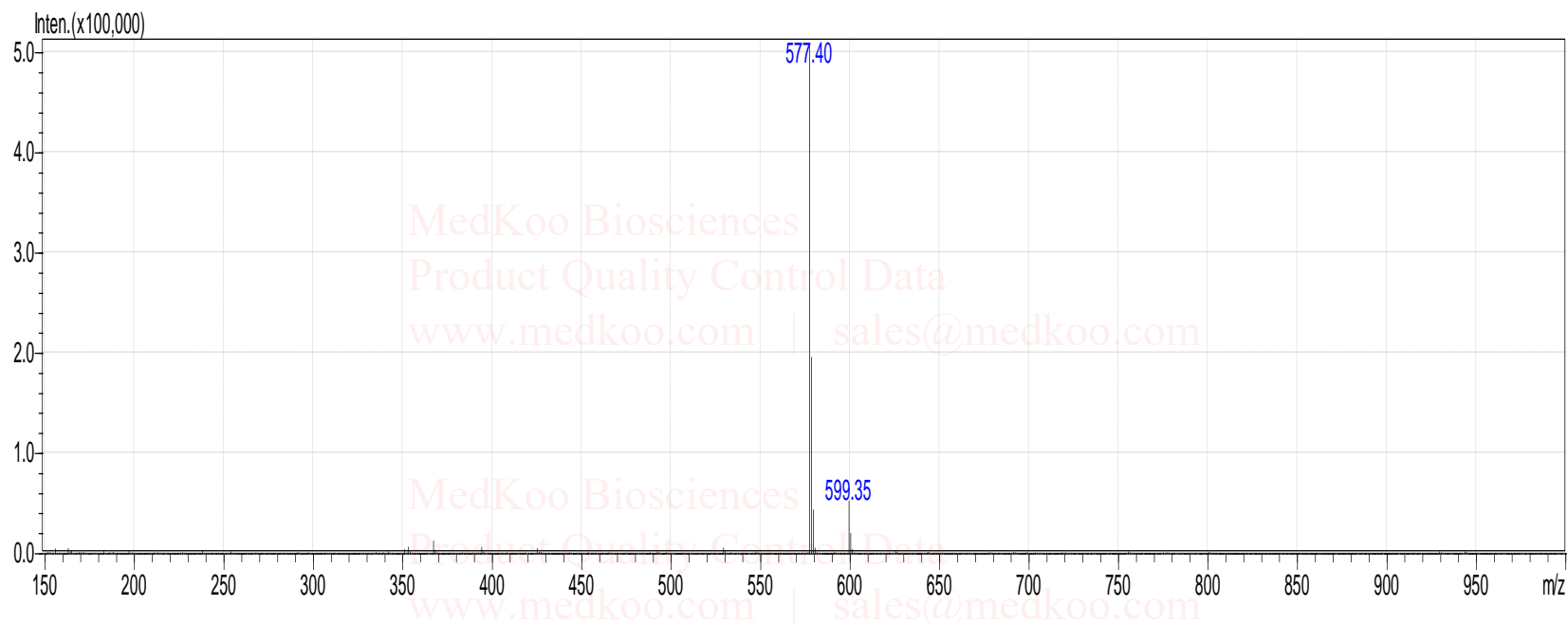
Chemical Formula: C33H44N4O5

Exact Mass: 576.3312

Molecular Weight: 576.73

# MV1 MS Analysis Report

MV1, [M+1]<sup>+</sup>:



MedKoo Cat#: 562080  
Name: MV1  
CAS#: 1001600-54-9  
Lot#: YXM200213  
Chemical Formula: C<sub>33</sub>H<sub>44</sub>N<sub>4</sub>O<sub>5</sub>  
Exact Mass: 576.3312  
Molecular Weight: 576.73