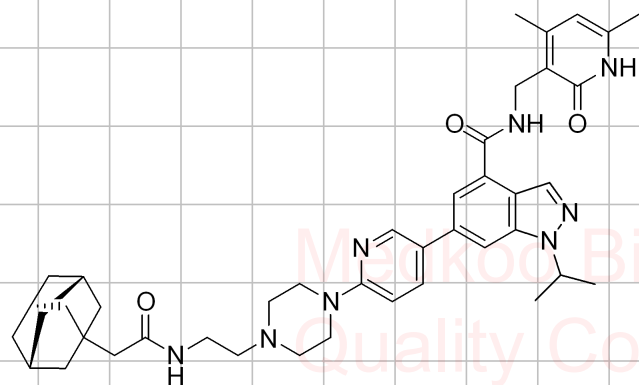
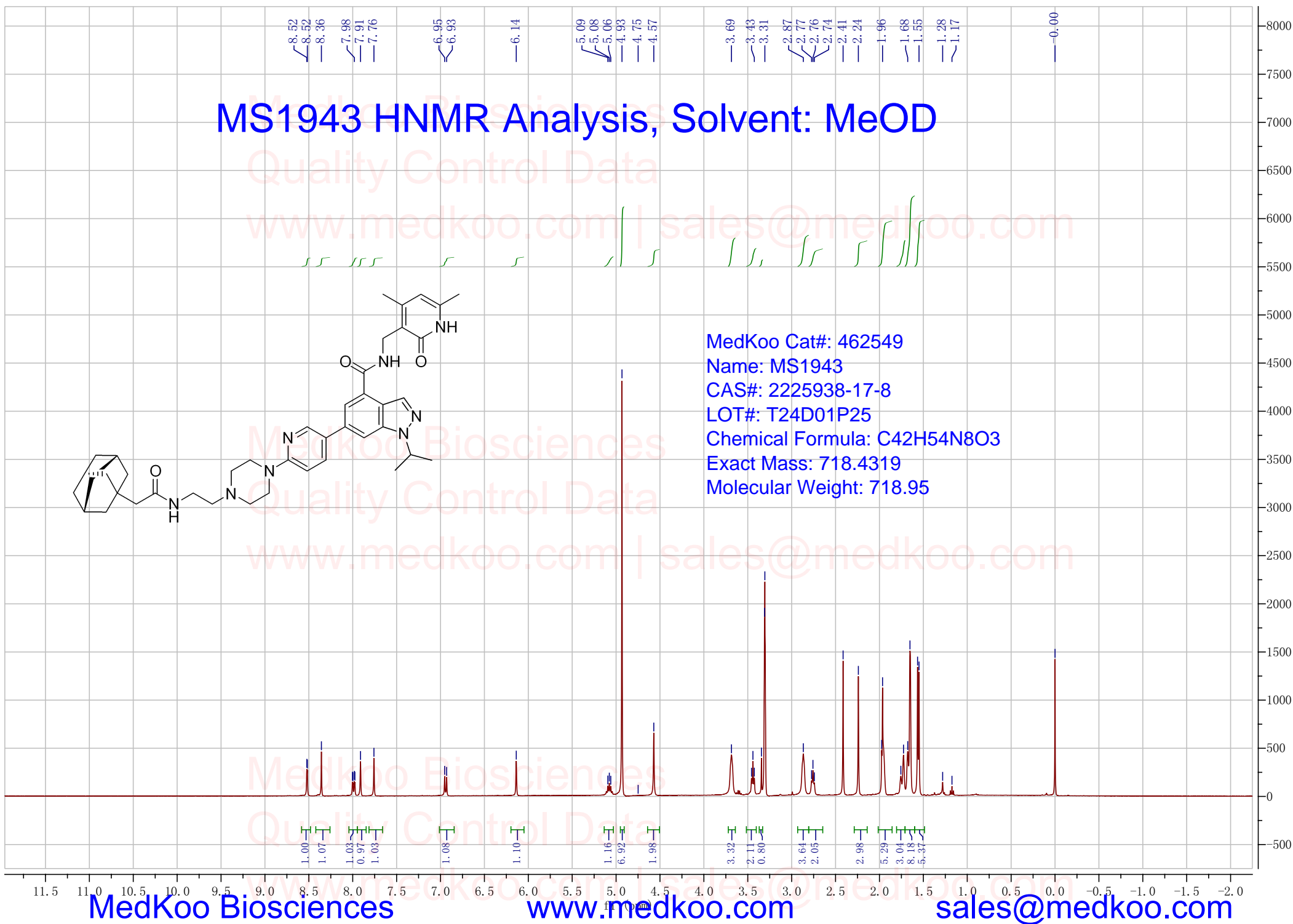


# MS1943 HNMR Analysis, Solvent: MeOD



MedKoo Cat#: 462549  
Name: MS1943  
CAS#: 2225938-17-8  
LOT#: T24D01P25  
Chemical Formula: C<sub>42</sub>H<sub>54</sub>N<sub>8</sub>O<sub>3</sub>  
Exact Mass: 718.4319  
Molecular Weight: 718.95



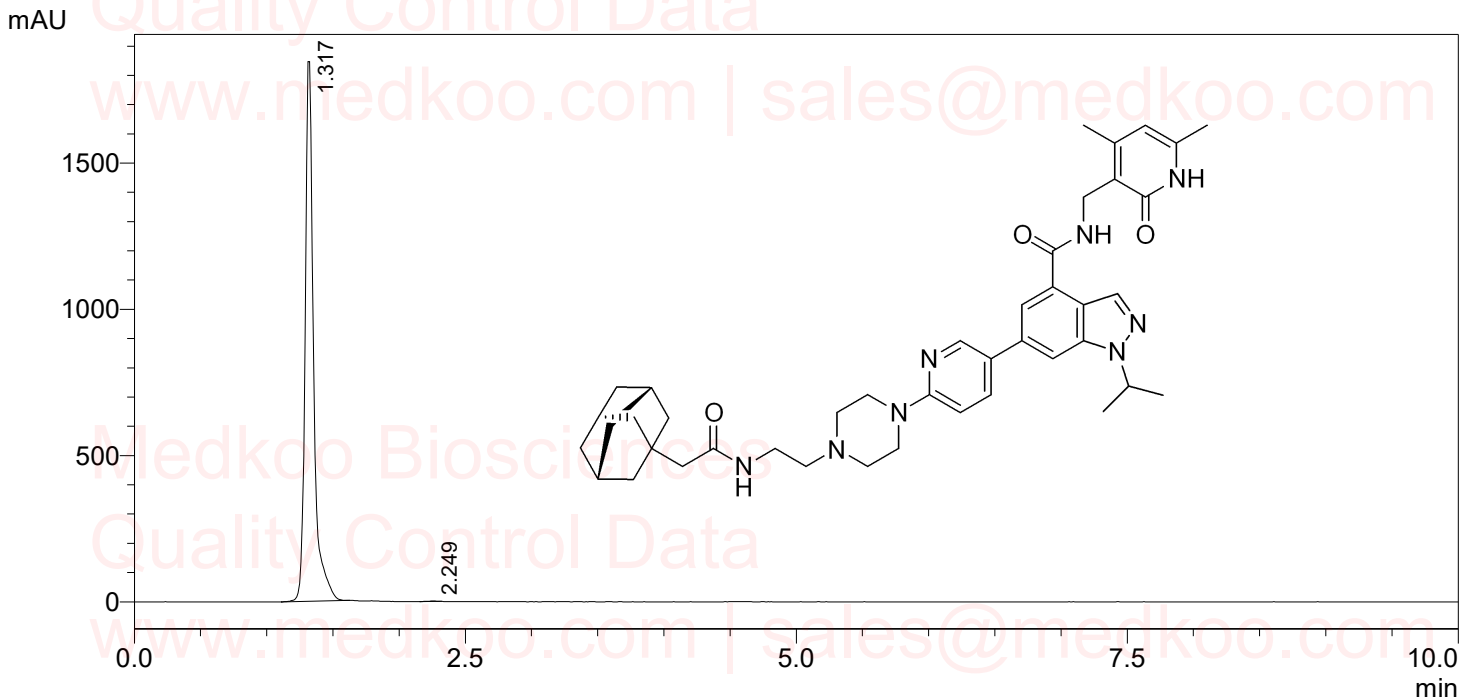
# MS1943 HPLC Analysis

Sample Name : MS1943 2225938-17-8  
Vial# : 1-16

Injection Volume : 1 uL

Data Filename : D:\DATA\MS1943 2225938-17-8.lcd  
Method Filename : C:\LabSolutions\Data\Project1\DENGDU.lcm

FLOW RATE: 1ML/MIN  
COLUMN: AGILENT ECLIPSE XDB-C18 150\*4.6MM 5UM  
COLUME TEMPERATURE: 25  
GRADIENT PROGRAMME:  
TIME(MIN) MOBILE PHASE-A(H2O+0.05%CF3COOH) MOBILE PHASE-B(CH3OH+0.05%CF3COOH)  
0 20 80  
10 20 80



PDA Ch1 214nm

Peak#	Ret. Time	Height	Height%	Area	Area%
1	1.317	1845011	99.928	8179119	99.907
2	2.249	1324	0.072	7608	0.093
总计		1846335	100.000	8186727	100.000

MedKoo Cat#: 462549

Name: MS1943

CAS#: 2225938-17-8

LOT#: T24D01P25

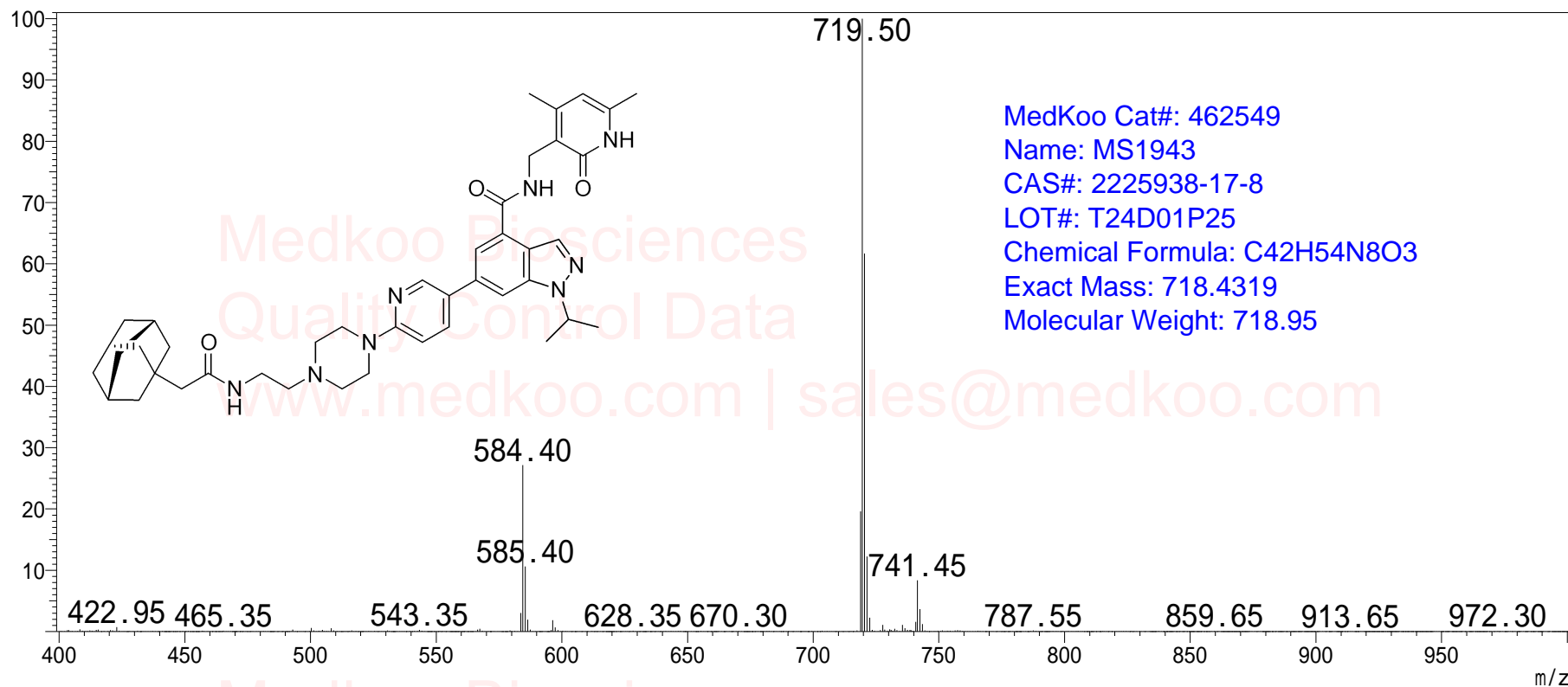
Chemical Formula: C42H54N8O3

Exact Mass: 718.4319

Molecular Weight: 718.95

# MS1943 MS Analysis

Sample Name : MS1943 2225938-17-8  
User : System Administrator  
Sample Type : Unknown  
Tray # : 1  
Vial # : 16  
Inj. Volume : 1  
Data File : MS1943 2225938-17-8.lcd  
Method File : DENGDU.lcm



MedKoo Cat#: 462549  
Name: MS1943  
CAS#: 2225938-17-8  
LOT#: T24D01P25  
Chemical Formula: C42H54N8O3  
Exact Mass: 718.4319  
Molecular Weight: 718.95