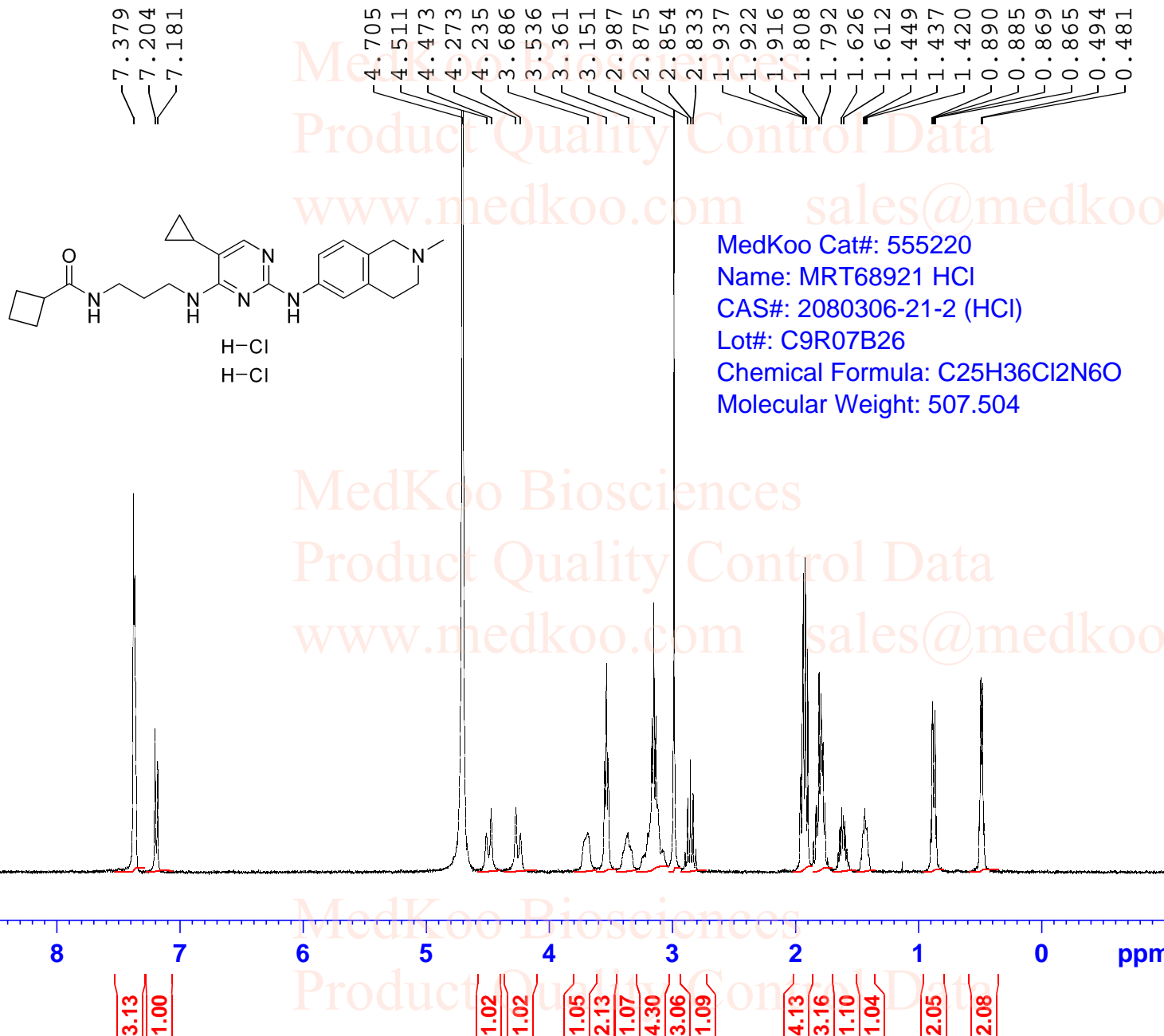


MRT68921 HCl HNMR Analysis, Solvent: D2O



MedKoo Cat#: 555220
 Name: MRT68921 HCl
 CAS#: 2080306-21-2 (HCl)
 Lot#: C9R07B26
 Chemical Formula: C₂₅H₃₆Cl₂N₆O
 Molecular Weight: 507.504

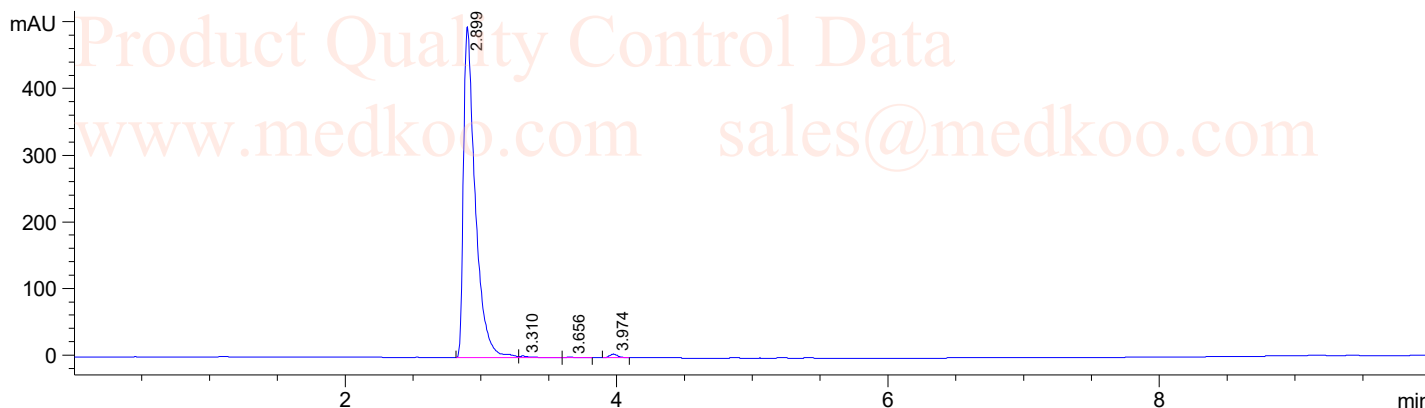
Current Data Parameters
 NAME MRT68921-2HCl
 EXPNO 1
 PROCNO 1
 F2 - Acquisition Parameters
 INSTRUM spect
 PROBHD 5 mm PADUL 13C
 PULPROG zg30
 TD 65536
 SOLVENT D2O
 NS 16
 DS 2
 SWH 8012.820 Hz
 FIDRES 0.122266 Hz
 AQ 4.0894465 sec
 RG 199.46
 DW 62.400 usec
 DE 6.50 usec
 TE 0 K
 D1 1.0000000 sec
 TD0 1
 ===== CHANNEL f1 =====
 SF01 400.1324710 MHz
 NUC1 1H
 P1 10.00 usec
 PLW1 20.0000000 W
 F2 - Processing parameters
 SI 65536
 SF 400.1300000 MHz
 WDW EM
 SSB 0
 LB 0.30 Hz
 GB 0
 PC 1.00

MRT68921 HCl HPLC Analysis

Sample Name : MRT68921
Acq. Operator : 1
Spec. Reported : Integration

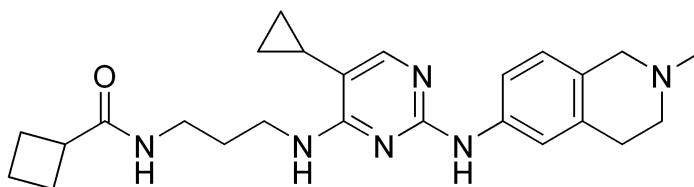
Location : P1-A-08

Inj : 0
Inj Volume : 5 ul



Integration Results for DAD1 B, Sig=254,4 Ref=off

RetTim	Width	Area	Height	Area%
2.90	0.09	2993.95	498.57	98.55
3.31	0.08	15.70	2.56	0.52
3.66	0.06	4.52	1.13	0.15
3.97	0.07	23.81	5.51	0.78



H-Cl

H-Cl

MedKoo Cat#: 555220

Name: MRT68921 HCl

CAS#: 2080306-21-2 (HCl)

Lot#: C9R07B26

Chemical Formula: C₂₅H₃₆Cl₂N₆O

Molecular Weight: 507.504

