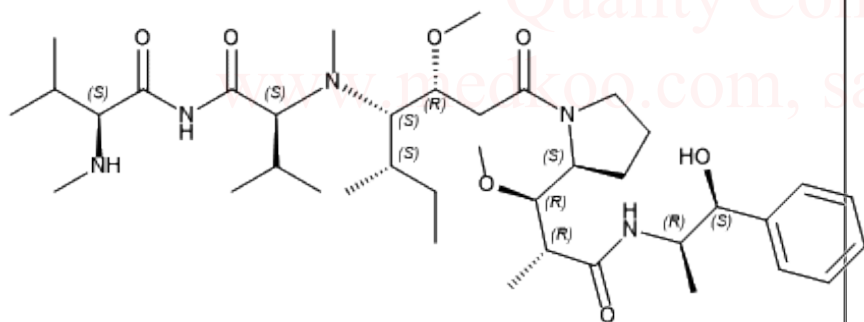
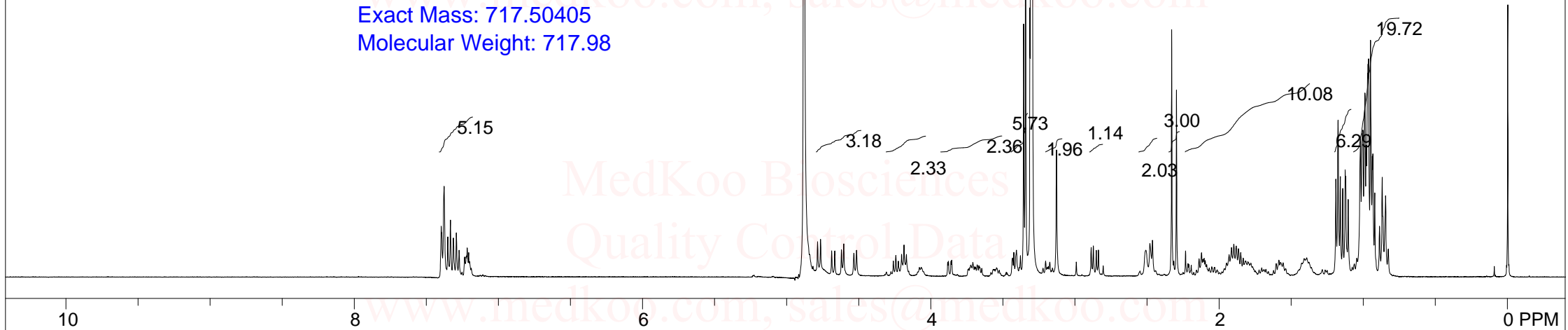


4.818
4.785
4.764
4.687
4.665
4.619
4.603
4.533
4.515
4.259
4.242
4.224
4.201
4.186
4.169
4.079
4.065
3.882
3.877
3.859
3.854
3.721
3.708
3.695
3.689
3.678
3.666
3.659
3.646
3.543
3.432
3.423
3.406
3.386
3.378
3.356
3.342
3.312
3.308
3.304
3.300
3.296
3.222
3.203
3.193
3.184
3.175
3.155
3.128
2.991
2.887
2.872
2.852
2.837
2.804
2.509
2.480
2.462
2.329
2.315
2.296
2.233
2.216
2.211
2.194
2.139
2.122
2.113
2.104
2.097
2.086
2.069
2.051
2.035
2.031
1.949
1.931
1.915
1.899
1.881

MMAE HNMR Analysis, Solvent = MeOD



MedKoo Cat#: 120202
 Name: MMAE
 CAS#: 474645-27-7
 Lot#: T20D04P14
 Chemical Formula: C₃₉H₆₇N₅O₇
 Exact Mass: 717.50405
 Molecular Weight: 717.98



NMRB003, MeOD,

F1: 400.232	F2: 1.000	SW1: 8224	OF1: 2463.4	PTS1d: 32768
EX: zg30	MedKoo Biosciences	PD: 1.00	www.medkoo.com	sales@medkoo.com

MedKoo Biosciences

www.medkoo.com

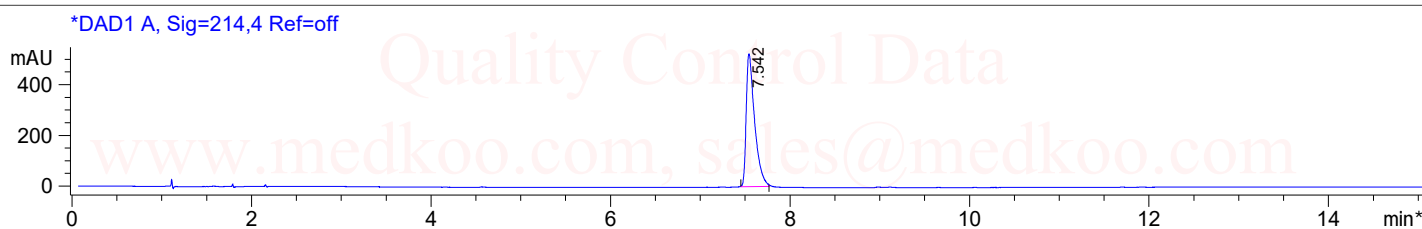
LB: 0.0

sales@medkoo.com

Nuts - \$pdata

MMAE HPLC Analysis

Sample Name : MMAE Location : P2-B-01
Acq. Operator : Inj : 1
Spec. Reported : MS Integration Inj Volume : 2.1 ul
Acq. Method : C:\CHEM32\1\METHODS\2-POS-15MIN.M
Analysis Method : C:\CHEM32\1\METHODS\2-POS-15MIN.M
Sample Info : Easy-Access Method: '2-POS-15MIN'
Method Info : Mobile Phase: A:Water(10mM NH4HCO3) B:ACN
Gradient: 5%B increase to 95%B within 8min,95%B for 7min
Flow Rate: 1.0ml/min
Column:Xbridge C18,3.5um,4.6*150mm
Column Temperature:45C
Detection:UV(214,4nm) and MS(ESI,Pos mode,110 to 1500 amu)



Integration Results for DAD1 A, Sig=214,4 Ref=off

RetTim	Width	Area	Height	Area%
7.54	0.10	3406.02	524.15	100.00

MedKoo Cat#: 120202

Name: MMAE

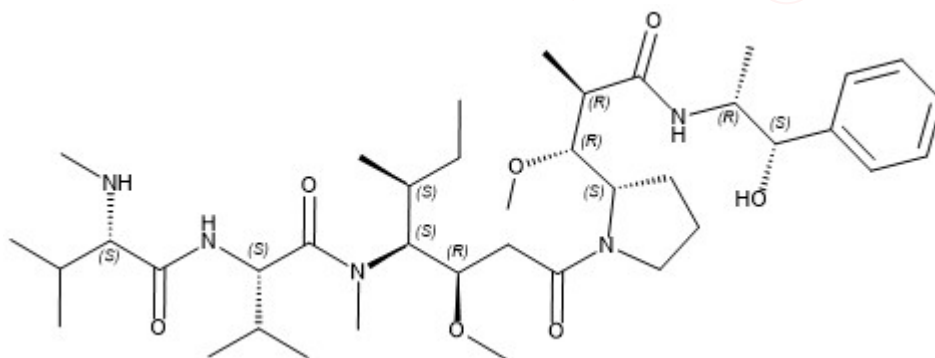
CAS#: 474645-27-7

Lot#: T20D04P14

Chemical Formula: C39H67N5O7

Exact Mass: 717.50405

Molecular Weight: 717.98

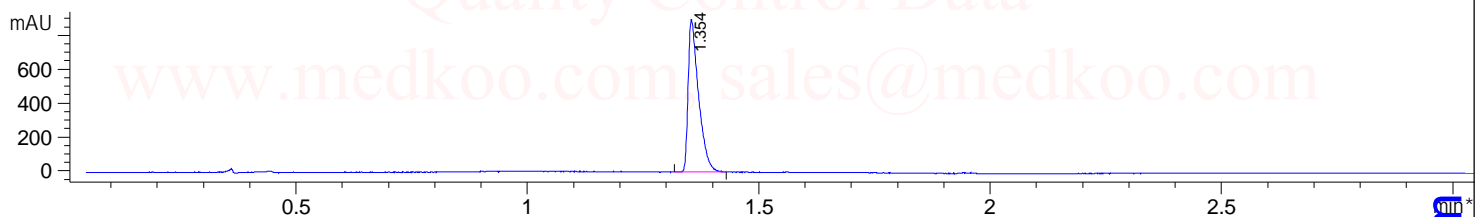


MMAE LC/MS Analysis

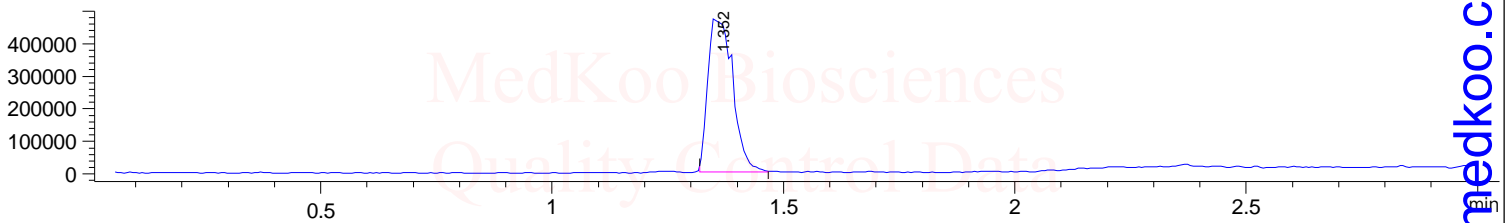
Sample Name : MMAE
Acq. Operator :
Spec. Reported : MS Integration
Acq. Method : D:\METHODS\1-POS-3MIN.M
Analysis Method : D:\METHODS\1-POS-3MIN.M
Sample Info : Easy-Access Method: '1-POS-3MIN.M'
Method Info : Mobile Phase: A: water(0.01%TFA) B: ACN(0.01%TFA)
 Gradient: 5%B increase to 95%B within 1.3 min, 95%B for 1.7 min.
 Flow Rate: 2.0ml/min
 Column: Sunfire C18, 4.6*50mm, 3.5um
 Column Temperature: 50 C
 Detection: UV(214,4nm) and MS(ESI, Pos mode, 110 to 1000 amu)

Tgt Mass(EZX) :
Location : P1-C-03
Inj : 1
Inj Volume : 2 ul

*DAD1 A, Sig=214,4 Ref=off

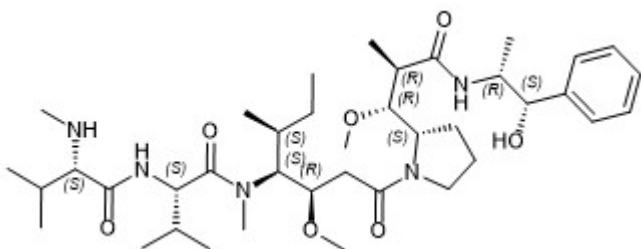
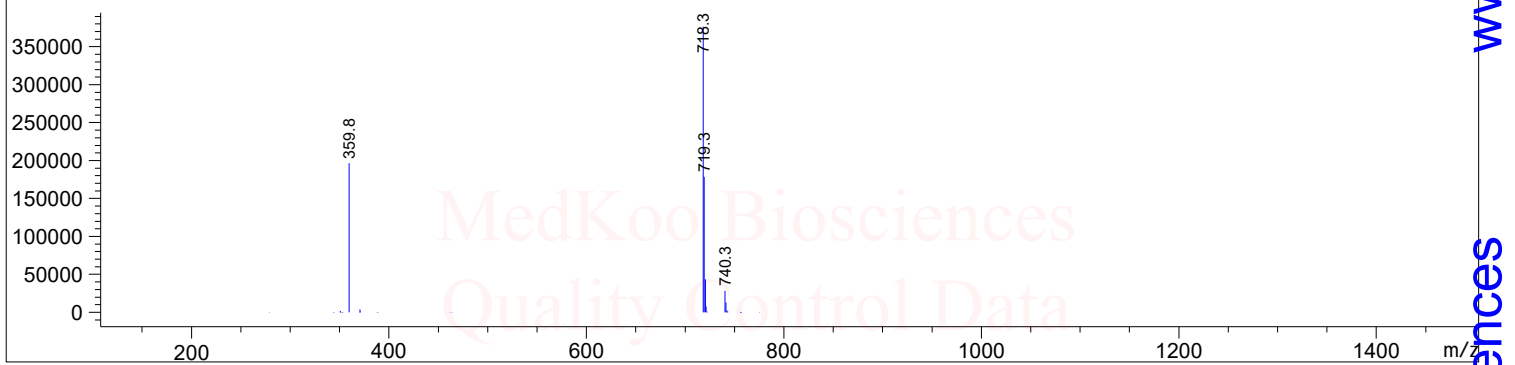


MSD1 TIC, MS File ES-API, Pos, Scan, Frag: 70



Ret. Time: 1.35 <<<< POSITIVE SPECTRA >>>>

ES-API Positive



MedKoo Cat#: 120202
 Name: MMAE
 CAS#: 474645-27-7
 Lot#: T20D04P14
 Chemical Formula: C39H67N5O7
 Exact Mass: 717.50405
 Molecular Weight: 717.98