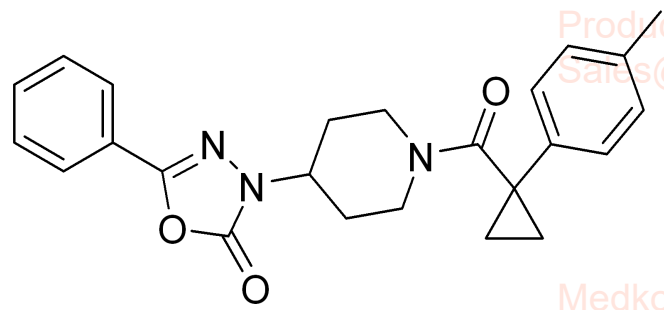


7.794  
7.791  
7.776  
7.770  
7.614  
7.609  
7.596  
7.594  
7.583  
7.576  
7.565  
7.558  
7.546  
7.542  
7.535  
7.160  
7.140  
7.090  
7.069

4.463  
4.454  
4.443  
4.432  
4.421  
4.197  
4.187  
4.177  
4.169  
4.159  
4.148  
4.141  
4.131  
4.121  
4.077  
4.067  
4.053  
4.029  
3.342  
2.988  
2.969  
2.935  
2.921  
2.913  
2.890  
2.855  
2.842  
2.732  
2.511  
2.507  
2.502  
2.498  
2.493  
2.262  
1.900  
1.895  
1.764  
1.703  
1.692  
1.683  
1.665  
1.618  
1.608  
1.473  
1.467  
1.463  
1.454  
1.427  
1.420

# ML-191 HNMR Analysis, Solvent: DMSO

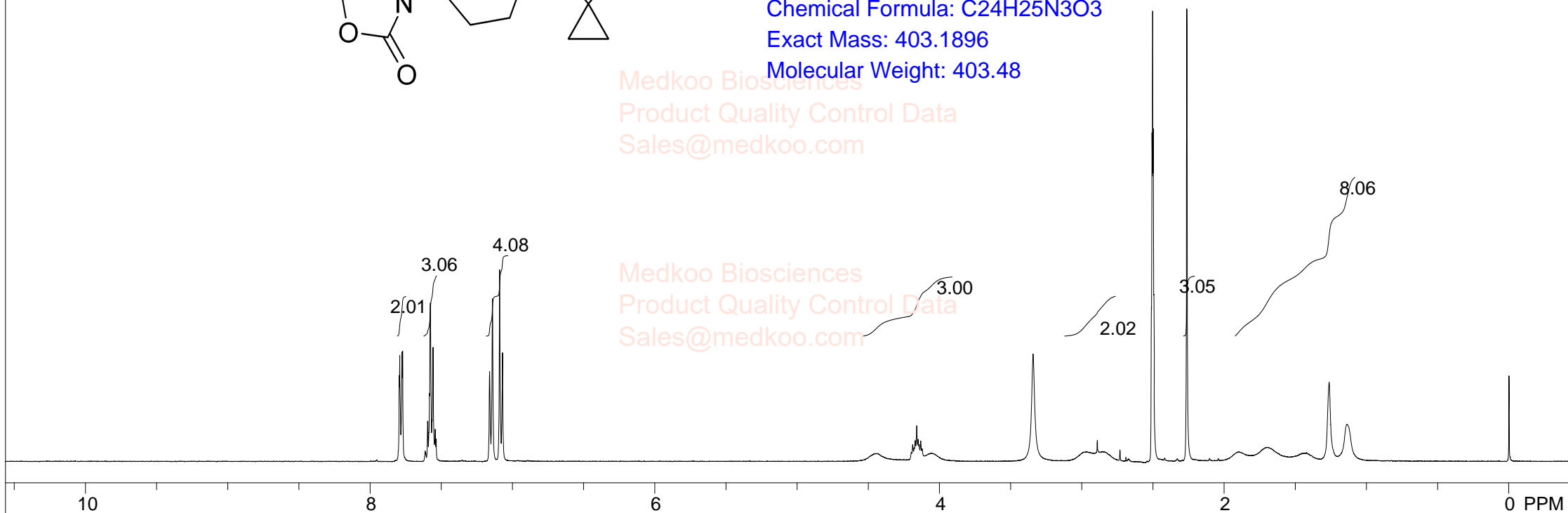


Medkoo Biosciences  
Product Quality Control Data  
Sales@medkoo.com

MedKoo Cat#: 555950  
Name: ML191  
CAS#: 931695-79-3  
Lot#: T21D04P07  
Chemical Formula: C<sub>24</sub>H<sub>25</sub>N<sub>3</sub>O<sub>3</sub>  
Exact Mass: 403.1896  
Molecular Weight: 403.48

Medkoo Biosciences  
Product Quality Control Data  
Sales@medkoo.com

Medkoo Biosciences  
Product Quality Control Data  
Sales@medkoo.com

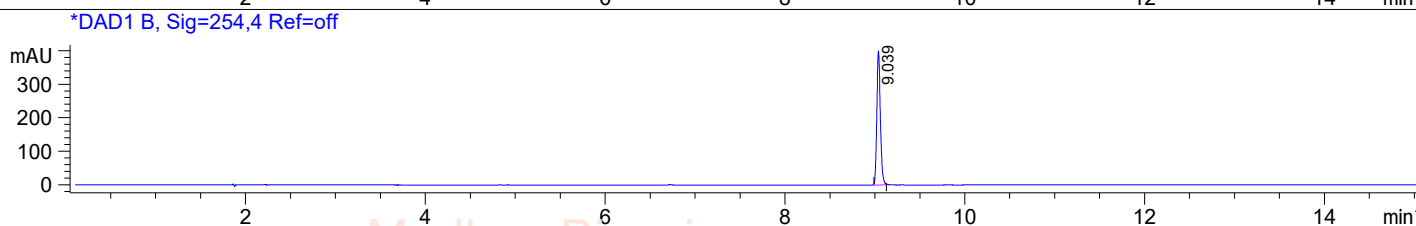
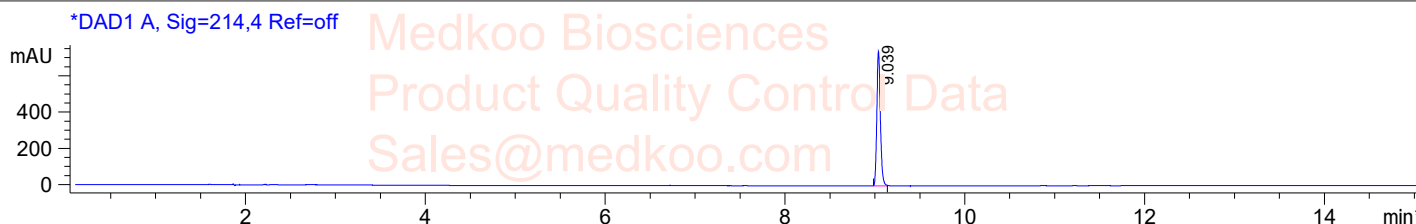


NMRB003, DMSO,

F1: 400.232	F2: 1.000	SW1: 8224	OF1: 2472.9	PTS1d: 32768
EX: zg30	Medkoo Biosciences	PD: 1.00	www.medkoo.com	Sales@medkoo.com

# ML-191 HPLC Analysis

Sample Name : ML191  
Acq. Operator :  
Spec. Reported : MS Integration  
Acq. Method : C:\CHEM32\1\METHODS\2-POS-15MIN.M  
Analysis Method : C:\CHEM32\1\METHODS\2-POS-15MIN.M  
Sample Info : Easy-Access Method: '2-POS-15MIN'  
Method Info : Mobile Phase: A:Water(10mM NH4HCO3) B:ACN  
Gradient: 5%B increase to 95%B within 8min,95%B for 7min  
Flow Rate: 1.0ml/min  
Column:Xbridge C18,3.5um,4.6\*150mm  
Column Temperature:45C  
Detection:UV(214,4nm) and MS(ESI,Pos mode,110 to 1500 amu)



Integration Results for DAD1 A, Sig=214,4 Ref=off

RetTim	Width	Area	Height	Area%
9.04	0.04	2030.94	740.32	100.00

Integration Results for DAD1 B, Sig=254,4 Ref=off

RetTim	Width	Area	Height	Area%
9.04	0.04	1088.38	397.79	100.00



MedKoo Cat#: 555950

Name: ML191

CAS#: 931695-79-3

Lot#: T21D04P07

Chemical Formula: C<sub>24</sub>H<sub>25</sub>N<sub>3</sub>O<sub>3</sub>

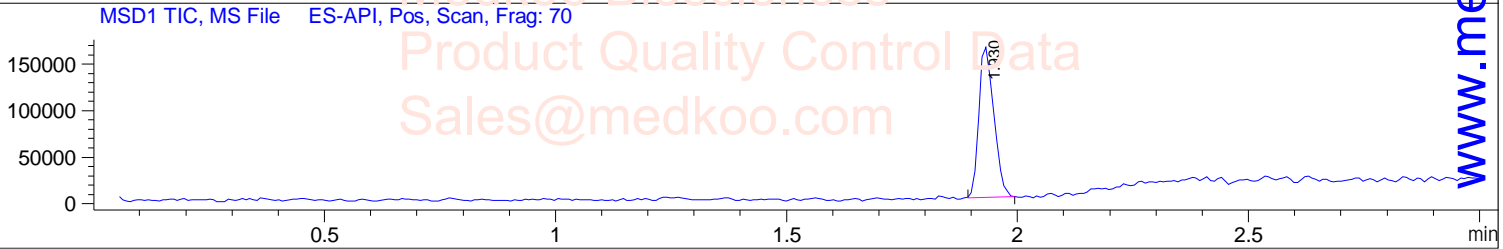
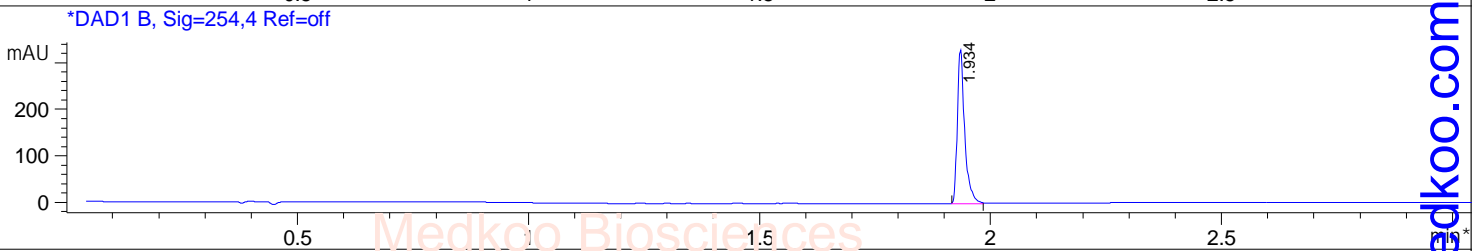
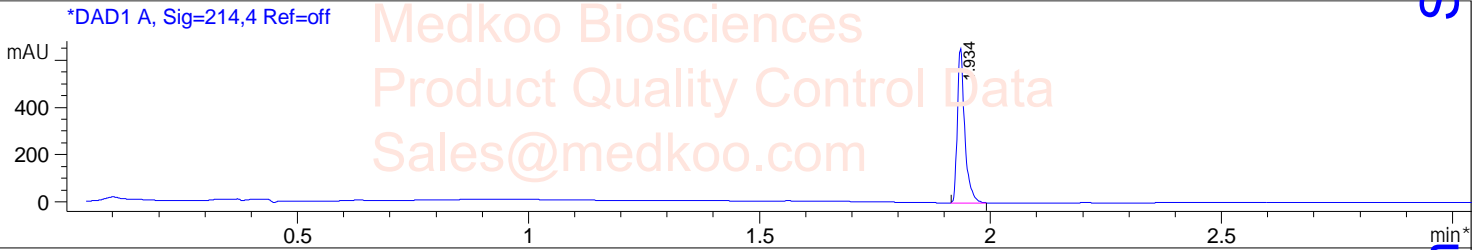
Exact Mass: 403.1896

Molecular Weight: 403.48

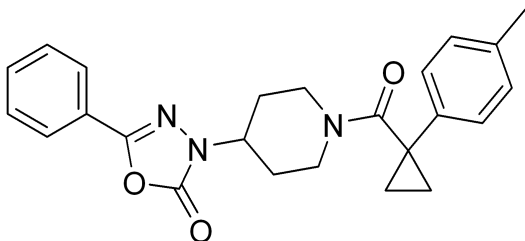
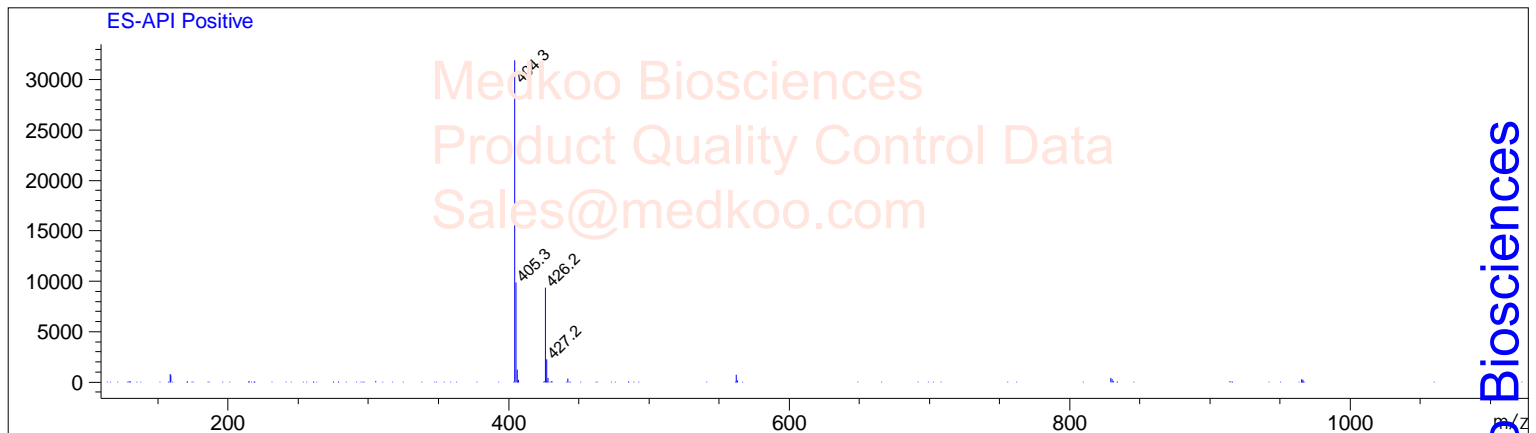
# ML-191 LC/MS Analysis

Sample Name : ML191  
Acq. Operator :  
Spec. Reported : MS Integration  
Acq. Method : D:\METHODS\1-POS-3MIN.M  
Analysis Method : D:\METHODS\1-POS-3MIN.M  
Sample Info : Easy-Access Method: '1-POS-3MIN.M'  
Method Info : Mobile Phase: A: water(0.01%TFA) B: ACN(0.01%TFA)  
Gradient: 5%B increase to 95%B within 1.3 min, 95%B for 1.7 min.  
Flow Rate: 2.0ml/min  
Column: Sunfire C18, 4.6\*50mm, 3.5um  
Column Temperature: 50 C  
Detection: UV(214,4nm) and MS(ESI, Pos mode, 110 to 1200 amu)

Tgt Mass(EZX) :  
Location : P2-E-07  
Inj : 1  
Inj Volume : 1 ul



Ret. Time: 1.93 <<<< POSITIVE SPECTRA >>>>



MedKoo Cat#: 555950  
Name: ML191  
CAS#: 931695-79-3  
Lot#: T21D04P07  
Chemical Formula: C<sub>24</sub>H<sub>25</sub>N<sub>3</sub>O<sub>3</sub>  
Exact Mass: 403.1896  
Molecular Weight: 403.48

Sales@medkoo.com

www.medkoo.com

Medkoo Biosciences