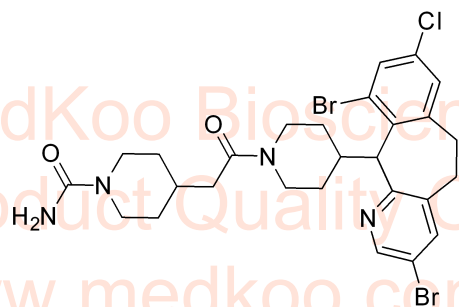
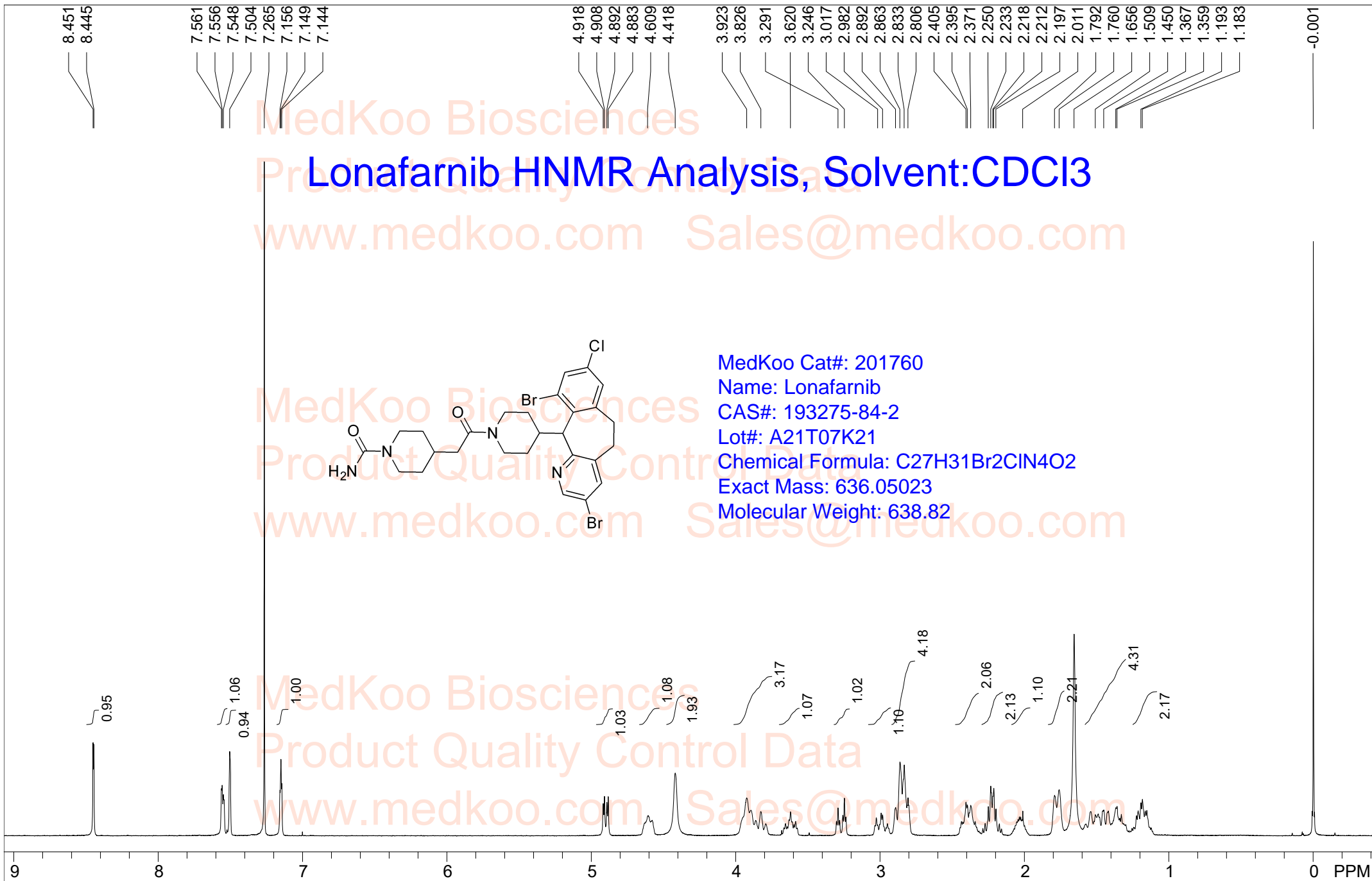


Lonafarnib HNMR Analysis, Solvent:CDCl3



MedKoo Cat#: 201760
Name: Lonafarnib
CAS#: 193275-84-2
Lot#: A21T07K21
Chemical Formula: C₂₇H₃₁Br₂ClN₄O₂
Exact Mass: 636.05023
Molecular Weight: 638.82



CDCl₃

F1: 400.130	F2: 1.000	SW1: 8224	OF1: 2463.1	PTS1d: 32768
EX: zg30	MedKoo Biosciences	PW: 25.00 usec	PD: www.medkoo.com	LB: 0.3 sales@medkoo.com

Lonafarnib HPLC Analysis

Sample Name : 93275-84-2

Method Info : Mobile Phase: A: water(10mM Ammonium hydrogen carbonate) B: ACN

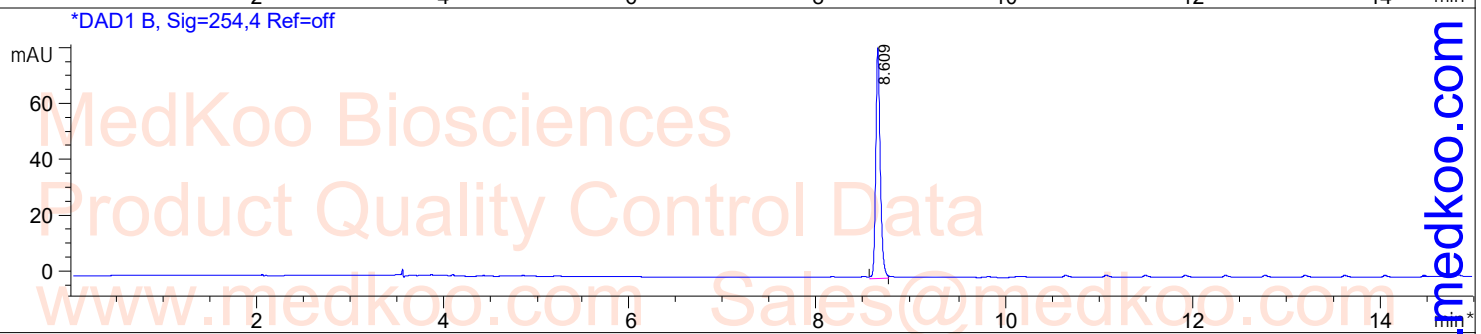
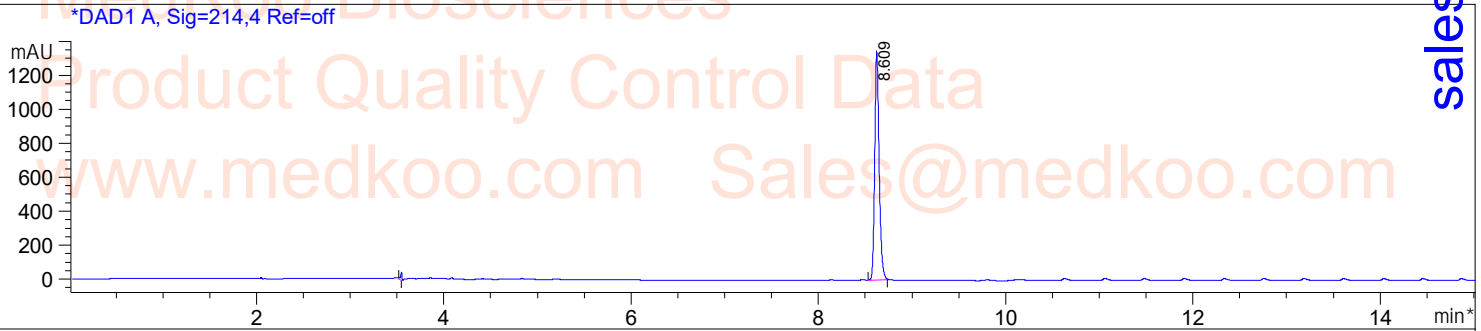
Gradient: 5%-95% B in 8 min, 95%B for 7min.

Flow Rate: 1.0ml/min

Column: XBridge C18, 4.6*150mm, 3.5um

Oven Temperature: 40 C

Mass Range: 110-900 UV: 214nm;254nm

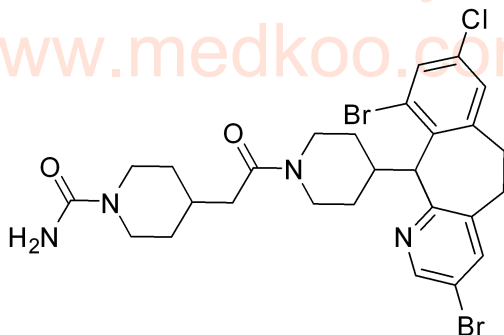


Integration Results for DAD1 A, Sig=214,4 Ref=off

RetTim	Width	Area	Height	Area%
8.61	0.05	4444.23	1341.58	100.00

Integration Results for DAD1 B, Sig=254,4 Ref=off

RetTim	Width	Area	Height	Area%
8.61	0.05	254.23	78.11	100.00



MedKoo Cat#: 201760

Name: Lonafarnib

CAS#: 193275-84-2

Lot#: A21T07K21

Chemical Formula: C₂₇H₃₁Br₂ClN₄O₂

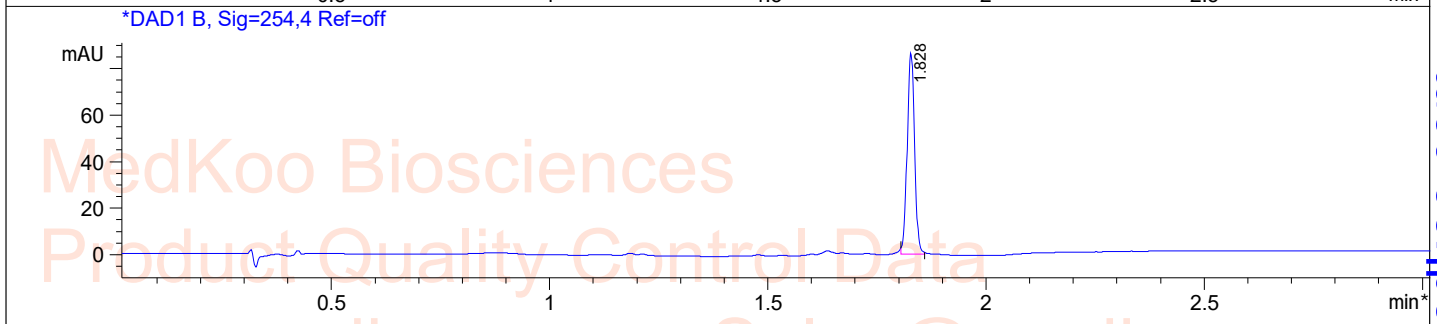
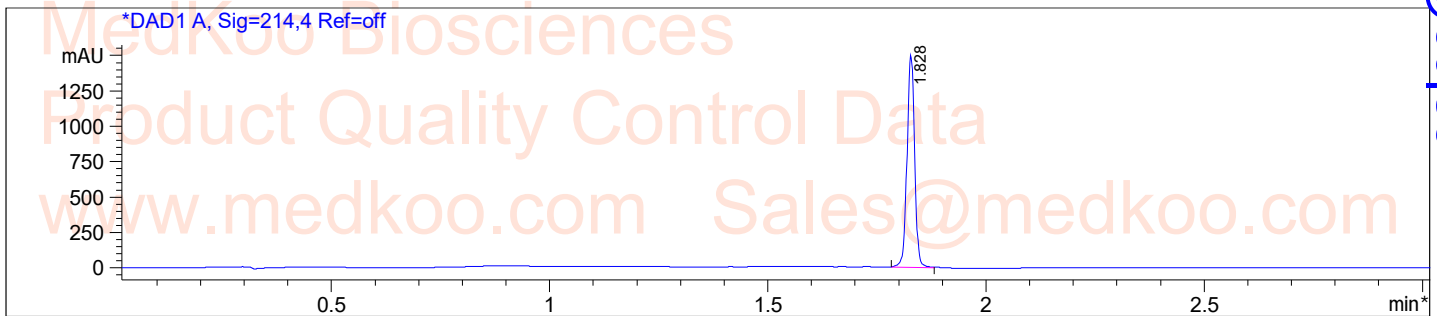
Exact Mass: 636.05023

Molecular Weight: 638.82

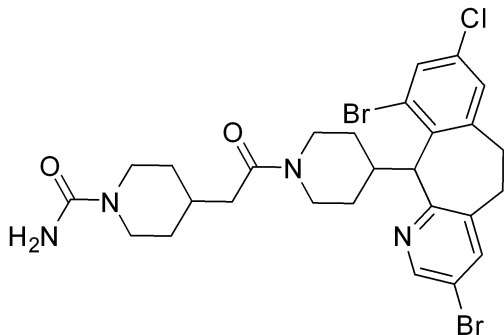
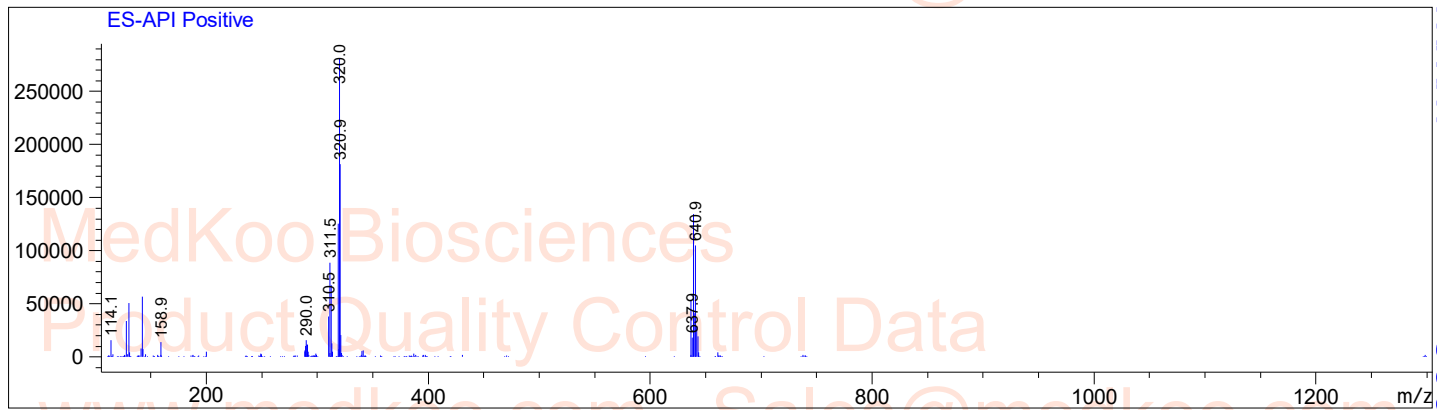
Lonafarnib LC/MS Analysis

Sample Name : 3;5497/:6/4"

Method Info : Mobile Phase : A:water(0.01%TFA) B:ACN(0.01%TFA)
Gradient:5%B increase to 95%B within 1.5min,95%B for 1.5min
Flow Rate :2.0ml/min
Column :SunFire C18 3.5um, 4.6mm*50mm
Column Temperature:50C
Detection:UV(214nm,4nm) and MS(ESI,POS Mode,110-1300amu)



Ret. Time: 1.83 <<<< POSITIVE SPECTRA >>>>



MedKoo Cat#: 201760

Name: Lonafarnib

CAS#: 193275-84-2

Lot#: A21T07K21

Chemical Formula: C₂₇H₃₁Br₂ClN₄O₂

Exact Mass: 636.05023

Molecular Weight: 638.82