

LGD-4033 (Ligandrol) NMR Analysis, Solvent = CDCl₃

PROTON CDCl₃ D:\\ nmr1 38



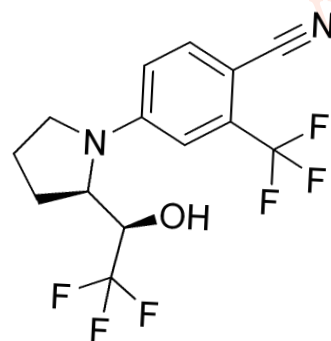
Current Data Parameters
NAME 1165910-22-4
EXPNO 10
PROCNO 1

F2 - Acquisition Parameters

INSTRUM spect
PROBHD 5 mm PABBO BB-
PULPROG zg30
TD 65536
SOLVENT CDCl₃
NS 16
DS 2
SWH 8012.820 Hz
FIDRES 0.122266 Hz
AQ 4.0894465 sec
RG 161
DW 62.400 usec
DE 6.50 usec
TE 301.2 K
D1 1.00000000 sec
TD0 1

===== CHANNEL f1 =====
SFO1 400.1324710 MHz
NUC1 1H
P1 13.00 usec
PLW1 36.00000000 W

F2 - Processing parameters
SI 65536
SF 400.1300000 MHz
WDW no
SSB 0
LB 0 Hz
GB 0
PC 1.00



MedKoo Cat#: 522377

Name: LGD-4033 (Ligandrol)

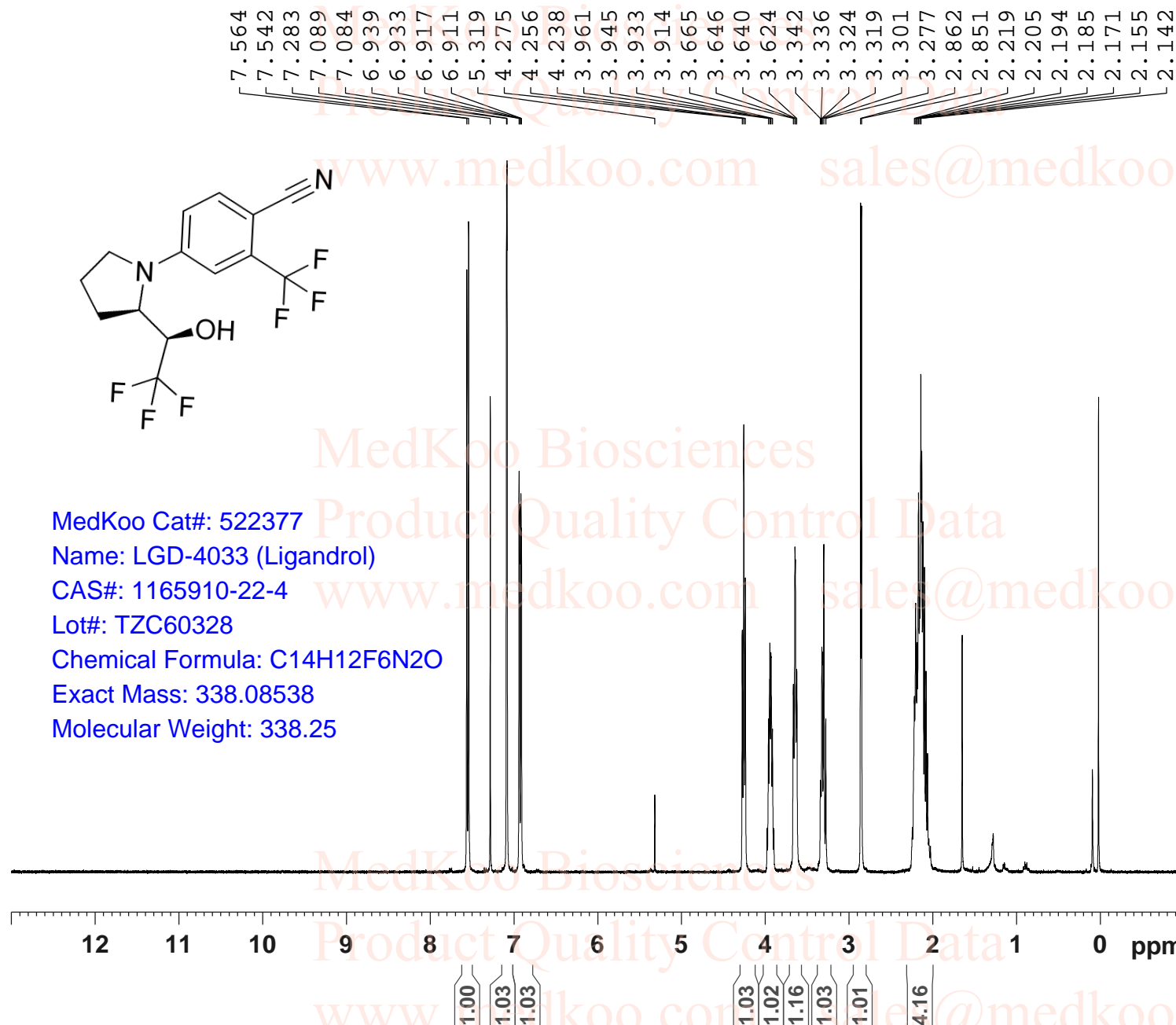
CAS#: 1165910-22-4

Lot#: TZC60328

Chemical Formula: C₁₄H₁₂F₆N₂O

Exact Mass: 338.08538

Molecular Weight: 338.25



MedKoo Biosciences

www.medkoo.com

sales@medkoo.com

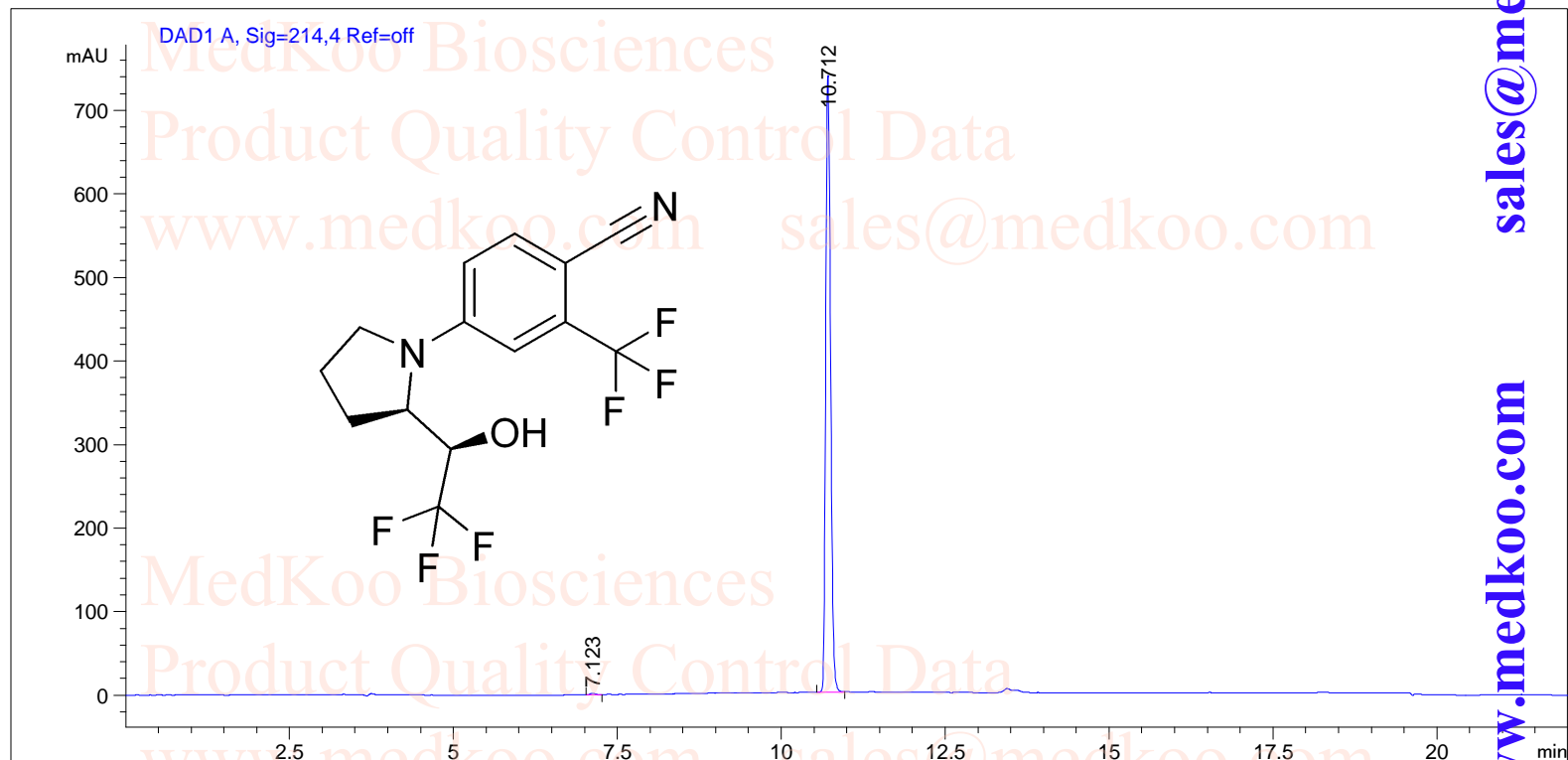
LGD-4033 (Ligandrol) HPLC Analysis

=====

Acq. Operator : System
Acq. Instrument : Instrument 1
Location : Vial 19
Inj Volume : 2.5 µl

Acq. Method : C:\CHEM32\1\METHODS\TEST-KR.M
(modified after loading)

Analysis Method : C:\CHEM32\1\METHODS\TEST-KR.M



=====

Area Percent Report

=====

Sorted By : Signal
Multiplier: : 1.0000
Dilution: : 1.0000
Use Multiplier & Dilution Factor with ISTDs

MedKoo Cat#: 522377
Name: LGD-4033 (Ligandrol)
CAS#: 1165910-22-4
Lot#: TZC60328
Chemical Formula: C₁₄H₁₂F₆N₂O
Exact Mass: 338.08538
Molecular Weight: 338.25

Signal 1: DAD1 A, Sig=214,4 Ref=off

Peak #	RetTime [min]	Type	Width [min]	Area [mAU*s]	Height [mAU]	Area %
1	7.123	BB	0.0811	9.62168	1.77862	0.2520
2	10.712	BB	0.0801	3808.34326	739.74487	99.7480

Totals : 3817.96494 741.52350

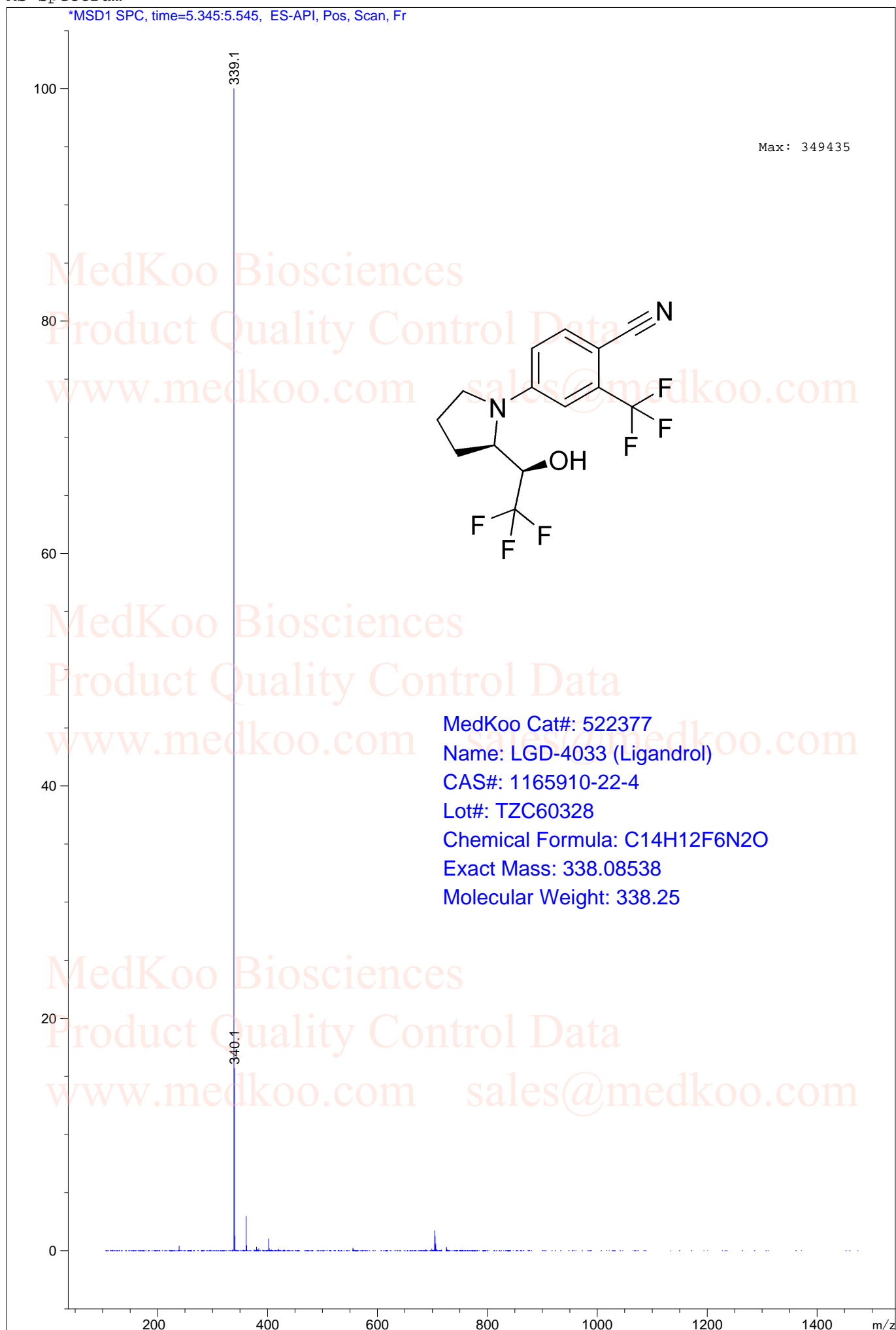
sales@medkoo.com

www.medkoo.com

MedKoo Biosciences

LGD-4033 (Ligandrol) MS Analysis

MS Spectrum



sales@medkoo.com

www.medkoo.com

MedKoo Biosciences