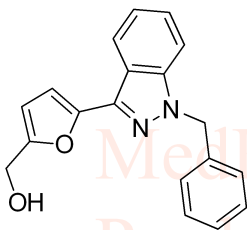
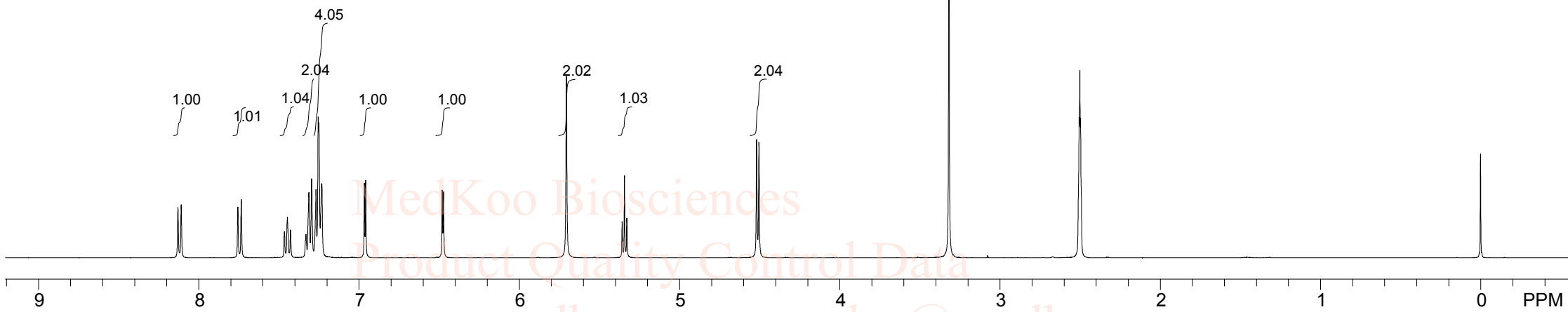




Lificiguat HNMR Analysis in DMSO

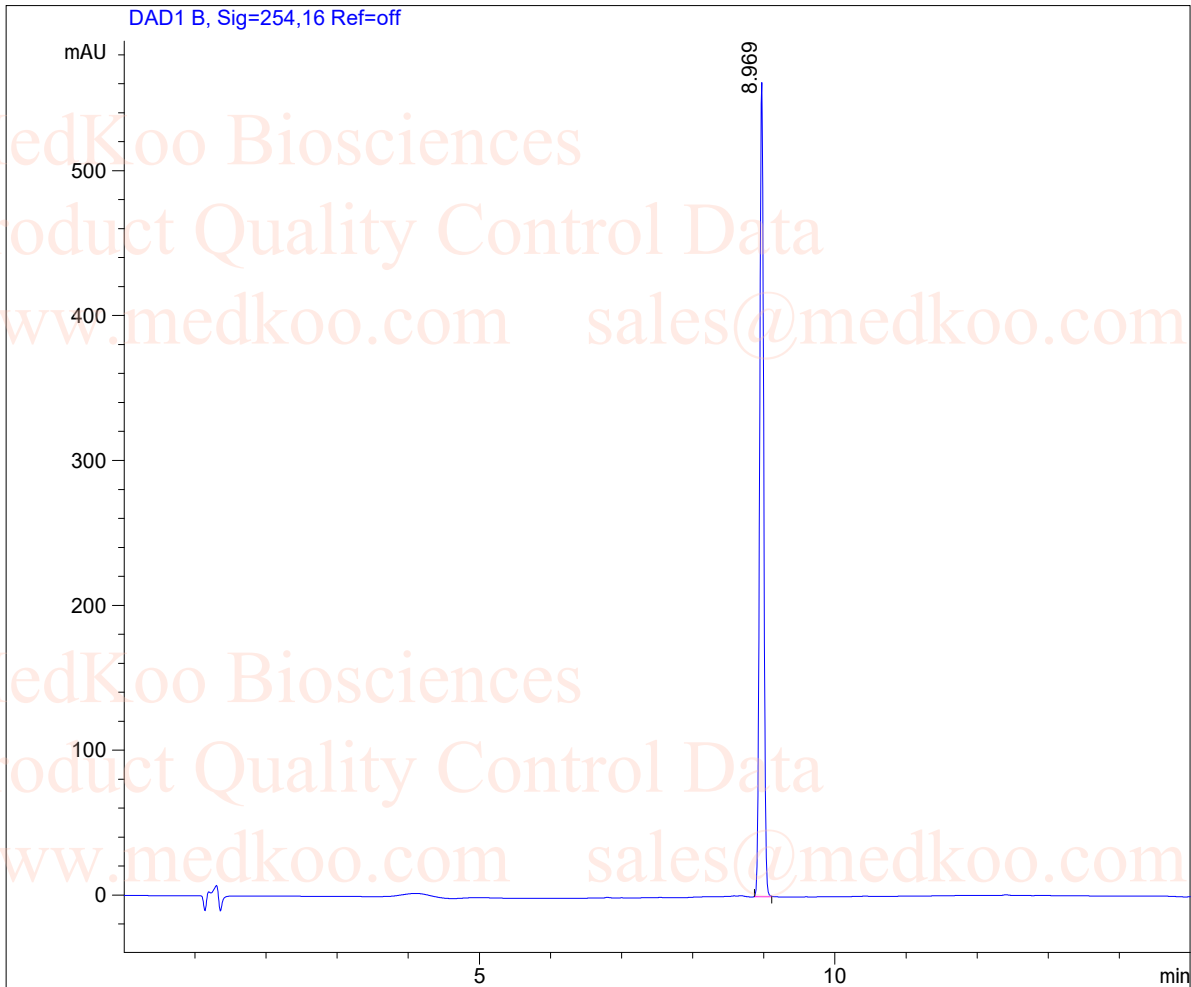


MedKoo Cat#: 406116
 Name: Lificiguat
 CAS#: 170632-47-0
 Lot#: A20T06K11
 Chemical Formula: C₁₉H₁₆N₂O₂
 Exact Mass: 304.12118
 Molecular Weight: 304.34



Lif McGuat HPLC Analysis

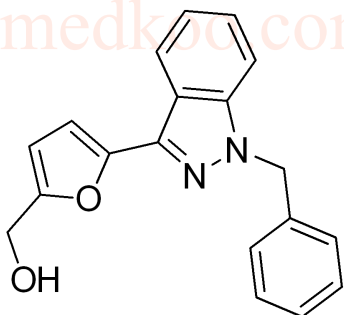
Sample Name : 170632-47-0
Data File : D:\DATA-LCMS-13\170632-47-0.D
Inj. Vol. : 2ul
Acq Operator : LCMS-13 Location : Vial 45
Acq. Method : D:\data-lcms-13\C2-P-20-95-TFA-15MI
Method Info. : column:Eclipse XDB-C18 5um 4.6*150mm ;mobile phase:B(ACN), A(0.05%TFA); gradient(B%):as Acq.Method above



=====
Integration Results
=====

Signal 1: DAD1 B, Sig=254,16 Ref=off

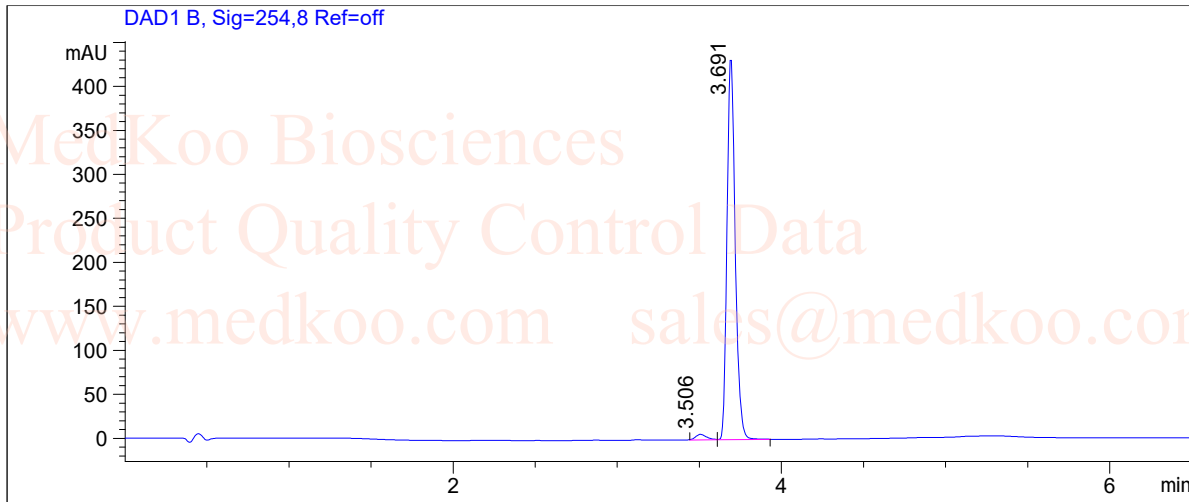
#	R.T.	Type	Height	Height%	Width	Area	Area %
1	8.969	MM	563.603	100.000	0.066	2229.203	100.000



MedKoo Cat#: 406116
Name: Lif McGuat
CAS#: 170632-47-0
Lot#: A20T06K11
Chemical Formula: C₁₉H₁₆N₂O₂
Exact Mass: 304.12118
Molecular Weight: 304.34

Lifიცիգուատ LC/MS Analysis

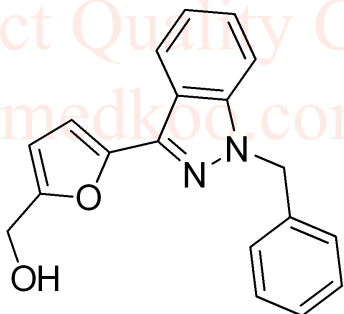
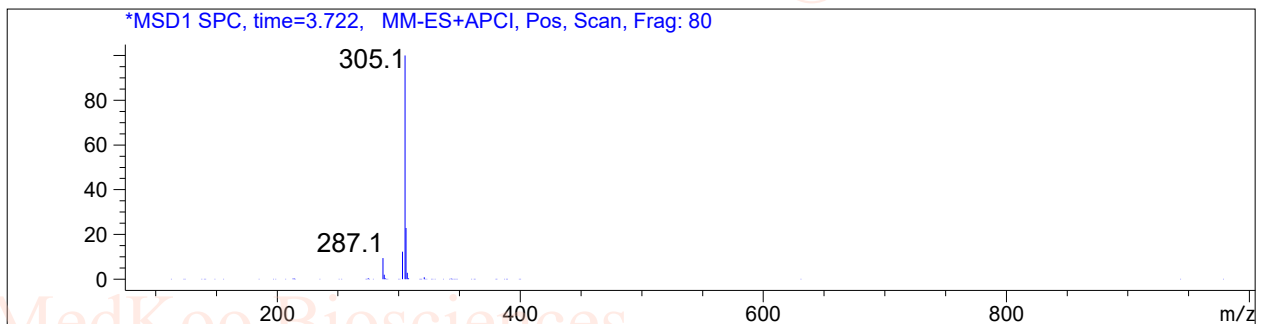
Sample Name : 170632-47-0
Data File : D:\DATA-LCMS-13\170632-47-0.D
Inj. Vol. : 2ul
Acq Operator : LCMS-13 Location : Vial 45
Acq. Method : D:\data-lcms-13\P-05-95-TFA.M
Method Info. : column:Xbridge C18 5um 4.6*50mm ;mobile phase:B(ACN),
A(0.05%TFA); gradient(B%):as Acq.Method above



Integration Results

Signal 1: DAD1 B, Sig=254,8 Ref=off

#	R.T.	Type	Height	Height%	Width	Area	Area %
1	3.506	MF	6.244	1.409	0.078	29.130	1.890
2	3.691	FM	436.788	98.591	0.058	1512.511	98.110



MedKoo Cat#: 406116
Name: Lifიცիգուատ
CAS#: 170632-47-0
Lot#: A20T06K11
Chemical Formula: C₁₉H₁₆N₂O₂
Exact Mass: 304.12118
Molecular Weight: 304.34