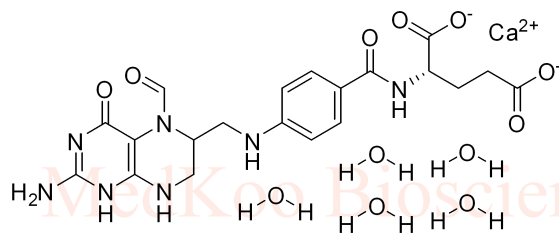
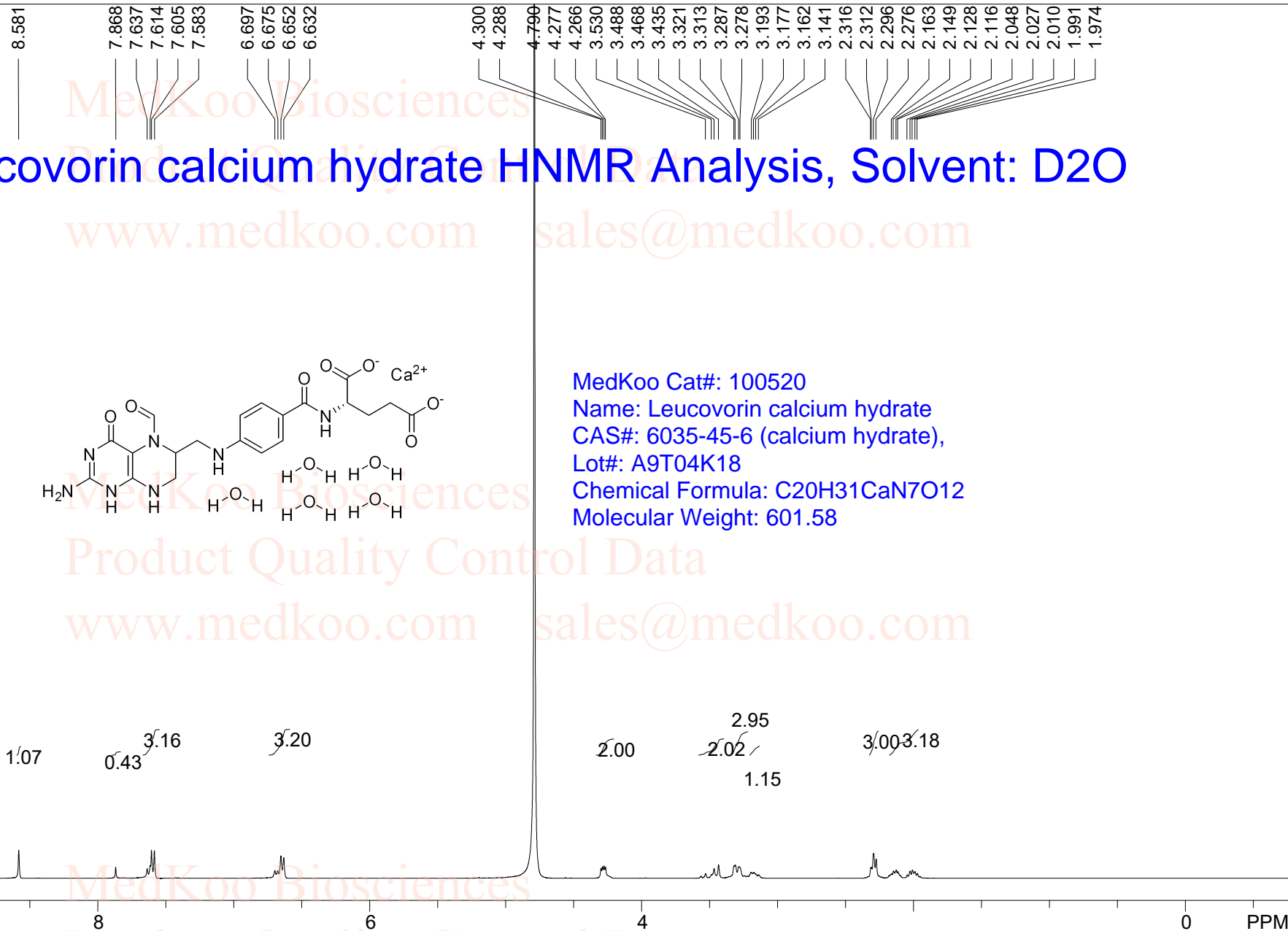


Leucovorin calcium hydrate HNMR Analysis, Solvent: D2O



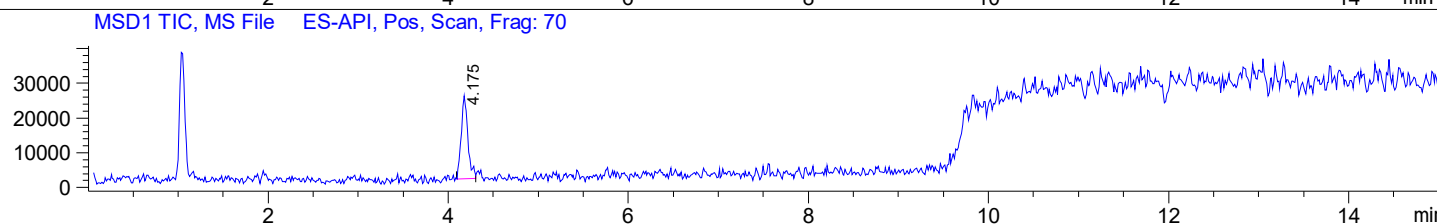
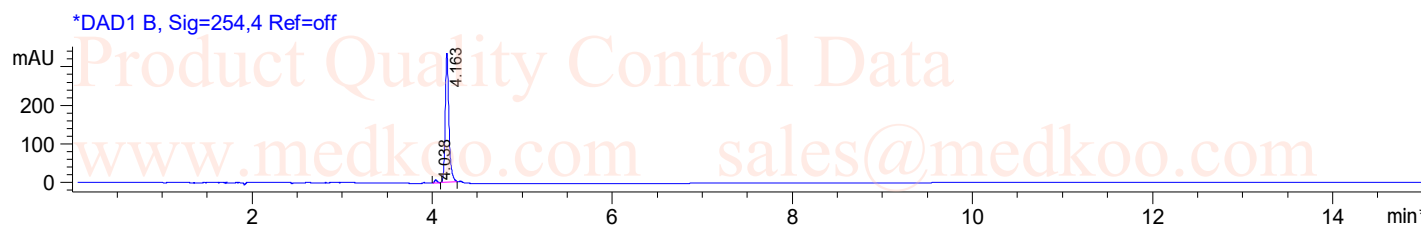
MedKoo Cat#: 100520
 Name: Leucovorin calcium hydrate
 CAS#: 6035-45-6 (calcium hydrate),
 Lot#: A9T04K18
 Chemical Formula: C₂₀H₃₁CaN₇O₁₂
 Molecular Weight: 601.58



D2O,							
F1: 400.132	F2: 1.000	SW1: 8224		OF1: 2506.2		PTS1d: 65536	
EX: zg30		PW: 15.0 usec	PD: 1.0 sec	NA: 8	LB: 0.0		Nuts - \$pdata

Leucovorin calcium hydrate LC/MS Analysis

Sample Name : 6035-45-6
Acq. Method : D:\METHODS\2-POS-15MIN.M
Analysis Method : D:\METHODS\2-POS-15MIN.M
Sample Info : Easy-Access Method: '2-POS-15MIN'
Method Info : Mobile Phase : A:water(0.01%TFA) B:ACN(0.01%TFA)
 Gradient:5%B increase to 95%B within 7.5min,95%B for 7.5min.
 Flow Rate :1.0ml/min
 Column :Sunfire, 150*4.6mm,3.5um
 Column Temperature:45C

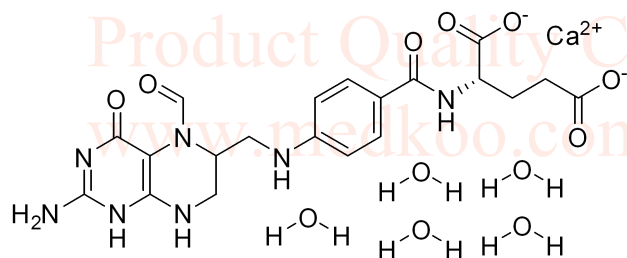
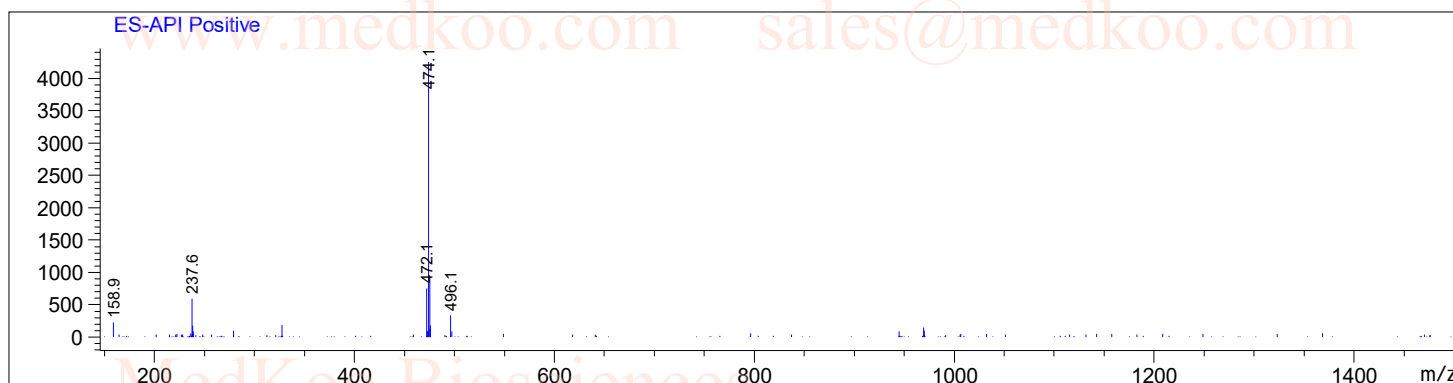


Integration Results for DAD1 B, Sig=254,4 Ref=off

RetTim	Width	Area	Height	Area%
4.04	0.03	15.39	7.58	1.58
4.16	0.04	960.47	335.95	98.42

Ret. Time: 4.18

<<<< POSITIVE SPECTRA >>>>



MedKoo Cat#: 100520
 Name: Leucovorin calcium hydrate
 CAS#: 6035-45-6 (calcium hydrate),
 Lot#: A9T04K18
 Chemical Formula: C₂₀H₃₁CaN₇O₁₂
 Molecular Weight: 601.58