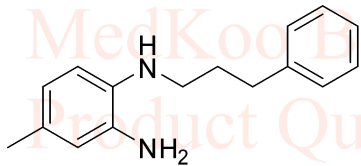


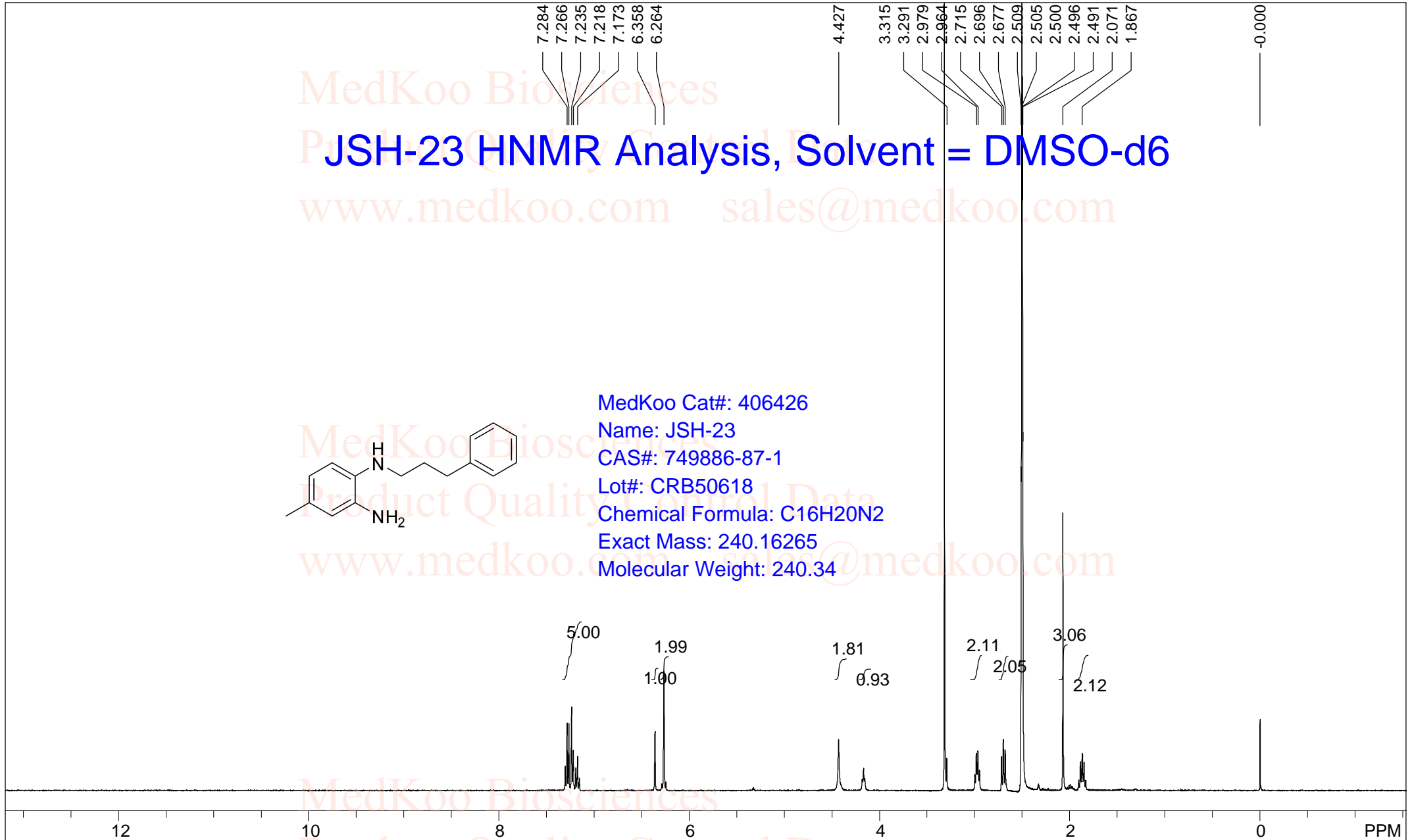
MedKoo Biosciences

JSH-23 HNMR Analysis, Solvent = DMSO-d6

www.medkoo.com sales@medkoo.com



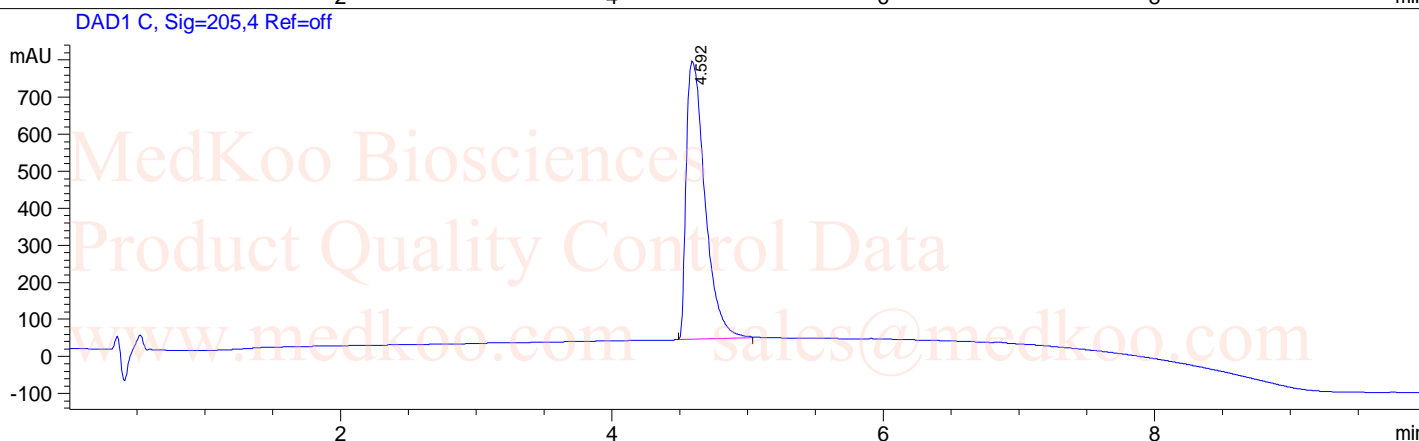
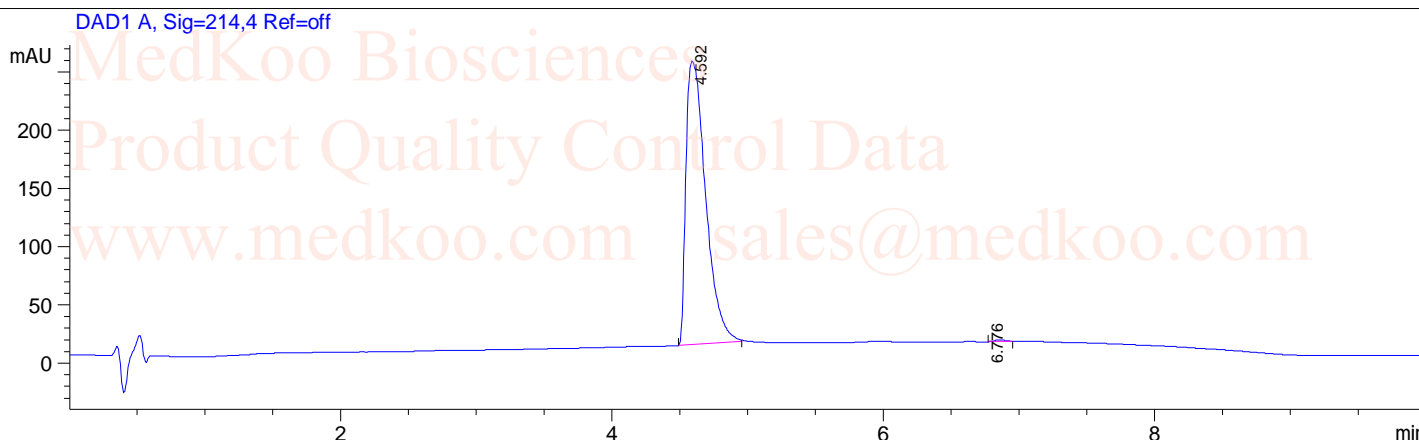
MedKoo Cat#: 406426
Name: JSH-23
CAS#: 749886-87-1
Lot#: CRB50618
Chemical Formula: C16H20N2
Exact Mass: 240.16265
Molecular Weight: 240.34



spect, DMSO,							
F1: 400.132	F2: 1.000	SW1: 8013		OF1: 2468.0		PTS1d: 65536	
EX: zg30		PW: 14.8 usec	PD: 1.0 sec	NA: 16	LB: 0.0		Nuts - \$pdata

JSH-23 HPLC Analysis

Sample Name : 616-CC
Acq. Operator : 9
Spec. Reported : Integration
Tgt Mass(EZX) : Location :
P1-A-08
Inj : 0
Inj Volume : 5.8 ul

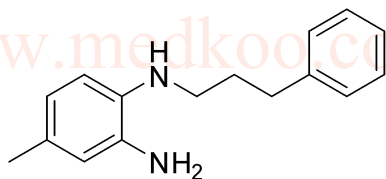


Integration Results for DAD1 A, Sig=214,4 Ref=off

RetTim	Width	Area	Height	Area%
4.59	0.16	2456.47	243.38	99.72
6.78	0.08	6.90	0.03	0.28

Integration Results for DAD1 C, Sig=205,4 Ref=off

RetTim	Width	Area	Height	Area%
4.59	0.15	7205.20	750.50	100.00



MedKoo Cat#: 406426

Name: JSH-23

CAS#: 749886-87-1

Lot#: CRB50618

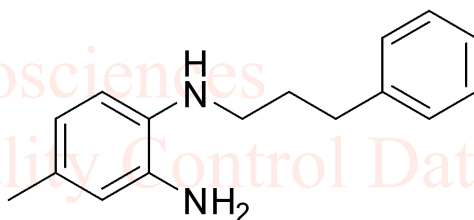
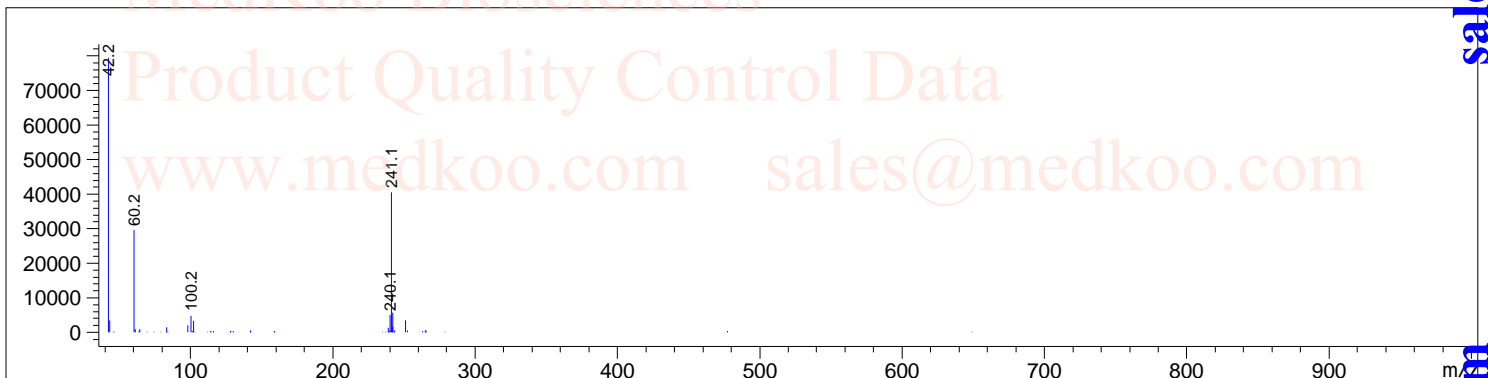
Chemical Formula: C₁₆H₂₀N₂

Exact Mass: 240.16265

Molecular Weight: 240.34

JSH-23 MS Analysis

Sample Name : 1
Acq. Operator : 8



MedKoo Cat#: 406426
Name: JSH-23
CAS#: 749886-87-1
Lot#: CRB50618
Chemical Formula: C₁₆H₂₀N₂
Exact Mass: 240.16265
Molecular Weight: 240.34

MedKoo Biosciences
Product Quality Control Data
www.medkoo.com sales@medkoo.com