

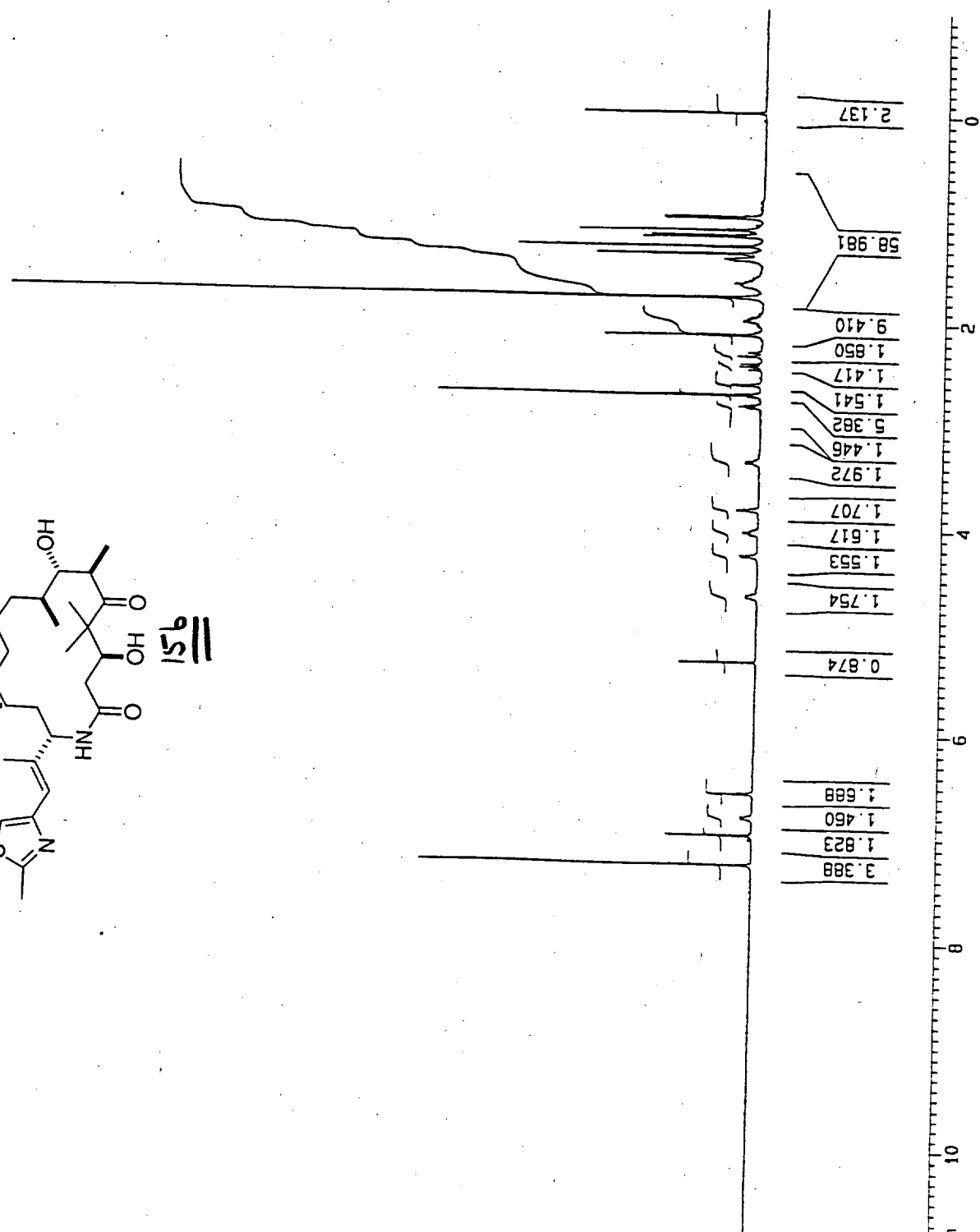
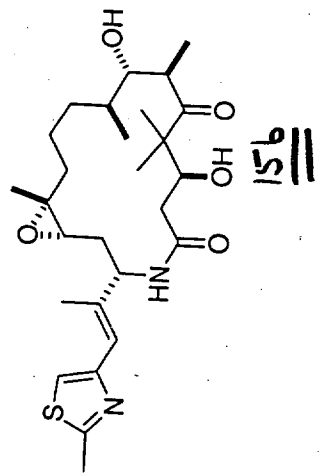
52

Current Data Parameters
 NAME 431491actamb
 EXPNO 10
 PROCNO 1

F2 - Acquisition Parameters
 Date_ 980731
 Time 15.58
 INSTRUM airx400
 PROBHD 5 mm QNP 1H
 PULPROG zg30
 TD 32768
 SOLVENT CDC13
 NS 16
 DS 2
 SMH 8333.333 Hz
 FIDRES 0.254313 Hz
 AQ 1.9661300 sec
 RG 2860
 DM 60.000 usec
 DE 85.71 usec
 TE 300.0 K
 D1 2.00000000 sec
 P1 9.00 usec
 SF01 400.1324710 MHz
 NUCLEUS 1H

F2 - Processing parameters
 SI 16384
 SF 400.1300072 MHz
 WDW EM
 SSB 0
 LB 0.30 Hz
 GB 0
 PC 1.50

1D NMR plot parameters
 CX 20.00 cm
 FIP 11.000 ppm
 F1 4401.43 Hz
 F2P -1.000 ppm
 F2 -400.13 Hz
 PPHCM 0.60000 ppm/cm
 HZCM 240.07800 Hz/cm



Current Data Parameters
 NAME bb4166317934
 EXPNO 12
 PROCNO 1

F2 - Acquisition Parameters
 Date_ 971027
 Time 12.58
 INSTRUM arx400
 PROBD 5 mm QNP 1H
 PULPROG zgpg30
 TD 32768
 SOLVENT CDCl3
 NS 256
 DS 2
 SWH 33333.332 Hz
 FIDRES 1.017253 Hz
 AQ 0.4915700 sec
 RG 32768
 DM 15.000 usec
 DE 21.43 usec
 TE 300.0 K
 D12 0.00002000 sec
 DL6 21.00 dB
 D1 2.00000000 sec
 CPOPRG waltz16
 P31 100.00 usec
 D11 0.03000000 sec
 DL5 21.00 dB
 P1 8.00 usec
 SF01 100.6254358 MHz
 NUCLEUS 13C

F2 - Processing parameters
 SI 32768
 SF 100.6127290 MHz
 NDM EM
 SSB 0
 LB 2.00 Hz
 GB 0
 PC 1.40

1D NMR plot parameters
 CX 20.00 cm
 F1P 240.000 ppm
 F1 24147.05 Hz
 F2P 0.000 ppm
 F2 0.00 Hz
 PPMCM 12.00000 ppm/cm
 HZCM 1207.35278 Hz/cm

